

# Neon Tees

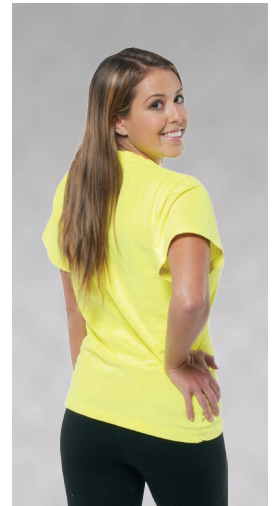
A Panda Apparel Group Company





## OUR MISSION

At Panda Apparel, we believe in making our mark in the imprintable apparel marketplace. We strive hard to provide high quality garments, while developing unique colors and styles that set us apart from the others. Our NeonTees label is dedicated to using true neon pigments on garment dyed tees to provide bright, exciting and fun products. Subdued earthtones are used in the pigment dyed ZeroGravitee line. All of our products feature fine combed cotton that is ring spun to provide a soft hand right out of the box. Our fabrics emerge softer with each wash, achieving the status as the most comfortable shirt in the wardrobe. The Panda Apparel corporate culture is to operate in socially responsible environment where we communicate freely with customers and employees. As we continue to grow and evolve, we are proud to maintain the core values honed from our humble beginnings.



Scott & Donna Marino  
Founders - Panda Apparel Group







**Style: NTRTAD**  
**Adult Unisex Tank**

**Fabric:** Ultrasoft 6.1 ounce 100% pre-shrunk ringspun 20 singles combed cotton with enzyme wash finish.

**Features:** Side seams, double-needle stitching, bound-on self-trim around neck and armholes. Relaxed fit body style.

**Sizes:** Adult X-Small to XX-Large  
Youth companion available









**Style: NTRSSAD  
Adult Unisex Short Sleeve Tee**

**Fabric:** Ultrasoft 6.1 ounce 100% pre-shrunk ringspun 20 singles combed cotton with enzyme wash finish.

**Features:** Side seams, double-needle stitching, shoulder-to-shoulder tape. Relaxed fit body style.

**Sizes:** Adult Small to XX-Large  
Youth companion available





**Style: NTVNAD  
Adult Unisex Fine  
Jersey V-Neck Tee**

**Fabric:** Ultrasoft 5.0 ounce 100% pre-shrunk ringspun 30 singles combed cotton with enzyme wash finish.

**Features:** Baby rib v-neck, side seams, double-needle stitching, shoulder-to-shoulder tape. Nicely fitted body style.

**Sizes:** Adult Small to XX-Large







**Style: NTRTYT  
Youth Tank Top**

**Fabric:** Ultrasoft 5.4 ounce 100% pre-shrunk ringspun 26 singles combed cotton with enzyme wash finish.

**Features:** Side seams, double-needle stitching, bound-on self-trim around neck and armholes. Relaxed fit body style.

**Sizes:** Youth X-Small (4/5)  
Small (6/8)  
Medium (10/12)  
Large (14/16)  
Adult companion available



**Style: NTRSSYT  
Youth Short Sleeve Tee**

**Fabric:** Ultrasoft 5.4 ounce 100% pre-shrunk ringspun 26 singles combed cotton with enzyme wash finish.

**Features:** Side seams, double-needle stitching, shoulder-to-shoulder tape. Relaxed fit body style.

**Sizes:** Youth Small (6/8)  
Medium (10/12)  
Large (14/16)  
Adult companion available





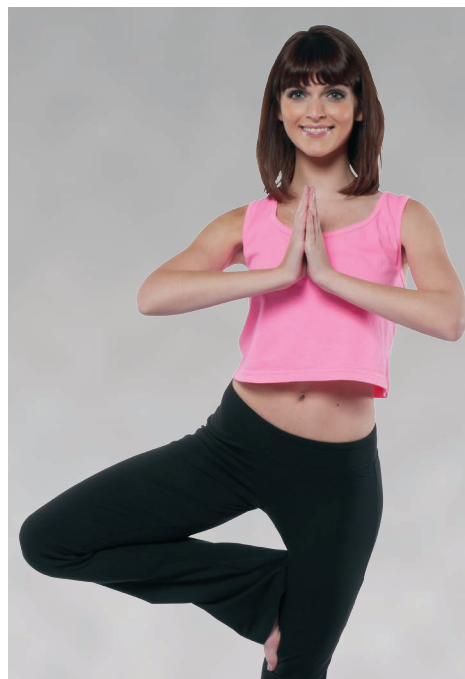


**Style: NTCTWM  
Women's Crop Tank**

**Fabric:** Ultrasoft 5.4 ounce 100% pre-shrunk ringspun 26 singles combed cotton with enzyme wash finish.

**Features:** Side seams, double-needle stitching, shoulder-to-shoulder tape. Relaxed fit body style.

**Sizes:** Women's XS/S, M/L, XL







**Style: NTHDAD**  
**Adult Unisex Pull-over Hoodie**

**Fabric:** 8.7 ounce 80% cotton / 20% polyester with enzyme wash.

**Features:** Side seams, double-needle stitching, 1x1 ribbed cuffs and bottom, front pouch pocket, lined hood. Relaxed fit body style.

**Sizes:** Adult Small to XX-Large



**Style: NTRLSAD**  
**Adult Unisex Long Sleeve Tee**

**Fabric:** Ultrasoft 6.1 ounce 100% pre-shrunk ringspun 20 singles combed cotton with enzyme wash finish.

**Features:** Side seams, double-needle stitching, shoulder-to-shoulder tape, ribbed cuffs. Relaxed fit body style.

**Sizes:** Adult Small to XX-Large





**Style: NTPNWM**  
**Women's Reversible Mesh Tank**

**Fabric:** 100% Polyester Sports Mesh.

**Features:** Side seams, double-needle stitching, reversible white inside, open bottom for easier decoration. Fitted body style.

**Sizes:** Women's X-Small to Large



**Style: NT-TRUCK**  
**Snap Back Truckers Mesh Hat**

**Features:** 5-Panel design, 3.75" crown, polyester foam front, mesh back, snap closure.

**Sizes:** Adjustable snap back, one size fits many adults





**Style: NTKADTD**  
**Neon Swirl Adult Unisex Tank**

**Fabric:** 6.1 ounce 100% pre-shrunk jersey knit cotton.

**Cool Breeze** - Green, Blue, Yellow Swirl

**Summer Sunset** - Pink, Orange, Yellow Swirl

**Features:** Tubular body, double-needle stitching, bound-on self-trim around neck and armholes. Relaxed fit body style. Hand tied and dyed with traditional dyes.

**Sizes:** Adult X-Small to X-Large



**Style: NTSSADTD**  
**Neon Swirl Adult Unisex Tee**

**Fabric:** 5.6 ounce 100% pre-shrunk jersey knit cotton.

**Cool Breeze** - Green, Blue, Yellow Swirl

**Summer Sunset** - Pink, Orange, Yellow Swirl

**Features:** Tubular body, double-needle stitching, shoulder-to-shoulder tape. Relaxed fit body style. Hand tied and dyed with traditional dyes.

**Sizes:** Adult Small to XX-Large



## Ordering:

Shop our styles and brands 24 hours a day:

[www.NeonTees.com](http://www.NeonTees.com)

[www.ZeroGravitee.com](http://www.ZeroGravitee.com)

**Toll Free: 800-832-9591**  
**Standard Phone: 908-497-9900**  
**Fax Order Line: 908-325-1668**

## Customer Service:

Customer Service is available Monday-Friday to help answer any questions or concerns you may have.

Please e-mail [sales@neontees.com](mailto:sales@neontees.com) or [sales@zerogravitee.com](mailto:sales@zerogravitee.com).

You may also call us at 800-832-9591 or 908-497-9900.

## Things you should know about our SHIRTS:

- **What is pigment dye?** Pigment dye is a process where the dye is applied to a finished garment. With garment dye, subtle variations from dye lot to dye lot are to be expected. When selling these shirts to groups, it is important to let them know about these properties.
- **Wash and Care Instructions:** We do recommend washing separately in cold water. With the pigment dye process, pigment loss will occur during the first washings and is a desired property of these shirts.
- **Can I screen print them?** Yes, they can be screen printed. Some special care may be needed as the pigments in the dye are heat sensitive. See website for more detailed instructions or call our tech team.
- **Can you print them for me?** Yes, we can print them for you. We have low contract rates and quick turnarounds. We can also blind ship direct to your customer. Contact us for a quote.

## Things you should know about US:

- **Where do you ship from?** We ship from our Springfield, NJ warehouse. At this time, all products are available direct from us.
- **Can you drop ship?** Yes, we can blind drop ship. You can provide a packing list or we can generate a generic one.
- **How can I pay?** Credit Cards, Net Terms, PayPal, COD Cashiers Check, COD Check.
- **Retail Sales?** Wholesale pricing is available only to qualified businesses. Proof of business is required.

## Return Policy:

- Please inspect your merchandise before printing. We cannot accept returns on decorated or washed garments under any circumstances.
- Returns will be subject to a restocking fee based on the quantity and nature of the products. There is a minimum restocking fee of \$15.00.
- All claims for shortages, damages, etc. must be made within 72 hours of receipt of merchandise.

## Contract Dye/Private Label:

Need a different item, color or label? We can dye to order. Contact us for details. Custom colors and private label programs start at 200 dozen.

**ASI: 73583 PPAI: 468488 SAGE: 69313 UPIC:NEONTEES**

Zero Gravitee and Neon Tees are not responsible for typographical errors, manufacturer label changes, or color variations from actual product in this catalog or online. Garment dyes vary in shade due to the dying process. Cold water washing prior to first use is recommended. We offer no specific warranty of merchantability or fitness of these garments for any particular purpose.