

# Alexander



## 2014

**TOOLWORKS    DESKWORKS    SPAWORKS**

Useful tools for everyday life...

[www.alexandermc.com](http://www.alexandermc.com)

# 2014 Guide to Useful Tools

TOOLWORKS		DESKWORKS		SPAWORKS	
Pocket Screwdrivers	pg 4-14	Stylus Pens	pg 37	Emery Boards	pg 50-54
Screwdrivers	pg 14-18	Logo Dome Pens	pg 38-39	Salon Boards	pg 55-56
Multi-Tools	pg 19	Logo Projection	pg 40	Pedicure	pg 57
Flashlights	pg 20-25	Metal Pens	pg 41	Clippers	pg 58-59
Magnetic Pickup Tools	pg 26-27	Plastic Pens	pg 42	Manicure	pg 59
Auto Accessories	pg 28-29	Eco Writing	pg 42	Mirrors	pg 60-61
Cutters	pg 30-31	Organization	pg 43	Sanitizers	pg 62
Tire Gauges	pg 32-33	Magnifiers	pg 44-46	Misc. Spa	pg 63
Tape Measures	pg 34-35	Tech Accessories	pg 46	<b>OTHERWORKS</b>	
Level	Pg 35	Organization Packs	pg 47		
Scissors	pg 36	Writing Packs	pg 48-49		
				General Information	pg 64-65
				Custom Works	pg 66
				Marketing Tools	pg 67

## Featured Cover Product:

### 2948 POP UP LANTERN

Similar to our best selling #2056 Light Puck but does alot more. Flip to page 23 for product details.

*Twist top for pop-up lantern*

*Closed single bright LED Flashlight*



*Magnetic back and flip out hook allows for hands-free operation.*

## ICON LEGEND



**Made or Assembled in the USA**  
Products fully made or assembled in our facility in the US



**Magnetic**  
Products enhanced with magnets to improve functionality



**Full Color Decoration**  
Full color process digital printing available for one low set-up charge



**Alexander Exclusives**  
Products developed by and available only from Alexander



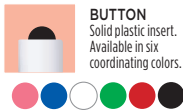
**Eco-Friendly**  
Products made from recycled components



**New**  
Featuring products new for 2014

# BUILDING YOUR OWN SCREWDRIVER IS EASY

## BUTTON TOP



**BUTTON**  
Solid plastic insert.  
Available in six coordinating colors.



## BASIC TOPS



**MAGNET**  
Powerful pickup tool retrieves lost metal parts from tight spaces – perfect for auto repair, machine shops and hobbyists.



**VALVE STEM**  
Tightens and removes valve stem inserts on tires – great for automotive industry.



**#0 PHILLIPS**  
Fits most small Phillips head screws – great for toys, small appliances and electronics.

## SPECIALITY TOPS



**MICRO BLADE**  
Ultrafine slotted head – great for medical, photographic and electronic equipment. Size 2 mm.



**#10 STAR**  
For small star-head screws and bolts – provides additional contact points to reduce slippage.



**#15 STAR**  
For average-size star-head screws and bolts – provides additional contact points to reduce slippage.



**HEX NUT DRIVER**  
3/16" head.



**JEWELER'S/EYEGLASS**  
Fine, slotted head – sized especially for eyeglass repair.



**CUTTER**  
Cuts most twist ties, ribbons & zip ties.



**AWL/HOLE PUNCH**  
Great for punching holes in paper, leather, vinyl and other materials.



**DIP SWITCH**  
Nonconductive head



**1/4" SLOTTED**  
Standard size tip works with most slotted screws.



**#1 PHILLIPS**  
Smaller tip works with small Phillips screws.



**#2 PHILLIPS**  
Standard size tip works with most Phillips screws.



**ROTATING TOP DOME**  
Provides additional leverage by increasing torque. Available only on Big Jake™ handles.



**ROTATING TOP LOGO DOME**  
Provides additional leverage and branding power. Available only on Big Jake™ handles.



**7/32" SLOTTED**  
Precision tip works with most slotted screws.



**STRAIGHT HEX**  
3/16" Allen wrench style head.



**HEX KEY**  
Allen wrench style head with 90° bend. Available in four standard sizes: 1/16", 5/64", 3/32" and 3/16".



**BOTTLE OPENER**  
Easily opens bottles. Smooth edges.



**LID LIFTER**  
Great for painters and home improvement industry. Available only on Big Jake™ and Super Tri-Ad™ handles.

## MICRO™



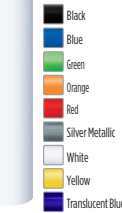
Micro handle design. High impact, solid plastic handle. Available in white only. Handle dimensions with clip measures 2.69"L x 0.30"W



## POCKET PARTNER™



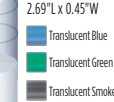
Classic handle design. High impact, solid plastic handle. Handle dimensions with clip measures 2.69"L x 0.40"W



## LEVEL RITE™



Mini-level in handle for on-the-fly adjustments. High impact, solid plastic handle. Handle dimensions with clip measures 2.69"L x 0.45"W



## BIG JAKE™



Classic handle design. 25 percent larger than the original Pocket Partner™. High impact, solid plastic handle. Handle dimensions with clip measures 3.00"L x 0.50"W



## TRI-AD™



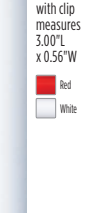
Unique triangular shape accommodates three imprints and won't roll away on hard surfaces. High impact, solid plastic handle. Handle dimensions with clip measures 3.00"L x 0.45"W



## SUPER TRI-AD™



25 percent larger than the original Tri-Ad™. High impact, solid plastic handle. Handle dimensions with clip measures 3.00"L x 0.56"W



TOP OPTIONS

HANDLE OPTIONS

## BASIC BLADES



**REGULAR**  
.131" wide head.



**PHILLIPS**  
Size 0 head. Great for toys, small appliances and electronics.



**SLIM**  
.100" wide head. A smaller slotted blade great for hobby and repair work. Available on 2035 white handle only.



**JEWELER'S/EYEGLASS**  
Fine, slotted head – sized especially for eyeglass repair.



**TECHNICIAN**  
2.4 mm (3/32") wide head. Great for precision work on computers and electronics, eyeglasses and delicate equipment.



**AWL/HOLE PUNCH**  
Great for punching holes in paper, leather, vinyl and other materials.



**MICRO BLADE REGULAR**  
Ultrafine slotted head, size 3 mm. Great for medical and electronic equipment. Blade extends 1.19" from handle.



**ELECTRICIAN**  
.125" wide head. Special straight-line, slim blade great for recessed areas in fuse panels and small appliances.

## REVERSIBLE BLADE

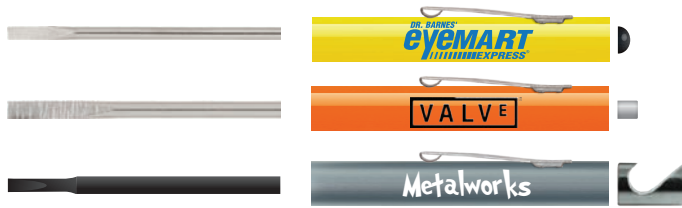
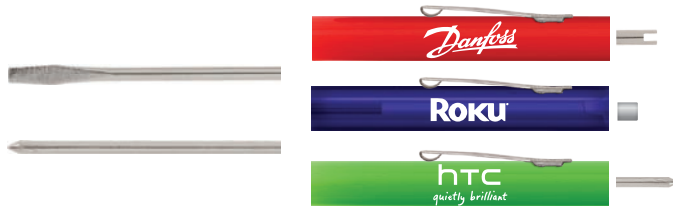
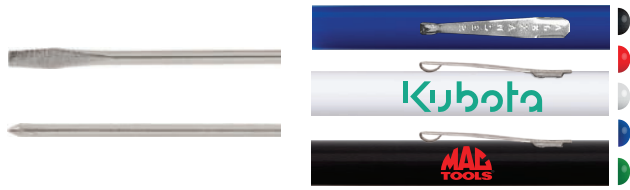


**REVERSIBLE**  
Easy-to-change 2-in-1 blade (slotted size 0.13", Phillips head size 0).

BLADE OPTIONS

Mix and match top, handle and blade options for a near custom tool

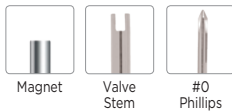
# POCKET PARTNER™ FIXED BLADE



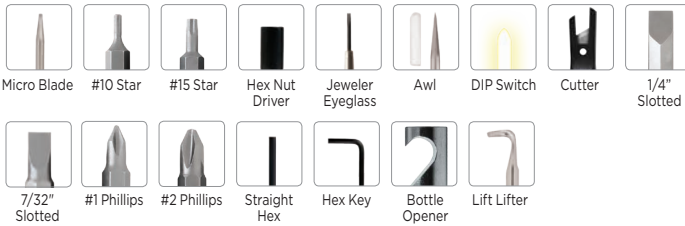
## Button Tops



## Standard Tool Tops



## Specialty Tops



## Basic Blades



Regular Blade

Phillips Blade

## Specialty Blades

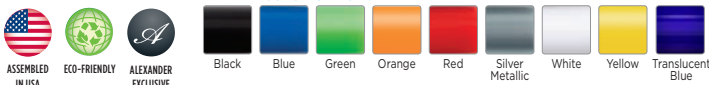


Slim Blade

Electrician Blade

Technician Blade

## HANDLE COLOR OPTIONS



## 2025 POCKET PARTNER™ FIXED BLADE

- 20 top options provide additional functions for specialized applications\*

\*Slim blade available with white barrel only

## Button Tops / Basic Blades

Regular or Phillips Blade with Button Top

200	500	1500	2500
\$1.08	\$1.06	\$1.04	\$1.02

## Standard Tops / Basic Blades

Regular or Phillips Blade with a Standard Top

200	500	1500	2500
\$1.62	\$1.60	\$1.58	\$1.56

## Specialty Tops / Any Blades

Basic Blade with a Specialty Top

Specialty Blade with a Button or Standard Top

Specialty Blade with a Specialty Top

200	500	1500	2500
\$3.04	\$3.02	\$3.00	\$2.98

Size	5.50" L x 0.40" W w/ Button Top
Imprint Location	Handle
Imprint Size	2.00" L x 0.94" H
Imprint Location	Above-the-clip imprint +\$0.40(A)
Imprint Size	0.50" L x 0.38" H
Imprint Method	Screen Print
Packaging	Bulk
Shipping Weight	2.5 lbs. per 100 units

## 2032 POCKET PARTNER™ REVERSIBLE BLADE

- Easy-to-change 2-in-1 blade (slotted/Phillips)

### Button Tops / Reversible Blade

#### Reversible Blade with Button Top

200	500	1500	2500	(4A)
\$1.42	\$1.40	\$1.38	\$1.36	

### Standard Tops / Reversible Blade

#### Reversible Blade with a Standard Top

200	500	1500	2500	(4A)
\$2.26	\$2.24	\$2.22	\$2.20	

### Specialty Tops / Reversible Blade

#### Reversible Blade with a Specialty Top

200	500	1500	2500	(4A)
\$3.22	\$3.20	\$3.18	\$3.16	

Size	5.25" L x 0.40" W w/ Button Top
Imprint Location	Handle
Imprint Size	2.00" L x 0.94" H
Imprint Location	Above-the-clip imprint +\$0.40(A)
Imprint Size	0.50" L x 0.38" H
Imprint Method	Screen Print
Packaging	Bulk
Shipping Weight	2.5 lbs. per 100 units

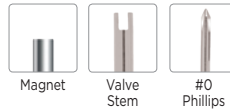
# POCKET PARTNER™ REVERSIBLE BLADE



#### Button Tops



#### Standard Tool Tops



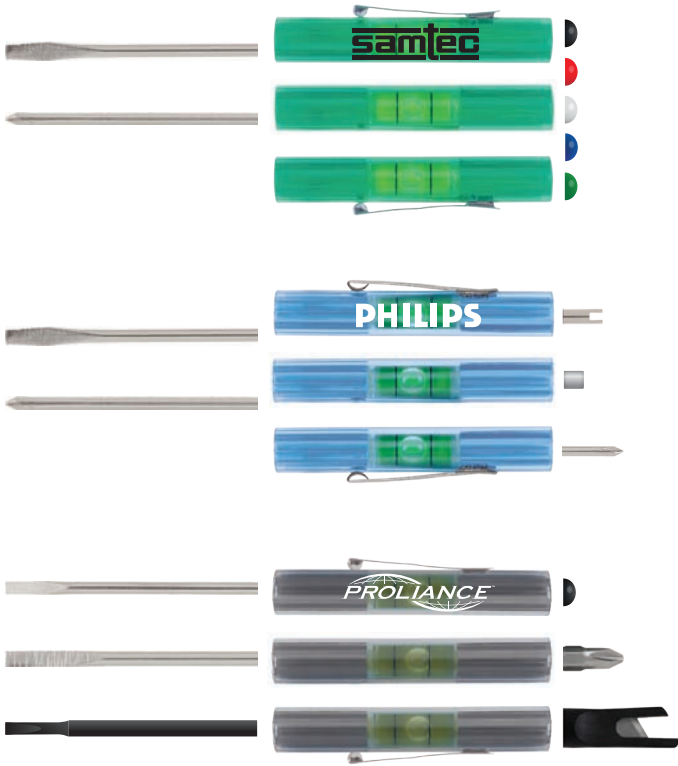
#### Specialty Tops



#### HANDLE COLOR OPTIONS



# LEVEL RITE™ FIXED BLADE



## 2048 LEVEL RITE™ FIXED BLADE

- 20 top options provide additional functions for specialized applications

### Button Tops / Basic Blades

Regular or Phillips Blade with Button Top

200	500	1500	2500
\$2.20	\$2.18	\$2.16	\$2.14

(4A)

### Standard Tops / Basic Blades

Regular or Phillips Blade with a Standard Top

200	500	1500	2500
\$2.92	\$2.90	\$2.88	\$2.86

(4A)

### Specialty Tops / Any Blades

Basic Blade with a Specialty Top

Specialty Blade with a Button or Standard Top

Specialty Blade with a Specialty Top

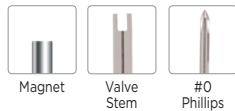
200	500	1500	2500
\$4.16	\$4.14	\$4.12	\$4.10

(4A)

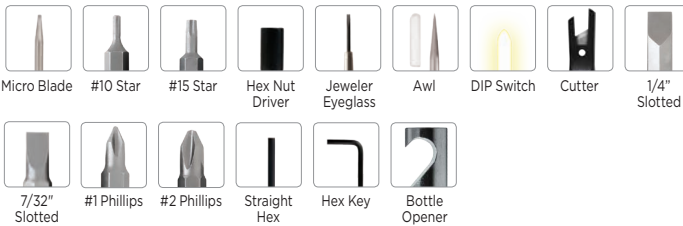
#### Button Tops



#### Standard Tool Tops



#### Specialty Tops



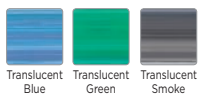
#### Basic Blades



#### Specialty Blades



#### HANDLE COLOR OPTIONS



Size 5.50"L x 0.45"W w/ Button Top  
 Imprint Location Handle  
 Imprint Size 2.00"L x 0.94"H  
 Imprint Location Above-the-clip imprint +\$0.40(A)  
 Imprint Size 0.50"L x 0.38"H  
 Imprint Method Screen Print  
 Packaging Bulk  
 Shipping Weight 2.5 lbs. per 100 units

## 2049 LEVEL RITE™ REVERSIBLE BLADE

• Easy-to-change 2-in-1 blade (slotted/Phillips)

### Button Tops / Reversible Blade

#### Reversible Blade with Button Top

200	500	1500	2500	(4A)
\$2.72	\$2.70	\$2.68	\$2.66	

### Standard Tops / Reversible Blade

#### Reversible Blade with a Standard Top

200	500	1500	2500	(4A)
\$3.44	\$3.42	\$3.40	\$3.38	

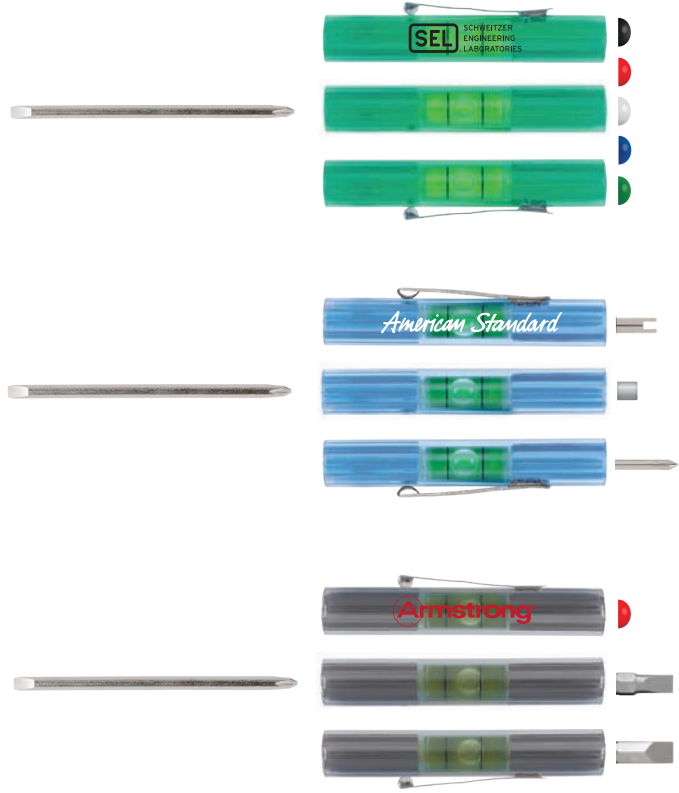
### Specialty Tops / Reversible Blade

#### Reversible Blade with a Specialty Top

200	500	1500	2500	(4A)
\$4.08	\$4.06	\$4.04	\$4.02	

Size	5.25"L x 0.45"W w/ Button Top
Imprint Location	Handle
Imprint Size	2.00"L x 0.94"H
Imprint Location	Above-the-clip imprint +\$0.40(A)
Imprint Size	0.50"L x 0.38"H
Imprint Method	Screen Print
Packaging	Bulk
Shipping Weight	2.5 lbs. per 100 units

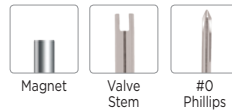
# LEVEL RITE™ REVERSIBLE BLADE



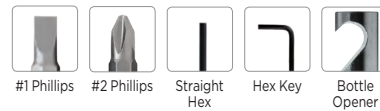
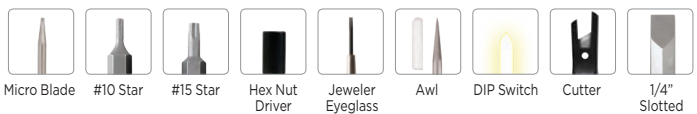
### Button Tops



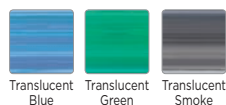
### Standard Tool Tops



### Specialty Tops



### HANDLE COLOR OPTIONS



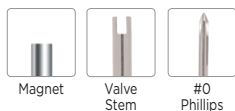
# BIG JAKE™ FIXED BLADE



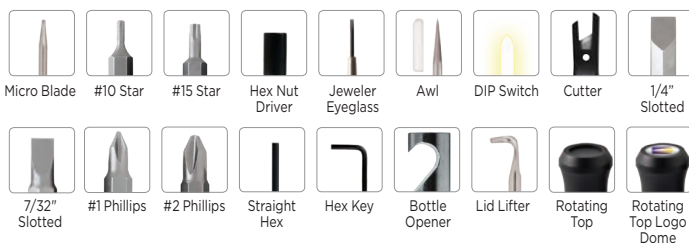
## Button Tops



## Standard Tool Tops



## Specialty Tops



## Basic Blades



## Specialty Blades



## HANDLE COLOR OPTIONS



## 2055 BIG JAKE™ FIXED BLADE

• 25% larger than the original

### Button Tops / Basic Blades

Regular or Phillips Blade with Button Top

200	500	1500	2500	(4A)
\$1.32	\$1.30	\$1.28	\$1.26	

### Standard Tops / Basic Blades

Regular or Phillips Blade with a Standard Top

200	500	1500	2500	(4A)
\$2.04	\$2.02	\$2.00	\$1.98	

### Specialty Tops / Any Blades

Basic Blade with a Specialty Top

Specialty Blade with a Button or Standard Top

Specialty Blade with a Specialty Top

200	500	1500	2500	(4A)
\$3.30	\$3.28	\$3.26	\$3.24	

Size 5.63"L x 0.50"W w/ Button Top  
 Imprint Location Handle  
 Imprint Size 2.00"L x 1.25"H  
 Imprint Location Above-the-clip imprint +\$0.40(A)  
 Imprint Size 0.50"L x 0.38"H  
 Imprint Method Screen Print  
 Packaging Bulk  
 Shipping Weight 3.5 lbs. per 100 units



## 2052 BIG JAKE™ REVERSIBLE BLADE

• Easy-to-change 2-in-1 blade (slotted/Phillips)

### Button Tops / Reversible Blade

Reversible Blade with Button Top

200	500	1500	2500
\$1.98	\$1.96	\$1.94	\$1.92

(4A)

### Standard Tops / Reversible Blade

Reversible Blade with a Standard Top

200	500	1500	2500
\$2.70	\$2.68	\$2.66	\$2.64

(4A)

### Specialty Tops / Reversible Blade

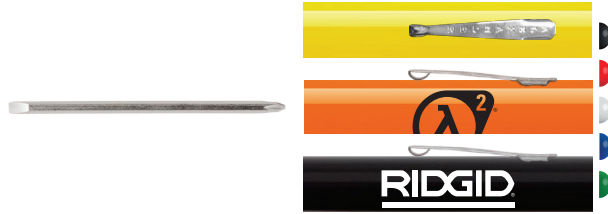
Reversible Blade with a Specialty Top

200	500	1500	2500
\$3.34	\$3.32	\$3.30	\$3.28

(4A)

Size 5.38"L x 0.50"W w/ Button Top  
 Imprint Location Handle  
 Imprint Size 2.00"L x 1.25"H  
 Imprint Location Above-the-clip imprint +\$0.40(A)  
 Imprint Size 0.50"L x 0.38"H  
 Imprint Method Screen Print  
 Packaging Bulk  
 Shipping Weight 3.5 lbs. per 100 units

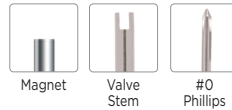
# BIG JAKE™ REVERSIBLE BLADE



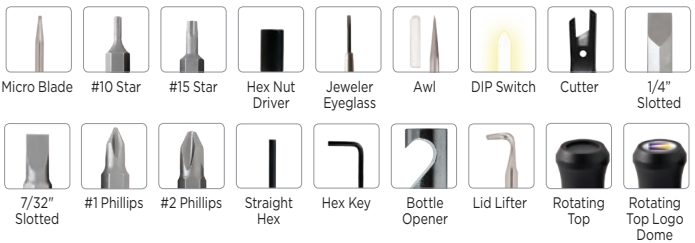
#### Button Tops



#### Standard Tool Tops



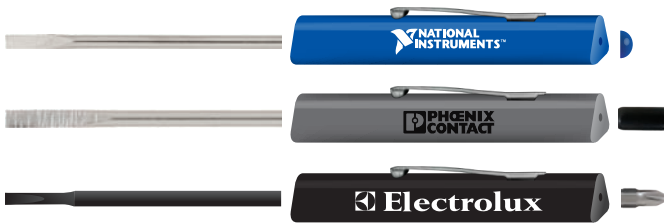
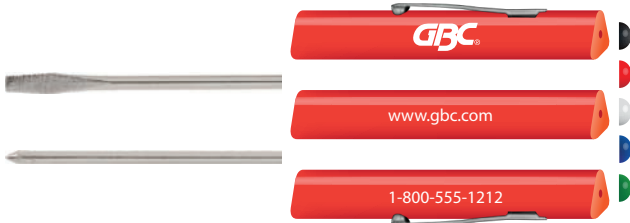
#### Specialty Tops



#### HANDLE COLOR OPTIONS



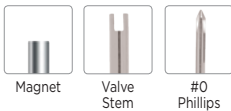
# TRI-AD™ FIXED BLADE



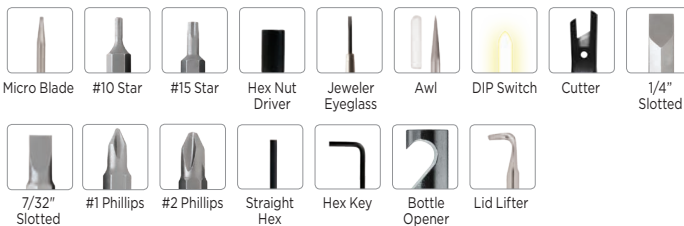
### Button Tops



### Standard Tool Tops



### Specialty Tops



### Basic Blades



### Specialty Blades



### HANDLE COLOR OPTIONS



## 2065 TRI-AD™ FIXED BLADE

- Three sides of imprint for one set up

### Button Tops / Basic Blades

Regular or Phillips Blade with Button Top

200	500	1500	2500
\$1.54	\$1.52	\$1.50	\$1.48 <sup>(4A)</sup>

### Standard Tops / Basic Blades

Regular or Phillips Blade with a Standard Top

200	500	1500	2500
\$2.26	\$2.24	\$2.22	\$2.20 <sup>(4A)</sup>

### Specialty Tops / Any Blades

Basic Blade with a Specialty Top

Specialty Blade with a Button or Standard Top

Specialty Blade with a Specialty Top

200	500	1500	2500
\$3.48	\$3.46	\$3.44	\$3.42 <sup>(4A)</sup>

Size	5.63" L x 0.45" W w/ Button Top
Imprint Location	Handle
Imprint Size	2.00" L x 0.25" H
Imprint Method	Screen Print
Packaging	Bulk
Shipping Weight	3.0 lbs. per 100 units

## 2062 TRI-AD™ REVERSIBLE BLADE

• Easy-to-change 2-in-1 blade (slotted/Phillips)

### Button Tops / Reversible Blade

#### Reversible Blade with Button Top

200	500	1500	2500	(4A)
\$2.16	\$2.14	\$2.12	\$2.10	

### Standard Tops / Reversible Blade

#### Reversible Blade with a Standard Top

200	500	1500	2500	(4A)
\$2.88	\$2.86	\$2.84	\$2.82	

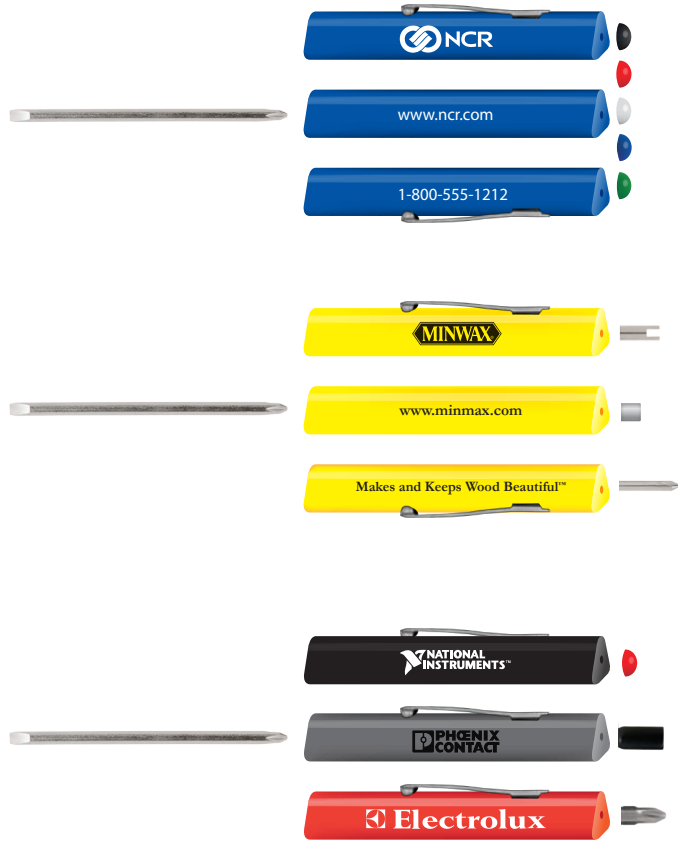
### Specialty Tops / Reversible Blade

#### Reversible Blade with a Specialty Top

200	500	1500	2500	(4A)
\$3.52	\$3.50	\$3.48	\$3.46	

Size 5.38"L x 0.45"W w/ Button Top  
 Imprint Location Handle  
 Imprint Size 2.00"L x 0.25"H  
 Imprint Method Screen Print  
 Packaging Bulk  
 Shipping Weight 3.5 lbs. per 100 units

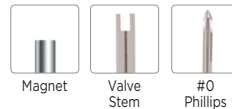
# TRI-AD™ REVERSIBLE BLADE



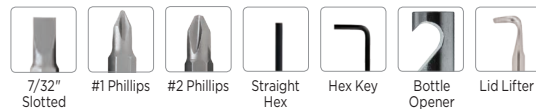
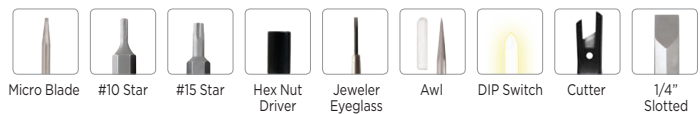
### Button Tops



### Standard Tool Tops



### Specialty Tops



### HANDLE COLOR OPTIONS



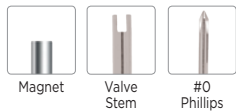
# SUPER TRI-AD™ FIXED BLADE



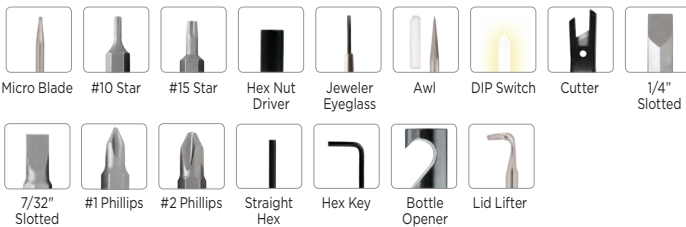
## Button Tops



## Standard Tool Tops



## Specialty Tops



## Basic Blades



## Specialty Blades



## HANDLE COLOR OPTIONS



## 2066 SUPER TRI-AD™ FIXED BLADE

- 25% larger than the original Tri-ad

### Button Tops / Basic Blades

Regular or Phillips Blade with Button Top

200	500	1500	2500	(4A)
\$2.30	\$2.28	\$2.26	\$2.24	

### Standard Tops / Basic Blades

Regular or Phillips Blade with a Standard Top

200	500	1500	2500	(4A)
\$3.02	\$3.00	\$2.98	\$2.96	

### Specialty Tops / Any Blades

Basic Blade with a Specialty Top

Specialty Blade with a Button or Standard Top

Specialty Blade with a Specialty Top

200	500	1500	2500	(4A)
\$3.86	\$3.84	\$3.82	\$3.80	

Size	5.63"L x 0.56"W w/ Button Top
Imprint Location	Handle
Imprint Size	2.00"L x 0.25"H
Imprint Method	Screen Print
Packaging	Bulk
Shipping Weight	4.5 lbs. per 100 units

## 2067 SUPER TRI-AD™ REVERSIBLE BLADE

• Easy-to-change 2-in-1 blade (slotted/Phillips)

### Button Tops / Reversible Blade

Reversible Blade with Button Top

200	500	1500	2500
\$3.02	\$3.00	\$2.98	\$2.96

(4A)

### Standard Tops / Reversible Blade

Reversible Blade with a Standard Top

200	500	1500	2500
\$3.74	\$3.72	\$3.70	\$3.68

(4A)

### Specialty Tops / Reversible Blade

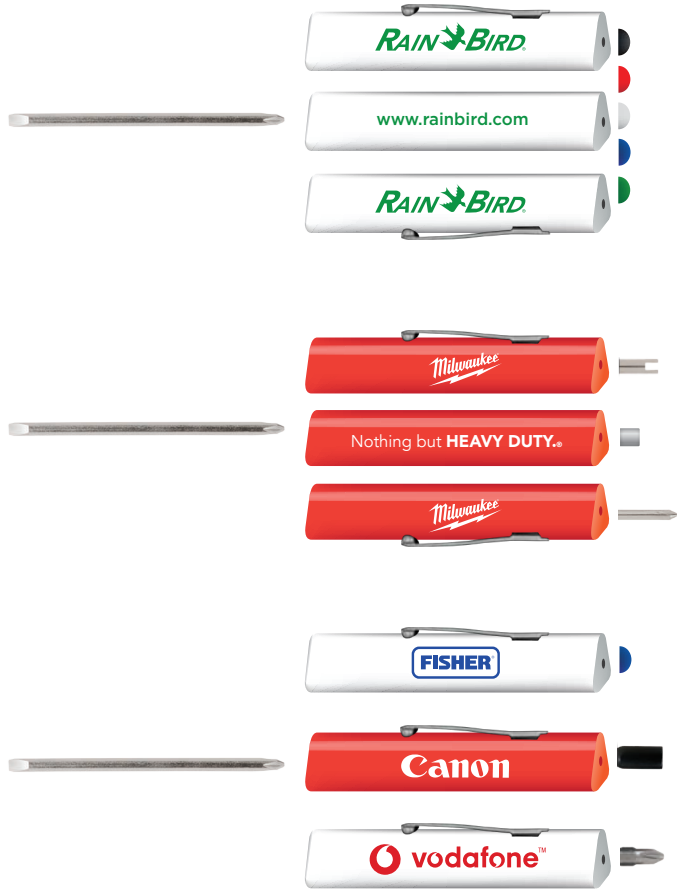
Reversible Blade with a Specialty Top

200	500	1500	2500
\$4.38	\$4.36	\$4.34	\$4.32

(4A)

Size 5.38"L x 0.45"W w/ Button Top  
 Imprint Location Handle  
 Imprint Size 2.00"L x 0.25"H  
 Imprint Method Screen Print  
 Packaging Bulk  
 Shipping Weight 3.5 lbs. per 100 units

# SUPER TRI-AD™ REVERSIBLE BLADE



### Button Tops



### Standard Tool Tops



Magnet

Valve Stem

#0 Phillips

### Specialty Tops



Micro Blade

#10 Star

#15 Star

Hex Nut Driver

Jeweler Eyeglass

Awl

DIP Switch

Cutter

1/4" Slotted



7/32" Slotted



#1 Phillips



#2 Phillips



Straight Hex



Hex Key



Bottle Opener



Lid Lifter

### HANDLE COLOR OPTIONS



Red

White



# MICRO TOOLS™ FIXED BLADE



### Button Top



### Standard Tool Tops



Magnet



Valve Stem



#0 Phillips

### Specialty Tops



Micro Blade



Jeweler Eyeglass



Awl

### Basic Blades



Regular Blade



Phillips Blade

### Specialty Blades



Electrician Blade



Technician Blade



ASSEMBLED  
IN USA



ALEXANDER  
EXCLUSIVE

### HANDLE COLOR



## 2040 MICRO TOOLS™

- Eight top options
- Perfect for hard to reach areas
- Micro handle

### Button Tops / Basic Blades

#### Regular or Phillips Blade with Button Top

200	500	1500	2500
\$1.34	\$1.32	\$1.30	\$1.28

### Standard Tops / Basic Blades

#### Regular or Phillips Blade with a Standard Top

200	500	1500	2500
\$2.02	\$2.00	\$1.98	\$1.96

### Specialty Tops / Any Blades

#### Basic Blade with a Specialty Top

#### Specialty Blade with a Button or Standard Top

#### Specialty Blade with a Specialty Top

200	500	1500	2500
\$3.54	\$3.52	\$3.50	\$3.48

Size	4.13"L x 0.30"W w/ Button Top
Imprint Location	Handle
Imprint Size	1.50"L x 0.75"H
Imprint Location	Above-the-clip imprint +\$0.40(A)
Imprint Size	0.50"L x 0.38"H
Imprint Method	Screen Print
Packaging	Bulk
Shipping Weight	2.0 lbs. per 100 units

## 2041 MICRO TOOL™ SET

Compact design - fits easily in your pocket

- Awl/hole punch, micro blade regular, micro Phillips and electrician blade

Size	4.75"L x 1.75"W x 0.50"D
Imprint Location	Handle
Imprint Size	1.75"L x 0.63"H
Imprint Location	Above-the-clip imprint +\$0.40(A)
Imprint Method	Screen Print
Packaging	Bulk
Shipping Weight	6.0 lbs. per 100 units

100	250	500	1000
\$5.10	\$5.00	\$4.90	\$4.80



## 2042 TRIMMER/ALIGNMENT TOOL™

Perfect for TVs, computers and thermostats

- Insulated slotted blades for close-tolerance work

Size	5.00"L x 0.30"W
Imprint Location	Handle
Imprint Size	1.50"L x 0.75"H
Imprint Location	Above-the-clip imprint +\$0.40(A)
Imprint Size	0.50"L x 0.38"H
Imprint Method	Screen Print
Packaging	Bulk
Shipping Weight	2.0 lbs. per 100 units

100	250	500	1000
\$3.52	\$3.30	\$3.12	\$3.06



ASSEMBLED  
IN USA



ALEXANDER  
EXCLUSIVE

### 2054 SUPER TRI-AD™ 4-IN-1 SCREWDRIVER

- Includes three bits: one slotted, two Phillips
- Shaft doubles as a .3125" hex driver
- Bits store in handle when not in use
- Three imprints for one setup

Size	5.13"L x 0.69"W		
Imprint Location	Handle includes three sides of imprint		
Imprint Size	2.00"L x 0.25"H		
Imprint Method	Screen Print		
Packaging	Poly Bag		
Shipping Weight	10.5 lbs. per 100 units		

100	250	500	1000	(4A)
\$5.48	\$5.28	\$5.08	\$4.88	



Phillips #1, Phillips #2, and 7/32" Flat

HANDLE COLOR OPTIONS



### 2443 LEVEL DRIVER

- Easy-to-read bubble level
- Handy pocket clip
- Driver bits\* store securely in handle
- Anodized aluminum body

\*Includes one slotted and one Phillips

Size	5.25"L x 0.50"W		
Imprint Location	Barrel		
Imprint Size	1.75"L x 0.25"H		
Imprint Method	Laser Engrave		
Packaging	Poly Bag		
Shipping Weight	7.0 lbs. per 100 units		

100	250	500	1000	(4A)
\$4.44	\$4.38	\$4.32	\$4.26	



Blue



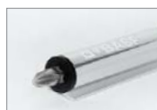
Silver



Red

Front screwdriver

Storage of bits



Phillips # 2 and Flat 1/4

### 2044 6-IN-1 SCREWDRIVER™

- Includes two dual-ended bits and two 0.25" and 0.31" hex drivers
- Reversible shaft doubles as hex driver

Size	7.00"L x 1.00"W		
Imprint Location	Handle		
Imprint Size	2.00"L x 0.63"H		
Imprint Method	Screen Print		
Packaging	Poly Bag		
Shipping Weight	29.0 lbs. per 100 units		

100	250	500	1000	(4A)
\$5.52	\$5.44	\$5.36	\$5.28	



Phillips # 1, Phillips #2, Flat 3/16 and Flat 1/4

HANDLE COLOR OPTIONS



**NEW**



Bright LED flashlight



### 2116 LIGHTED AUTO CHANGING MULTI-BIT SCREWDRIVER

- Tool contains 6 different bits (three slotted and three Phillips)
- Easy to grip handle
- LED light in opposite end
- Magnetic bits remove easily

Size	8.00"L x 1.35"W		
Imprint Location	Handle		
Imprint Size	2.30"L x 0.64"H		
Imprint Method	Label		
Packaging	Box		
Packaging Size	8.25"L x 1.50"W x 1.50"D		
Shipping Weight	48.0 lbs. per 100 units		

	50	100	150	250	(4A)
	\$13.50	\$13.40	\$13.30	\$13.20	



Red

Blue



Phillips # 1, Phillips #2, Phillips #3, Flat 1/8, Flat 3/16 and Flat 1/4

### 2510 SABERTOOTH T-DRIVER™

Swivel design for maximum leverage

- 9-in-1 tool: six screwdrivers plus three 0.25" hex drivers
- Three dual-ended bits: three slotted and three Phillips tips

Size	5.25"L x 0.63"W		
Imprint Location	Handle		
Imprint Size	1.50"L x 0.30"H		
Imprint Method	Pad Print		
Packaging	Poly Bag		
Shipping Weight	7.0 lbs. per 100 units		

	100	250	500	1000	(4A)
	\$13.28	\$13.20	\$13.12	\$13.04	



ALEXANDER EXCLUSIVE



Blue

Red

Black

Phillips # 0, Phillips #2, Flat 3, Flat 5, Hex 2 and Hex 3

### 2589 PALM TOOL KIT

- Includes six bits: two slotted, two Phillips and two hex
  - 3-ft metal measuring tape
  - Mini LED flashlight with On/Off switch\*
  - Three translucent body color options
- \*Batteries included

Size	3.63"L x 2.63"W x 0.88"D		
Imprint Location	Front		
Imprint Size	1.00"L x 0.75"H		
Imprint Method	Screen Print		
Packaging	Poly Bag		
Shipping Weight	14.8 lbs. per 100 units		

	100	250	500	1000	(4A)
	\$5.44	\$5.38	\$5.32	\$5.26	



### 2200 POCKET PARTNER™ KEY TAG

- Build your own key tag with variety of colors and tool tops
- See page 3 for key tag top options

Size	4.88" L X 1.13" W		
Imprint Location	Barrel		
Imprint Size	2.00" L X 0.94" W		
Imprint Method	Screen Print		
Packaging	Poly Bag		
Shipping Weight	5.0 lbs. per 100 units		

100	250	500	1000	(4A)
<b>\$3.60</b>	<b>\$3.50</b>	<b>\$3.40</b>	<b>\$3.30</b>	



### 2072 REVERSIBLE POCKET PARTNER™ KEY TAG

- Reversible blade that stores inside the barrel

Size	4.88" L X 1.13" W		
Imprint Location	Barrel		
Imprint Size	2.00" L X 0.94" W		
Imprint Method	Screen Print		
Packaging	Poly Bag		
Shipping Weight	5.0 lbs. per 100 units		

100	250	500	1000	(4A)
<b>\$4.00</b>	<b>\$3.90</b>	<b>\$3.80</b>	<b>\$3.70</b>	



### 2104 MINI SCREWDRIVER PACK

- Colored handles for quick and easy identification
- Includes five screwdrivers: two Phillips and three slotted

Screwdriver Size	4.13" L x 0.31" Dia.		
Imprint Location	Pouch Front		
Imprint Size	1.75" L x 3.00" H		
Imprint Method	Screen Print		
Packaging	Bulk		
Packaging Size	5.25" L x 2.50" W x 0.38" H		
Shipping Weight	6.5 lbs. per 100 units		

100	250	500	1000	(4A)
<b>\$3.08</b>	<b>\$3.00</b>	<b>\$2.92</b>	<b>\$2.84</b>	



### 2107 MINI SCREWDRIVER SET

- Includes five screwdrivers: three Phillips and two slotted
- Plastic case

Size	4.50" L x 2.38" W x 0.75" D		
Imprint Location	Case Front		
Imprint Size	2.00" L x 1.75" H		
Imprint Method	Pad Print		
Packaging	Poly Bag		
Shipping Weight	15.0 lbs. per 100 units		

100	250	500	1000	(4A)
<b>\$4.56</b>	<b>\$4.28</b>	<b>\$4.20</b>	<b>\$4.08</b>	





Phillips #00, Phillips #0, Flat 3.0mm and Flat 1.6mm

### 2905 4-IN-1 PEN-STYLE SCREWDRIVER

- Includes two sizes of dual-ended bits (slotted/Phillips)

Size	5.25"L x 0.63"W
Imprint Location	Barrel
Imprint Size	1.75"L x 0.69"H
Imprint Method	Screen Print
Packaging	Poly Bag
Shipping Weight	1.5 lbs. per 100 units

200	500	1000	2500	(4A)
<b>\$1.76</b>	<b>\$1.68</b>	<b>\$1.60</b>	<b>\$1.52</b>	



Phillips # 00, Phillips #0, Flat 1/8 and Flat 1/16

### 2906 4-IN-1 PEN-STYLE SCREWDRIVER WITH LIGHT

- Handy pen design conceals two slotted and two Phillips screwdrivers
- Batteries included
- LED bulb

Size	5.38"L x 1.30"W
Imprint Location	Barrel
Imprint Size	1.25"L x 0.25"H
Imprint Method	Screen Print
Packaging	Poly Bag
Shipping Weight	2.6 lbs. per 100 units

50	100	150	250	(4A)
<b>\$6.10</b>	<b>\$5.82</b>	<b>\$5.70</b>	<b>\$5.50</b>	

Twist on LED Light



Phillips #00, Phillips #0, Phillips # 1, Phillips #2, Phillips #3, Slotted 1.5mm, Slotted 2.0mm, Slotted 3.0mm, and Slotted 3.5mm

### 2263 PRECISION MULTI TOOL WITH LIGHT

- All metal construction
- LED bulb
- 8 bits store in barrel: 4 slotted & 4 Phillips
- Batteries included

Size	4.40"L x 0.55"W
Imprint Location	Handle
Imprint Size	2.00"L x 0.18"H
Imprint Method	Laser Engrave
Packaging	Poly Bag
Shipping Weight	9.5 lbs. per 100 units

50	100	150	250	(4A)
<b>\$7.08</b>	<b>\$7.00</b>	<b>\$6.92</b>	<b>\$6.84</b>	

Click on LED Light



### 2264 MULTI-TOOL CARABINER

- Includes a knife and LED light
- Multi-functional tool
- Batteries included

Size	3.53"L x 1.50"W		
Imprint Location	Barrel		
Imprint Size	1.75"W x 0.70"H		
Imprint Method	Laser Engrave		
Packaging	Poly Bag		
Shipping Weight	5.5 lbs. per 100 unit		

100	250	500	1000	(4A)
\$3.60	\$3.52	\$3.44	\$3.36	



Gunmetal

Twist on LED flashlight



### 2262 UTILITY POCKET TOOL

- Tools include: knife, file, saw, scissors, can and bottle opener, corkscrew and two screwdriver tips
- Fold-away key ring loop

Size	3.63"L x 1.25"W x 0.50"D			
Imprint Location	Front			
Imprint Size	1.00"L x 0.55"H			
Imprint Method	Laser Engrave			
Packaging	Poly Bag			
Shipping Weight	20.0 lbs. per 100 units			

50	100	150	250	(4A)
\$8.74	\$8.34	\$8.04	\$7.54	



Blue



Red

### 2261 PLIER MULTI-TOOL

- Tools include: bottle opener, can opener, fish disgorger, two flat screwdrivers, Phillips screwdriver, file, knife, wire cutter and wood saw
- High-quality, metal construction
- Easy-to-grip handle
- Nylon case
- Folds up and fits easily in pocket

Size	4.00"L x 1.75"W x 0.75"D			
Imprint Location	Handle			
Imprint Size	1.25"L x 0.25"H			
Imprint Method	Pad Print			
Packaging	Poly Bag			
Shipping Weight	48.0 lbs. per 100 units			

50	100	150	250	(4A)
\$13.10	\$12.92	\$12.84	\$12.76	



Silver

Closed



Nylon case





Blue

Red

Black

Silver

### 2455 MINI CARABINER CLIP LIGHT

- Bright light LED bulb
- Anodized aluminum body
- Twist on/off
- Batteries included

Size	3.50"L x 0.75"W	
Imprint Location	Barrel	
Imprint Size	1.25"L x 0.20"H	
Imprint Method	Laser Engrave	
Packaging	Poly Bag	
Shipping Weight	4.5 lbs. per 100 unit	

	200	500	1500	2500
	<b>\$2.26</b>	<b>\$2.24</b>	<b>\$2.22</b>	<b>\$2.20</b> (4A)



Red

Black

Blue

Green

### 2458 MINI CARABINER CLIP LIGHT BOTTLE OPENER

- Bright light LED bulb
- Anodized aluminum body
- Twist on/off
- Batteries included

Size	3.50"L x 0.63"W	
Imprint Location	Barrel	
Imprint Size	1.25"L x 0.20"H	
Imprint Method	Laser Engrave	
Packaging	Poly Bag	
Shipping Weight	4.5 lbs. per 100 unit	

	200	500	1500	2500
	<b>\$2.46</b>	<b>\$2.44</b>	<b>\$2.42</b>	<b>\$2.40</b> (4A)

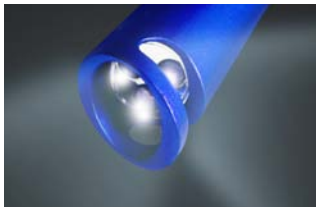


Blue



Black

Bright LED Light



**NEW**

### 2448 LIGHTED BOTTLE OPENER KEY TAG

- 3 LED bulbs
- Bottle opener
- Aluminum body
- Batteries included

Size	4.20"L x 0.80"W	
Imprint Location	Barrel	
Imprint Size	1.75"L x 0.5"H	
Imprint Method	Laser Engrave	
Packaging	Poly Bag	
Shipping Weight	5.5 lbs. per 100 units	

	100	250	500	1000
	<b>\$3.32</b>	<b>\$3.28</b>	<b>\$3.24</b>	<b>\$3.20</b> (4A)

### 2927 MAGNETIC POCKET LIGHT

- LED bulb
- Magnetic clip
- On/Off push button
- Batteries included

Size	5.48"L x .48" W		
Imprint Location	Barrel		
Imprint Size	3.80"L x 0.25"H		
Imprint Method	Laser Engrave		
Packaging	Poly Bag		
Shipping Weight	4.5 lbs. per 100 units		

100	250	500	1000	(4A)
<b>\$3.86</b>	<b>\$3.84</b>	<b>\$3.82</b>	<b>\$3.80</b>	

**NEW**



Black



Blue



MAGNETIC

### 2902 KEY LIGHT

- LED bulb
- Push button switch
- Batteries included

Size	1.63"L x 1.13" W x 0.50"D		
Imprint Location	Back		
Imprint Size	0.81"L x 0.75"H		
Imprint Method	Screen Print		
Packaging	Poly Bag		
Shipping Weight	1.5 lbs. per 100 units		

200	500	1500	2500	(4A)
<b>\$1.88</b>	<b>\$1.82</b>	<b>\$1.76</b>	<b>\$1.70</b>	



Black

Push Button for Light



White

### 2919 SOLAR CARABINER CLIP LIGHT

- Attaches easily to belt loops and back packs
- Solar panel on side
- 2 LED bulbs
- Handy spring clip on top
- Silicone matte finish
- On/Off slide switch

Size	4.06"L x 1.58"W		
Imprint Location	Back		
Imprint Size	1.75"L x 0.75"H		
Imprint Method	Screen Print		
Packaging	Poly Bag		
Shipping Weight	6.0 lbs. per 100 units		

100	250	500	1000	(4A)
<b>\$5.60</b>	<b>\$5.50</b>	<b>\$5.40</b>	<b>\$5.30</b>	



Black

Front Light



Solar Panel Side



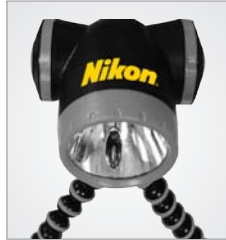
ECO-FRIENDLY



Magnetic feet attaches to metal surfaces



Top imprint



Flexible legs wraps and holds



**NEW**

### 2947 BENDABLE TRI-POD FLASHLIGHT

- Magnetic and bendable legs
- Three function lighting: steady, red steady and red flashing
- Push on/off button
- Batteries included
- LED bulb

Size	9.00"L x 3.00"W			
Imprint Location	Top Center			
Imprint Size	1.00"L x 1.00"H			
Imprint Method	Pad Print			
Packaging	Poly Bag			
Shipping Weight	25.0 lbs. per 100 units			

	50	100	150	250
	<b>\$13.98</b>	<b>\$13.92</b>	<b>\$13.86</b>	<b>\$13.80</b>

(4A)

### 2933 FLEX LIGHT WITH LASER

- Flexible stem neck - directs and keeps light where it's needed
- Magnetic bottom grips metal surfaces
- Bright light LED bulb and laser pointer
- Batteries included
- Metal body

Size	6.50"L x 0.63"W			
Imprint Location	Barrel			
Imprint Size	1.29"L x 0.31"H			
Imprint Method	Laser Engrave			
Packaging	Poly Bag			
Shipping Weight	5.0 lbs. per 100 units			

	100	250	500	1000
	<b>\$4.12</b>	<b>\$4.08</b>	<b>\$4.04</b>	<b>\$4.00</b>

(4A)



Red

Black

Blue

Silver

Sticks to Metal Surfaces



## 2948 POP UP LANTERN

- Three function lighting: high, low and flashing
- Pushes down for easy storage
- Magnet and hook back
- Twist action to pop up lantern
- LED bulb
- Push on/off button
- Batteries included

Size	5.75"L x 1.65"W		
Imprint Location	Top		
Imprint Size	2.25" Dia. minus 1.25" Dia.		
Imprint Method	Screen Print		
Packaging	Poly Bag		
Shipping Weight	29.0 lbs. per 100 units		

50	100	150	250	(4A)
\$9.02	\$8.98	\$8.94	\$8.90	

**NEW**



Open



Bright LED flashlight



## 2056 LIGHT PUCK

- 24 LED bulbs
- Push on/off button
- Mounts to most metal surfaces
- Batteries included

Size	2.75"L x 1.50"W		
Imprint Location	Side		
Imprint Size	1.00"L x 0.50"H		
Imprint Method	Pad Print		
Packaging	Poly Bag		
Shipping Weight	15.0 lbs. per 100 Units		

100	250	500	1000	(4A)
\$5.12	\$5.08	\$5.04	\$5.00	



Red



Blue



Black

Hang It Anywhere



Sticks To Metal Surfaces



**NEW****2926 MINI FLASHLIGHT KEY CHAIN**

- Bright 3 LED bulbs
- Push on/off button
- Batteries included



Silver

Size 2.50" L x 0.81" W  
 Imprint Location Barrel  
 Imprint Size 0.45" L x 0.50" H  
 Imprint Method Laser Engrave  
 Packaging Poly Bag  
 Shipping Weight 10.0 lbs. per 100 Units

100	250	500	1000
\$3.42	\$3.38	\$3.34	\$3.30 <sup>(4A)</sup>



ALEXANDER EXCLUSIVE

**2946 MAGNETIC METAL FLASHLIGHT**

- Bright 9 LED bulbs
- Push on/off button
- Mounts to most metal surfaces
- Batteries included



Gunmetal

Size 3.87" L x 1.15" W  
 Imprint Location Side  
 Imprint Size 1.00" L x 0.67" H  
 Imprint Method Laser Engrave  
 Packaging Poly Bag  
 Shipping Weight 18.0 lbs. per 100 Units

50	100	150	250
\$6.08	\$5.80	\$5.72	\$5.68 <sup>(4A)</sup>

Featuring two magnets in bezel

Sticks to metal surfaces



MAGNETIC

**NEW****2966 MAGNETIC METAL FLASHLIGHT AND KEYCHAIN SET**

- Tin box for gift set
- includes two flashlights: magnetic metal flashlight and mini flashlight key chain
- Flashlights have LED bulbs
- Batteries included



Size 4.70" L x 3.65" W x 1.40" H  
 Imprint Location Top Center and Flashlights  
 Imprint Size Tin Box 2.00" L x 2.00" H  
 Imprint Method Pad Print  
 Packaging Bulk  
 Shipping Weight 34.0 lbs. per 100 Units

50	100	150	250
\$14.70	\$14.60	\$14.50	\$14.40 <sup>(4A)</sup>



ALEXANDER EXCLUSIVE



MAGNETIC



### 2937 UTILITY POCKET LIGHT

- Ultrabright light 3-LED bulbs
- Push on/off button
- Durable aluminum body
- Batteries included

Size	6.88"L x 1.00"W
Imprint Location	Barrel
Imprint Size	4.50"L x 0.38"H
Imprint Method	Laser Engrave
Packaging	Poly Bag
Shipping Weight	19.0 lbs. per 100 units

100	250	500	1000	(4A)
\$4.08	\$4.04	\$4.00	\$3.96	



Blue



Black

Bright LED flashlight



### 2945 DUAL LIGHT STICK

- 9 LED light tip and 16 light flood
- Magnetic bottom with hanger loop
- Metal case
- Batteries included

Size	9.00"L x 1.25"W
Imprint Location	Side
Imprint Size	1.25"L x 0.38"H
Imprint Method	Laser Engrave
Packaging	Poly Bag
Shipping Weight	37.0 lbs. per 100 units

50	100	150	250	(4A)
\$16.30	\$16.20	\$16.10	\$16.00	



Black

Top Light



Bottom





Black



Yellow

### 2082 MAGNETIC PICKUP TOOL

- 25" telescoping shaft
- Retrieves items up to 1 lb
- Handy pocket clip

Size	5.00"L x 0.50"W		
Imprint Location	Handle		
Imprint Size	2.00"L x 1.25"H		
Imprint Method	Screen Print		
Packaging	Poly Bag		
Shipping Weight	6.5 lbs. per 100 units		

50	100	150	250	(4A)
\$6.10	\$5.80	\$5.50	\$5.10	



Red



Blue

### 2071 HEAVY-DUTY MAGNETIC PICKUP TOOL

- All the features of the 2082 plus extra pickup power
- Retrieves items up to 3.5 lbs

Size	5.50"L x 0.50"W		
Imprint Location	Handle		
Imprint Size	2.00"L x 1.25"H		
Imprint Method	Screen Print		
Packaging	Poly Bag		
Shipping Weight	9.0 lbs. per 100 units		

50	100	150	250	(4A)
\$7.06	\$6.86	\$6.66	\$6.46	



Black



White

### 2292 INSPECTION MIRROR/PICKUP TOOL

- 1.50" mirror pivots to any angle - locate hard-to-see items
- 25" telescoping shaft with magnetic tip
- Retrieves items up to 1 lb

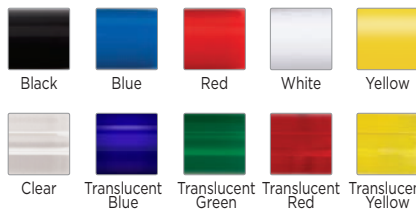
Size	7.38"L x 1.50"W		
Imprint Location	Handle		
Imprint Size	2.00"L x 1.25"H		
Imprint Method	Screen Print		
Packaging	Poly Bag		
Shipping Weight	13.0 lbs. per 100 units		

50	100	150	250	(4A)
\$7.46	\$7.12	\$6.86	\$6.74	

Pickup power



#### HANDLE COLOR OPTIONS for 2082, 2071 and 2292



### 2938 TELESCOPING FLEX FLASHLIGHT

- Metal body with flexible magnetic lighted tip with shaft that extends to 18"
- Retrieves items up to 3 lbs
- 3 LED bulbs
- Batteries included

Size	6.56"L x 0.81"W
Imprint Location	Barrel
Imprint Size	2.00"L x 0.45"H
Imprint Method	Laser Engrave
Packaging	Poly Bag
Packaging Size	7.00"L x 1.25"W x 1.25"H
Shipping Weight	24.0 lbs. per 100 units

50	100	150	250	(4A)
<b>\$10.20</b>	<b>\$10.00</b>	<b>\$9.90</b>	<b>\$9.80</b>	



Magnetic lighted top



Black



### 2080 FLASHLIGHT WITH MAGNETIC PICKUP TOOL

- 6 LED bulbs
- Flexible magnet shaft retrieves items up to 3.5 lbs and rod extends 20"
- Batteries included

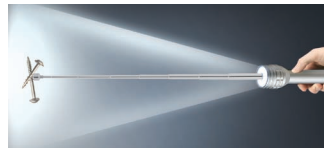
Size	6.88"L x 1.20"W
Imprint Location	Barrel
Imprint Size	3.50"L x 0.38"H
Imprint Method	Laser Engrave
Packaging	Box
Packaging Size	7.00"L x 1.25"W x 1.25"H
Shipping Weight	24.0 lbs. per 100 units

50	100	150	250	(4A)
<b>\$11.30</b>	<b>\$11.20</b>	<b>\$11.10</b>	<b>\$11.00</b>	



Silver

Extended with light on



### 2295 SUPER PICKUP TOOL WITH LIGHT

- LED bulb integrated into magnetic tip
- 32" telescoping shaft
- Retrieves items up to 3 lbs
- 1 LED bulb
- Batteries included

Size	8.25"L x 0.25"W
Imprint Location	Handle
Imprint Size	2.00"L x 0.25"H
Imprint Method	Screen Print
Packaging	Poly Bag
Shipping Weight	13.0 lbs. per 100 units

50	100	150	250	(4A)
<b>\$11.76</b>	<b>\$11.66</b>	<b>\$11.56</b>	<b>\$11.46</b>	



White



Red

Twist for Light Tip



3-Sides for Imprints



**NEW**

### 2804 USB TRAVEL CHARGERS

- USB auto charger
- USB wall plug in charger
- Small zipper case

Size	3.25"L x 2.35"W
Imprint Location	Front Case Only
Imprint Size	1.75"L x 1.25"H
Imprint Method	Pad Print
Packaging	Poly Bag
Shipping Weight	7.0 lbs. per 100 units

100	250	500	1000	(4A)
\$5.62	\$5.58	\$5.54	\$5.50	



Red



White



Blue



Silver

### 2925 MULTI-BEAM AUTO LIGHT

- Fixed and flashing beam feature
- On/Off switch
- Bright light LED bulb with plastic body
- Batteries included

Size	4.63"L x 1.25"W
Imprint Location	Top
Imprint Size	0.75"L x 0.75"H
Imprint Method	Pad Print
Packaging	Box
Packaging Size	4.75"L x 1.25"W x 1.25"D
Shipping Weight	9.5 lbs. per 100 units

100	250	500	1000	(4A)
\$5.30	\$5.20	\$5.10	\$5.00	

Charges in power adapter



### 2803 DOUBLE USB AUTO CHARGER

- 2 USB ports
- Auto charger
- Square head

Size 2.55"L x 1.66"H  
 Imprint Location Center Top  
 Imprint Size 1.10"W x 0.60"H  
 Imprint Method Pad Print  
 Packaging Poly Bag  
 Shipping Weight 4.5 lbs. per 100 units

100	250	500	1000
\$5.72	\$5.68	\$5.64	\$5.60

**NEW**



White

Front view



Side view



### 2801 USB AUTO CHARGER

- Handy auto charger for any smart phone
- Perfect size for travel

Size 2.16"L x 0.93"W  
 Imprint Location Side  
 Imprint Size 0.75"W x 0.40"H  
 Imprint Method Pad Print  
 Packaging Poly Bag  
 Shipping Weight 3.5 lbs. per 100 units

200	500	1500	2500
\$2.64	\$2.56	\$2.48	\$2.40



Black

### 2802 DUAL AUTO CHARGER

- Handy auto charger
- Great for charging multiple items

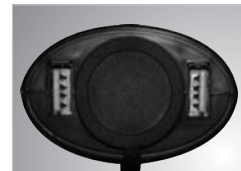
Size 4.00"L x 2.15"W  
 Imprint Location Top  
 Imprint Size 1.25"L x 0.37"H  
 Imprint Method Pad Print  
 Packaging Poly Bag  
 Shipping Weight 5.5 lbs. per 100 units

100	250	500	1000
\$5.56	\$5.48	\$5.40	\$5.36



Black

Dual USB



Flip off cap





FULL-COLOR  
DECORATION



## 2122 BOX CUTTER/ SCRAPER

- Single-edge safety razor blade
- Metal body and cover
- Full-color imprint on white only

Size	4.13"L x 0.88"W x 0.13"D		
Imprint Location	Handle		
Imprint Size	2.50"L x 0.63"H		
Imprint Method	Screen Print, Digital Print		
Packaging	Bulk		
Shipping Weight	6.0 lbs. per 100 units		

One Color Imprint			
200	500	1500	2500
<b>\$1.42</b>	<b>\$1.38</b>	<b>\$1.30</b>	<b>\$1.20</b>

Two or More Color Imprint			
200	500	1500	2500
<b>\$1.88</b>	<b>\$1.84</b>	<b>\$1.80</b>	<b>\$1.76</b>



Black/Blue

## 2001 FLIP-IT SAFETY CUTTER

- Spring-retractable stainless steel blade eliminates injury
- Ergonomic grip
- Stainless steel blade channel
- Fits easily and safely in pocket

Size	5.13"L x 1.13"W x 0.65"D		
Imprint Location	Handle		
Imprint Size	2.75"L x 0.63"H		
Imprint Method	Screen Print		
Packaging	Poly Bag		
Shipping Weight	5.5 lbs. per 100 units		

200	500	1500	2500
<b>\$1.82</b>	<b>\$1.76</b>	<b>\$1.72</b>	<b>\$1.68</b>

Quickly Change  
Blade Orientation



Left Handed Blade Position



Right Handed Blade Position



Black/Yellow



ALEXANDER  
EXCLUSIVE



Blade extended



Silver/Black

## 2008 BOX SAFETY CUTTER

- Auto-retracting utility blade
- Replacable blade
- Single edge razor blade

Size	4.00"L x 1.13"W x 0.38"D		
Imprint Location	Handle		
Imprint Size	1.89"L x 0.75"H		
Imprint Method	Screen Print		
Packaging	Poly Bag		
Shipping Weight	4.5 lbs. per 100 units		

200	500	1500	2500
<b>\$2.24</b>	<b>\$1.98</b>	<b>\$1.84</b>	<b>\$1.74</b>

### 2020 SMALL SNAP BLADE CUTTER

- Removable slotted top safely breaks blades
- Plastic body
- Handy pocket clip

Size 5.00"L x 0.75"W x 0.56"D  
 Imprint Location Handle  
 Imprint Size 2.00"L x 0.31"H  
 Imprint Method Screen Print  
 Packaging Poly Bag  
 Shipping Weight 3.0 lbs. per 100 units

200	500	1500	2500
\$1.08	\$1.04	\$1.00	\$0.96

(4A)



Grey/White



Snap-Off Tool



Opposite side

Black/Orange

### 2021 LARGE SNAP BLADE CUTTER

- Removable slotted top safely breaks blades
- Plastic body

Size 6.38"L x 1.38"W x 0.50"D  
 Imprint Location Handle  
 Imprint Size 2.00"L x 0.44"H  
 Imprint Method Screen Print  
 Packaging Poly Bag  
 Shipping Weight 9.0 lbs. per 100 units

200	500	1500	2500
\$1.46	\$1.42	\$1.38	\$1.34

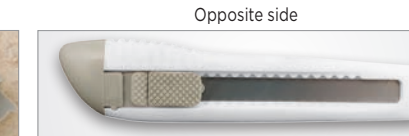
(4A)



White/Grey



Snap-Off Tool



Opposite side

### 2009 2-IN-1 MARKER/CUTTER

- 4-section blade with locking slide
- Felt-tip permanent marker with cap-off design
- Two ink color options

Size 5.38"L x 0.75"W  
 Imprint Location Front  
 Imprint Size 3.00"L x 0.75"H  
 Imprint Method Screen Print  
 Packaging Poly Bag  
 Shipping Weight 5.0 lbs. per 100 unit

200	500	1500	2500
\$1.26	\$1.24	\$1.22	\$1.20

(4A)



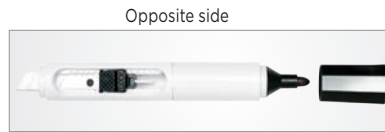
Blue



Black



Snap-Off Tool



Opposite side

### 2004 SAFETY CUTTER KEY TAG

- Spring-loaded, retractable blade
- Split key ring and plastic body

Size 2.75"L x 1.25"W x 0.50"D  
 Imprint Location Handle  
 Imprint Size 1.50"L x 0.75"H  
 Imprint Method Pad Print  
 Packaging Poly Bag  
 Shipping Weight 3.0 lbs. per 100 units

200	500	1500	2500
\$1.04	\$1.02	\$1.00	\$0.98

(4A)



Blue



White



Green



Opposite Side



Blue



Red

### 2463 BUDGET TIRE GAUGE

- 10-75 PSI range
- Durable plastic body
- Pocket clip

Size	6.00"L x 1.00"W		
Imprint Location	Barrel		
Imprint Size	2.00"L x 0.30"H		
Imprint Method	Pad Print		
Packaging	Poly Bag		
Shipping Weight	5.5 lbs. per 100 units		

	200	500	1500	2500	(4A)
	\$1.86	\$1.84	\$1.82	\$1.80	



Blue



Black



Silver

### 2468 MINI MAGNETIC TIRE GAUGE

- 10-50 PSI range
- KPA bar
- ABS plastic head and anodized aluminum body
- Pocket clip

Size	3.25"L x 0.70"W		
Imprint Location	Barrel		
Imprint Size	1.25"L x 0.25"H		
Imprint Method	Pad Print		
Packaging	Poly Bag		
Shipping Weight	2.1 lbs. per 100 units		

	200	500	1500	2500	(4A)
	\$1.86	\$1.84	\$1.82	\$1.80	

Sticks to Metal Surfaces



MAGNETIC



Black

### 2472 TIRE TOOL KEY TAG

- 10-50 PSI range
- Depth gauge in millimeter and seconds
- Key ring on chain

Size	4.75"L x 0.88"W x 1.00"D		
Imprint Location	Barrel		
Imprint Size	1.25"L x 0.25"H		
Imprint Method	Pad Print		
Packaging	Poly Bag		
Shipping Weight	1.0 lbs. per 100 units		

	200	500	1500	2500	(4A)
	\$2.42	\$2.24	\$2.20	\$2.16	



### 2425 REGULAR TIRE GAUGE

- 10-50 PSI range
- Metal body with plastic head
- Pocket clip

Size	5.75"L x 0.75"W		
Imprint Location	Barrel		
Imprint Size	2.00"L x 0.75"H		
Imprint Method	Screen Print		
Packaging	Poly Bag		
Shipping Weight	5.0 lbs. per 100 units		

100	250	500	1000	(4A)
\$3.44	\$3.38	\$3.32	\$3.26	



Silver



Gold

### 2460 HIGH-PRESSURE TIRE GAUGE

- 20-120 PSI range
- Metal head and body
- Pocket clip

Size	5.75"L x 0.75"W		
Imprint Location	Barrel		
Imprint Size	2.00"L x 0.75"H		
Imprint Method	Screen Print		
Packaging	Poly Bag		
Shipping Weight	7.5 lbs. per 100 units		

100	250	500	1000	(4A)
\$4.82	\$4.62	\$4.42	\$4.28	



Silver

### 2093 MINI TIRE GAUGE KEY TAG

- 10-50 PSI range
- Key ring on chain
- Metal head and body

Size	3.25"L x 0.50"W		
Imprint Location	Barrel		
Imprint Size	1.25"L x 1.00"H		
Imprint Method	Screen Print		
Packaging	Poly Bag		
Shipping Weight	5.5 lbs. per 100 units		

100	250	500	1000	(4A)
\$4.86	\$4.66	\$4.52	\$4.46	



Black



White



White

### 2591 SOFT VINYL TAPE MEASURE

- 60"/150cm coated fabric tape
- Metal clip with logo tag folds over to neatly hold tape

Size	2.25"L x 1.13"W x 0.75"D		
Imprint Location	Tag		
Imprint Size	1.25"L x 0.38"H		
Imprint Method	Pad Print		
Packaging	Poly Bag		
Shipping Weight	3.8 lbs. per 100 units		

	200	500	1500	2500
	\$1.78	\$1.58	\$1.48	\$1.40

(4A)



Blue

Red

White

### 2584 ROUND TAPE MEASURE KEY TAG

- 60"/150cm coated fabric tape
- Automatic release button
- Plastic body with Split key ring on chain

Size	2.00"L x 0.75"W		
Imprint Location	Front Side		
Imprint Size	1.13" Dia.		
Imprint Method	Screen Print		
Packaging	Poly Bag		
Shipping Weight	5.5 lbs. per 100 units		

	200	500	1500	2500
	\$1.78	\$1.62	\$1.58	\$1.52

(4A)



Black

Red

Blue

### 2098 6-FT CARABINER TAPE MEASURE

- Metal tape with inch and centimeter markings

Size	2.63"L x 1.88"W x 0.69"D		
Imprint Location	Front		
Imprint Size	1.03" Dia.		
Imprint Method	Pad Print		
Packaging	Poly Bag		
Packaging Size	2.75"L x 2.00"H x 0.75"D		
Shipping Weight	10.0 lbs. per 100 units		

	200	500	1500	2500
	\$3.06	\$2.92	\$2.84	\$2.76

(4A)



Silver

Magnetic Back



MAGNETIC

### 2598 10-FT MAGNETIC TAPE MEASURE

- Unique braking wheel on side
- Metal tape with inch and centimeter markings

Size	2.25" Dia. x 1.00"W		
Imprint Location	Front Side		
Imprint Size	1.25" Dia.		
Imprint Method	Digital/Screen Print		
Packaging	Box		
Packaging Size	3.13"L x 2.34"H x 1.50"W		
Shipping Weight	22.0 lbs. per 100 units		

	100	250	500	1000
	\$4.18	\$4.12	\$4.06	\$4.00

(4A)

### 2597 10-FT CARABINER TAPE MEASURE

- Rubberized base for a no-slip grip
- Metal tape with inch and centimeter
- Easily clips to belt loop
- Blade locking mechanism
- Includes full-color epoxy dome imprint for one setup charge

Size	4.00"L x 3.00"W x 1.50"D		
Imprint Location	Front Side		
Imprint Size	1.30" Dia.		
Imprint Method	Epoxy Dome		
Packaging	Box		
Packaging Size	4.25"L x 3.25"W x 1.75"D		
Shipping Weight	39.0 lbs. per 100 units		

50	100	150	250	(4A)
<b>\$6.86</b>	<b>\$6.78</b>	<b>\$6.70</b>	<b>\$6.62</b>	



Black/Yellow

### 2099 16-FT CARABINER TAPE MEASURE

- Rubberized base for a non-slip grip
- Metal tape with inch and centimeter markings
- Easily clips to belt loop
- Blade locking mechanism
- Includes full-color epoxy dome imprint for one setup charge

Size	4.00"L x 3.00"W x 1.50"D		
Imprint Location	Front Side		
Imprint Size	1.30" Dia.		
Imprint Method	Epoxy Dome		
Packaging	Box		
Packaging Size	4.25"L x 3.25"W x 1.75"D		
Shipping Weight	2099 - 44 lbs. per 100 units		

50	100	150	250	(4A)
<b>\$7.04</b>	<b>\$6.94</b>	<b>\$6.84</b>	<b>\$6.74</b>	



Back - Belt Clip



### 2901 9" MAGNETIC LEVEL

- Torpedo-style with three vials: level, plumb and 45°
- Center vial has convenient top view
- Plastic body

Size	9.00"L x 1.50"W x 0.63"D		
Imprint Location	Top Left		
Imprint Size	2.50"L x 0.50"H		
Imprint Method	Screen Print		
Packaging	Bulk		
Shipping Weight	15.5 lbs. per 100 units		

100	250	500	1000	(4A)
<b>\$3.54</b>	<b>\$3.38</b>	<b>\$3.18</b>	<b>\$3.02</b>	



Yellow

Magnet strip





Black



Neon Green

Scissors separate



## 2024 UTILITY SCISSORS WITH MAGNETIC HOLDER

- Stainless steel construction
- Serrated edge for tough cuts
- Jar lid opener/gripper
- Magnetic plastic blade cover

Size	8.75"L x 3.38"W x .50"D		
Imprint Location	Cover		
Imprint Size	2.25"L x .50"H		
Imprint Method	Pad Print		
Packaging	Poly Bag		
Shipping Weight	30.0 lbs. per 100 units		

	100	250	500	1000
	\$5.94	\$5.90	\$5.86	\$5.82 <sup>(4A)</sup>

**NEW**



Grey



Blades come apart

Scissors separate



Back



## 2124 MULTI TOOL SCISSORS

- Magnetic holder
- Stainless steel construction
- Scissors come apart for easy cleaning
- Jar lid opener/gripper, bottle opener, screwdriver
- Serrated edges for tough cuts

Size	9.00"L x 3.00"W		
Imprint Location	Cover		
Imprint Size	2.50"L x 0.50"H		
Imprint Method	Pad Print		
Packaging	Poly Bag		
Shipping Weight	30 lbs. per 100 units		

	50	100	150	250
	\$6.58	\$6.52	\$6.46	\$6.40 <sup>(4A)</sup>

### 1146 PEN/STYLUS KEY TAG

- Stylus allows users to type accurately and comfortably on touch screens
- Aluminum barrel with blue ink

Size	3.87"L x 0.35"W		
Imprint Location	Barrel		
Imprint Size	1.1"L x 0.25"H		
Imprint Method	Laser Engrave		
Packaging	Poly Bag		
Shipping Weight	2.0 lbs. per 100 units		

200	500	1500	2500	(4A)
<b>\$1.64</b>	<b>\$1.56</b>	<b>\$1.48</b>	<b>\$1.44</b>	



Black

### 1104 SLIM ISTYLUS PEN

- All metal twist pen
- Black ink

Size	5.25"L x 0.44"W		
Imprint Location	Barrel		
Imprint Size	1.75"L x 0.19"H		
Imprint Method	Laser Engrave		
Packaging	Poly Bag		
Shipping Weight	2.1 lbs. per 100 units		

200	500	1500	2500	(4A)
<b>\$2.02</b>	<b>\$2.00</b>	<b>\$1.98</b>	<b>\$1.96</b>	



Black

Blue

Red

### 1105 TRI-STYLUS

- Stylus allows users to type accurately and comfortably on touch screens
- Aluminum barrel with black ink
- Light comes from the silver side of pen

Size	3.85"L x 0.50"W		
Imprint Location	Barrel		
Imprint Size	1.50"L x 0.30"H		
Imprint Method	Laser Engrave		
Packaging	Poly Bag		
Shipping Weight	2.0 lbs. per 100 units		

200	500	1500	2500	(4A)
<b>\$3.06</b>	<b>\$3.00</b>	<b>\$2.94</b>	<b>\$2.90</b>	



Smoke

Blue

Black

Push bulb turns light on / off





Black



Navy



Pearl

### 1144 COBRA™ PEN

- Military-style clip pen top stays flush with pocket so pocket flaps close easily
- Twist-action mechanism
- Plastic barrel with metal trim
- Ballpoint pen with blue ink

Size	4.75"L x 0.38"W		
Imprint Location	Barrel		
Imprint Size	1.50"L x 1.00"H		
Imprint Method	Screen Print		
Packaging	Poly Bag		
Shipping Weight	2.0 lbs. per 100 units		

	200	500	1500	2500	(4A)
	\$3.20	\$3.00	\$2.80	\$2.60	



Black



Smoke



Blue

### 1700 LOGO TOP CLICK PEN\*

- Metal body and pocket clip
- Ballpoint pen with blue ink
- Flared top for a larger, clearer logo

\* Includes logo top and one-color barrel imprint for one setup charge

Size	5.50"L x 0.63"W		
Imprint Location	Barrel Pen Top		
Imprint Size	Barrel - 2.00"L x 0.20"H Pen Top - 0.31" Dia.		
Imprint Method	Laser Engrave Epoxy Dome		
Packaging	Poly Bag		
Shipping Weight	3.5 lbs. per 100 units		

	100	250	500	1000	(4A)
	\$3.12	\$3.08	\$3.04	\$3.00	



FULL-COLOR  
DECORATION



Blue



Black

### 1129 COMFORT GRIP LOGO TOP PEN\*

- Twist-action with soft rubber grip
- Ballpoint pen with black ink

\* Includes logo top and one-color barrel imprint for one setup charge

Size	5.38"L x 0.63"W		
Imprint Location	Barrel Pen Top		
Imprint Size	Barrel - 1.25"L x 0.25"W Pen Top - 0.25" Dia.		
Imprint Method	Black Laser, Epoxy Dome		
Packaging	Poly Bag		
Shipping Weight	5.7 lbs. per 100 units		

	100	250	500	1000	(4A)
	\$4.08	\$4.00	\$3.92	\$3.84	



FULL-COLOR  
DECORATION

### 1185 LOGO TOP PREMIER II PEN\*

- Twist-action mechanism
- Metal body and pocket clip
- Ballpoint pen with blue ink

\* Includes logo top and one-color barrel imprint for one setup charge

Size	5.38"L x 0.63"W			
Imprint Location	Barrel			
Imprint Size	Pen Top - 1.25"L x 0.75"H			
	Pen Top - 0.26" Dia.			
Imprint Method	Screen Print Epoxy Dome			
Packaging	Poly Bag			
Shipping Weight	5.5 lbs. per 100 units			
	100	250	500	1000
	\$5.10	\$4.60	\$4.20	\$4.08



Silver



Black



FULL-COLOR  
DECORATION

### 1134 LOGO TOP PREMIER PEN\*

### 1133 LOGO TOP PREMIER PENCIL

### 1138 LOGO TOP PREMIER PEN & PENCIL SET\*

- Twist-action mechanism
- Flared top for a larger, clearer logo
- Ballpoint pen with black ink
- Mechanical pencil with 0.7mm lead and eraser

\* Includes logo top and one-color barrel imprint for one setup charge

Size	Pen - 5.63"L x 0.50"W Pencil - 5.63"L x 0.50"W			
Imprint Location	Barrel			
Imprint Size	Pen Top - 1.50"L x 0.20"H			
	Pen Top - 0.31" Dia.			
Imprint Method	Laser Engrave Epoxy Dome			
Packaging	Poly Bag			
Shipping Weight	Pen - 5.0 lbs. per 100 units Pencil - 5.7 lbs. per 100 units Set - 26.0 lbs. per 100 units			

	100	250	500	1000
1134	\$5.08	\$4.88	\$4.68	\$4.44
1133	\$5.68	\$5.52	\$5.36	\$5.26
	50	100	150	250
1138	\$12.84	\$12.64	\$12.44	\$12.14



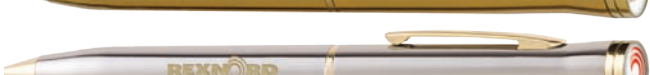
Black



Gold



Silver/Gold



1138 Packaged with gift box (included in price)



FULL-COLOR  
DECORATION

### 1147 SLIM LOGO TOP PEN\*

- Flared top for a larger, clearer logo
- Metal body and pocket clip
- Ballpoint pen with blue ink

\* Includes logo top and one-color barrel imprint for one setup charge

Size	5.50"L x 0.50"W			
Imprint Location	Barrel			
Imprint Size	Pen Top - 1.50"L x 0.20"H			
	Pen Top - 0.31" Dia.			
Imprint Method	Laser Engrave Epoxy Dome			
Packaging	Poly Bag			
Shipping Weight	4.0 lbs. per 100 units			
	100	250	500	1000
	\$5.50	\$5.24	\$4.86	\$4.50



Silver



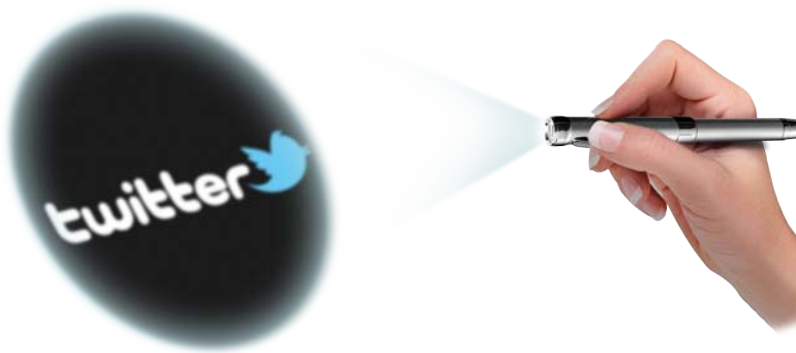
Red



Blue



FULL-COLOR  
DECORATION



Black



Silver



Black



Silver

One-Color Black Projection



Full-Color Projection



1827/1828 Set eco deluxe box (included in price)



### 1818 FULL-COLOR LOGO PROJECTION PEN

### 1817 BLACK LOGO PROJECTION PEN

- Ballpoint pen with blue ink
- LED bulb
- Batteries included

Size	5.63"L x 0.63"W
Imprint Location	Barrel
Projection	Projection
Imprint Size	Barrel - 1.25"L x 0.75"H
	Projection - 0.20" Dia.
Imprint Method	Barrel - Pad Print
	Projection - Acetate Insert
Packaging	Poly Bag
Shipping Weight	5.0 lbs. per 100 units

### 1838 FULL-COLOR LOGO PROJECTION KEY TAG

### 1837 BLACK LOGO PROJECTION KEY TAG

- Split key ring and metal body
- LED bulb
- Batteries included

Size	3.00"L x 0.63"W
Imprint Location	Barrel
Projection	Projection
Imprint Size	Barrel - 1.50"L x 0.31"H
	Projection - 0.20" Dia.
Imprint Method	Barrel - Pad Print
	Projection - Acetate Insert
Packaging	Poly Bag
Shipping Weight	5.0 lbs. per 100 units

### 1828 FULL-COLOR LOGO PROJECTION PEN & KEY TAG SET

### 1827 BLACK LOGO PROJECTION PEN & KEY TAG SET

Packaging	Eco Deluxe Box
Packaging Size	7.13"L x 2.19"W x 1.19"D
Shipping Weight	25.0 lbs. per 100 units

	50	100	150	250	(4A)
<b>1818</b>	<b>\$8.52</b>	<b>\$8.48</b>	<b>\$8.40</b>	<b>\$8.32</b>	
<b>1817</b>	<b>\$7.20</b>	<b>\$7.10</b>	<b>\$7.00</b>	<b>\$6.90</b>	
<b>1828</b>	<b>\$15.24</b>	<b>\$15.14</b>	<b>\$15.04</b>	<b>\$14.94</b>	
<b>1827</b>	<b>\$13.40</b>	<b>\$13.30</b>	<b>\$13.20</b>	<b>\$13.12</b>	
	50	100	150	250	(4A)
<b>1838</b>	<b>\$6.70</b>	<b>\$6.60</b>	<b>\$6.50</b>	<b>\$6.40</b>	
<b>1837</b>	<b>\$5.80</b>	<b>\$5.60</b>	<b>\$5.50</b>	<b>\$5.40</b>	



**1345 METAL PEN**

**1346 METAL PENCIL**

**1358 METAL PEN & PENCIL SET**

- Click-action mechanism with rubber grip
- Ballpoint pen with black ink
- Mechanical pencil with 0.7mm lead and eraser

Size Pen - 5.38"L x 0.60"W  
Pencil - 5.63"L x 0.60"W  
Imprint Location Barrel  
Imprint Size 1.75"L x 0.19"H  
Imprint Method Laser Engrave  
Packaging Poly Bag  
Shipping Weight Pen - 2.0 lbs. per 100 units  
Pencil - 2.0 lbs. per 100 units  
Set - 4.0 lbs. per 100 units

	200	500	1500	2500	(4A)
<b>1345</b>	<b>\$1.76</b>	<b>\$1.70</b>	<b>\$1.64</b>	<b>\$1.58</b>	
<b>1346</b>	<b>\$1.68</b>	<b>\$1.62</b>	<b>\$1.56</b>	<b>\$1.50</b>	
<b>1358</b>	<b>\$3.04</b>	<b>\$2.98</b>	<b>\$2.92</b>	<b>\$2.86</b>	



Gunmetal



Red



Blue



**1151 GRAND METAL PEN**

**1152 GRAND METAL PENCIL**

**1360 GRAND METAL PEN & PENCIL SET**

- Push-action mechanism
- Metal body
- Pocket clip
- Sleek metallic casing
- Ballpoint pen with black ink
- Mechanical pencil with 0.7mm lead

Size Pen - 5.63"L x 0.50"W  
Pencil - 5.63"L x 0.50"W  
Imprint Location Barrel  
Imprint Size Barrel - 1.50"L x 0.20"H  
Imprint Method Laser Engrave  
Packaging Poly Bag  
Shipping Weight Pen - 4.1 lbs. per 100 units  
Pencil - 4.1 lbs. per 100 units  
Set - 8.2 lbs. per 100 units

	200	500	1500	2500	(4A)
<b>1151</b>	<b>\$2.30</b>	<b>\$2.20</b>	<b>\$2.10</b>	<b>\$2.00</b>	
<b>1152</b>	<b>\$2.02</b>	<b>\$2.08</b>	<b>\$1.96</b>	<b>\$1.84</b>	
<b>1360</b>	<b>\$3.32</b>	<b>\$3.26</b>	<b>\$3.20</b>	<b>\$3.14</b>	



Blue



Red



Black



Silver





Navy



Burgundy



Black



**1343 BUDGET PEN**

**1344 BUDGET PENCIL**

**1359 BUDGET PEN & PENCIL SET**

- Plastic body with rubberized grip
- Ballpoint pen with black ink
- Mechanical pencil with 0.7mm lead and eraser

Size	Pen - 5.38"L x 0.60"W
	Pencil - 5.63"L x 0.60"W
Imprint Location	Barrel
Imprint Size	1.75"L x 0.50"H
Imprint Method	Screen Print
Packaging	Poly Bag
Shipping Weight	Pen - 2.1 lbs. per 100 units
	Pencil - 2.1 lbs. per 100 units
	Set - 5.5 lbs. per 100 units

	200	500	1500	2500	(4A)
<b>1343</b>	<b>\$1.12</b>	<b>\$1.06</b>	<b>\$1.00</b>	<b>\$0.94</b>	
<b>1344</b>	<b>\$1.18</b>	<b>\$1.12</b>	<b>\$1.06</b>	<b>\$1.00</b>	
<b>1359</b>	<b>\$2.04</b>	<b>\$2.00</b>	<b>\$1.96</b>	<b>\$1.92</b>	



Red



Pink



Orange



Green



Blue



ECO-FRIENDLY

**1713 ECO PEN**

- Push-action mechanism
- Made from recycled material
- Ballpoint pen with black ink

Size	5.50"L x 0.50"W
Imprint Location	Barrel
Imprint Size	1.75"L x 1.00"H
Imprint Method	Screen Print
Packaging	Bulk
Shipping Weight	1.4 lbs. per 100 units

	200	500	1500	2500	(4A)
<b>\$1.40</b>	<b>\$1.30</b>	<b>\$1.20</b>	<b>\$1.10</b>		



Ink colors



ECO-FRIENDLY

**1101 MINI COLORED INK ECO PEN MATCHBOX**

- Four different ink colors
- Unique eco-friendly product

Pen Size	3.63"L x 0.38"W
Imprint Location	Box Front
Imprint Size	3.00"L x 1.25"H
Imprint Method	Screen Print
Packaging	Bulk
Packaging Size	4.00"L x 1.63"W x 0.50"D
Shipping Weight	4.0 lbs. per 100 units

	200	500	1500	2500	(4A)
<b>\$2.48</b>	<b>\$2.40</b>	<b>\$2.32</b>	<b>\$2.24</b>		

### 1342 ECO PASSWORD PAD

- Alphabetized for ease of use
- Includes space for account, username, password hint and password
- Durable coated cover with metal ring binding and elastic band holds pad neatly in place
- Pad is made from recycled materials

Size	6.00"L x 4.00"W x 0.75"D		
Imprint Location	Front		
Imprint Size	2.00"L x 4.00"H		
Imprint Method	Screen Print		
Packaging	Poly Bag		
Shipping Weight	24.3 lbs. per 100 units		

	100	250	500	1000	(4A)
	<b>\$3.80</b>	<b>\$3.70</b>	<b>\$3.60</b>	<b>\$3.50</b>	



Blue



Brown



Black



### 1350 ECO CARD WHEEL

- Ten double sided easy-to-remove clear vinyl sleeves
- Thick and durable recycled paper cover
- Elastic band holds sleeves neatly in place

Size	4.00"L x 2.56"W x 0.63"D		
Imprint Location	Front		
Imprint Size	2.00"L x 2.00"H		
Imprint Method	Pad Print		
Packaging	Poly Bag		
Shipping Weight	14.0 lbs. per 100 units		

	100	250	500	1000	(4A)
	<b>\$4.12</b>	<b>\$4.04</b>	<b>\$3.96</b>	<b>\$3.88</b>	



Blue



Brown



Black





White - One-Color Imprint



White - Full-Color Imprint

### 1201 MAGNIFIER/CREDIT CARD HOLDER

- 3X magnification
- Fits great in wallet

Size	3.75" L x 2.38" W		
Imprint Location	Case Front		
Imprint Size	3.00" L x 1.50" H		
Imprint Method	Screen / Digital Print		
Packaging	Bulk		
Shipping Weight	1.0 lbs. per 100 units		

<b>One Color Imprint</b>				
200	500	1500	2500	(4A)
<b>\$1.54</b>	<b>\$1.48</b>	<b>\$1.40</b>	<b>\$1.32</b>	
<b>Two or More Color Imprint</b>				
200	500	1500	2500	(4A)
<b>\$1.60</b>	<b>\$1.56</b>	<b>\$1.52</b>	<b>\$1.48</b>	



White - Full-Color Imprint



White - One-Color Imprint

### 1316 BUSINESS CARD MAGNIFIER

- 4X magnification
- Fits great in wallet

Size	3.38" L x 2.13" W		
Imprint Location	Front		
Imprint Size	3.125" L x 0.75" H		
Imprint Method	Screen / Digital Print		
Packaging	Poly Bag		
Shipping Weight	1.0 lbs. per 100 units		

<b>One Color Imprint</b>				
200	500	1500	2500	(4A)
<b>\$1.16</b>	<b>\$1.14</b>	<b>\$1.12</b>	<b>\$1.10</b>	
<b>Two or More Color Imprint</b>				
200	500	1500	2500	(4A)
<b>\$1.80</b>	<b>\$1.70</b>	<b>\$1.60</b>	<b>\$1.50</b>	



White - Full-Color Imprint

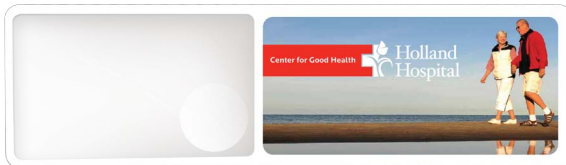
White - One-Color Imprint

### 1206 CLASSIC MAGNIFIER

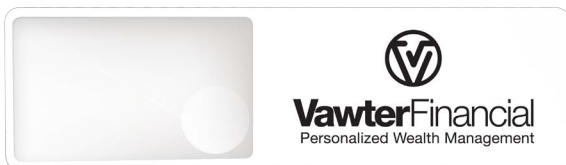
- 3X magnification
- Large 2.5" diameter surface

Size	5.51" L x 2.68" W		
Imprint Location	Handle		
Imprint Size	2.00" L x 1.25" H		
Imprint Method	Screen / Digital Print		
Packaging	Cello Sleeve		
Shipping Weight	1.0 lbs. per 100 units		

<b>One Color Imprint</b>				
200	500	1500	2500	(4A)
<b>\$1.56</b>	<b>\$1.50</b>	<b>\$1.44</b>	<b>\$1.38</b>	
<b>Two or More Color Imprint</b>				
200	500	1500	2500	(4A)
<b>\$1.76</b>	<b>\$1.72</b>	<b>\$1.68</b>	<b>\$1.60</b>	



White - Full-Color Imprint



White - One-Color Imprint

### 1205 DUO MAGNIFIER BOOKMARK

- 3X magnification with 5X inset

Size	7.69" L x 2.12" W		
Imprint Location	Front Right		
Imprint Size	3.50" L x 1.50" H		
Imprint Method	Screen Print / Digital Print		
Packaging	Cello Sleeve		
Shipping Weight	1.5 lbs. per 100 units		

<b>One Color Imprint</b>				
200	500	1500	2500	(4A)
<b>\$1.78</b>	<b>\$1.72</b>	<b>\$1.66</b>	<b>\$1.60</b>	
<b>Two or More Color Imprint</b>				
200	500	1500	2500	(4A)
<b>\$1.96</b>	<b>\$1.92</b>	<b>\$1.88</b>	<b>\$1.84</b>	



**UNIQUE SHAPED  
BOOKMARK MAGNIFIER**

- 4X magnification
- Side ruler markings in inches and centimeters
- Includes protective cellophane sleeve

**1233 HOUSE BOOKMARK  
MAGNIFIER**

Size 7.38"L x 2.50"W  
 Imprint Location Top  
 Imprint Size 1.75"L x 1.13"H

**1232 COMPUTER BOOKMARK  
MAGNIFIER**

Size 7.25"L x 2.50"W  
 Imprint Location Top  
 Imprint Size 1.94"L x 1.25"H

Imprint Method Screen Print/Digital Print  
 Packaging Cello Sleeve  
 Shipping Weight 1.0 lbs. per 100 units

200	500	1500	2500
\$1.84	\$1.78	\$1.72	\$1.66

**1228 PAGE MARKER  
MAGNIFIER**

- 4X magnification
- Side ruler marking in inches and centimeters
- Includes protective cellophane sleeve

Size 7.38"L x 2.50"W  
 Imprint Location Top  
 Imprint Size 2.25"L x 1.75"H  
 Imprint Method Screen Print / Digital Print  
 Packaging Cello Sleeve  
 Shipping Weight 1.0 lbs. per 100 units

**One Color Imprint**

200	500	1500	2500
\$2.10	\$2.00	\$1.90	\$1.80

**Two or More Color Imprint**

200	500	1500	2500
\$2.30	\$2.20	\$2.10	\$2.00

**1202 TASSEL-TOP  
BOOKMARK MAGNIFIER**

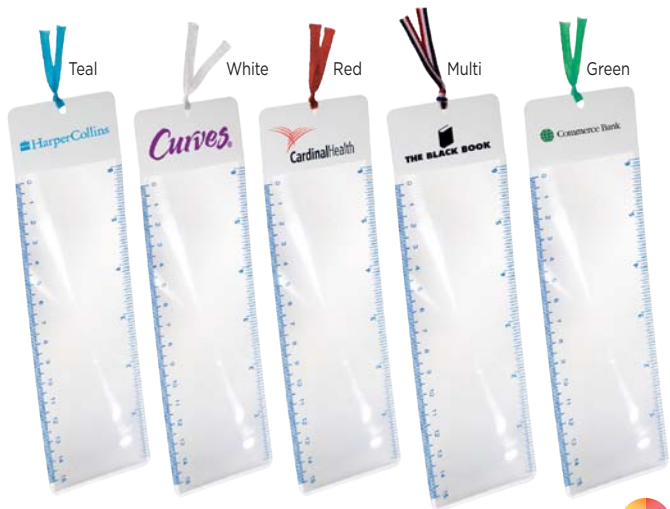
- 4X magnification
- Side ruler markings in inches and centimeters
- Includes protective cellophane sleeve

Size 7.75"L x 2.50"W  
 Imprint Location Top  
 Imprint Size 2.25"L x 0.75"H  
 Imprint Method Screen Print  
 Packaging Cello Sleeve  
 Shipping Weight 1.0 lbs. per 100 units

200	500	1500	2500
\$1.52	\$1.46	\$1.40	\$1.34



Blue White White



5x bubble Magnification



White

### 1207 LIGHTED DUO MAGNIFIER

- 3x magnification with 5x bubble
- Bright LED light

Size	3.85"L x 2.36"W x 0.23"D		
Imprint Location	Front		
Imprint Size	1.00"L x 0.70"H		
Imprint Method	Screen Print		
Packaging	Poly Bag		
Shipping Weight	6.0 lbs. per 100 units		

100	250	500	1000	(4A)
\$4.84	\$4.76	\$4.68	\$4.60	

Magnifier



Magnetic



Clear

### 1148 3-IN-1 DESK TOOL

- Letter opener top
- Straight edge ruler in inches
- 3X magnification bubble

Size	3.75"L x 2.25"W x 0.25"D			
Imprint Location	Front			
Imprint Size	1.50"W x 0.38"H			
Imprint Method	Screen Print			
Packaging	Poly Bag			
Shipping Weight	6.0 lbs. per 100 units			

200	500	1500	2500	(4A)
\$2.26	\$2.24	\$2.22	\$2.20	

Prop up Phone



Cleans Screen



### 1901 GEL WEDGE AND WIPE

- 3 different angles of use
- Screen cleaner on one side of prop
- Adhesive free and washable

\*Imprint has a muted effect on microfiber material

Size	2.56"L x 1.69"W x 0.94"D		
Imprint Location	Side		
Imprint Size	1.00"L x .75"H		
Imprint Method	Digital Print		
Packaging	Poly Bag		
Shipping Weight	10 lbs. per 100 units		

100	250	500	1000	(4A)
\$4.90	\$4.80	\$4.70	\$4.60	



### 1023 SAFETY PIN PACK

- 45 colored safety pins per pack
- Three different sizes: large 2.20", medium 1.80" and small 1.18"
- Clear pouch

Imprint Location	Pouch Front		
Imprint Size	2.25"L x 2.25"H		
Imprint Method	Screen Print		
Packaging	Bulk		
Packaging Size	4.50"L x 5.00"W x 0.25"D		
Shipping Weight	6.0 lbs. per 100 units		

100	250	500	1000	(4A)
\$3.26	\$3.24	\$3.22	\$3.20	

**NEW**



### 1507 FLAG PACK

- 240 flags per pack
- Perfect size for purse or desk
- Clear pouch

Flag Size	1.88"L x 1.88"W		
Imprint Location	Pouch Front		
Imprint Size	3.00"L x 3.00"H		
Imprint Method	Screen Print		
Packaging	Bulk		
Packaging Size	4.50"L x 5.00"W x 0.25"D		
Shipping Weight	6.0 lbs. per 100 units		

100	250	500	1000	(4A)
\$3.20	\$3.00	\$2.90	\$2.80	

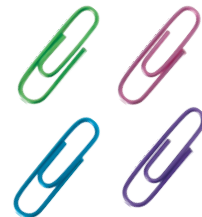


### 1010 CLIP PACK

- Includes 100 colored paper clips
- Clear pouch

Clip Size	1.13"L x 0.38"W		
Imprint Location	Pouch Front		
Imprint Size	2.25"L x 2.25"H		
Imprint Method	Screen Print		
Packaging	Bulk		
Packaging Size	4.25"L x 3.38"W x 0.38"D		
Shipping Weight	9.0 lbs. per 100 units		

100	250	500	1000	(4A)
\$3.00	\$2.80	\$2.60	\$2.40	



**NEW****1022 GEL HIGHLIGHTER PACK**

- Includes 5 mini wax highlighters
- Won't dry out if left uncapped or bleed through paper
- Colors include: pink, orange, green, yellow, blue
- Clear pouch



Highlighter Size	3.10" x .52" W			
Imprint Location	Pouch Front			
Imprint Size	2.25"L x 2.25"H			
Imprint Method	Screen Print			
Packaging	Bulk			
Packaging Size	4.125"L x 3.25"W x 0.38"D			
Shipping Weight	6.5 lbs. per 100 units			

200	500	1500	2500	(4A)
\$2.78	\$2.76	\$2.74	\$2.72	

**1020 MINI HIGHLIGHTER PACK**

- Eight mini-highlighters in see-through pouch
- Colors included: two pink, two yellow, one orange, one green, one blue and one purple



Highlighter Size	2.25"L x 0.75" W			
Imprint Location	Pouch Front			
Imprint Size	2.25"L x 2.25"H			
Imprint Method	Screen Print			
Packaging	Bulk			
Packaging Size	3.88"L x 3.88"W x 0.75"D			
Shipping Weight	8.5 lbs. per 100 units			

200	500	1500	2500	(4A)
\$2.92	\$2.86	\$2.80	\$2.74	

**1016 MINI MARKER PACK**

- Colors included: green, blue, orange, pink and black permanent markers



Marker Size	3.38"L x 0.63" W			
Imprint Location	Pouch Front			
Imprint Size	2.25"L x 2.50"H			
Imprint Method	Screen Print			
Packaging	Bulk			
Packaging Size	4.25"L x 3.50"W x 0.63"D			
Shipping Weight	7.0 lbs. per 100 units			

200	500	1500	2500	(4A)
\$3.16	\$2.96	\$2.76	\$2.56	



### 1012 CRAYON PACK

- Includes eight crayons
- Colors included: blue, orange, green, light blue, pink, yellow, red and purple

Crayon Size	3.50"L x 0.31"W		
Imprint Location	Pouch Front		
Imprint Size	2.25"L x 2.25"H		
Imprint Method	Screen Print		
Packaging	Bulk		
Packaging Size	4.38"L x 3.38"W x 0.32"D		
Shipping Weight	10.4 lbs. per 100 units		

200	500	1500	2500	(4A)
\$2.28	\$2.20	\$2.12	\$2.04	



### 1021 MINI GEL PEN PACK

- Colors included: green, pink, hot pink, purple, blue and orange

Pen Size	3.50"L x 0.50"W		
Imprint Location	Pouch Front		
Imprint Size	2.25"L x 2.25"H		
Imprint Method	Screen Print		
Packaging	Bulk		
Packaging Size	4.38"L x 3.38"W x 0.50"D		
Shipping Weight	6.5 lbs. per 100 units		

200	500	1500	2500	(4A)
\$2.52	\$2.46	\$2.40	\$2.34	



### 1008 MECHANICAL COLORED LEAD PENCIL PACK

- Includes five mechanical pencils in see-through pouch
- 0.9mm pencil lead
- Translucent plastic pencils with eraser ends
- Click-action mechanism
- Colors included: blue, green, purple, orange and red

Pencil Size	5.25"L x 0.30"W		
Imprint Location	Pouch Front		
Imprint Size	1.56"L x 4.00"H		
Imprint Method	Screen Print		
Packaging	Bulk		
Packaging Size	6.25"L x 2.13"W x 0.38"D		
Shipping Weight	6.0 lbs. per 100 units		

200	500	1500	2500	(4A)
\$2.52	\$2.46	\$2.40	\$2.34	



5151



Shown with One-Color Decoration



Shown with Full-Color Decoration



Shown with One-Color Decoration

5101



Shown with One-Color Decoration



Shown with Full-Color Decoration



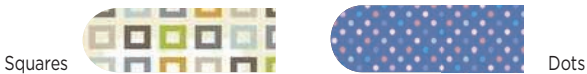
Shown with One-Color Decoration



5101 Fashion Designs



Geometric Designs



Pattern Designs



Floral Designs



EMERY BOARDS

- European emery paper laminated to wood veneer
  - Three colors of emery paper
  - Imprint options range from one-color to full-color photograph\*
- \*Two or more imprint colors for one setup charge

5151 MINI

Item Size 3.00"L x 0.50"W  
Imprint Size 2.40"L x 0.38"H

One Color Imprint				
750	1500	3000	5000	(4A)
\$0.20	\$0.18	\$0.16	\$0.14	
Two or More Color Imprint				
750	1500	3000	5000	(4A)
\$0.26	\$0.24	\$0.22	\$0.20	

5101 REGULAR

Item Size 4.63"L x 0.50"W  
Imprint Size 4.00"L x 0.38"H  
Imprint Method Digital Print

Packaging Bulk  
Shipping Weight 1.0 lbs. per 100 units

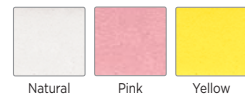
One Color Imprint				
750	1500	3000	5000	(4A)
\$0.24	\$0.22	\$0.20	\$0.16	
Two or More Color Imprint				
750	1500	3000	5000	(4A)
\$0.28	\$0.26	\$0.24	\$0.22	

STOCK DESIGN EMERY BOARDS

- Full color stock designs available on the 5101
- Stock designs done on the whole board
- Look on website to see full version of stock designs

Stock Design Imprint				
750	1500	3000	5000	(4A)
\$0.28	\$0.26	\$0.24	\$0.22	

PAPER COLOR OPTIONS



## EMERY BOARDS

- No die charge
- Three colors of emery paper
- Imprint options range from one-color to full-color photograph\*

\*Two or more imprint colors for one setup charge

### 5108 LARGE

Item Size 7.00"L x 0.75"W  
Imprint Size 6.00"L x 0.50"W

### 5204 RIBBON

Item Size 3.00"L x 1.38"W  
Imprint Size 1.75"L x 0.34"H

### 5237 ROUND

Item Size 1.50"Dia.  
Imprint Size 1.38"Dia.

### 5247 BOTTLE

Item Size 4.43"L x 1.29"W  
Imprint Size 2.50"L x 0.90"W

### 5248 DOG BONE

Item Size 3.50"L x 1.12"W  
Imprint Size 2.50"L x 0.50"W

### 5246 SODA CAN

Item Size 3.50"L x 1.17"W  
Imprint Size 2.50"L x 0.90"W

### 5249 SLIM WATER BOTTLE

Item Size 4.57"L x 1.08"W  
Imprint Size 3.75"L x 1.06"W

Imprint Method Digital Print  
Packaging Bulk  
Shipping Weight 1.0 lbs. per 100 units

#### One Color Imprint

750	1500	3000	5000
\$0.42	\$0.40	\$0.38	\$0.36

#### Two or More Color Imprint

750	1500	3000	5000
\$0.54	\$0.52	\$0.50	\$0.48

### 5207 GAVEL

Item Size 4.63"L x 2.59"W  
Imprint Size 0.50"L x 2.25"H (Gavel Head)  
2.63"L x 0.75"H (File Length)

### 5240 OVAL

Item Size 4.00"L x 2.00"W  
Imprint Size 3.60"L x 1.60"H

### 5244 BUSINESS CARD

Item Size 3.50"L x 2.00"W  
Imprint Size 3.25"L x 1.75"H

Imprint Method Digital Print  
Packaging Bulk  
Shipping Weight 1.0 lbs. per 100 units

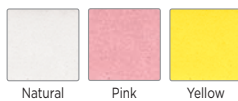
#### One Color Imprint

750	1500	3000	5000
\$0.46	\$0.44	\$0.42	\$0.40

#### Two or More Color Imprint

750	1500	3000	5000
\$0.58	\$0.56	\$0.54	\$0.52

#### PAPER COLOR OPTIONS



Natural

Pink

Yellow



5108



5204



5237



5246



5249



5247



5248



5207



5240



5244

All Samples Shown with Full-Color Decoration



FULL-COLOR  
DECORATION



ASSEMBLED  
IN USA

# Cause Marketing



Shown with One-Color Decoration



Shown with One-Color Decoration

[www.nationalbreastcancer.org](http://www.nationalbreastcancer.org)  
October is Breast Cancer Awareness Month



[www.dare.com](http://www.dare.com)  
September is National Alcohol and Drug Addiction Month



[www.ovariancancerawareness.org](http://www.ovariancancerawareness.org)  
September is Ovarian Cancer Awareness Month



[www.childwelfare.gov/preventing/preventionmonth](http://www.childwelfare.gov/preventing/preventionmonth)  
April is Child Abuse Awareness Month



[dvam.vawnet.org](http://dvam.vawnet.org)  
October is Domestic Violence Awareness Month



[www.earthday.org](http://www.earthday.org)  
April is Earth Day Month



[www.nmam.org](http://www.nmam.org)  
May is National Military Awareness Month



[www.autism-society.org](http://www.autism-society.org)  
April is Autism Awareness Month



## 5205 RIBBON EMERY BOARD

Item Size 4.50"L x 0.94"W  
Imprint Size 2.50"L x 0.38"H-File  
Imprint Method Digital Print

Packaging Bulk  
Shipping Weight 1.0 lbs. per 100 units

One Color Imprint			
750	1500	3000	5000
\$0.30	\$0.28	\$0.26	\$0.24

Two or More Color Imprint			
750	1500	3000	5000
\$0.34	\$0.32	\$0.30	\$0.28

## EMERY BOARDS

- No die charge for these specialty shapes
  - European emery paper laminated to wood veneer
  - Imprint options range from one-color to full-color photograph\*
- \*Two or more imprint colors for one setup charge

### 5201 HORIZONTAL ROUND

Item Size 4.44"L x 1.25"W  
Imprint Size 0.75"L x 0.75"H-Round  
2.75"L x 0.38"H-File

### 5202 HORIZONTAL HEART

Item Size 4.44"L x 1.25"W  
Imprint Size 0.50"L x 0.50"H-Heart  
2.75"L x 0.38"H-File

### 5203 HORIZONTAL HOUSE

Item Size 4.50"L x 1.25"W  
Imprint Size 0.75"L x 0.75"H-House  
2.75"L x 0.38"H-File

### 5206 HORIZONTAL AMBULANCE

Item Size 4.31"L x 0.88"W  
Imprint Size 0.75"L x 0.18"H-Ambulance  
2.25"L x 0.38"H-File

### 5238 HORIZONTAL CAR

Item Size 4.60"L x 1.03"W  
Imprint Size 1.50"L x 0.50"H-Car  
1.75"L x 0.38"H-File

### 5239 HORIZONTAL SQUARE

Item Size 4.57"L x 1.00"W  
Imprint Size 0.70"L x 0.70"H-Square  
3.25"L x 0.38"H-File

### 5241 HORIZONTAL PLUS-SIGN

Item Size 4.54"L x 1.11"W  
Imprint Size 0.70"L x 0.38"H-Plus  
4.00"L x 0.38"H-File

### 5242 HORIZONTAL FLOWER

Item Size 4.58"L x 1.31"W  
Imprint Size 0.75"Dia.-Flower  
2.88"L x 0.38"H-File

### 5243 HORIZONTAL SHIELD

Item Size 4.55"L x 1.37"W  
Imprint Size 0.75"L x 0.75"H-Shield  
3.00"L x 0.38"H-File

### 5245 HORIZONTAL TOOTH

Item Size 4.50"L x 0.94"W  
Imprint Size 2.50"L x 0.38"H-File

Imprint Method Digital Print  
Packaging Bulk  
Shipping Weight 1.0 lbs. per 100 units

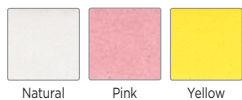
#### One Color Imprint

750	1500	3000	5000	(4A)
\$0.30	\$0.28	\$0.26	\$0.24	

#### Two or More Color Imprint

750	1500	3000	5000	(4A)
\$0.34	\$0.32	\$0.30	\$0.28	

#### PAPER COLOR OPTIONS



Natural

Pink

Yellow

5201



Full Service Environmental Consulting and Contracting

Shown with Full-Color Decoration

5202



Ruby Heart

Shown with One-Color Decoration

5203



BRINKS

Shown with One-Color Decoration

5206



MISSION AMBULANCE

Shown with Full-Color Decoration

5238



MAZDA

Shown with Full-Color Decoration

5239



Yellow Book USA™ www.yellowbook.com

Shown with One-Color Decoration

5241



Nightingale Watch your career take flight!  
866-681-4357

Shown with One-Color Decoration

5242



FlowersFoods  
BAKERIES GROUP

Shown with One-Color Decoration

5243



that MUCH MORE

Shown with Full-Color Decoration

5245



DELTA DENTAL

Shown with Full-Color Decoration



FULL-COLOR  
DECORATION



ASSEMBLED  
IN USA



All Samples Shown with Full-Color Decoration

### 5109 MINI BUMPER STICKER SHAPE EMERY BOARD

- No die charge for these specialty shapes
- \*Two or more imprint colors for one setup charge

Item Size	4.60"L x 1.25"W
Imprint Size	4.40"L x 1.12"H
Imprint Method	Digital Print
Packaging	Bulk
Shipping Weight	1.0 lbs. per 100 units

<b>One Color Imprint</b>				
750	1500	3000	5000	(4A)
<b>\$0.42</b>	<b>\$0.40</b>	<b>\$0.38</b>	<b>\$0.36</b>	
<b>Two or More Color Imprint</b>				
750	1500	3000	5000	(4A)
<b>\$0.46</b>	<b>\$0.44</b>	<b>\$0.42</b>	<b>\$0.40</b>	



All Samples Shown with Full-Color Decoration

### 5236 SEASONAL EMERY BOARDS

- Candy Cane
- Ornament
- Easter Egg

Size	Assorted Sizes
Imprint Location	Front
Imprint Size	Assorted Sizes
Imprint Method	Digital Print
Packaging	Bulk
Shipping Weight	1.0 lbs. per 100 units

<b>Two or More Color Imprint</b>				
750	1500	3000	5000	(4A)
<b>\$0.50</b>	<b>\$0.48</b>	<b>\$0.46</b>	<b>\$0.44</b>	



Style-514120



Style-514108



Style-514107



Style-514117

All 5141 shown with Full-Color Decoration



### 5141 POLITICAL EMERY BOARD

Item Size	4.63"L x 0.50"W
Imprint Size	Assorted Sizes
Imprint Method	Digital Print

Packaging	Bulk
Shipping Weight	1.0 lbs. per 100 units

<b>Two or More Color Imprint</b>				
750	1500	3000	5000	(4A)
<b>\$0.28</b>	<b>\$0.26</b>	<b>\$0.24</b>	<b>\$0.22</b>	

#### PAPER COLOR OPTIONS



### 5814 MINI SALON BOARD

- Each side is a different grit
- Foam insert

Size	3.25"L x 0.75"W x 0.13"D
Imprint Location	Front Side
Imprint Size	2.75"L x 0.50"H
Imprint Method	Pad Print / Digital Print
Packaging	Bulk
Shipping Weight	1.0 lbs. per 100 units

<b>One Color Imprint</b>			
200	500	1500	2500
<b>\$0.98</b>	<b>\$0.94</b>	<b>\$0.88</b>	<b>\$0.84</b>

<b>Two or More Color Imprint</b>			
200	500	1500	2500
<b>\$1.08</b>	<b>\$1.06</b>	<b>\$1.04</b>	<b>\$1.02</b>

### 5268 MINI SALON BOARD WITH CASE

Frosted carrying case

Packaging	Bulk
Shipping Weight	4.0 lbs. per 100 units

<b>Two or More Color Imprint</b>			
200	500	1500	2500
<b>\$2.02</b>	<b>\$1.98</b>	<b>\$1.94</b>	<b>\$1.90</b>

### 5262 SALON BOARD

- Each side is a different grit
- Foam insert

Size	6.50"L x 0.75"W x 0.13"D
Imprint Location	Front Side
Imprint Size	4.50"L x 0.50"H
Imprint Method	Pad Print / Digital Print
Packaging	Bulk
Shipping Weight	1.5 lbs. per 100 units

<b>One Color Imprint</b>			
200	500	1500	2500
<b>\$1.04</b>	<b>\$1.02</b>	<b>\$1.00</b>	<b>\$0.98</b>

<b>Two or More Color Imprint</b>			
200	500	1500	2500
<b>\$1.42</b>	<b>\$1.38</b>	<b>\$1.34</b>	<b>\$1.30</b>

### 5272 SALON BOARD WITH CASE

Frosted carrying case

Packaging	Bulk
Shipping Weight	6.0 lbs. per 100 units

<b>Two or More Color Imprint</b>			
200	500	1500	2500
<b>\$2.88</b>	<b>\$2.68</b>	<b>\$2.64</b>	<b>\$2.60</b>



One-Color Imprint



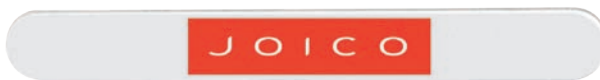
Full-Color Imprint



One-Color Imprint



Full-Color Imprint



One-Color Imprint



One-Color Imprint



**NEW**

**5273 TWIST NAIL FILE**

- Four surfaces: file, buff, smooth and shine
- Twist handle design



Ergonomic handle



Size	6.00"L x 0.97" W		
Imprint Location	White file		
Imprint Size	2.00"L x 0.45"H		
Imprint Method	Pad Print		
Packaging	Bulk		
Shipping Weight	3 lbs. per 100 Units		

200	500	1500	2500	(4A)
<b>\$1.70</b>	<b>\$1.68</b>	<b>\$1.66</b>	<b>\$1.64</b>	

**5271 WASHABLE SALON BOARD**

- Plastic core file with high quality grit



Full Color - Front

Size	7.00"L x 1.13"W x 0.09"D		
Imprint Location	Front Side		
Imprint Size	6.75"L x 1.00"H		
Imprint Method	Digital Print		
Packaging	Bulk		
Shipping Weight	2.6 lbs. per 100 units		

<b>One Color Imprint</b>				
200	500	1500	2500	(4A)
<b>\$1.52</b>	<b>\$1.48</b>	<b>\$1.42</b>	<b>\$1.38</b>	

<b>Two or More Color Imprint</b>				
200	500	1500	2500	(4A)
<b>\$1.62</b>	<b>\$1.58</b>	<b>\$1.52</b>	<b>\$1.48</b>	



**5833 3-IN-1 NAIL BLOCK**

- Easy grip size
- Professional quality foam center
- Evens, smooths and shines



Size	3.50"L x 1.60"W x 0.56"D		
Imprint Location	Front Side		
Imprint Size	2.50"L x 1.00"H		
Imprint Method	Screen Print		
Packaging	Bulk		
Shipping Weight	1.0 lbs. per 100 Units		

200	500	1500	2500	(4A)
<b>\$1.28</b>	<b>\$1.24</b>	<b>\$1.20</b>	<b>\$1.16</b>	



### 5835 FOOT FILE

- Long handle for easy grip
- Three different files
- Files away dead skin and callouses
- File pulls out of handle

Size	8.50"L x 1.15" W (handle) 3.14"W (circular file)		
Imprint Location	Front handle		
Imprint Size	1.45"L x 0.70"H		
Imprint Method	Pad Print		
Packaging	Bulk		
Shipping Weight	3 lbs. per 100 Units		

100	250	500	1000	(4A)
<b>\$3.76</b>	<b>\$3.74</b>	<b>\$3.72</b>	<b>\$3.70</b>	

**NEW**



### 5910 MATCHBOOK EMERY BOARD PACK

- High quality grit on both sides
- Full color imprint on front and back cover and full color on one side of files
- Easily fits in pocket or purse

Size	2.25"L x 2.75"W x 0.25"D		
Imprint Location	Full Cover/Front Side		
Imprint Size	File Length 2.00"L x 2.13"H Cover 5.88"L x 2.25"H		
Imprint Method	Digital Print		
Packaging	Poly Bag		
Shipping Weight	1.8 lbs. per 100 units		

100	250	500	1000	(4A)
<b>\$4.16</b>	<b>\$4.08</b>	<b>\$4.00</b>	<b>\$3.12</b>	



### 5680 PEDICURE PACK

- Includes foot-shaped file board, nail scrubber, foam emery board and toe separators
- Clear pouch

Imprint Location	Pouch Front		
Imprint Size	3.63"L x 4.00"H		
Imprint Method	Screen Print		
Packaging	Bulk		
Packaging Size	6.25"L x 4.63"W x 0.50"D		
Shipping Weight	10.0 lbs. per 100 units		

100	250	500	1000	(4A)
<b>\$4.84</b>	<b>\$4.76</b>	<b>\$4.68</b>	<b>\$4.62</b>	





Silver

### 5001 REGULAR NAIL CLIPPERS

- Includes file with curved tip
- Chrome-plated metal

Size	2.13"L x 0.50"W x 0.50"D		
Imprint Location	Handle Top		
Imprint Size	0.75"L x 0.19"H		
Imprint Method	Laser Engrave		
Packaging	Poly Bag		
Shipping Weight	3.5 lbs. per 100 units		

200	500	1500	2500	(4A)
<b>\$1.04</b>	<b>\$1.02</b>	<b>\$1.00</b>	<b>\$0.98</b>	



Silver

### 5031 LARGE NAIL CLIPPERS

- Contoured handle for easy grip
- Includes diamond cut file with curved tip
- Chrome-plated metal

Size	3.21"L x 0.59"W		
Imprint Location	Handle Top		
Imprint Size	1.50"L x 0.19"H		
Imprint Method	Laser		
Packaging	Poly Bag		
Shipping Weight	1.0 lbs. per 100 units		

200	500	1500	2500	(4A)
<b>\$1.96</b>	<b>\$1.88</b>	<b>\$1.84</b>	<b>\$1.80</b>	



Pink



Green

### 5033 COMFORT CLIPPERS

- Easy grip
- Includes file inside handle
- Chrome plated metal

Size	2.68"L x 0.74"W		
Imprint Location	Handle Top		
Imprint Size	1.50"L x 0.25"H		
Imprint Method	Screen Print		
Packaging	Poly Bag		
Shipping Weight	6.5 lbs. per 100 units		

200	500	1500	2500	(4A)
<b>\$1.56</b>	<b>\$1.52</b>	<b>\$1.48</b>	<b>\$1.44</b>	



Blue - Back

Front



Pink - Back

Front



### 5023 BABY NAIL CLIPPERS

- Chrome-plated metal
- Protective vinyl pouch

Size	2.13"L x 0.50"W x 0.50"D		
Imprint Location	Cover Back		
Imprint Size	1.75"L x 0.50"H		
Imprint Method	Pad Print		
Packaging	Bulk		
Packaging Size	2.75"L x 1.50"W x 0.75"D		
Shipping Weight	3.5 lbs. per 100 units		

200	500	1500	2500	(4A)
<b>\$2.16</b>	<b>\$2.04</b>	<b>\$2.00</b>	<b>\$1.96</b>	

### 5007 MAVERICK MULTI-TOOL KEY TAG

- Includes five tools: nail clippers, knife, bottle opener, slotted screwdriver and file
- Chrome-plated tool

Size	2.38"L x 1.13"W x 0.50"D		
Imprint Location	Cover Front		
Imprint Size	1.13"L x 0.65"H		
Imprint Method	Pad Print		
Packaging	Poly Bag		
Shipping Weight	8.0 lbs. per 100 units		

200	500	1500	2500	(4A)
<b>\$3.10</b>	<b>\$3.00</b>	<b>\$2.96</b>	<b>\$2.92</b>	



White



Black



Blue



Red

### 5006 NAIL CLIPPER/ BOTTLE OPENER

- Chrome-plated metal
- Mini file on inside

Size	2.63"L x 1.44"W x 0.57"D		
Imprint Location	Handle Top		
Imprint Size	0.80" Dia.		
Imprint Method	Laser Engrave		
Packaging	Poly Bag		
Shipping Weight	8.0 lbs. per 100 units		

200	500	1500	2500	(4A)
<b>\$3.16</b>	<b>\$3.12</b>	<b>\$3.08</b>	<b>\$3.04</b>	



Silver - Front



Bottle Opener/Mini File

### 5809 FOLDING MANICURE SET

- Includes six tools: clippers, tweezers, nail file, scissors, cuticle pusher and cuticle trimmer
- Embossed leatherette case with snap closure
- Stainless steel tools

Size	2.50"L x 4.50"W x 0.75"D		
Imprint Location	Case Front		
Imprint Size	2.00"L x 1.63"H		
Imprint Method	Pad Print		
Packaging	Poly Bag		
Shipping Weight	14.5 lbs. per 100 units		

100	250	500	1000	(4A)
<b>\$5.30</b>	<b>\$5.10</b>	<b>\$4.96</b>	<b>\$4.92</b>	



Black



Pink



Open



Front



Back - Mirror



ECO-FRIENDLY

### 5826 BAMBOO MIRROR

- Glass mirror
- Compact-style

Size	3.00"L x 0.31"W			
Imprint Location	Back			
Imprint Size	2.50" Dia.			
Imprint Method	Screen Print			
Packaging	Poly Bag			
Shipping Weight	6.0 lbs. per 100 units			

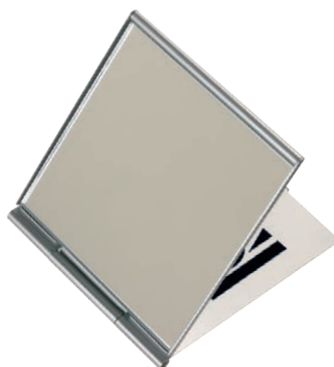
200	500	1500	2500	(4A)
<b>\$3.02</b>	<b>\$2.82</b>	<b>\$2.76</b>	<b>\$2.70</b>	

### 5296 METAL FOLD-UP MIRROR

- Hinged aluminum case - also acts as an easel when open
- Compact-style



Silver



Size	3.13"L x 2.75"W x 0.13"D			
Imprint Location	Case Top			
Imprint Size	2.00"L x 2.00"H			
Imprint Method	Screen Print			
Packaging	Poly Bag			
Shipping Weight	8.5 lbs. per 100 units			

100	250	500	1000	(4A)
<b>\$4.22</b>	<b>\$4.02</b>	<b>\$3.82</b>	<b>\$3.68</b>	

### 5832 DUO MIRROR

- Embossed leatherette case with snap closures
- Square mirror and 1X round mirror



Pink



Size	3.63"L x 3.38"W			
Imprint Location	Case Front			
Imprint Size	1.00"L x 1.50"H			
Imprint Method	Pad Print			
Packaging	Poly Bag			
Shipping Weight	16.0 lbs. per 100 units			

50	100	150	250	(4A)
<b>\$6.20</b>	<b>\$6.16</b>	<b>\$6.10</b>	<b>\$6.00</b>	



ALEXANDER EXCLUSIVE

**5297 SLIDE-HANDLE MIRROR**

- Mirror slides out of pivoting handle – provides full-sized comfort in a compact shape
- 1X and 2X magnification

Size	3.88" Dia. x 0.38"D		
Imprint Location	Handle		
Imprint Size	3.00"L x 0.63"H		
Imprint Method	Screen Print		
Packaging	Poly Bag		
Shipping Weight	9.5 lbs. per 100 units		

200	500	1500	2500	(4A)
<b>\$2.90</b>	<b>\$2.70</b>	<b>\$2.62</b>	<b>\$2.52</b>	



Silver

Handle slides in for storage



**5825 ARCH MIRROR**

- Protective flip-top case
- Glass mirror
- Frosted plastic case

Size	3.13"L x 2.69"W x 0.25"D		
Imprint Location	Case Top		
Imprint Size	1.75" Dia.		
Imprint Method	Screen Print		
Packaging	Poly Bag		
Shipping Weight	7.5 lbs. per 100 units		

200	500	1500	2500	(4A)
<b>\$2.10</b>	<b>\$1.92</b>	<b>\$1.68</b>	<b>\$1.64</b>	



Clear

Open



**5824 ROUND MIRROR**

- Compact-size
- Plastic case

\*Full-color imprint on white only

Size	2.75"L x 2.50"W x 0.25"D		
Imprint Location	Case Top		
Imprint Size	2.00" Dia.		
Imprint Method	Screen Print		
	Digital Print		
Packaging	Poly Bag		
Shipping Weight	5.0 lbs. per 100 units		

<b>One Color Imprint</b>				
200	500	1500	2500	(4A)
<b>\$1.82</b>	<b>\$1.74</b>	<b>\$1.62</b>	<b>\$1.56</b>	

<b>Two or More Color Imprint - White Only</b>				
200	500	1500	2500	(4A)
<b>\$2.24</b>	<b>\$2.16</b>	<b>\$2.08</b>	<b>\$2.00</b>	



Yellow

Green

Blue

White

Red



FULL-COLOR DECORATION



FULL-COLOR  
DECORATION

### 5419 SANITIZER POCKET SPRAYER

- Spray mist applicator
- Five cap color options
- Cap with pocket clip

Size	4.88"L x 1.00"W		
Imprint Location	Label		
Imprint Size	2.50"L x 0.92"H		
Imprint Method	Digital Print		
Packaging	Poly Bag		
Shipping Weight	4.0 lbs. per 100 units		

	200	500	1500	2500	(4A)
	\$1.50	\$1.46	\$1.42	\$1.38	



FULL-COLOR  
DECORATION



MADE  
IN USA

2-OZ

### 5402 2-OZ HAND SANITIZER GEL

- 62% alcohol content
- Contains moisturizing ingredients

	200	500	1500	2500	(4A)
	\$2.22	\$2.20	\$2.18	\$2.16	

Size	3.60"L x 1.60"W	
Imprint Location	Label*	
Imprint Size	1.50"L x 1.20"H	
Imprint Method	Digital Print	
Packaging	Bulk	
Shipping Weight	15.0 lbs. per 100 units	

\* Available with white or clear label



#### FLAVOR OPTIONS:

Cherry, Citrus, Chocolate, Grapefruit, Lime, Mint, Passion Fruit, Peppermint, Pina Colada, Pomegranate, Spearmint, Tangerine, Unflavored, Vanilla

#### CAP and TUBE COLOR OPTIONS:



FULL-COLOR  
DECORATION



MADE  
IN USA



Frost White

### 5522 LIP BALM

- SPF 15
- White cap and tube for natural lip balm
- Frost cap and tube for tinted lip balm

Size	2.63"L x 0.63"W		
Imprint Location	Label		
Imprint Size	2.00"L x 2.13"H		
Imprint Method	Digital Print		
Packaging	Bulk		
Shipping Weight	2.5 lbs. per 100 units		

	250	500	1500	2500	(4A)
	\$1.54	\$1.50	\$1.46	\$1.42	

### 5914 TISSUE PACK

- Includes 8 soft two-ply tissues
- In protective plastic pouch

Size	4.88"L x 3.25"W x 0.38"D		
Imprint Location	Pouch Front		
Imprint Size	3.00"L x 2.25"H		
Imprint Method	Digital Print		
Packaging	Bulk		
Shipping Weight	2.0 lbs. per 100 units		

	200	500	1500	2500	
	\$2.20	\$2.12	\$2.04	\$1.96	(4A)



White



### 5921 ECO LINT REMOVER PACK

- Pad with 25 peel-off sheets
- Paper cover

Size	3.75"L x 3.75"W		
Imprint Location	Full Cover		
Imprint Size	3.00"L x 3.00"H		
Imprint Method	Digital Print		
Packaging	Poly Bag		
Shipping Weight	8.0 lbs. per 100 Units		

	200	500	1500	2500	
	\$1.92	\$1.88	\$1.84	\$1.80	(4A)



ECO-FRIENDLY



FULL-COLOR DECORATION

### 5682 HOT/COLD PACK

- Ready to use, nothing to break inside
- Store in freezer or heat in microwave
- Clear pouch
- imprint on pouch only

Size	6.63"L x 4.13"W x 0.50"D		
Imprint Location	Pouch Front		
Imprint Size	5.50"L x 2.50"H		
Imprint Method	Screen Print		
Packaging	Bulk		
Packaging Size	7.50"L x 4.25"W x 0.75"D		
Shipping Weight	37.5 lbs. per 100 units		

	100	250	500	1000	
	\$4.48	\$4.44	\$4.40	\$4.36	(4A)



Blue

## GENERAL ORDER INFORMATION

**PRODUCTION TIME:** 2-5 working days.

**OVER/UNDER RUNS:** We reserve the right to ship and bill for five percent over or under ordered quantity.

**NO IMPRINT ORDERS:** Use next column pricing.

**PAYMENT TERMS:** Net 30 days upon credit approval

**PRODUCT GUARANTEE:** Alexander warrants all products to be of the highest quality and will replace any defective products without charge. Liability limited to amount of invoice.

**REPEAT ORDERS:** No set up charge for orders that are less than two years old.

When reordering, specify previous purchase order number on current purchase order.

**CANCELLATION:** Customer is responsible for all costs incurred prior to time of cancellation.

**SHIPPING:** Most orders will be shipping from ZIP code 61776. The most economical carrier will be selected unless otherwise specified.

**FREIGHT CLAIMS:** Recourse with carrier is the responsibility of the customer. Title to merchandise passes to consignee on carrier pickup.

**PPAI Code of Conduct:** We have signed and adopted PPAI Code of Conduct.

## STANDARD INK COLORS

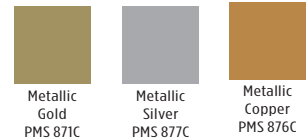
Alexander promotional products are available with 22 different imprint ink colors at no additional charge. If a color other than described below is needed, be certain to specify the PMS coated color number or name.

There is a \$25.00 (G) charge for a requested color that is not on the list shown here.

### STANDARD SOLID COLORS



### STANDARD METALLIC COLORS



NOTE: The three "metallic" colors listed are not representative of their true metallic color because of printing limitations.

NOTE: Because of printing limitations and product color, PMS coated colors will be reproduced as close to the actual color as possible.



## SAMPLE CHARGES

**RANDOM SAMPLE:** Free sample with shipper number provided.

**SPEC SAMPLE:** 25% off EQP with \$45(G) setup charge, per color/location decorated with customer-specified artwork.

**SELF-PROMOTION:** 25% off EQP with \$22.50(G) setup charge, per color/location decorated with customer-specified artwork.

## SERVICE CHARGES

**SETUP:** \$45(G) per imprint color/location, applied to all orders except exact repeats within two years.

**LESS THAN MINIMUM:** \$45(G) applied to orders that are less than first-column quantity. Absolute minimum is half of first column. Emery boards are not available at less than minimum quantities.

**ADDITIONAL COLOR AND/OR LOCATION:** \$.30(G) per color or location per item.

**LASER OXIDATION:** \$.75(G) per item to oxidize metal.

**CUSTOM INK:** \$25(G) for a PMS coated color match not included in our standard ink colors.

**PAPER PROOF:** \$12(G) paper or e-mail proofs requiring approval prior to production.

**PRODUCT PROOF:** \$45(G) sample of product printed requiring approval prior to production.

**POLY BAG:** \$.075(G) per item on items where a poly bag is not standard.

**LABELS:** \$.05(G) per item to attach customer supplied labels.

**MULTIPLE ITEM POLY BAG:** Call for quote.

**INSERTION:** \$.32(G) per item to combine a non-Alexander item(s) with an Alexander item(s).

**DROP SHIP:** \$7.50(G) applied to each "ship to" after the first "ship to" address.

**HANDLING:** \$4 net per carton for handling costs of packaging and preparing.

**INTERNATIONAL SHIPMENTS:** All duty and tax charges are the responsibility of the Alexander customer. All declaration documentation will include the retail value of goods, unless otherwise instructed by customer.

**PERSONALIZATION:** \$1.00(A) unless otherwise stated.

## E-MAIL CONTACTS

**ORDERS:** [orders@alexandermc.com](mailto:orders@alexandermc.com)

**RANDOM SAMPLE ORDERS:** [samples@alexandermc.com](mailto:samples@alexandermc.com)

**ARTWORK:** [art@alexandermc.com](mailto:art@alexandermc.com)

**VIRTUALS:** [virtuals@alexandermc.com](mailto:virtuals@alexandermc.com)

**GENERAL SERVICE INQUIRIES:** [service@alexandermc.com](mailto:service@alexandermc.com)

**ACCOUNTING SERVICES:** [accounting@alexandermc.com](mailto:accounting@alexandermc.com)

# What we can do for you...

## CUSTOMWORKS

### Tell us what you know.

- Who is your customer?
- Who will receive the products?
- What quantities?

### We do all the work.

- We research your target audience and the current trends.
- We introduce a story.
- We come up with a collection of ideas.

- Cinco-De-Mayo Event
- Unique and fun ideas
- What is going on at the bar?
- What will engage the consumer?
- What will they use in the bar?

### You take to your customer.

A well designed and compelling presentation for a broad range of markets and industries.

#### Beverage



#### Health Care



#### Cause / Events Marketing



#### Food / Restaurant



# Business Building Ideas

## Marketing Solutions from *Alexander*

- Carefully select products that enhances your customer's brand
- Bring it to life using customer's branding elements with fun graphics
- Tailored with your message and contact information



## Custom Presentations



# Put your brand in plain sight with our magnetic products.



## Alexander



34040



ALEX0004



113670



55970

©2014 Alexander Manufacturing Company