

Deliver your message with a 'wow' factor for maximum impact!



- Promotional Giveaways
- Sporting Events
- Tradeshaw Premiums
- Travel & Tourism
- New Product Launches
- Brand Awareness
- Locator & Campus Maps
- Direct Mail

PLUS over 100 U.S. & International city maps



131 students and their faculty mentors presented research and academic work at the most recent annual Scholars Day.

9:1 mentors to faculty

96% of lower BVU programs have explored at least one world.

\$140,000+ provided to students by BVU for travel experiences

After working at a chain of convenience and saving stores as a result of a lack of clean drinking water, **Kimberly Perez** investigated research that explored methods to purify polluted water with algae and see the water ripple to produce bio-diesel fuel.

Xochitl de Anda investigated undocumented women in the Stony Lake community and analyzed the struggle they face using feminist and psychological theories.

Digital media students produced and directed the "Star Trekline Concert" at BVU and have helped to produce the BVU musical production of the musical "The Book of Mormon" which is touring in New York City.

Hannah Puderbaugh will receive the German Scholarship Award for her research on the German economy.

80% of students register at least one internship at BVU.

Recent Internships:

- United Way, Nashville, TN
- United Way, Nashville, TN
- United Way, Nashville, TN
- United Way, Nashville, TN
- United Way, Nashville, TN

Three out of four students are involved in at least one of BVU's more than 41 student organizations.

11 of our students are involved in at least one of our 11 student organizations.

FINANCIAL AID

81% of BVU students who graduated with area first-year majors in 2013 received \$1000 or more in financial aid.

STUDENT A: \$1,500 (Scholarship) + \$1,500 (Grant) = \$3,000

STUDENT B: \$1,500 (Scholarship) + \$1,500 (Grant) + \$1,500 (Loan) = \$4,500

STUDENT C: \$1,500 (Scholarship) + \$1,500 (Grant) + \$1,500 (Loan) + \$1,500 (Loan) = \$6,000

\$13 million in scholarships and grants awarded to students by BVU.

Want to see the costs for yourself? Test drive our easy-to-use Scholarship & Net Price Calculator at bvuv.edu/calculator

COME SEE US

At BVU, personal attention begins with a campus visit. It's more than just a fact. It's a reality based on your most personal questions about college and the BVU experience.

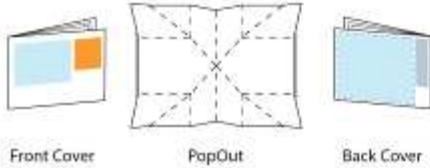
1 of BVU students are student-athletes, balancing sport and books alongside expert coaches and faculty.

3 of BVU students are student-athletes, balancing sport and books alongside expert coaches and faculty.

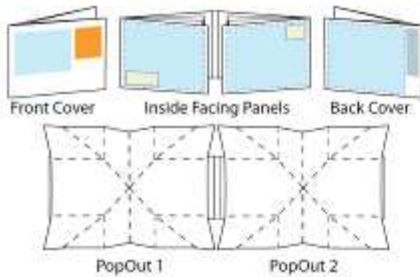
Go to bvuv.edu/visitbvu to schedule your visit!

Create unique dimensional possibilities with pocket-size marketing tools featuring a patented, self-folding design.

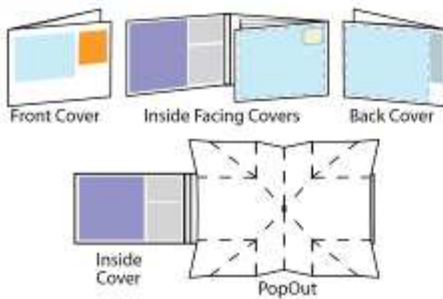
CP1 - Single Popout



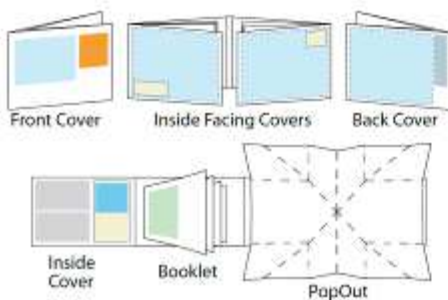
CP2 - Double Popout



CP3 - Single Popout with Gatefold



CP4 - Single Popout with Booklet (8-32 pgs)



- Cover closes to pocket-size 5 1/8" x 3 3/4"
- PopOut(s) open to 8 3/8" x 9 3/4"
- Various sizes, options & finishes available
- All components are fully customizable to reflect your brand and message
- Use any of our beautifully designed city maps or create your own PopOut

	2,500	3,000	5,000	10,000	15,000	20,000	
CP1 Single Popout	3.27	2.97	2.08	1.43	1.28	1.14	Set up CP1-2-3 \$300/v; CP4 \$450/v
CP2 Double Popout	3.99	3.59	2.54	1.82	1.65	1.53	Art/Design \$80/hr v (if required)
CP3 Single Popout w/gatefold	3.87	3.37	2.42	1.74	1.57	1.41	Lead time 6 weeks
CP4 Single Popout w/booklet (8 pgs)	5.25	4.72	3.40	2.47	2.18	1.90	Price FOB CA
							Terms 50% deposit/advance net 30

New Option - Digitally Printed 1000 Custom Single PopOuts - \$4.97/r Set-up: \$125/v

Ideal premium for tradeshows, conventions, events & mailings

- 2 PopOut city maps (downtown & greater area)
- 3 panel maps (tourist areas & transportation systems)
- Durable, convenient pocket-size 5½" x 3¾"
- PopOut maps open to 8⅝" x 9¾"
- Same patented* PopOut Maps sold at retail
- Company branded with your logo or message

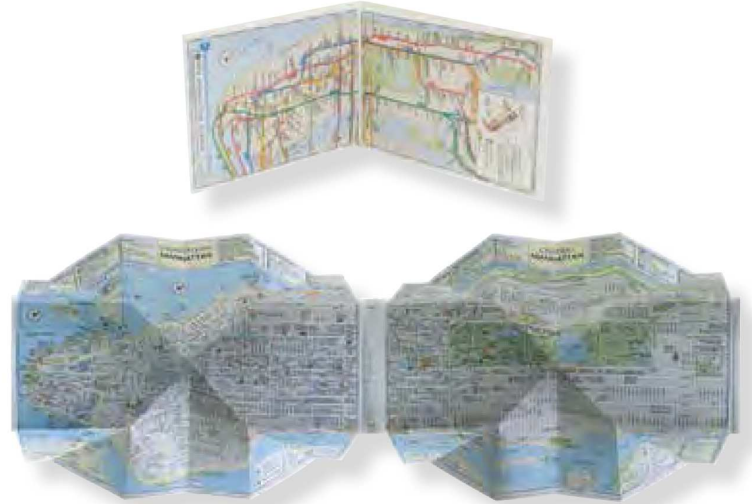


Stock Double PopOut Map - Company Branded



Over 100
U.S. &
International
cities in
stock

Call for stock availability



insideout®



Stock InsideOut - Company Branded

Available Cities

- | | |
|-------------|---------------|
| Boston | Paris |
| Chicago | Rome |
| London | San Francisco |
| Los Angeles | Sydney |
| Madrid | Venice |
| Orlando | Washington DC |
| New York | |

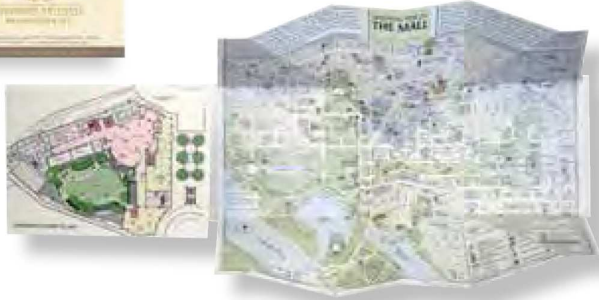


- Full color 64-page travel guide
- 70+ color photos
- 2 PopOut maps with index and points of interest
- Transportation and key area maps
- Pocket-size 5¼" x 4"

	50	100	250	500	1,000	1,500	Lead time	Stock ships in 2-3 days
PopOut Stock	5.99	5.49	4.66	4.52	4.30	3.99	Branded	3 weeks
PopOut Company Branded	n/a	n/a	4.99	4.85	4.63	4.32	Branding Options	
InsideOut Stock	8.20	7.90	7.60	7.30	7.00	6.70	PopOut	1-C imprint or 4-C label
InsideOut Company Branded	n/a	n/a	9.34	8.28	7.62	7.32	InsideOut	4-C label
							Set up	\$85/x
							Terms	Prepay

*Patents pending & granted in over 30 countries

What's your message?



hotel locator

product launch



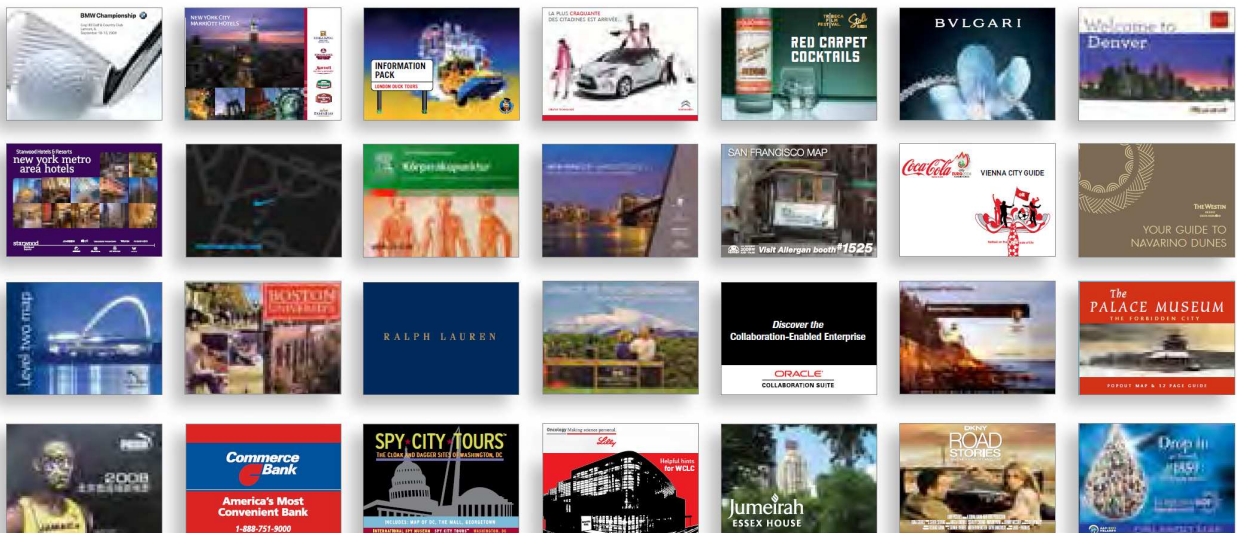
event guide



travel & tourism



The options are endless...



Travel/Tourism Retail Hotels/Resorts Financial Pharmaceutical
Heathcare Sports/Events Transportation Food/Beverage Education

www.popoutproducts.com