

BEARDMORE

BETTER LEATHERS SINCE 1844

2008



SPECIALISTS IN LEATHER & CORPORATE BRANDING

ASI/39275 PPAI/256665 PPACanada/20050908 UPIC/BEARD125 SAGE/67631

THE STORY OF BEARDMORE

The history of my family and that of Beardmore have been closely intertwined with the leather industry for over 200 years. The common bond has always been the allure and attraction of quality leather goods. Both sides of my family - the Dawkins and Heller families - have been active in the leather industry during that period. Leather has been an international commodity for most of this time which has allowed us to build up true expertise in product, contacts and sourcing. I am proud to share some of this long history with you. It is the foundation of the knowledge-based enthusiasm and innovation we focus on today.

Jane Dawkins
President
Beardmore Leathers
Better Leathers since 1844


- 
- **1799** The first Dawkins ancestors settle in Dundas, ON Canada and start producing leather.
 - **1818** George L. Beardmore born in England.
 - **1843** The Heller family opens a leather factory in Europe (now within the Czech Republic).
 - **1844** G. L. Beardmore opens the first Beardmore Leather operation in Hamilton, ON Canada.
 - **1865** Beardmore moves to Acton, ON Canada - later to be known as Canada's "Leather Town".
 - **1876** Beardmore opens a second leather operation in Bracebridge (Muskoka), ON Canada.
 - **1882** The first known member of the Dawkins family joins Beardmore & Co. - Bracebridge, ON location.
 - **1900** Beardmore's Acton location reaches over 1 million square feet of floor space.
 - **1914** Beardmore is established as the largest tannery in the British Empire and is critical to the War effort - the Hellers are busy producing leather for Austria.
 - **1915** 25% interest in Beardmore (from the estate of one of four brothers) is sold for \$ 1.5 million.
 - **1931** The Heller family builds a modern leather factory on the banks of the Elbe River.
 - **1944** Beardmore's 100th anniversary.
 - **1945** Beardmore is acquired by Canada Packers (later Maple Leaf foods) - at least 10 members of the Dawkins family employed at Beardmore.
 - **1946** Heller business closes in the political turmoil of Eastern Europe.
 - **1949** Frank and Charles Heller join Beardmore & Co. In Acton, ON.
 - **1961** Frank Heller & Co. founded in Acton, ON.
 - **1967** Fred Dawkins & Karin Heller are married.
 - **1969** Frank Heller dies. Fred Dawkins and Ron Heller, (brothers-in-law) take over Frank Heller & Company.
 - **1980** Dawkins and Heller families open Canada's largest leather store.
 - **1986** Maple Leaf closes the Beardmore plant in Acton, ON.
 - **1987** Frank Heller & Co. produces a record 18 million square feet of leather.
 - **1989** Frank Heller and Co is sold.
 - **1998** Fred and Jane Dawkins acquire the Beardmore name and trademarks from Maple Leaf Foods and begin operation as a manufacturer/supplier for the Promotional & Premium Incentives Industry.

TABLE OF CONTENTS

Mission Statement:

Beardmore Leathers is dedicated to providing our clients with a distinctive edge in their reward and promotional programs. We are committed to use our history, expertise and product knowledge in the most energetic and creative ways to ensure unique, value based products that send a message of quality, innovation and distinction. There is no better medium than leather and it is our goal to ensure that there is no better leather source than Beardmore!

THINK LEATHER - THINK BEARDMORE

Men's, Women's & Kids Jackets

| | Page |
|-----------------------------|------|
| Goat Nappa Co-ordinates | 2 |
| Rugged Cowhide Collection | 4 |
| Luxury Deer Tan Leather | 8 |
| Supple Lamb & New Zealand's | 10 |

Theme Jackets

| | |
|------------------------------|----|
| Bikers | 14 |
| Aviators & Flight Jackets | 16 |
| Melton/ Leather Team Jackets | 18 |

Leather Accessories

| | |
|---------------------------------------|----|
| Forget Me Nots - Packaging that Lasts | |
| Duffels | 20 |
| Cardholders, Wallets & ID Cases | 22 |
| Portfolios & Business | 24 |
| Coasters & Barware | 26 |
| Leather Packaging | 28 |
| Leather Gloves | 30 |
| Home/Office Decor | 32 |
| Awareness Collection | 34 |
| Beardmore Decoration Services | 35 |
| Beardmore's Leather Glossary | 36 |
| The Impact of Colour | 37 |

NEW



EMMA

Women's leather jacket with zip front, shirt collar, slash pockets, and top-stitched seams. Features a feminine shape that fits most body types. Available in regular and tall sizes XS to 4XL .

Center back length: 66 cm (28")

Internal easy access zip for imprinting.

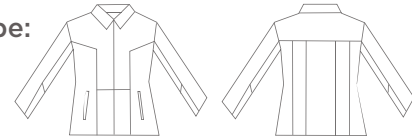
Leather: Goat Nappa

Recommended Imprint Locations:

Left Chest
Back Yoke

Recommended Imprint Type:

Stamped Deboss
3D Raised Emboss
Embroidery



Standard Production Time: 7 to 10 business days

JASON & GISELLE

Men's & Women's sleek leather jacket with zip front, shirt collar, slash pockets. Features 1 left chest inside pocket. Spring/Fall light-weight lining. Available in regular and tall sizes XS to 4XL .

Center back length: 66 cm (28")

Internal easy access zip for imprinting.

Leather: Goat Nappa

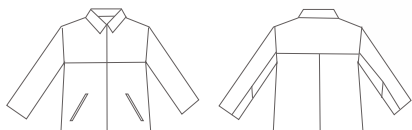
Recommended Imprint Locations:

Left Chest
Back Yoke
Cuff

Recommended Imprint Type:

Stamped Deboss
3D Raised Emboss
Embroidery

Standard Production Time:
7 to 10 business days



NEW

GISELLE

THINK LEATHER - THINK BEARDMORE



ERIC

Men's classic leather bomber with zip front, domed storm flap, shirt collar, adjustable domed cuffs, slash pockets and 5 piece elastic waistband. Available in regular and tall sizes XS to 4XL .

Also features inside chest pockets and 3-season thermal lining.

Center back length:
71 cm (28")

Internal easy access zip
for imprinting.

Leather: Goat Nappa

Recommended Imprint
Locations:
Left Chest
Back Yoke

Recommended Imprint
Type:
Stamped Deboss
3D Raised Emboss
Embroidery

Standard Production
Time: 7 to 10 business
days





AVA

Women's rugged cowhide leather zip front car coat with shirt collar, on-seam pockets, princess seams, removable zip out lining and inside chest pockets. Available in regular sizes XS to 4XL .

Center back length: 70 cm. (27.5")

Internal easy access zip for imprinting.

Leather: Rugged Cowhide

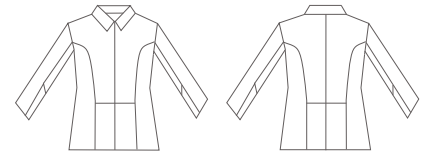
Recommended Imprint Locations:

Left Chest
Back Yoke
Cuff

Recommended Imprint Type:

Stamped Deboss
3D Raised Emboss
Embroidery

Standard Production Time: 7 to 10 business days



OSCAR

Men's rugged cowhide zip front bomber jacket with shirt collar, slash pockets, inside chest pockets, and a removable zip out lining. Available in regular sizes XS to 4XL .

Center back length: 69 cm (27")

Internal easy access zip for imprinting.

Leather: Rugged Cowhide

Recommended Imprint Locations:

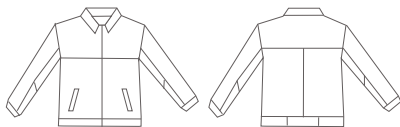
Left Chest
Back Yoke
Cuff

Recommended Imprint Type:

Stamped Deboss
3D Raised Emboss
Embroidery

Standard Production Time:

7 to 10 business days



WILL

Men's rugged cowhide 4- button front car coat with shirt collar, slash pockets, inside chest pockets and 2" quilted 3-season thermal lining. Available in regular and tall sizes XS to 4XL .

Center back length: 80 cm (31.5")

Internal easy access zip for imprinting.

Leather: Rugged Cowhide

Recommended Imprint Locations:

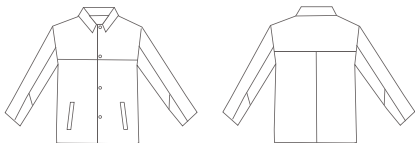
Left Chest
Back Yoke
Cuff

Recommended Imprint Type:

Stamped Deboss
3D Raised Emboss
Embroidery

Standard Production Time:

7 to 10 business days



NICOLE

Women's matchable to Men's Style: Will.

Details as above.

Center back length: 72 cm (28.5")





LOUIS

Men's rugged cowhide zip front car coat with shirt collar, slash pockets, inside chest pockets and 2" quilted lining. Available in regular and tall sizes XS to 4XL & Youth sizing!

Center back length: 80 cm (31.5")

Internal easy access zip for imprinting.

Leather: Rugged Cowhide

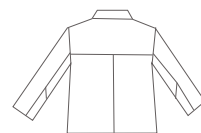
Recommended Imprint Locations:

Left Chest
Back Yoke
Cuff



Recommended Imprint Type:

Stamped Deboss
3D Raised Emboss
Embroidery



Standard Production Time: 7 to 10 business days

LOUISE

Women's rugged cowhide zip front car coat with shirt collar, slash pockets, inside chest pockets and 2" quilted lining.

Generous Fit. Available in regular sizes XS to 4XL .

(Please note pocket change is as per sketch not photo).

Center back length: 75 cm (29.5")

Internal easy access zip for imprinting.

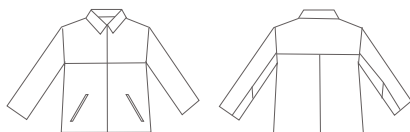
Leather: Rugged Cowhide

Recommended Imprint Locations:

Left Chest
Back Yoke
Cuff

Recommended Imprint Type:

Stamped Deboss
3D Raised Emboss
Embroidery



Standard Production Time: 7 to 10 business days



EDDIE JR

NEW

Team Leather Jacket - Available in both Youth and Adult sizing. Bomber features 6 snap front closure, retro black/cream knit collar, cuffs, and waistband, slash pockets, quilted lining and inside chest pockets. Available in regular and youth sizes S TO 2XL and adult sizing S to 4XL .

Center back length: 63 cm (25")

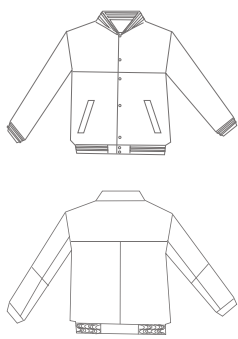
Internal easy access zip for imprinting.

Leather: Goat Nappa, Rugged Cowhide or Milled Buff

Recommended Imprint Locations:
Left Chest
Back Yoke

Recommended Imprint Type:
Stamped Deboss
3D Raised Emboss
Embroidery

Standard Production Time:
Adult - 7 to 10 business days
Youth - 4 to 6 weeks





GRACE

Women's classic James Dean style in luxury cowhide leather with zip front, shirt collar, slash pockets, inside chest pockets and lightweight lining for full 3 season wear. Available in regular and tall sizes XS to 4XL .

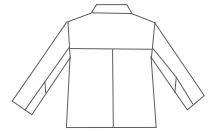
Center back length: 66 cm (28")

Internal easy access zip for imprinting.

Leather: Deer Tan Cowhide

Recommended Imprint Locations:

Left Chest
Back Yoke
Cuff



Recommended Imprint Type:

Stamped Deboss
3D Raised Emboss
Embroidery

Standard Production Time: 7 to 10 business days

BRYAN



JAMES DEAN (right)

Men's traditional James Dean style in luxury cowhide leather with zip front, shirt collar, slash pockets, inside chest pockets and lightweight lining. Available in regular and tall sizes XS to 4XL .

Center back length: 71 cm (28")

Internal easy access zip for imprinting.

Leather: Deer Tan Cowhide

Recommended Imprint Locations:

Left Chest
Back Yoke
Cuff

Recommended Imprint Type:

Stamped Deboss
3D Raised Emboss
Embroidery



Standard Production Time:

7 to 10 business days



BRYAN (left)

Men's modern bomber in luxury cowhide leather with zip front, shirt collar, slash pockets, inside chest pockets, 5 piece elastic waistband and lightweight lining. Available in regular sizes XS to 4XL .

Center back length: 71 cm (28")

Internal easy access zip for imprinting.

Leather: Deer Tan Cowhide

Recommended Imprint Locations:

Left Chest
Back Yoke

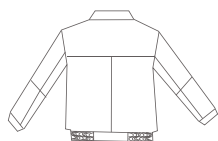
Recommended Imprint Type:

Stamped Deboss
3D Raised Emboss
Embroidery



Standard Production Time:

4 to 6 weeks



NEW



ROBYN

Women's leather button up car coat, with notched collar, hidden on seam pockets and top-stitched seams. Available in regular sizes XS to 4XL .

Center back length: 73 cm (29.5")

Internal easy access zip for imprinting.

Leather: Smooth Lamb

Recommended Imprint Locations:
Left Chest
Back Yoke

Recommended Imprint Type:
Stamped Deboss

Standard Production Time: 4 to 6 weeks



RILEY

Women's sleek leather jacket with button front, shirt collar, slash pockets and princess lines to accentuate a feminine fit. Spring/Fall light-weight lining. Available in regular sizes 2 to 16. (Please note chest seam change is as per sketch not photo).

Center back length: 68 cm (27")

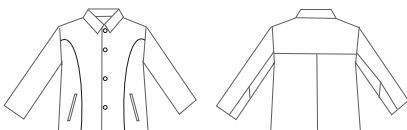
Internal easy access zip for imprinting.

Leather: Smooth Lamb

Recommended Imprint Locations:
Left Chest
Back Yoke

Recommended Imprint Type:
Stamped Deboss

Standard Production Time: 4 to 6 weeks



NEW



RYAN

Men's 3 button front leather car coat with notched collar, slash pockets and 1 interior left chest pocket. Available in regular and tall sizes XS to 4XL .

Center back length:
81 cm (32").

Internal easy access zip
for imprinting.

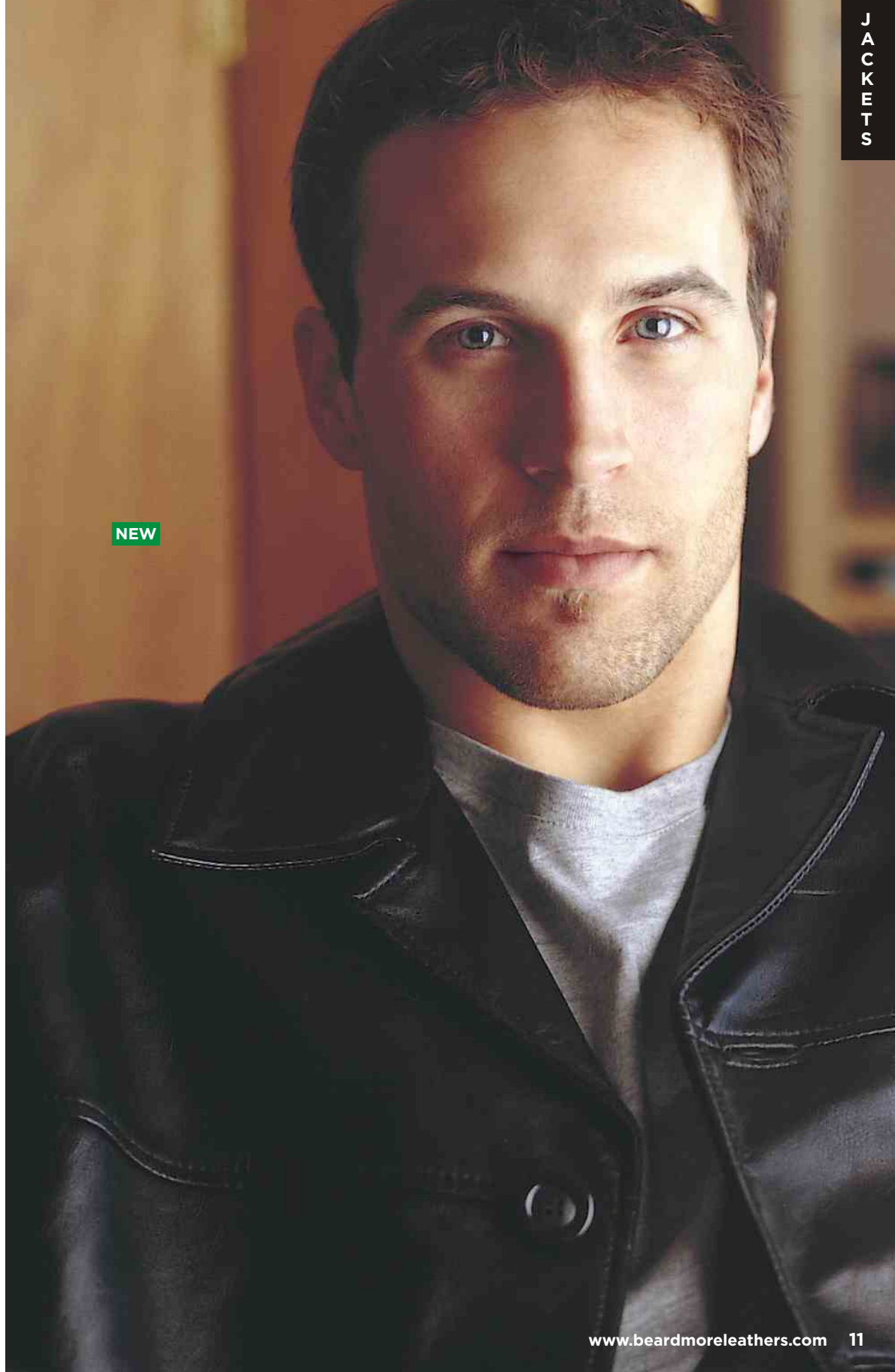
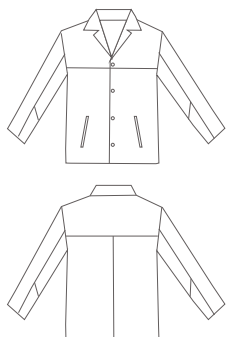
Leather: Smooth Lamb

NEW

Recommended Imprint
Locations:
Left Chest
Back Yoke

Recommended Imprint
Type:
Stamped Deboss

Standard Production
Time:
4 to 6 weeks



NEW



KAREN

Women's new zealand lamb leather zip up car coat with shirt collar, on-seam pockets, princess seaming and a lightweight thermal lining. Available in regular and tall sizes XS to 4XL .

Center back length: 73 cm. (29.5")

Internal easy access zip for imprinting.

Leather: New Zealand Lamb

Recommended Imprint Locations:

Left Chest
Back Yoke
Cuff



Recommended Imprint Type:

Stamped Deboss

Standard Production Time:

7 to 10 business days



KEVIN

Men's new zealand lamb bomber jacket with shirt collar, storm flap with 4 snap closures, adjustable domed cuff, slash pockets, inside chest pockets, and a lightweight thermal lining. Available in regular sizes and tall sizing XS to 4XL .

Center back length: 69 cm (28")

Internal easy access zip for imprinting.

Leather: New Zealand Lamb

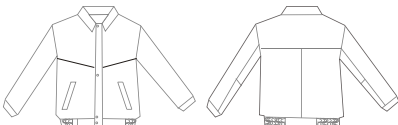
Recommended Imprint Locations:

Left Chest
Back Yoke
Cuff

Recommended Imprint Type:

Stamped Deboss

Standard Production Time: 7 to 10 business days



NEW



ALLIE

Women's fly front zip up with hidden on seam pockets and 1 interior left chest pocket.
Light-weight lining.
Available in regular sizes XS to 4XL .

Center back length:
63 cm (24").

Internal easy access zip for imprinting.

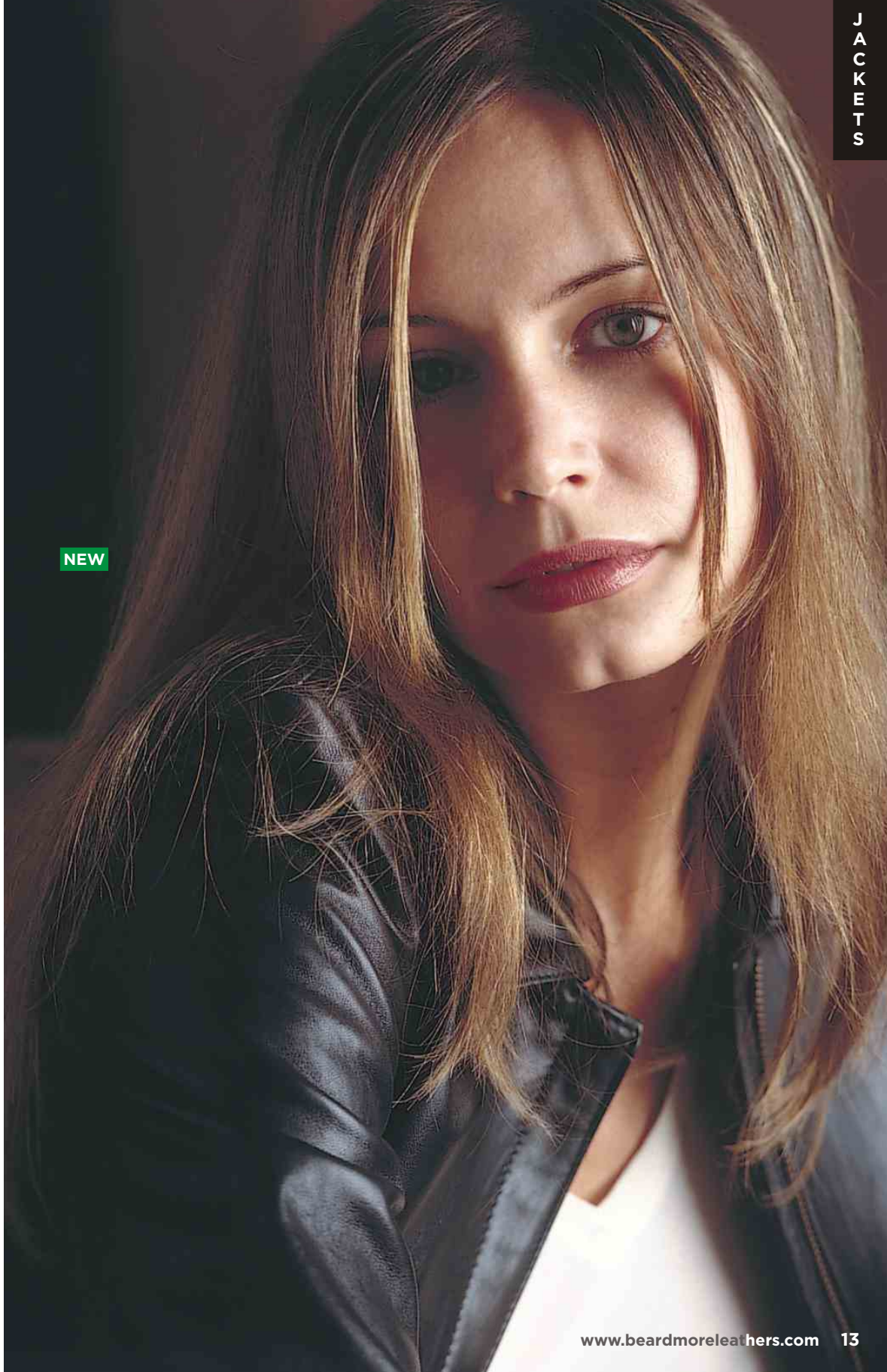
Leather: New Zealand Lamb

NEW

Recommended Imprint Locations:
Left Chest
Back Yoke

Recommended Imprint Type:
Stamped Deboss

Standard Production Time:
4 to 6 weeks



NEW



SIRI

Women's fashion biker with zip front, stand-up collar welt pockets, decorative seams and a lightweight lining. Available in regular sizes 2 to 16.

Center back length: 60 cm. (24")

Internal easy access zip for imprinting.

Leather: Smooth Lamb

Recommended Imprint Locations:

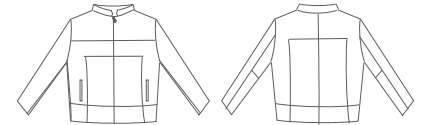
Left Chest
Back Yoke

Recommended Imprint Type:

Stamped Deboss

Standard Production Time:

4 to 6 weeks



BRANDO

Classic Brando style biker with notched snap down collar, full zip front, zip closure cuffs and pockets, inside chest pockets, comfort action back and a lightweight thermal lining. Available in regular and tall sizes XS to 4XL .

Center back length: 69 cm (27")

Internal easy access zip for imprinting.

Leather: Buffalo

Recommended Imprint Locations:

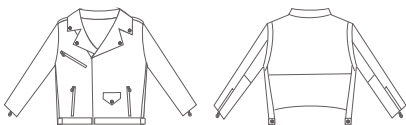
Left Chest
Back Yoke

Recommended Imprint Type:

Stamped Deboss
3D Raised Emboss
Embroidery
Other

Standard Production Time:

4 to 6 weeks



NEW



LOGAN & AUSTIN

Authentic Biker style jacket features zip front, stand-up collar with snap closure, 2 hand warmer pocket, 3 vented pockets on side and back, inside chest pockets and lightweight lining. Available in regular and tall sizes XS to 4XL .

Center back length: 71 cm (28")

NEW

Internal easy access zip for imprinting.

Leather: Buffalo, Deer Tan Cowhide (right) or Goat Nappa (simplified style AUSTIN below)

Recommended Imprint Locations:

Left Chest
Back Yoke

Recommended Imprint Type:

Stamped Deboss
3D Raised Emboss
Embroidery
Other

Standard Production Time:

4 to 6 weeks

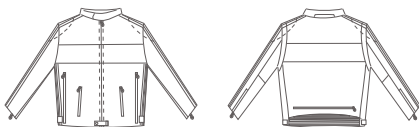


NEW

AUSTIN



BEARDMORE - BIKERS a la carte! Be Unique! Be Corporate Proud!
 Style Options, Leather Choices. Be your own Company Brand with our a la carte options!
Specialized decoration options: Hand cut leather - Antique 3D Emboss - Customize Corporate Colours
SUPPLY US YOUR VECTOR ART & WE WILL CREATE FREE VIRTUAL PRESENTATIONS



NEW



ICE MAN

Classic aviator bomber with zip front, shirt collar, adjustable domed cuffs, and 5 piece elastic waistband. Inside chest pockets and 3-season thermal lining. Available in regular sizes XS to 4XL .

Center back length: 73 cm. (28")

Internal easy access zip for imprinting.

Leather: Deer Tan Cowhide

Recommended Imprint Locations:

Left Chest
Back Yoke



Recommended Imprint Type:

Stamped Deboss
3D Raised Emboss
Embroidery



Standard Production Time: 4 to 6 weeks

BILLY & CASSIE

Men's & Women's genuine shearling pilot jackets. Men's with shirt collar, women's with stand up collar (as shown next page), antique brass zip front, rolled cuffs & welt pockets, Available in regular sizes XS to 4XL .

Center back length: 73 cm (28")

Leather: Shearling

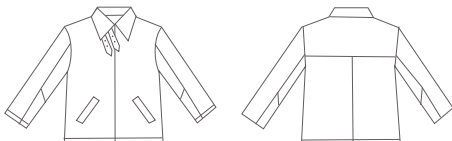
Recommended Imprint Locations:

Left Chest
Back Yoke

Recommended Imprint Type:

Embroidery

Standard Production Time: 6 to 8 weeks



MAVERICK

Classic aviator bomber with zip front, shirt collar, knit cuffs & waist band, inside chest pockets and 3-season thermal lining. Available in regular sizes XS to 4XL .

Center back length: 73 cm. (28")

Internal easy access zip for imprinting.

Leather: Buffalo Nubuck

Recommended Imprint Locations:

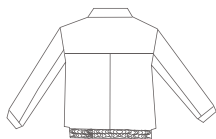
- Left Chest
- Back Yoke

Recommended Imprint Type:

- Stamped Deboss
- 3D Raised Emboss
- Embroidery

Standard Production Time:

7 to 10 business days



CASSIE





ROSS

Classic 24 oz melton/leather team jacket with 6 dome front, stand up mandarin all leather collar, cowhide sleeves, knit cuffs and waistband and button hole pockets. Inside chest pockets and quilted thermal lining. Available in regular sizes XS to 4XL .

Center back length: 71 cm (28")

Internal easy access zip for imprinting.

Leather: Rugged Cowhide

Recommended Imprint Locations:

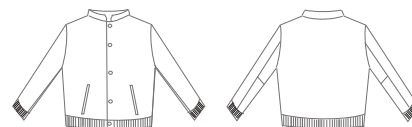
Left Chest

Back Yoke

Recommended Imprint Type:

Embroidery

Standard Production Time: 4 to 6 weeks



ROSS JR

Classic 24 oz melton/leather jacket with 6 dome front, stand up mandarin all leather collar, cowhide sleeves, knit cuffs and waistband and button hole pockets. Inside chest pockets and quilted thermal lining. Available in regular sizes S to XL .

Center back length: 63.5 cm (25")

Internal easy access zip for imprinting.

Leather: Rugged Cowhide

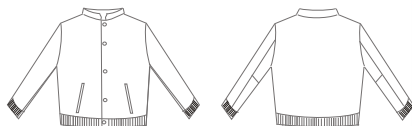
Recommended Imprint Locations:

Left Chest

Back Yoke

Recommended Imprint Type:

Embroidery



Standard Production Time: 4 to 6 weeks

THINK LEATHER - THINK BEARDMORE



RICHARD

24 oz melton/leather jacket with zip front and storm flap, all leather shirt collar, cowhide sleeves, leather cuffs and knit waistband. Inside chest pockets and quilted thermal lining. Available in regular sizes XS to 4XL.

Center back length:
71 cm (28").

Internal easy access zip
for imprinting.

Leather: Rugged Cowhide

Recommended Imprint
Locations:
Left Chest
Back Yoke

Recommended Imprint
Type:
Embroidery

Standard Production
Time:
7 to 10 business days



“THE MEDIUM IS THE MESSAGE”

Marshall McLuhan*

Promotional products are indeed the medium to send important messages intended to influence our business associates, whether customers, potential customers or employees. In selecting corporate gifts or rewards, we all want to send a positive message and project a lasting quality image of ourselves and our company. There is no medium that has more to say than leather. It represents strength, character and determination combined with quality, prestige and value. The very term “branding” comes from putting your very own distinctive mark on hides “to distinguish” your property from others. No two “brands” were to be the same.

*Marshall McLuhan has been referred to as the “High Priest of Pop Culture” and the “Metaphysician of Media”. He is considered the leading prophet of the electronic age

Our Most Popular Imprint Methods:

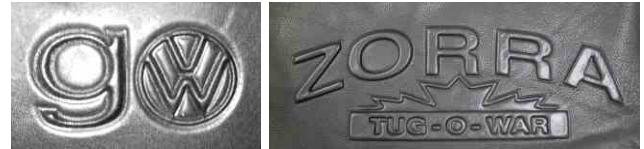
STAMPED DEBOSS

A die is created from a logo image and is then depressed into the leather or suede with high heat and pressure, so that the image sits below the product surface, sometimes referred to as blind stamping.



3D EMBOSS

The raising of an image on a product, accomplished by pressing the leather between concave and convex dies so that the image is raised above the surface of the jacket or accessory.



EMBROIDERY

A stitch file (DST) is created and the design is stitched onto the leather item through the use of high speed, computer controlled sewing machines. The design is reproduced with tightly-stitched thread. Fine detail may be difficult to achieve. Lamb leathers are not recommended.



Further Customization Options:

3D EMBOSS - ANTIQUED

The leather item is embossed (as above), the edges of the imprint are then sanded to give an aged look only suitable for Buffalo or Cowhide Leathers.

COLOUR FILL

The leather item is stamp debossed (as above) and then a coloured ink fill is applied into the deboss. Metallic fills also available.

HAND CUT LEATHER WORK

An outline is created from the design on to the leather hides. The leather is then hand cut, accentuated with embroidery (depending on the details of the logo) and stitched on to the leather item.

CUSTOM SNAPS & ZIPPER PULLS

Die-cast customize snaps & zipper pulls. Large volume orders only.

PAD PRINTING

A recessed surface is covered with ink. The plate is wiped clean, yet the ink remains in the recessed area of the plate. A silicone pad presses against the plate and pulls the ink out of the recesses. The pad then moves and presses directly against the leather product. Pad printing is excellent for imprinting small or unusually-shaped leather accessories.

SILKSCREENING

An image is transferred to the leather by ink squeegeed through a stenciled screen stretched over a frame. Screens are treated with a light-sensitive emulsion, then film positives are put in contact with the screens and exposed to light. The light hardens the emulsion not covered by the film, leaving a soft area on the screen for the squeegee to force ink through. Also referred to as screen printing.

WHY LEATHER? AND WHAT LEATHER?

Leather has been a combination of nurture and nature for mankind throughout recorded time. It has been a source of warmth and comfort used for garments and housing alike from the North American Indians to the galloping tribes of Mongols that swept across Asia. It has provided protection as armour for the Roman Legions to today's motorcyclist - used to hold your pants up and your money safe - to keep your hands and feet warm and dry always versatile and always valued. It has long provided a distinctive fashion statement related specifically to image from Brando to Dean - used in movies to represent character and strength used in life to represent value and prestige. The touch and smell of leather is special and appealing . It is a product that speaks to you and it has much to say. Words like "supple" and "premium", "quality" and "distinction - in a nutshell "simply the best".

But what leather to use?. There are many factors to consider when selecting your leather and they all affect the price and the quality and most important the message you send.

At Beardmore, we make it simple - we have the expertise and knowledge to help you find the right leather for your message and we do so committed to provide the best value for your budget. We are happy to provide product presentations supported by product knowledge and explanations to help reach the best decision for every project. We carry a wide range of 'in stock' products and we also love the challenge of customizing products to maximize the impact of each promotion or reward.

Buffalo

Extremely durable, heavier protective leather, mostly used in motorcycle apparel. Ideal for all decoration methods.

Buff Calf

Fine grain genuine Buffalo calf leather with a smooth finish. Ideal for business accessories and hard goods. Very durable. Stamped Deboss decoration method recommended.

Buffalo Nubuck

Buffed finish treatment to buffalo leather to give the leather a sueded surface feel. Ideal for all decoration methods.

Cow Nubuck

Premium cowhide in which the surface has been brushed to create a texture similar to velvet on leather. Stamped Deboss decoration recommended.

Cow Suede

Cowhide leather which has been buffed on the under side to create a "suede" nap finish. Stamped Deboss or Embroidery decoration recommended.

Deer Tan Cowhide

Luxury cowhide leather tanned and naturally milled to create the soft, supple feel of deerskin. Well suited for all decoration methods!

Goat Nappa

Top grain leather with a fine grain character which offers the combination of the durability of cowhide with the light weight comfort of lamb, ideal for everyday wear. Excellent choice for all decoration methods!

Milled Buff

Buffalo Leather naturally milled to create a soft, supple feel. Similar to Deer Tan Cowhide. Excellent choice for all decoration methods!

New Zealand Lamb

Luxury lamb. Lush, plump, buttery feel with a tight and distinct grain character suitable for men's and women's outerwear and better fashion garments. Stamped Deboss decoration only recommended.

Rugged Cowhide

Premium leather very durable with a distinctive textured "milled" appearance; excellent for the everyday outdoor, bags or accessories. Ideal for all decoration methods!

Shearling

Also known as sheepskin. Shearling is tanned with the wool of the sheep left on the warmest coat money can buy. Embroidery or Patch Appliqué decoration methods recommended.

Smooth Cowhide

Top Grain leather, very durable with a smooth appearance; excellent for the everyday business accessories. Stamp Deboss decoration method recommended.

Smooth Lamb

Very soft, lighter-weight leather suitable for men's and women's outerwear and fashion garments; supple and comfortable to wear although not as durable as cowhide as it's much thinner and lighter in weight. Lamb has a very small, almost in-existent grain character which help in giving it a dressy appearance. Stamped Deboss decoration only recommended.

Veg Tan

Naturally tanned, this dense thick cowhide leather is ideal for hard goods and accessories. This leather can be dyed or left natural, natural finish darkens with age and use. Ideal for Stamped Deboss decoration.

BEARDMORE

BETTER LEATHERS SINCE 1844
SPECIALISTS IN LEATHER & CORPORATE BRANDING
THINK LEATHER - THINK BEARDMORE

