

400 LINE
ASI/93130
PPAI 113227
UPIC KUT1910

KUTMASTER™

A DIVISION OF UTICA CUTLERY COMPANY

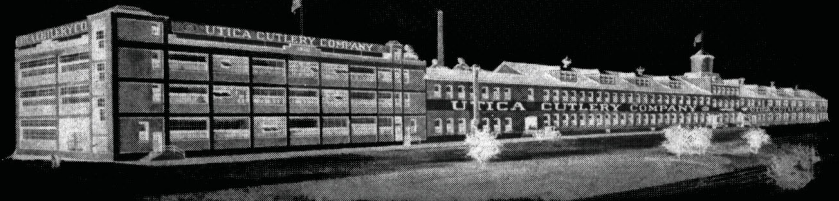
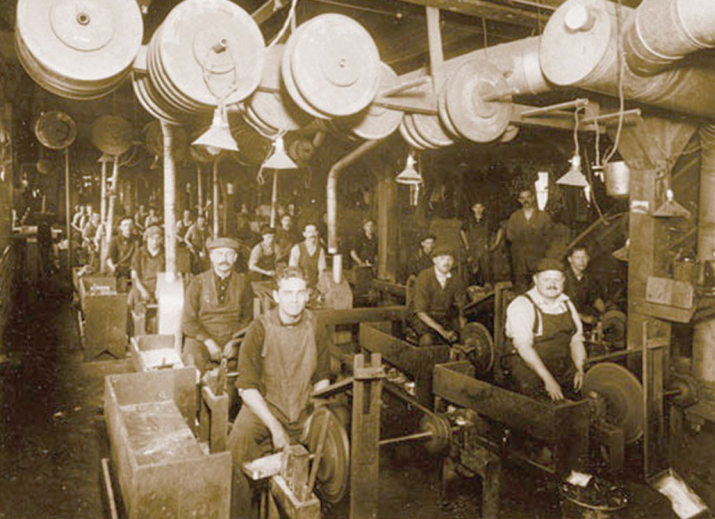
Master Knife & Tool Makers

2013



SEE PAGES 32-41 FOR USA AND UNION MADE PRODUCTS





KUTMASTER™

A DIVISION OF UTICA CUTLERY COMPANY
Master Knife & Tool Makers

The Utica Cutlery Company was founded in 1910 by a group of prominent Utica businessmen. It was felt that a metal working industry would create employment and bring economic balance to the area. The primary industry in Utica at that time was textile manufacturing.

The original location for the company was 820 Noyes Street. Through the years, several major additions were made to the building, but the address remains the same. The current size of the factory and office is approximately 100,000 square feet.

The company has continuously manufactured pocket knives since 1910. In 1918, fixed blade kitchen cutlery was added. During World War II, the company manufactured bayonets and carbine parts and earned UTICA™ the coveted Army-Navy E., as well as a number of other awards.

Stainless flatware was added to the line in 1952 and has been continuously manufactured and marketed by the company since that time. The flatware program was substantially enhanced during the mid-1970's with the addition of imported flatware. This broadened the line by adding a number of new qualities and price points.

In 1970, the company acquired the Walco Stainless Division of Voos Industries. WALCO™ is a major player in the hotel/restaurant industry and provides an entire array to the institutional market. WALCO™ is an independent division of the Utica Cutlery Company serving the institutional market.

Today, Utica's KUTMASTER™ division manufactures and imports a wide range of pocket, lockback, fixed blade, and liner lock knives. KUTMASTER™ holds patents on several multi purpose tools which are manufactured in Utica, New York. In addition to folding knives a wide array of cutlery and picnic sets are offered in both set and kit configurations. The KUTMASTER™ division services the Sporting Goods marketplace, as well as Hardware, and Advertising Specialty industry. A number of products are manufactured in Upstate N.Y. under private label arrangements for a wide range of customers.

Utica Cutlery Company is proud to celebrate over a century of manufacturing quality pocket cutlery in upstate New York. In celebration of this milestone we are making available two distinctive lines of pocket cutlery. Both lines are manufactured in much the same manner as they were in the early 20's and 30's incorporating individual craftsmanship and pride

STEAK KNIFE SETS

Model 95-WD67BXL

Redwood gift box fits four Chop steak knives. *Includes laser engraving on box top. **Price below is for box only does not include price of steak knives.**

*50	100	200	500
33.89	32.97	29.12	25.92

Setup - \$69.25(G)

Imprint Area - 3" x 1" on box cover

Shipping Weight - 25 pcs. @ 65 lbs. including knives

Class: 2ABC

Model 95-WD84BXL

Redwood gift box fits four Jumbo steak knives. *Includes laser engraving on box top. **Price below is for box only does not include price of steak knives.**

*50	100	200	500
33.89	32.97	29.12	25.92

Setup - \$69.25(G)

Imprint Area - 3" x 1" on box cover

Shipping Weight - 25 pcs. @ 65 lbs. including knives

Class: 2ABC



Model WD67BXL Shown.



Note: Variations in the darkness and depth of the laser marking may occur due to the variations in color and contrast of the wood.

**PARTNER THIS WOODEN BLOCK
WITH ANY OF OUR KNIVES ON
PAGES 4 & 6 FOR A BEAUTIFUL PRESENTATION**

WOODEN BLOCK

Model 95-940L

Wood jumbo steak knife storage block. Block holds 6 each jumbo steak knives. All jumbo steak knives featured in this catalog fit into this block. *Price includes laser engraving on one side of block.

Price includes wooden block only does not include price of knives.

*25	50	100	200	500	1000
9.74	9.45	9.20	8.95	7.90	7.03

Setup - \$69.25(G)

Shipping Weight - 25 pcs. @ 30 lbs no knives

Imprint Area - 2" x 2"

Class: 4ABC

Look at our knives on pages 4 and 6 to pair with this beautiful knife block.

Price includes wooden block only does not include price of knives.





STEAK KNIVES & STEAK KNIFE SETS

You can also order any of these knives and build a set of 6 in a knife block. See page 3 for the block and it's cost.



Model 95-930551E
 High Plains knife, delrin handle, stainless steel blade. *Includes gray/black electro etch on blade.

*50	100	200	500
11.26	10.96	10.66	10.36

Setup - \$86.25(G)
 Imprint Area - 2-1/2" x 1/2"
 Shipping weight - 50 pc @ 12 lbs.
 Class: 4A



Model 95-8405291L
 Jumbo Redwood Handle Steak Knife w/Stainless Blade. *Includes Laser engraving on handle

*50	100	200	500
11.76	10.76	9.50	9.23

Setup - \$69.25(G)
 Imprint area - 2" x 1/2"
 Shipping weight - 50pc @ 16 lbs.
 Class - 4A



Model 95-8805281E
 Jumbo Solid Black Delrin Steak Knife w/Stainless Blade. *Includes Electro etch on blade

*50	100	200	500
8.81	8.57	8.33	8.10

Setup - \$86.25(G)
 Imprint Area - 2-3/4" x 3/4"
 Shipping Weight - 50pc @ 16 lbs.
 Class - 4A



Model 95-6705271E
 Boston Chop Knife™, Jumbo black bakelite handle, double stainless bolsters.
 *Includes Gray/Black Electro etch on blade

*25	50	100	200	500
13.70	13.31	12.95	12.59	12.24

Setup - \$86.25(G)
 Imprint Area - 2-3/4" x 5/8"
 Shipping weight - 50 pc @ 25 lbs.
 Class - 5A



Model 95-6705281E
 Denver Chop Knife™, reddish-black pakka wood handle. *Includes Gray/Black Electro etch on blade

*25	50	100	200	500
14.07	13.66	13.29	12.93	12.56

Setup - \$86.25(G)
 Imprint Area - 2-3/4" x 5/8"
 Shipping weight - 50 pc @ 25 lbs.
 Class - 5A

Note: Variations in the darkness and depth of the laser marking may occur due to the variations in color and contrast of the wood.

Model 95-930554E

Set of 4 High Plains knives, delrin handles and stainless steel blades.
Packed in attractive gift box. *Includes gray/black electro etch on blades.

*25	50	100	200	500
59.21	57.48	55.94	54.40	52.86
Set Up - \$86.25(G)			Imprint Area - 2-1/2" x 1/2"	
Shipping Weight - 25 sets @ 28 lbs			Class - 4A	

Model 95-8405294L Set of 4 Steak Knives,
Stainless Blades, Redwood Handles packed in an attractive gift box.
*Includes laser engraving on handle.

*25	50	100	200	500
55.28	53.67	52.23	50.79	49.35
Setup - \$69.25(G)			Imprint Area - 2" x 1/2"	
Shipping weight - 25 sets @ 30 lbs.			Class - 4A	

Model 95-8805284E Set of 4 Steak Knives,
Stainless Blades, Black Delrin Handles, packed in an attractive
gift box. *Includes Gray/Black Electro etch on blade.

*25	100	200	500
43.73	40.79	37.84	36.71
Setup - \$86.25(G)			Imprint Area - 2-3/4" x 3/4"
Shipping weight - 25 sets @ 30 lbs.			Class - 4A

Model 95-6705274E Set of 4 Boston Chop™
Knives, Jumbo black bakelite handles, double stainless bolsters
packed in an attractive gift box.
*Includes Gray/Black Electro etch on blades.

*25	50	100	200	500
69.22	67.20	65.40	63.60	61.80
Setup - \$86.25(G)			Imprint Area - 2-3/4" x 5/8"	
Shipping weight - 25 sets @ 50 lbs.			Class - 5A	

Model 95-6705284E Set of 4 Denver Chop™
Knives, full tang, reddish-black pakka wood handles packed in an
attractive gift box. *Includes Gray/Black Electro etch on blades.

*25	50	100	200	500
71.48	69.40	67.54	65.68	63.82
Setup - \$86.25(G)			Imprint Area - 2-3/4" x 5/8"	
Shipping weight - 25 sets @ 50 lbs.			Class - 5A	



STEAK KNIVES & STEAK KNIFE SETS

Note: Variations in the darkness and depth of the laser marking may occur due to the variations in color and contrast of the wood.

You can also order any of these knives and build a set of 6 in a knife block. See page 3 for the block and it's cost.



Model 95-8405271E

Jumbo Steak Knife w/Stainless Blade, 3-rivet handle. *Includes Gray/Black Electro Etch on blade.

*25	50	100	200	500
8.54	8.29	8.07	7.84	7.62

Setup - \$86.25(G)

Imprint Area - 2-1/2" x 3/4"

Shipping Weight - 50 pcs. @ 16 lbs.

Class - 4A



Model 95-8405271L

Jumbo Steak Knife w/Stainless blade, 3-rivet handle. *Includes laser engraved handle.

*25	50	100	200	500
9.92	9.63	9.37	9.12	8.86

Setup - \$69.25(G)

Imprint Area - 2-1/2" x 3/4"

Shipping Weight - 50 pcs. @ 16 lbs.

Class - 4A



Model 95-8805271E

Jumbo Steak Knife w/Stainless Blade.

*Includes Gray/Black Electro Etch on handle.

*25	50	100	200	500
13.80	13.40	13.04	12.68	12.32

Setup - \$86.25(G)

Imprint Area - 2-1/2" x 3/8"

Shipping Weight - 50 pcs. @ 16 lbs.

Class - 4A



Model 95-6405271L

Jumbo Steak Knife w/Stainless blade, 2-rivet handle. *Includes laser engraved handle.

*50	100	200	500
7.70	6.74	6.56	6.37

Setup - \$69.25(G)

Imprint Area - 2-1/2" x 3/4"

Shipping Weight - 100 pcs. @ 32 lbs.

Class: 4A



Model 95-6405271E

Jumbo Steak Knife w/Stainless Blade, 2-rivet handle. *Includes Gray/Black Electro Etch on blade.

*50	100	200	500
5.67	5.41	5.26	5.11

Setup - \$86.25(G)

Imprint Area - 2-1/2" x 3/4"

Shipping Weight - 100 pcs. @ 32 lbs.

Class - 4A

Model 95-8405274E

Set of 4 Jumbo Stainless Steak Knives, 3-rivet construction packed in an attractive gift box. *Includes Gray/Black Electro Etch on blade.

*25	50	100	200	500
43.24	41.98	40.85	39.73	38.60

Setup - \$86.25(G)

Imprint Area - 2-1/2" x 3/4"

Shipping Weight - 25 sets @ 30 lbs.

Class - 4A

Model 95-8405274L

Set of 4 Jumbo Stainless Steak Knives, 3-rivet construction packed in an attractive gift box. *Includes laser engraving on handle.

*25	50	100	200	500
48.77	47.35	46.09	44.82	43.55

Setup - \$69.25(G)

Imprint Area - 2-1/2" x 3/4"

Shipping Weight - 25 sets @ 30 lbs.

Class - 4A

Model 95-8805274E

Set of 4 Jumbo Stainless Steak Knives, 3-rivet construction packed in an attractive gift box. *Includes Gray/Black Electro Etch on handle.

*25	50	100	200	500
61.21	59.43	57.84	56.25	54.66

Setup - \$86.25(G)

Imprint Area - 2-1/2" x 3/8"

Shipping Weight - 25 sets @ 30 lbs.

Class - 4A

Model 95-6405274E

Set of 4 Jumbo Stainless Steak Knives, 2-rivet construction packed in an attractive gift box. *Includes Gray/Black Electro Etch on blade.

*25	50	100	200	500
32.05	31.12	30.28	29.45	28.62

Setup - \$86.25(G)

Imprint Area - 2-1/2" x 3/4"

Shipping Weight - 25 sets @ 30 lbs.

Class - 4A

Model 95-6405274L

Set of 4 Jumbo Stainless Steak Knives, 2-rivet construction packed in an attractive gift box. *Includes Laser Engraving on handle.

*25	50	100	200	500
37.40	36.31	35.34	34.37	33.39

Setup - \$69.25(G)

Imprint Area - 2-1/2" x 3/4"

Shipping Weight - 25 sets @ 30 lbs.

Class - 4A



MOLDED PLASTIC HANDLE CUTLERY

95-714NW White
95-714NB Black
95-714NR Red



Model 95-714 • Butter/Cheese spreader with plastic handle. Available in white, red and black.

* Includes a one color pad print on handle. When ordering specify color wanted see above.

*250	500	1,000	2,000	3,000	Setup - \$46.25(G)	Imprint Area - 2-1/2" x 3/8"
4.32	3.37	2.77	2.44	2.18	Shipping Weight - 1000 pcs. @ 45 lbs.	Class - 3ABC

95-713NW White
95-713NB Black
95-713NR Red



Model 95-713 • 6.5" Paring Knife with plastic handle. Available in white, red and black.

* Includes a one color pad print on handle. When ordering specify color wanted see above.

*250	500	1,000	2,000	3,000	Setup - \$46.25(G)	Imprint Area - 2-1/2" x 3/8"
4.41	3.46	2.86	2.53	2.25	Shipping Weight - 1000 pcs. @ 40 lbs.	Class - 3ABC



Model 95-710NW • Fruit/Vegetable also known as tomato knife. White plastic handle.

* Includes a one color pad print on handle.

*250	500	1,000	2,000	3,000	Setup - \$46.25(G)	Imprint Area - 2-1/2" x 3/8"
4.26	3.31	2.70	2.38	2.12	Shipping Weight - 1000 pcs. @ 45 lbs.	Class - 3ABC



Model 95-711NW • Pill Counter/Spreader with white plastic handle. *Includes a one color pad print on handle.

*250	500	1,000	2,000	3,000	Setup - \$46.25(G)	Imprint Area - 2-1/2" x 3/8"
4.33	3.38	2.78	2.46	2.19	Shipping Weight - 1000 pcs. @ 55 lbs.	Class - 3ABC



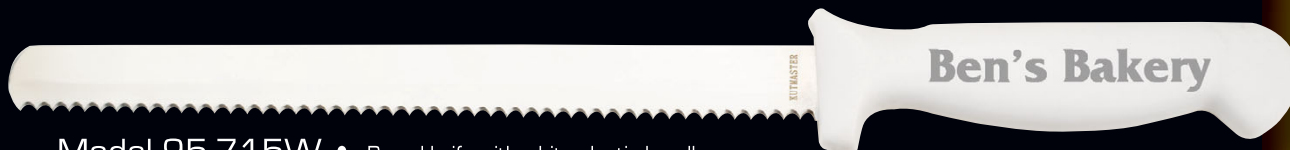
Model 95-712NO • Pumpkin Carver with orange plastic handle. *Includes a one color pad print on handle.

*250	500	1,000	2,000	3,000	Setup - \$46.25(G)	Imprint Area - 2-1/2" x 3/8"
4.45	3.50	2.90	2.56	2.28	Shipping Weight - 1000 pcs. @ 45 lbs.	Class - 3ABC



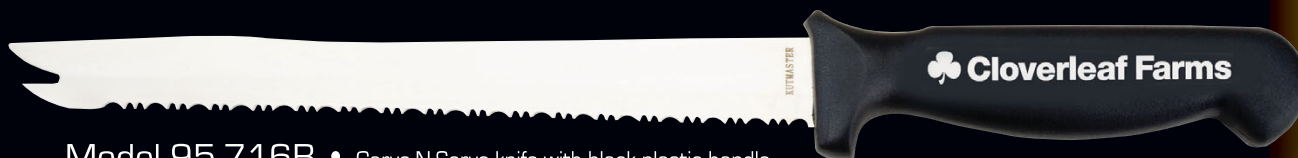
Model 95-718PP • Oyster knife/clam opener with white plastic handle. *Includes one color pad print on one side of handle.

*100	250	500	1000	2000	Set up - \$46.25(G)	Imprint Area - 2-1/2" x 1/2"
7.93	7.33	7.27	6.42	5.72	Shipping Weight - 100 pcs. @ 14 lbs.	Class - 3ABC



Model 95-715W • Bread knife with white plastic handle. *Includes a one color pad print on handle.

*250	500	1,000	2,000	3,000	Setup - \$46.25(G)	Imprint Area - 2-1/2" x 5/8"
5.51	4.86	4.54	4.28	3.60	Shipping Weight - 1000 pcs. @ 185 lbs.	Class - 3ABC



Model 95-716B • Carve-N-Serve knife with black plastic handle. *Includes a one color pad print on handle.

*250	500	1,000	2,000	3,000	Setup - \$46.25(G)	Imprint Area - 2-1/2" x 5/8"
5.29	4.64	4.73	4.04	3.40	Shipping Weight - 1000 pcs. @ 185 lbs.	Class - 3ABC



95-7105271PP
4-1/4" Stainless Steel blade, Pointed Tip, Polypropylene Handle.
*Price includes a one color pad print on handle.

*250	500	1000	2000	3000	Set Up - \$46.25(G)	Imprint Area - 2-1/2" x 3/8"
4.03	3.08	2.46	2.17	1.93	Shipping Weight - 1,000 pcs @ 38 lbs.	Class - 3ABC



95-7905271PP
4-5/8" Stainless Steel Blade, Round Tip, Polypropylene handle. *Price includes a one color pad print on handle.

*250	500	1000	2000	3000	Set Up - \$46.25(G)	Imprint Area - 2-1/2" x 3/8"
3.91	2.96	2.34	2.06	1.84	Shipping Weight - 1,000 pcs @ 75 lbs.	Class - 3ABC



95-7805271PP
4-5/8" Stainless Steel Blade, Pointed Tip, Polypropylene handle. *Price includes a one color pad print on handle.

*250	500	1000	2000	3000	Set Up - \$46.25(G)	Imprint Area - 2-1/2" x 3/8"
3.95	3.00	2.38	2.10	1.87	Shipping Weight - 1,000 pcs @ 75 lbs.	Class - 3ABC

CUTLERY SETS



Model 95-UC10307L 6-Pc. Cutlery Set with Drawer Cutting Board

15" x 11 1/2" Cutting board doubles as a convenient storage drawer for your cutlery. Pull out drawer safely stores 8" Chef's Knife, 8" Carving Knife, 8" Serrated Bread Knife, 6" Boning Knife, 4 1/4" Utility Knife and 3 1/4" Paring Knife. All cutlery features full tang 3 rivet handle construction. Blades are 420 Stainless steel and are dishwasher safe. *Includes 2" square, laser engraving on board surface.

*25	50	100	200	500	1,000
69.22	67.20	65.40	63.60	56.18	50.00
Setup - \$69.25(G)					
Imprint Area - 2" x 2"					
Shipping Weight - 25 sets @ 162 lbs.					
Class: 4ABC					



Model 95-UC10124L 24-Pc. Cutlery / Steak Knife Set

24-Pc. Cutlery / Steak Knife Set with wooden storage block. All knives feature 420 grade stainless steel blades with 3 rivet full tang construction. Entire set is dishwasher safe. Set includes 8 Steak Knives, Carving Fork, Multi Shears, 8" Sharpening Steel, 3" Paring Knife, 5" Utility Knife, 5" Sandwich Knife, 6" Boning Knife, 6" Chef's Knife, 7" Cleaver, 8" Boning Knife, 8" Chef's Knife, 8" Carving Knife, 8 1/2" Serrated Bread Knife, 9 1/2" Cook's Knife and 9 1/2" Chef's Knife. *Includes one side laser engraving on block.

*25	50	100	200	500	1,000
90.53	87.90	85.54	83.19	73.49	65.40
Setup - \$69.25(G)					
Imprint Area - 2" x 2"					
Shipping Weight - 25 sets @ 200 lbs.					
Class - 4ABC					

Note: If larger imprint is desired, consult factory for pricing
Note: Variations in the darkness and depth of the laser marking may occur due to the variations in color and contrast of the wood.

KITCHENWARE



Model 95-970E

Santoku style chef knife includes a 7" blade with a razor sharp edge and a full tang agronomical handle.
*Includes electro etch on one side of blade.

*50	100	200	500	1,000
13.04	12.04	11.91	10.70	9.55

Setup - \$86.25[G]
Imprint Area - 2-1/2" x 3/4"
Shipping Weight - 50 pcs @ 25 lbs.
Class - 3ABC

Model 95-WLB05E

Stainless Steel 11" Pastry Server.
*Includes Gray/Black Electro Etch

*25	50	100	200	500	1000
12.17	11.81	11.50	11.18	9.88	8.79

Setup - \$86.25[G]
Imprint Area - 1-1/2" x 1-1/2"
Shipping Weight - 50 pcs. @ 14 lbs.
Class - 4ABC



Model 95-WLB06E

Stainless Steel 12" Pie Server.
*Includes Gray/Black Electro Etch

*25	50	100	200	500	1000
14.51	14.09	13.71	13.34	11.78	10.49

Setup - \$86.25[G]
Imprint Area - 2" x 1-1/2"
Shipping Weight - 50 pcs. @ 16 lbs.
Class - 4ABC



Model 95-WLB08E

Stainless Steel 11.5" Pot Fork.
*Includes Gray/Black Electro Etch

*25	50	100	200	500	1000
12.13	11.77	11.46	11.14	9.84	8.76

Setup - \$86.25[G]
Imprint Area - 1-1/2" x 3/8"
Shipping Weight - 50 pcs. @ 6 lbs.
Class - 4ABC



KITCHENWARE



Model 95-5002E

Stylish tube design corkscrew made of stainless steel with a beautiful satin finish. Features retractable boot lever, two set lever and an elongated spiral.

*Price includes electro etch in one location.

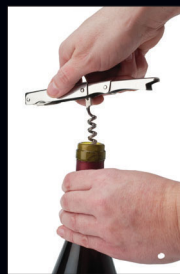
*25	50	100	200	500	1000
13.34	12.95	12.60	12.25	10.82	9.63

Setup - \$86.25(G)

Imprint Area - 2" x 1/4"

Shipping Weight - 25 pcs @ 7 lbs

Class - 4ABC



Model 95-5003E

Stylish cube design corkscrew made of stainless steel with beautiful mirror finish. Features boot lever, spiral and knife. *Price includes electro etch in one location.

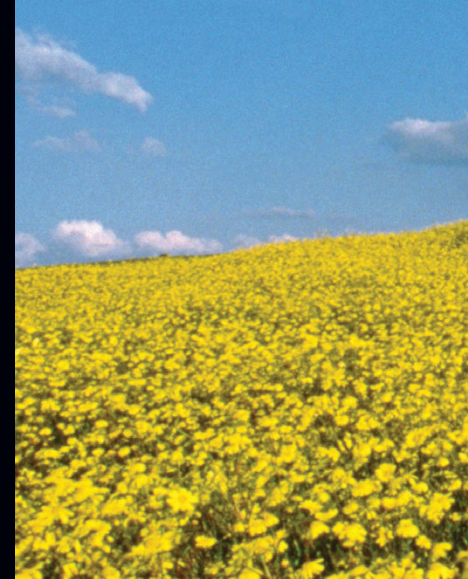
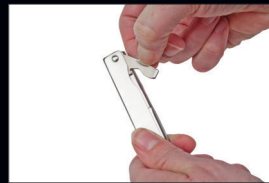
*25	50	100	200	500	1000
12.74	12.36	12.03	11.70	10.34	9.20

Setup - \$86.25(G)

Shipping Weight - 25 pcs @ 6 lbs.

Imprint Area - 2" x 1/2"

Class - 4ABC





1

Model 95-WLB11E

Stainless Steel 11" Cheese Plane.

*Includes Gray/Black Electro Etch

*50	100	200	500	1,000
10.41	10.12	9.85	8.69	7.74

Setup - \$86.25(G)

Imprint Area - 2" x 1/2"

Shipping Weight - 50 pcs. @ 16 lbs.

Class - 3ABC

2

Model 95-WLB12E

Stainless Steel 9" Slicer. *Includes Gray/Black Electro Etch

*25	50	100	200	500	1000
12.13	11.77	11.46	11.14	9.84	8.76

Setup - \$86.25(G)

Imprint Area - 2" x 1-1/2"

Shipping Weight - 50 pcs. @ 13 lbs.

Class - 4ABC

3

Model 95-WLB13E

Stainless Steel 9" Carving Knife.

*Includes Gray/Black Electro Etch

*50	100	200	500	1,000
9.78	9.52	9.25	8.17	7.28

Setup - \$86.25(G)

Imprint Area - 2" x 1/2"

Shipping Weight - 50 pcs. @ 13 lbs.

Class - 3ABC

4

Model 95-WLB01E

Stainless Steel 12" Solid Serving Spoon.

*Includes Gray/Black Electro Etch

*50	100	200	500	1000
14.32	13.94	13.56	11.97	10.66

Set up - \$86.25(G)

Imprint Area - 1-1/2" x 3/8"

Shipping Weight - 50 pcs. @ 16 lbs.

Class - 3ABC



KITCHENWARE



Model 95-45010E

8" Kitchen Shears with stainless steel blades and black rubberized handle for good gripping.

*Price includes one location electro etch on blade.

*25	50	100	200	500	1000
9.69	9.41	9.16	8.90	7.87	7.00

Setup - \$86.25[G]

Shipping Weight - 25 pcs @ 7 lbs.

Imprint Area - 1-3/4" x 1/4"

Class - 4ABC



Model 95-45016E

5" Utility knife with 5" high carbon stainless steel blade and 3 rivet full tang construction.

*Price includes one location electro etch on blade.

*50	100	200	500	1000
7.85	7.62	7.41	6.55	5.83

Setup - \$86.25[G]

Shipping Weight - 50 pcs @ 6 lbs.

Imprint Area - 2" x 5/16"

Class - 3ABC



Model 95-45018E

3.5" Paring knife with 3.5" high carbon stainless steel blade and 3 rivet full tang construction.

*Price includes one location electro etch on blade.

*50	100	200	500	1000
7.75	7.53	7.32	6.47	5.75

Setup - \$86.25[G]

Shipping Weight - 50 pcs @ 5 lbs.

Imprint Area - 1-1/2" x 1/4"

Class - 3ABC

Model 95-45011L

21 piece cutlery set in wooden storage block.
Knives feature triple riveted with full tang blades.

SET INCLUDES:

- | | |
|----------------|-----------------------|
| 8 Steak knives | Bread knife |
| Chefs knife | Cleaver |
| Santoku knife, | Carving Fork |
| Utility knife | Universal Shears |
| Paring knife | Poultry Shears |
| Slicing knife | Sharpening Steel |
| Boning knife | Wooden storage block. |

*Price includes one location laser engraving on wood block.

*25	50	100	200	500	1000
78.32	76.04	74.00	71.96	63.57	56.58
Setup - \$69.25(G)					
Shipping Weight - 25 pcs @ 205 lbs.					
Imprint Area - 2" x 2"					
Class - 4ABC					



Model 95-45012L

6 piece prep cutlery set in wooden storage block.
Knives feature triple riveted with full tang blades.

SET INCLUDES:

- | | |
|---------------|----------------------|
| Chefs knife | Paring knife |
| Santoku knife | Scissors |
| Utility knife | Wooden storage block |

*Price includes one location laser engraving on wood block.

*25	50	100	200	500	1000
28.63	27.80	27.06	26.31	23.24	20.68
Setup - \$69.25(G)					
Shipping Weight - 25 pcs @ 50 lbs.					
Imprint Area - 2" x 2"					
Class - 4ABC					



Note: If larger imprint is desired, consult factory for pricing
Note: Variations in the darkness and depth of the laser marking may occur due to the variations in color and contrast of the wood.

FLATWARE SETS

We are offering nine different patterns of quality flatware in a beautiful windowed box that can be printed with a logo and/or text. We have the sets available in a service for four or a service for eight. Each set contains teaspoons, dinner forks, salad forks, dessert spoons and dinner knives.

*Prices below include one color pad print on one location of box.



Set Up - \$46.25(G)
 Shipping Weight - 20 pc - 25 @ 57 lbs.
 - 40 pc - 25 @ 114 lbs
 Imprint Area - 3" x 3"
 Class - 4ABC



Bosa Nova™



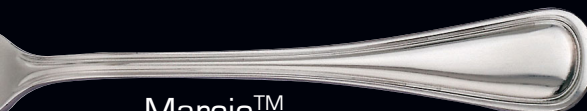
Discretion™



Imagination™



Camelot™



Marcie™



Meteor™



Royal Bristol™



Beacon™



Accolade™

Heavy Weight • 20 pc, Service for 4

95-1820PP		Bosa Nova™				
95-6520PP		Discretion™				
95-8820PP		Imagination™				
*25	50	100	200	500	1000	
45.19	43.87	42.70	41.52	36.68	32.64	

Heavy Weight • 40 pc, Service for 8

95-1840PP		Bosa Nova™				
95-6540PP		Discretion™				
95-8840PP		Imagination™				
*25	50	100	200	500	1000	
80.06	77.73	75.65	73.57	64.98	57.83	

Medium Weight • 20 pc, Service for 4

95-3920PP		Camelot™				
95-7120PP		Marcie™				
95-7020PP		Meteor™				
*25	50	100	200	500	1000	
40.52	39.34	38.29	37.23	32.89	29.27	

Medium Weight • 40 pc, Service for 8

95-3940PP		Camelot™				
95-7140PP		Marcie™				
95-7040PP		Meteor™				
*25	50	100	200	500	1000	
70.67	68.61	66.77	64.94	57.36	51.05	

Light Weight • 20 pc, Service for 4

95-5120PP		Royal Bristol™				
95-6720PP		Beacon™				
95-4520PP		Accolade™				
*25	50	100	200	500	1000	
34.94	33.92	33.01	32.10	28.36	25.24	

Light Weight • 40 pc, Service for 8

95-5140PP		Royal Bristol™				
95-6740PP		Beacon™				
95-4540PP		Accolade™				
*25	50	100	200	500	1000	
59.50	57.77	56.22	54.68	48.30	42.98	



Model 95-RT815E

6 piece Real Tree Base Camp Cutlery set offers 7" Santoku, 5 1/2" fillet, 4 3/4" Boning knife, 3" paring knife, 8 1/2" game shears and 12 3/4" plastic cutting board. All blades are manufactured from 420 high carbon stainless steel. Polypropylene handles are ergonomically designed to provide for easy cutting of all wild game. Set includes the entire cutlery that is needed to make your next outing a success.

*Includes an electro etch on blades of each knife.

*25	50	100	200	500	1,000
35.12	34.09	33.18	32.27	28.50	25.37
Set Up - \$86.25(G)					
Shipping Weight - 25 sets @ 50 lbs.					
Imprint Area - 1-1/2" x 1/4"					
Class - 4ABC					

**OFFICIALLY
LICENSED
PRODUCTS**

Team Realtree® is a registered Trademark of and Copyright under the license of Jordan Outdoor Enterprises, Ltd.

Note: The RealTree logo will be on all RealTree licensed product.



Note: All knives on this page will feature the Realtree logo on the handle of the knife.



**OFFICIALLY
LICENSED
PRODUCTS**

Model 95-RT181501PP

3" lockback featuring Realtree Hardwoods HD Camo on handles. *Includes one color pad print on handles.

*25	50	100	200	500	1,000
18.00	17.47	17.00	16.54	14.61	13.00
Set Up - \$46.25(G)					
Shipping Weight - 25 pcs @ 5 lbs.					
Imprint Area - 1-1/2" x 1/2"					
Class - 4ABC					



Model 95-RT45PP

This rugged stainless aluminum liner lock has an overall length of 7.25". The 3.5" 400 grade stainless steel blade is hand-honed to razor sharpness. Reverse side has a pocket clip. *Includes a one color pad print on handle.

*25	50	100	200	500	1,000
23.51	22.83	22.22	21.60	19.08	16.98
Set up - \$46.25(G)					
Imprint Area - 1-1/2" x 5/8"					
Shipping Weight - 25 pcs @ 7 lbs.					
Class - 4ABC					



Model 95-RT705PP

Realtree filet knife with sheath. Features a razor sharp 7.25" stainless steel blade, overall length is 13". Handle is durable full tang constructed with Realtree AP™ HD Camo coating. The blade is manufactured from 420 stainless and offers super flex for filleting fish or wildlife. Knife includes a snap on belt loop plastic sheath. *Price includes a one color pad print on handle.

*25	50	100	200	500	1,000
24.09	23.39	22.76	22.13	19.55	17.40
Set Up - \$46.25(G)					
Imprint Area - 1-3/4" x 1/2"					
Shipping Weight - 25 pcs @ 16 lbs.					
Class - 4ABC					



Note: All knives on this page will feature the RealTree logo on the blade of the product.



Model 95-RT30GRL



Model 95-RT30ORL



Model 95-RT30BLL

Note: All knives on this page will feature the Realtree logo on the handle of the knife.

Realtree linerlock is 4" closed with a green, orange or blue hard anodized handle and black electroplated 420 stainless steel blade. Top of blade features a thumb stud to allow easy one handle opening. Blade locks in open position to guard against accidental closing when in use. Reverse side of handle features stainless pocket clip.

*Price includes a laser engraving on one side of blade.

*25	50	100	200	500	1,000
16.69	16.20	15.77	15.34	13.55	12.06

Set Up - \$69.25[G]

Imprint Area - 1-1/2" x 1/4"

Shipping Weight - 25 pcs @ 7 lbs.

Class - 4ABC

OUTDOOR SPORTSMEN'S KNIVES



Model 95-016BXL

Fixed blade full tang 420 stainless steel blade with G10 handles. Ergonomically designed for perfect hand placement. Knife measures 8" in length. Includes heavy duty nylon sheath with lanyard. *Price includes a laser engraving on pouch or blade of knife.

*25	50	100	200	500	1,000
29.81	28.94	28.17	27.39	24.20	21.53

Set Up - \$69.25[G]

Imprint Area - 2" x 1/2" Blade

- 1-1/4" x 1/2" Sheath

Shipping Weight - 25 pcs. @ 20 lbs.

Class - 4ABC



Model 95-7914L

Razor Sharp 400 grade stainless steel fixed blade with gut hook. Handle is made of Kryton rubber for firm grip. Knife measures 8.5" in length. Includes heavy duty black cordura sheath. *Price includes a laser engraving on pouch or blade of knife.

*25	50	100	200	500	1,000
22.50	21.84	21.26	20.67	18.26	16.25

Set Up - \$69.25[G]

Imprint Area - 2" x 1/2" Blade

- 1-1/4" x 1/2" Sheath

Shipping Weight - 25 pcs. @ 15 lbs.

Class - 4ABC

Model 95-1977PP

4" liner lock with green digital camouflage handle and 3" blade. Knife features thumb stud for easy one hand opening and clip on reverse side of handle. *Price includes one color pad print on handle.

*25	50	100	200	500	1000
15.01	14.57	14.18	13.79	12.18	10.84

Setup - \$46.25(G)

Shipping Weight - 25 pcs @ 6 lbs.

Imprint Area - 2" x 3/8"

Class - 4ABC



Model 95-1978PP

4-1/2" liner lock with brown digital camouflage handle and 3-1/8" blade. Knife features thumb stud for easy one hand opening, lanyard hole and clip on reverse side of handle. *Price includes one color pad print on handle.

*25	50	100	200	500	1000
20.21	19.62	19.10	18.57	16.41	14.60

Setup - \$46.25(G)

Shipping Weight - 25 pcs @ 7 lbs.

Imprint Area - 2" x 3/8"

Class - 4ABC



OUTDOOR SPORTSMEN'S KNIVES



Model 95-1985L

5" Lockback with brass bolsters and stainless blade
*Includes laser engraved handle

*25	50	100	200	500	1,000
21.36	20.74	20.19	19.63	17.34	15.43

For FAL V, five-inch leather sheath add \$6.50 [D]

* If lasering on pouch is desired, add \$1.50[G] running charge. Set-up \$69.25[G]

Setup - \$69.25[G]

Imprint Area - 2-1/4" x 1/2"

Shipping Weight - 50 pcs. @ 40 lbs.

Class - 4ABC

Model 95-1985E

5" Lockback with brass bolsters and stainless blade
*Includes Electro Etch on blade

*25	50	100	200	500	1,000
20.63	20.03	19.49	18.95	16.74	14.90

For FAL V, five-inch leather sheath add \$6.50 [D]

* If lasering on pouch is desired, add \$1.50[G] running charge. Set-up - \$69.25[G]

Setup - \$86.25[G]

Imprint Area - 2" x 1/2"

Shipping Weight - 50 pcs. @ 40 lbs.

Class - 4ABC

Model 95-1983E

3" Wood Handle Lockback Knife with brass bolsters.
Features 2" stainless blade

*Includes Gray/Black Electro Etch on blade

*25	50	100	200	500	1,000
11.77	11.42	11.12	10.81	9.55	8.50

Setup - \$86.25[G]

Imprint Area - 1-1/4" x 3/8"

Shipping Weight - 50 pcs. @ 6 lbs.

Class - 4ABC

Model 95-1983L

3" Wood Handle Lockback Knife with brass bolsters.
Features 2" stainless blade.

*Includes Laser Engraved Handle

*25	50	100	200	500	1000
13.20	12.81	12.47	12.13	10.71	9.53

Setup - \$69.25[G]

Imprint Area - 3/4" x 3/8"

Shipping Weight - 50 pcs. @ 6 lbs.

Class - 4ABC

Note: Variations in the darkness and depth of the laser marking may occur due to the variations in color and contrast of the wood.

FOLDING KNIVES

1

Model 95-1820L

4" Black Liner Lock. Knife features thumb stud on blade for easy one hand opening and pocket clip on reverse side of handle. *Includes laser engraving on handle.

*25	50	100	200	500	1,000
14.65	14.22	13.84	13.46	11.89	10.58

Set Up - \$69.25(G)

Imprint Area - 2" x 1/2"

Shipping Weight - 25 pcs @ 6 lbs.

Class - 4ABC

2

Model 95-18502E

4" Zytel tough handle with non-slip rubber inserts. Features quick snap, safety liner lock designer blade. Reverse side of handle has metal belt clip.

*Includes Gray/Black Electro Etch on blade.

*50	100	200	500	1,000
7.80	7.58	7.37	6.51	5.80

Setup - \$86.25(G)

Imprint Area - 1-3/4" x 1/2"

Shipping Weight - 50 pcs @ 10 lbs.

Class - 3ABC

3

Model 95-18501E

3" Zytel Tough handle with non-slip rubber inserts. Features quick snap, safety liner lock designer blade. Reverse side of handle has metal belt clip.

*Includes Gray/Black Electro Etch on blade.

*100	200	500	1,000
6.93	6.74	5.96	5.30

Setup - \$86.25(G)

Imprint Area - 3/4" x 3/8"

Shipping Weight - 100 pcs @ 10 lbs.

Class - 2ABC

4

Model 95-1825L

Features folding razor, safety-locking blade. Razor blade safely locks in place when opened. Quick change, thumb stud release allows for easy replacement of blade. Knife measures 6.2" opened, 3.8" closed. Reverse side of knife has stainless pocket clip. *Includes laser marking on one side of anodized knife handle. Comes with 1 utility blade and accepts standard, 2 notch utility replacement blades.

*25	50	100	200	500	1,000
19.57	19.00	18.49	17.98	15.88	14.13

Setup - \$69.25(G)

Imprint Area - 2" x 5/8"

Shipping Weight - 25 pcs. @ 7 lbs.

Class - 4ABC



1

2

3

4

FOLDING KNIVES

Model 95-181501E

3" Stainless Steel Lockback features 2-1/4" taper stainless blade. *Includes Gray/Black Electro Etch on handle

*25	50	100	200	500	1000
9.10	8.84	8.60	8.36	7.39	6.57

Setup - \$86.25[G]

Imprint Area - 1-3/4" x 1/2"

Shipping Weight - 50 pcs. @ 9 lbs.

Class - 4ABC



Model 95-181501SS

3" Stainless Steel Lockback features 2-1/4" taper stainless blade. *Includes one color pad print on handle

*25	50	100	200	500	1000
10.89	10.57	10.29	10.01	8.84	7.87

Setup - \$46.25[G]

Imprint Area - 1-3/4" x 1/2"

Shipping Weight - 50 pcs. @ 9 lbs.

Class - 4ABC



Model 95-181502E

3" Stainless Lockback features 2" stainless blade. *Includes Gray/Black Electro Etch on handle

*100	200	500	1,000
6.41	6.23	5.51	4.90

Setup - \$86.25[G]

Imprint Area - 1-1/2" x 1/2"

Shipping Weight - 100 pcs. @ 18 lbs.

Class - 2ABC



Model 95-1982L

3" wood handle Lockback Knife features 2-1/2" stainless blade.

*Includes Laser Engraved handle

*100	200	500	1,000
8.87	8.62	7.62	6.78

Setup - \$69.25[G]

Imprint Area - 2-1/4" x 1/2"

Shipping Weight - 100 pcs. @ 18 lbs.

Class - 2ABC





Model 95-403PL

14" Ivory plastic handle bowie knife. Knife features full tang construction with brass finger guard. Heavy duty nylon sheath included. *Price includes one color pad print on handle or laser engraving on blade or sheath.

*1	5	10	25	50	100
91.88	89.20	86.81	84.42	74.57	66.37
Set Up - \$69.25(G) laser etch blade or sheath - \$46.25(G)] pad print handle					
Imprint Area - 3" x 1" Blade 2-1/4" x 1-1/2" Sheath 2-1/2" x 3/4" Handle					
Shipping Weight - 1 pc @ 3 lbs. Class - 4ABC					

Model 95-403WLWL

14" Wooden handle bowie knife. Knife features full tang construction with brass finger guard. Heavy duty nylon sheath included. *Price includes laser engraving on handle or blade or sheath.

*1	5	10	25	50	100
91.88	89.20	86.81	84.42	74.57	66.37
Set Up - \$69.25(G)					
Imprint Area - 3" x 1" Blade 2-1/4" x 1-1/2" Sheath 2-1/2" x 3/4" Handle					
Shipping Weigh - 1 pc @ 3 lbs. Class - 4ABC					

Model 95-4033SDL

Optional hard wood stand for 14" bowie knives. Stand makes bowie knife presentable as an award or decoration piece. *Price includes a laser engraving on base portion of stand.

*1	5	10	25	50	100
24.14	23.43	22.80	22.18	19.59	17.44

Set Up - \$69.25(G)
Shipping Weight - 1 pc @ 2 lbs.

Imprint Area - 4" x 1/2"
Class - 4ABC



MULTITOOLS

Kutmater WrenchHead™ Model 95-5070E



34-Function Multi Tool with Case Features break away "T" handle design for added turning torque, along with locking blades. Produced from 400 grade stainless, the WrenchHead™ features a unique ergonomically designed handle which allows for easy use during operation.

*Includes Gray/Black Electro Etch on one side of handle.

FUNCTIONS INCLUDE:

- | | | | |
|--------------------------|---------------------------|-----------------------|--------------------------|
| Needle nose Pliers | Wire Gripper | #6 & #8 Slotted Bits | 1/8" & 5/32" Hex Bits |
| Cutters | Break Away Torque Handle | Files (Fine/Coarse) | #1, #2, #3 Phillips Bits |
| Small Gasket Scraper | Awl/Hole Punch with Large | Clip Blade | T25 & T27 Torque Bits |
| Spark Plug Feeler Gauge | Locking "L" Cam Lock | Gasket Scraper | S1 & S2 Square Bits |
| Serrated Sheepfoot Blade | | American/Metric Ruler | |

United States Patent 5,950,265

Locking Bit Compartment

- 4 Hex Wrenches 7/16", 3/8", 5/16", 1/4"
- 1/2", 9/16", 10mm, 12mm Drive Sockets in Socket Holder
- Nylon Pouch w/ Wrench-Head logo
- 1/4" Drive Socket Adapter in Bit Holder

*25	50	100	200	500	1,000
33.37	32.39	31.53	30.66	27.08	24.10
Setup - \$86.25(G)				Imprint Area - 2" x 3/8"	
Shipping Weight - 25 pcs. @ 37.5 lbs.				Class - 4ABC	



Model 95-5012E

Patented 16-Function Stainless, Locking Mini Tool. Measures 2-1/4" closed. *Includes Gray/Black Electro Etch on Handle.

FUNCTIONS INCLUDE:

- | | | |
|---------------|----------------|-----------------------|
| Clip Blade | 2 Screwdrivers | Phillips Screwdriver |
| Scissors | 3 Hex Wrenches | Cap Lifter |
| Bottle Opener | Nail File | American/Metric Ruler |
| Tweezers | Lanyard | |

*50	100	200	500	1,000
8.17	7.72	7.51	6.63	5.90
Setup - \$86.25(G)				Imprint Area - 1-3/4" x 3/8"
Shipping Weight - 50 pcs. @ 12 lbs.				Class - -3ABC



Model 95-5006PP

Garden scissor multi function tool. *Includes one color pad print on handles.

TOOL FEATURES:

spring loaded scissors coarse saw blade
fine saw blade knife blade
weed root cutter

*25	50	100	200	500	1000
40.28	39.11	38.06	37.02	32.70	29.10

Set Up - \$46.25[G]

Shipping Weight - 25 pcs. @ 13 lbs.

Imprint Area - 2-1/2" x 3/8"

Class - 4ABC

Model 95-5007E

Multi function camper tool. Tool features fork, spoon, knife, bottle opener and can opener.

*Includes electro etch in one location on handle.

*25	50	100	200	500	1000
9.42	9.15	8.90	8.66	7.65	6.80

Set Up - \$86.25[G]

Shipping Weight - 25 pcs. @ 7 lbs.

Imprint Area - 3/4" x 1/2"

Class - 4ABC



Model 95-5008L

Mini clip knife. Knife features caribeaner clip, spear blade, bottler opener and screwdriver.

*Includes laser engraving on one side of handle.

*25	50	100	200	500	1000
10.80	10.49	10.21	9.93	8.77	7.80

Set up - \$69.25[G]

Shipping Weight - 25 pcs. @ 4 lbs.

Imprint Area - 1-1/4" x 3/8"

Class - 4ABC





Model 95-1837L • Heavy Duty Rescue Knife

Heavy duty rescue knife features a partially serrated 420 stainless steel blade, double edge seat belt cutter, and glass breaker. Thumb stud offers right or left hand opening.

*Includes laser engraving on handle.

*25	50	100	200	500	1000
23.75	23.06	22.45	21.83	19.28	17.16

Set up - \$69.25(G)

Imprint Area - 1-3/4" x 1/2"

Shipping Weight - 25 pcs. @ 12 lbs.

Class - 4ABC



Model 95-1833E • Immediate Response Rescue Knife

Immediate Response Rescue Knife features a 3-1/2" tanto blade with safety liner lock.

The handle incorporates a razor sharp seat belt cutter with glass breaker end. The handle of the knife also safely stores four bits. *Includes electro etch on blade.

*25	50	100	200	500	1,000
20.15	19.56	19.04	18.51	16.35	14.56

Set Up - \$86.25(G)

Shipping Weight - 25 pcs @ 32 lbs.

Imprint Area - 2" x 1/2"

Class - 4ABC

RESCUE SERIES

*Great gift or give away item to
Policemen, Firemen, EMT's,
Car Dealers, Auto Body Tech's
and many, many more.*

Model 95-1832L • Compact Rescue Knife

Measures 3 1/2" closed with a 2 1/4" 420 stainless steel, modified Tanto blade. Features a razor sharp seat belt cutter with easy brake, glass breaker tip at end of handle. *Includes laser engraving on handle.

*25	50	100	200	500	1,000
17.07	16.58	16.13	15.69	13.86	12.33

Set Up - \$69.25(G)

Shipping Weight - 25 pcs @ 10 lbs.

Imprint Area - 1-1/4" x 1/2"

Class - 4ABC



Model 95-1830L • Red Handle

Model 95-1830BL • Blue Handle

We are proud to offer this rough and tough tactical rescue folder that has been designed for superior performance. The 3-3/8" blade is solid, 420 stainless steel construction with a piercing tanto point. The impact resistant, aluminum handle is equipped with a razor sharp seat belt cutter, auto window breaker point, pocket clip. It is 7 3/8" overall in length open. *Includes laser engraving on handle.

*25	50	100	200	500	1000
23.99	23.30	22.67	22.05	19.48	17.33

Set up - \$69.25(G)

Imprint Area - 2" x 1/2"

Shipping Weight - 25 pcs. @ 12 lbs.

Class - 4ABC



FRUIT & VEGETABLE SAMPLER KNIVES



95-109PP • 4-3/4" plastic handle fruit/vegetable knife. 3-3/4" long, stainless steel blade with taper grind. Reverse side of handle features belt clip. *Price includes one color pad print on handle.

*100	250	500	1000	2000
7.36	6.49	6.36	5.73	5.10

Setup - \$46.25(G) Imprint Area - 2-1/2" x 5/8"
Shipping Weight - 250 pcs @ 25 lbs Class - 3ABC



Model 95-1712SS • 4-3/4" Stainless Fruit/Vegetable Knife
*Price includes one color pad print on handle.

*50	100	200	500	1,000
11.73	11.42	11.10	9.80	8.72

Setup - \$46.25(G) Imprint Area - 2-1/2" x 3/8"
Shipping Weight - 50 pcs. @ 16 lbs. Class - 3ABC

For Wave Edge Blade use (Model# 951712SSWE) and add \$1.00 (A)



Model 95-1712E • 4-3/4" Stainless Fruit/Vegetable Knife
*Includes Gray/Black Electro Etch on handle.

*50	100	200	500	1,000
10.16	9.89	9.61	8.49	7.56

Setup - \$86.25(G) Imprint Area - 2-1/2" x 3/8"
Shipping Weight - 50 pcs. @ 16 lbs. Class - 3ABC

For Wave Edge Blade use (Model# 951712EWE) and add \$1.00 (A)



Model 95-113E • 5-3/4" Stainless Fruit/Vegetable knife. 4-7/8" 400 grade stainless blade with taper grind. * Includes Gray/Black Electro Etch on handle.

*50	100	200	500	1,000
10.57	10.29	10.00	8.84	7.87

Set Up - \$86.25(G)
Imprint Area - 2-1/2" x 3/8"
Shipping Weight - 50 pcs @ 24 lbs.
Class - 3ABC

Model 95-113SS • 5-3/4" Stainless Fruit/Vegetable knife. 4-7/8" 400 grade stainless blade with taper grind. *Price includes one color pad print on handle.

*50	100	200	500	1,000
12.20	11.87	11.54	10.20	9.08

Set Up - \$46.25(G)
Imprint Area - 2-1/2" x 3/8"
Shipping Weight - 50 pcs @ 24 lbs.
Class - 3ABC





Optional Wave Edge Blade: Available on Models 1712; 110WHS, 1714 & 112WHS, 113. Add \$1.00 (A)

Model 95-1727P • Black nylon belt loop pouch. This pouch fits our models 95-1712E, 95-1712SS, 95-2712E, 95-2712SS, 95-1714E, 95-1714SS, 95-109PP and 95-110WHS. No customizing available on pouches.

50	100	200	500	1000	
3.57	3.47	3.37	2.97	2.65	Class 3ABC

Model 95-2712SS • 4-5/8" Stainless Fruit/Vegetable Knife. Features Stainless Serrated pen blade with sampling fork. *Price includes one color pad print on handle.

*25	50	100	200	500	1,000
14.31	13.89	13.53	13.16	11.62	10.34
Setup - \$46.25(G)			Imprint Area - 2-1/2" x 3/8"		
Shipping Weight - 50 pcs. @ 16 lbs.			Class - 4ABC		

Model 95-2712E • 4-5/8" Stainless Fruit/Vegetable Knife. Stainless serrated pen blade with sampling fork. *Includes Gray/Black Electro Etch on handle.

*50	100	200	500	1,000	
10.59	10.31	10.03	8.86	7.89	
Setup - \$86.25(G)			Imprint Area - 2-1/2" x 3/8"		
Shipping Weight - 50 pcs. @ 16 lbs.			Class - 3ABC		

Model 95-110WHS • 4-3/4" ivory plastic handle Fruit/Vegetable Knife. 3-3/4" long, 400 grade stainless blade with taper grind. *Price includes one color logo or copy on one side of ivory handle. Total length open: 8-5/8".

*25	50	100	200	500	1000
13.61	13.22	12.86	12.51	11.05	9.83
Setup - \$46.25(G)			Imprint Area - 2" x 3/8"		
Shipping Weight - 25 pcs. @ 4 lbs.			Class - 3ABC		

For Wave Edge Blade use (Model# 95110WSWE) and add \$1.00 (A)

Model 95-112WHS • 5-3/4" ivory plastic handle Fruit/Vegetable Knife. 4-7/8" long, 400 grade stainless blade with taper grind. *Price includes one color logo or copy on one side of ivory handle. Total length open: 10-1/2".

*25	50	100	200	500	1000
14.21	13.80	13.43	13.06	11.54	10.27
Setup - \$46.25(G)			Imprint Area - 2 1/4" x 1/2"		
Shipping Weight - 25 pcs. @ 5-1/2 lbs.			Class - 3ABC		



FRUIT & VEGETABLE SAMPLER KNIVES



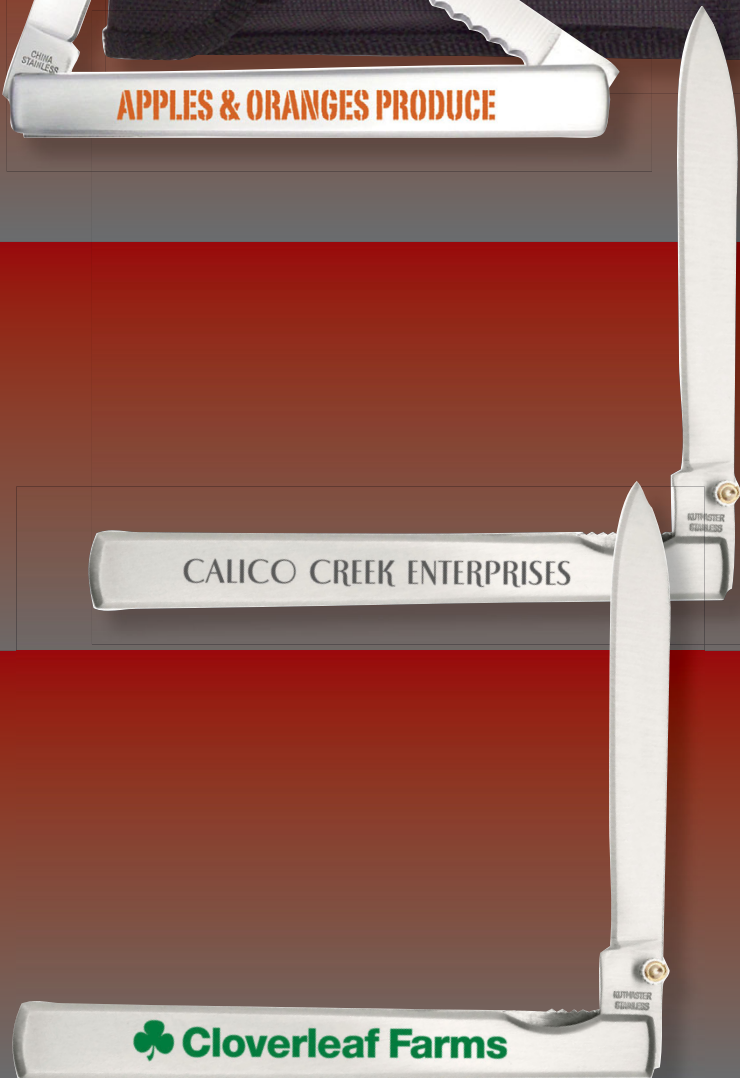
Model 95-2714E • 4-5/8" Stainless - Heavy Duty - Fruit/Vegetable Sampler with Nylon Pouch. Includes two 400 grade stainless spear blades. One blade is serrated to cut through tough rinds and stalks, the other is taper ground with a razor sharp edge. Knife is stored in convenient belt loop pouch. *Includes Gray/Black Electro Etch on one side of handle.

*25	50	100	200	500	1000
11.73	11.39	11.09	10.78	9.52	8.48
Setup - \$86.25(G)					
Imprint Area - 2-1/2" x 3/8"					
Shipping Weight - 50 pcs. @ 20 lbs.					
Class - 4ABC					



Model 95-2714SS • 4-5/8" Stainless - Heavy Duty - Fruit/Vegetable Sampler with Nylon Pouch. Includes two 400 grade stainless spear blades. One blade is serrated to cut through tough rinds and stalks, the other is taper ground with a razor sharp edge. Knife is stored in convenient belt loop pouch. *Price includes one color pad print on handle.

*25	50	100	200	500	1000
13.16	12.78	12.44	12.09	10.68	9.51
Setup - \$46.25(G)					
Imprint Area - 2-1/2" x 3/8"					
Shipping Weight - 50 pcs. @ 20 lbs.					
Class - 4ABC					



Model 95-1714E • 4-5/8" Stainless Liner Locking Fruit/Vegetable Sampler. Features a safety liner locking 3-7/8" blade. Liner lock positions blade safely in the lock position when fully opened. *Includes Gray/Black Electro Etch on handle.

*50	100	200	500	1,000
11.72	11.41	11.10	9.80	8.72
Setup - \$86.25(G)				
Imprint Area - 2-1/2" x 3/8"				
Shipping Weight - 50 pcs. @ 11 lbs.				
Class - 3ABC				

Liner Lock Device,
locks blade in open position



Model 95-1714SS • 4-5/8" Stainless Liner Locking Fruit/Vegetable Sampler. Features a safety liner locking 3-7/8" blade. Liner lock positions blade safely in the lock position when fully opened. *Price includes one color pad print on handle.

*50	100	200	500	1,000
13.14	12.79	12.44	10.99	9.78
Setup - \$46.25(G)				
Imprint Area - 2-1/2" x 3/8"				
Shipping Weight - 50 pcs. @ 11 lbs.				
Class - 3ABC				

HI-TECH TACTICALS



LINER LOCK SERIES

Model 15-191L

Hi Tech G-10 Handle Material. Stainless Steel Liner. Black anodized Stainless Steel Blade. Thumb stud can be operated right or left handed for smooth one hand opening. Features pocket clip on reverse side of handle. *Price includes laser engraving on one side of blade.

*25	50	100	200	500	1,000
27.71	26.90	26.18	25.46	24.74	24.02
Set Up - \$69.25(G)			Imprint Area - 2" x 1/2"		
Shipping Weight - 25 pcs @ 12 lbs.			Class - 6C		

Model 15-195L

Stainless Steel Black Anodized Frame and Blade. Aluminum side plates with Stainless Steel Clip. Thumb Stud can be operated right or left handed for smooth one hand opening. Features pocket clip on reverse side of handle. *Includes laser engraving on handle.

*25	50	100	200	500	1,000
23.48	22.99	22.18	21.57	20.96	20.35
Set Up - \$69.25(G)			Imprint Area - 1-1/4" x 1/2"		
Shipping Weight - 25 pcs @ 12 lbs.			Class - 6C		



LOCKBACK SERIES

Model 15-131029SS

3" Stainless Steel lockback features 2-1/4" tapered stainless blade with a brushed stainless handle.

*Price includes one color pad print on handle.

*25	50	100	200	500	1,000
33.57	32.60	31.72	30.85	29.98	29.10
Setup - \$46.25(G)			Imprint Area - 1-3/4" x 1/2"		
Shipping Weight - 25 pcs. @ 4-1/2 lbs.			Class - 6C		

Model 15-131029E

3" Stainless Steel lockback features 2-1/4" tapered stainless blade with a brushed stainless handle.

*Includes Gray/Black electro etch on handle

*25	50	100	200	500	1,000
32.66	31.71	30.86	30.01	29.16	28.31
Setup - \$86.25(G)			Imprint Area - 1-3/4" x 1/2"		
Shipping Weight - 25 pcs. @ 4-1/2 lbs.			Class - 6C		





15-7962BBE Brown Jigged Bone

6 3/4" fixed blade skinner/capting knife and leather sheath.
Price includes one location etch on blade.

1	12	25	50	100	200
60.32	58.56	56.99	55.43	53.86	52.29

Set up - \$86.25[G]

Shipping Weigh - 25 pcs @ 11 lbs

Imprint Area - 1-1/2" x 1/2"

Class - 6C

15-7961BBE Brown Jigged Bone

8" fixed blade skinner/capting knife and leather sheath.
Price includes one location etch on blade.

1	12	25	50	100	200
67.08	65.12	63.38	61.63	59.89	58.15

Set up - \$86.25[G]

Shipping Weight - 25 pcs @ 16 lbs

Imprint Area - 2" x 1/2"

Class - 6C



FIXED BLADES NEW FOR 2013



UTICA CUTLERY CO

**Over a Century
of Excellence**

15-7962WE Hardwood

6 3/4" fixed blade skinner/capting knife and leather sheath.
Price includes one location etch on blade.

1	12	25	50	100	200
51.72	50.21	48.87	47.52	46.18	44.83

Set up - \$86.25[G]

Shipping Weight - 25 pcs @ 11 lbs

Imprint Area - 1-1/2" x 1/2"

Class - 6C

15-7961WE Hardwood

8" fixed blade skinner/capting knife and leather sheath.
Price includes one location etch on blade.

1	12	25	50	100	200
54.02	52.45	51.05	49.64	48.24	46.83

Set up - \$86.25[G]

Shipping Weight - 25 pcs @ 16 lbs

Imprint Area - 2" x 1/2"

Class - 6C





34 / 35

15-7962GBE Green Jigged Bone

6 3/4" fixed blade skinner/capting knife and leather sheath.
Price includes one location etch on blade.

1	12	25	50	100	200
60.32	58.56	56.99	55.43	53.86	52.29

Set up - \$86.25(G)

Shipping Weight - 25 pcs @ 11 lbs

Imprint Area - 1-1/2" x 1/2"

Class - 6C

15-7961GBE Green Jigged Bone

8" fixed blade skinner/capting knife and leather sheath.
Price includes one location etch on blade.

1	12	25	50	100	200
67.08	65.12	63.38	61.63	59.89	58.15

Set up - \$86.25(G)

Shipping Weight - 25 pcs @ 16 lbs

Imprint Area - 2" x 1/2"

Class - 6C



ADIRONDACK



BIG PINE



LOCKBACKS Lavish, deep green, jugged bone handles set the BIG PINE series apart from any other knives found today. Blades are crafted from 1095 carbon steel with a taper ground razor edge. Classic Utica war shield is embedded into one side of the handle of most models. Bolsters are solid nickel silver. **MADE IN USA**

1 Model 15-22979GBE • 4" Trapper

*Includes electro etch on spear blade.

*1	12	25	50	100	200
42.32	41.09	39.99	38.89	37.79	36.69
Setup - \$86.25(G)			Imprint Area - 1 -1/2" x 1/4"		
Shipping Weight - 25 pcs. @ 10 lbs.			Class - 6C		

2 Model 15-23079GBE • 4-3/16" Trapper

*Includes electro etch on spear blade.

*1	12	25	50	100	200
46.77	45.40	44.19	42.97	41.76	40.54
Set Up - \$86.25(G)			Imprint Area - 1-1/2" x 1/4"		
Shipping Weight - 25 pcs @ 12 lbs.			Class - 6C		

3 Model 15-24779GBE • 3-1/4" Barlow

*Includes electro etch on spear blade.

*1	12	25	50	100	200
42.81	41.56	40.45	39.34	38.22	37.11
Set Up - \$86.25(G)			Imprint Area - 1-1/4" x 1/4"		
Shipping Weight - 25 pcs @ 10 lbs.			Class - 6C		

4 Model 15-32379GBE • 3-1/4" Serpentine

*Includes electro etch on spear blade.

*1	12	25	50	100	200
51.73	50.23	48.88	47.54	46.19	44.85
Set Up - \$86.25(G)			Imprint Area - 1-1/2" x 1/8"		
Shipping Weight - 25 pcs @ 8 lbs.			Class - 6C		

5 Model 15-32579GBE • 3-7/8" Stockmans

*Includes electro etch on spear blade.

*1	12	25	50	100	200
53.04	51.50	50.12	48.74	47.36	45.98
Set Up - \$86.25(G)			Imprint Area - 1-1/2" x 1/8"		
Shipping Weight - 25 pcs @ 10 lbs.			Class - 6C		

6 Model 15-32779GBE • 3-5/8" Stockmans

*Includes electro etch on spear blade.

*1	12	25	50	100	200
50.60	49.12	47.81	46.49	45.18	43.86
Setup - \$86.25(G)			Imprint Area - 1 1/2" x 1/8"		
Shipping Weight - 25 pcs. @ 8 lbs.			Class - 6C		



1



2



3



4



5



6

CATSKILL



36 / 37



LOCKBACKS High polished, vivid hardwood handles set the ADIRONDACK series apart from any other wood handle knife. High polished 420 stainless steel blades feature a ground taper edge. Solid nickel silver bolsters with matching pins round out this unique series. **MADE IN THE USA**

1 Model 15-22979BBE • 4" Trapper

*Includes electro etch on spear blade.

*1	12	25	50	100	200
42.32	41.09	39.99	38.89	37.79	36.69
Setup - \$86.25(G)			Imprint Area - 1 1/2" x 1/4"		
Shipping Weight - 25 pcs. @ 10 lbs.			Class - 6C		

2 Model 15-23079BBE • 4-3/16" Trapper

*Includes electro etch on spear blade.

*1	12	25	50	100	200
46.77	45.40	44.19	42.97	41.76	40.54
Set Up - \$86.25(G)			Imprint Area - 1-1/2" x 1/4"		
Shipping Weight - 25 pcs @ 12 lbs			Class - 6C		

3 Model 15-24779BBE • 3-1/4" Barlow

*Includes electro etch on spear blade.

*1	12	25	50	100	200
42.81	41.56	40.45	39.34	38.22	37.11
Set Up - \$86.25(G)			Imprint Area - 1-1/4" x 1/4"		
Shipping Weight - 25 pcs @ 10 lbs.			Class - 6C		

4 Model 15-32379BBE • 3-1/4" Serpentine

*Includes electro etch on spear blade.

*1	12	25	50	100	200
51.73	50.23	48.88	47.54	46.19	44.85
Set Up - \$86.25(G)			Imprint Area - 1-1/2" x 1/8"		
Shipping Weight - 25 pcs @ 8 lbs.			Class - 6C		

5 Model 15-32579BBE • 3-7/8" Stockmans

*Includes electro etch on spear blade.

*1	12	25	50	100	200
53.04	51.50	50.12	48.74	47.36	45.98
Set Up - \$86.25(G)			Imprint Area - 1-1/2" x 1/8"		
Shipping Weight - 25 pcs @ 10 lbs.			Class - 6C		

6 Model 15-32779BBE • 3-5/8" Stockman's

*Includes electro etch on spear blade.

*1	12	25	50	100	200
50.60	49.12	47.81	46.49	45.18	43.86
Setup - \$86.25(G)			Imprint Area - 1 1/2" x 1/8"		
Shipping Weight - 25 pcs. @ 8 lbs.			Class - 6C		

ADIRONDACK



LOCKBACKS High polished, vivid hardwood handles set the ADIRONDACK series apart from any other wood handle knife. High polished 420 stainless steel blades feature a ground taper edge. Solid nickel silver bolsters with matching pins round out this unique series.

MADE IN THE USA

1 Model 95-23089WL • 4-3/16" Trapper

*Includes laser engraved handle.

* 1	12	25	50	100	200
50.60	49.12	47.81	46.49	45.18	43.86
Set Up - \$69.25(G)			Imprint Area - 2" x 1/2"		
Shipping Weight - 25 pcs @ 12 lbs.			Class - 6C		

2 Model 15-22989WL • 3-7/8" Trapper

*Includes laser engraved handle.

* 1	12	25	50	100	200
41.87	40.65	39.56	38.47	37.38	36.30
Set Up - \$69.25(G)			Imprint Area - 2" x 1/2"		
Shipping Weight - 25 pcs @ 12 lbs.			Class - 6C		

3 Model 15-24789WL • 3-1/4" Barlow

*Includes laser engraved handle.

* 1	12	25	50	100	200
39.39	38.24	37.21	36.19	35.17	34.14
Set Up - \$69.25(G)			Imprint Area - 2-1/2" x 3/8"		
Shipping Weight - 25 pcs @ 10 lbs.			Class - 6C		

4 Model 15-32389WL • 3-1/4" Serpentine

*Includes laser engraved handle.

* 1	12	25	50	100	200
51.71	50.20	48.86	47.51	46.17	44.82
Set Up - \$69.25(G)			Imprint Area - 2" x 1/4"		
Shipping Weight - 25 pcs @ 8 lbs.			Class - 6C		

5 Model 15-32789WL • 3-9/16" Stockmans

*Includes laser engraved handle.

* 1	12	25	50	100	200
51.71	50.20	48.86	47.51	46.17	44.82
Set Up - \$69.25(G)			Imprint Area - 2" x 1/2"		
Shipping Weight - 25 pcs @ 12 lbs.			Class - 6C		

6 Model 15-32589WL • 3-7/8" Stockmans

* Includes laser engraved handle.

* 1	12	25	50	100	200
41.61	40.40	39.31	38.23	37.15	36.07
Set Up - \$69.25(G)			Imprint Area - 2" x 1/2"		
Shipping Weight - 25 pcs @ 5 lbs.			Class - 6C		



1



2



3



4



5



6



38 / 39

SPORTSMEN'S LOCKBACKS



Model 15-17101L

5" lockback with brass bolsters and stainless blade.
*Includes Laser engraved handle

*25	50	100	200	500	1,000
44.83	43.99	43.37	42.75	42.12	41.50

For FAL V, five-inch leather sheath add \$6.50 (D) If lasering desired on pouch add \$1.50(g) run charge. Setup \$69.25(G)

Setup - \$69.25(G) Imprint Area - 2" x 1 1/2"
Shipping Weight - 25 pcs. @ 19 lbs. Class - 6C

Model 15-17101E

5" lockback with brass bolsters and stainless blade.
*Includes Gray/Black Electro Etch on blade

*25	50	100	200	500	1,000
43.81	42.99	42.39	41.78	41.16	40.57

For FAL V, five-inch leather sheath add \$6.50 (D) If lasering desired on pouch add \$1.50(g) run charge. Setup \$69.25(G)

Setup - \$86.25(G) Imprint Area - 1-3/4" x 1 1/2"
Shipping Weight - 25 pcs. @ 19 lbs. Class - 6C

Model 15-169L

3" wood handle lockback knife with brass bolsters features
2" stainless blade. *Includes laser engraved handle

*25	50	100	200	500	1,000
33.57	32.96	32.49	32.02	31.56	31.10

Setup - \$69.25(G) Imprint Area - 1-1/4" x 3/8"
Shipping Weight - 25 pcs. @ 3 lbs. Class - 6C

Model 15-169E

3" wood handle lockback knife with brass bolsters. Features
2" stainless blade. *Includes Gray/Black Electro etch on blade

*25	50	100	200	500	1,000
31.36	30.78	30.34	29.90	29.48	29.04

Setup - \$86.25(G) Imprint Area - 1" x 3/8"
Shipping weight - 25 pcs. @ 3 lbs. Class - 6C



Note: Variations in the darkness and depth of the laser marking may occur due to the variations in color and contrast of the wood.



Model 15-3536E

MINIMASTER 16-Function Personal Pocket Tool. Full Stainless construction with locking implements. *Includes gray/black electro etch on handle.

MPLEMENTS:

Scissors	Clip Blade	Medium Screwdriver	Tweezers
Phillips Screwdriver	Nail File	Small Screwdriver	
Bottle Opener	3 Hex Wrenches	CapLifter/Locking Device	
	Lanyard Ring	Metric/American Standard Ruler	

*25	50	100	200	500	1,000
28.60	28.07	27.68	27.27	26.87	26.49

Setup - \$86.25[G]

Shipping Weight - 25 pcs. @ 4-1/2 lbs.

Imprint Area - 1-3/4" x 5/16"

Class - 6C



United States Patent 5,950,265



Needle nose model pictured.

Model 15-3566E

MULTIMASTER 17-Function Multi-tool. Needle Nose pliers design.

Model 15-3565E

MULTIMASTER 17-Function Multi-tool. Blunt Nose pliers design.

Fully stainless construction with locking "L" handle. Offered with nylon pouch, bits and holder. *Includes Gray/Black Electro Etch on handle.

*25	50	100	200	500	1,000
52.64	51.11	49.74	48.37	47.00	45.63

Setup - \$86.25[G]

Shipping Weight - 25 pcs. @ 19 lbs.

Imprint Area - 1-3/4" x 1/2"

Class - 6C

MPLEMENTS:

Needle Nose Pliers	Clip Blade
Cutters	Phillips/Slotted
Grippers	Screwdriver Bits
Coarse/Fine File	1/4" Socket
Wave Edge	Adapter Bit
Sheepfoot Blade	Lanyard Hole
Metric/Standard Ruler	Universal Can/Bottle
Saw	Opener



CUSTOM SCULPTURED METAL KNIVES

40/41



Model 15-131B

3" custom Brass Lockback includes custom scene on front of handle with generic initial panel on reverse side of knife.

250	500	700	1,000	1,500	2,000
34.61	33.60	32.70	31.80	30.90	30.00

One time custom die charge - \$1,650.00 (G)
 Imprint Area - 3" x 3/4"
 Shipping Weight - 25 pcs. @ 4 lbs.
 Class - 6C



Model 15-131NS

3" custom Nickel Silver Lockback includes custom scene on front of handle with generic initial panel on reverse side of knife. Minimum order 250 each please consult factory for pricing.



Model 131NSGS

3" custom Nickel Silver lockback with Gold and Silver plating on one or both sides of handle. Consult factory for pricing.



Model 15-204NS

3" custom Nickel Silver equal end pocket knife. Includes custom scene on both sides of handle. Minimum order 250 each please consult factory for pricing.



Model 15-204B

3" custom brass equal end pocket knife. Includes custom scene on both sides of handle.

250	500	700	1,000	1,500	2,000
33.84	32.85	31.97	31.09	30.21	29.33

One time custom die charge - \$1,650.00 (G)
 Imprint Area - 3" x 3/4"
 Shipping Weight - 25 pcs. @ 4-1/2 lbs.
 Class - 6C



Cutlery - Indispensable

Have you ever stopped to consider what life would be like if we had no knives?

Even a casual glance at the history of man reveals that the invention and perfection of the knife, which is in effect to say all cutting tools, freed man from endless toil, made possible his thousand and one uses of natural resources, and thereby his evolution from savage to contemporary man.

Modern industry, which makes the things with which we work and live, uses knives every hour of the day. The individual workman would be helpless without cutting tools. The homemaker, without whom the home would suffer, uses a knife on the average of 32 times a day.

It is not surprising that cutlery, which we take for granted almost without second thought, is indispensable!

The Cutlery Story by Lewis D. Bement 1950

GENERAL INFORMATION – TERMS AND CONDITIONS

Camera Ready Art/Graphics:

Artwork that is not camera-ready such as photocopies, faxed art, business cards, unseparated art or art that needs to be laid out, touched up, or typeset etc, will be charged \$25.00(G). Complex art is subject to art charges at a rate of \$50.00(G) per hour. This will be noted prior to acknowledgement of your order.

E-mailing Artwork:

Camera-ready art may be e-mailed in jpeg, tiff, eps, or cdr file format to artwork@kutmaster.com

Proofs:

\$6.00(G) for fax or paper proofs will be added to all other charges. Revision of proofs will be recharged.

Note: Responsibility for design and imprint lies with buyer when a proof is approved or if no proof is requested.

Speculative/Preproduction Sample:

\$50.00(G) per time in addition to die, stencil, screen or laser set-up charge.

Over/Under Runs:

Due to the nature of our manufacturing process we reserve the right to under/overship any order by 5%

Less Than Minimum:

There is a charge of \$50.00 (G) for orders less than the quantity minimum.

Unimprinted Production:

Non imprint items will be billed at end quantity price. Minimum quantities apply. We will accept no returns.

Production Time:

Normal production time on most orders is 2 to 3 weeks. Rush orders are available and will be billed at \$50.00(G). Factory authorization is required.

Samples:

All imprinted samples billed at end quantity pricing, no returns will be accepted unless authorized by the factory.

Shipping:

- All orders are FOB our factory in Utica, NY
- Orders will be shipped the most convenient way unless otherwise specified
- For overnight or 2-day service, please furnish us with your carrier's account number

- Goods lost or damaged after leaving our facilities are the responsibility of the carrier
- For drop shipments or split shipments add \$15.00(G) per each additional address
- No C.O.D. shipment will be accepted

Returns:

All claims must be submitted in writing within ten days of receipt of goods. No merchandise will be accepted without prior authorization and a return number issued by the factory.

Trademark Usage:

Artwork, designs, logos, and trademarks imprinted on products in this catalog have been reproduced as an example of the quality of printing available from Kutmaster. They are not intended to represent or constitute an endorsement of Kutmaster or its products by any other company. Acceptance of copy or other material submitted by the customer for use by Kutmaster in producing the products ordered will be accepted by the factory as being submitted in full compliance with all applicable laws regarding trademark, service mark, copyright, right of privacy, patent contractual limitations or similar protection.

Packaging:

All products packed in either a one-piece white or black folding box or a two-piece black set up box.

Web Site:

Entire catalog may be viewed at <http://asisupplier.com/93130>

Exact Repeat Set up Charges:

Laser Engraving \$37.50(G)
Pad Printing \$37.50(G)
Electro Etch \$0.00

Second Location Charges:

Laser Engraving \$69.25(G), Run Charge \$1.57(G) per knife/tool
Pad Printing \$46.25(G), Run Charge \$.43(G) per knife/tool
Electro Etch \$86.25(G) Run Charge \$1.19(G) per knife/tool

Pad Printing

2 color set up \$92.50(G), Run Charge \$.43(G) per knife/tool
3 color set up \$138.75(G), Run Charge \$.86(G) per knife/tool
4 color set up \$185.00(G), Run Charge \$1.29 (G) per knife/tool

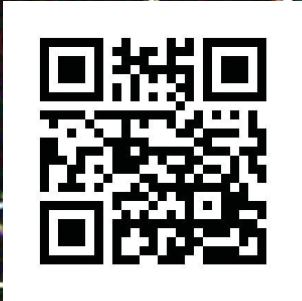


400 LINE ASI/93130/PPAI | 13227

KUTMASTER™

A DIVISION OF UTICA CUTLERY COMPANY

Master Knife & Tool Makers



VGuard 12.12 10M