



2012  
CATALOG



# TABLE of CONTENTS



**BUSINESS**  
PAGE 4



**BACKPACKS**  
PAGE 26



**TOTES**  
PAGE 36



BLANKETS  
PAGE 50



COOLERS  
PAGE 58



SPORT / LEISURE  
PAGE 70

## Alpha EZ Scan Collection

NEW!



BGT S01

BGT S02

**BGTS02**  
**ALPHA EZ SCAN COMPU-CASE** **NEW!**

12.5"hx16"wx5.5"d      1680d polyester  
 Color: Black      420d dobby rip-stop

- It's clear sailing through airport security with this business case
- Dedicated 15" laptop section opens to lay flat on the X-ray belt for increased speed through security
- Organization for cords, files and small articles is integrated into two additional sections
- Adjustable padded shoulder strap is also removable

BGTS02BK

Embellishment	Area	12	25	50	100	250
Imprinted	5"hx5"w	65.22	64.60	63.03	61.49	59.99
Embroidered	4.5"hx6"w	68.43	66.76	65.13	63.54	61.99

5C



-okta laptop



-okta laptop

**BGTS01**  
**ALPHA EZ SCAN COMPU-PACK** **NEW!**

17.5"hx12.5"wx7.75"d      1680d polyester  
 Color: Black      420d dobby rip-stop

- Speed through airport security with the greatest of ease
- Dedicated 15" laptop section opens to lay flat on the X-ray belt for speed and convenience through security
- Two additional sections provide cord management and document organization
- Padded shoulder straps and back panel ensure comfort while traveling

BGTS01BK

Embellishment	Area	12	25	50	100	250
Imprinted	4"hx4"w	62.91	61.37	59.88	58.41	56.99
Embroidered	4"hx4"w	65.11	63.53	61.98	60.46	58.99

5C

## The City Collection

NEW!



BG583

BG581

BG582



**BG582**  
**THE CITY COMPU-CASE**

13.25" h x 17.75" w x 2.75" d      Microfiber  
Color: Black

- Smooth microfiber construction is both distinctive and durable
- Trim styling conceals a suspended padded laptop sleeve sized to fit most 17" computers
- Padded grab handles, adjustable/removable shoulder strap and trolley strap accommodate your personal travel style



BG982BK

Embellishment Area	25	50	100	250	500
Imprinted 5" h x 5" w	32.00	31.22	30.46	29.71	28.99
Embroidered 6" diam	34.21	33.37	32.56	31.76	30.99

5C



**NEW!**

**BG583  
THE CITY COMPU-PACK**

17.75"hx12.25"wx4.5"d      Microfiber  
Color: Black

- A trim profile, in durable microfiber, sets this compu-pack apart from the crowd
- Pockets for cord management, files and smaller items keep you organized
- Padded laptop sleeve is sized to accommodate most 17" computers



-ok to laptop



Size: 17" x 12" x 4"

BG583BK

Embellishment Area	25	50	100	250	500
Imprinted 4"hx4"w	29.79	29.07	28.36	27.66	26.99
Embroidered 3" diam	32.00	31.22	30.46	29.71	28.99
					5C





**BG581**  
**THE CITY ROLLING DUFFEL**

11.25"hx21"wx22.5"d      Microfiber  
Color: Black

- Stylish and versatile, this duffel is as easily packed as a carry-on as it is a gym bag
- Main section features an extended zipper for top loading, or open all the way to allow easy access to items at the bottom of the bag
- Convenient pocket by the 16" telescoping handle features an organizer for small items like your cell phone, business cards, pens or boarding pass



BG581BK

Embellishment Area	12	25	50	100	250
Imprinted 4"hx6.5"w	51.87	50.60	49.37	48.16	46.99
Embroidered 4" diam.	54.08	52.76	51.47	50.21	48.99
					5C



**BG576  
HAYDEN COMPU-CASE**

11.5" h x 15.75" w x 4.75" d      Simulated Leather

Color: Black

- An update to the traditional business case
- Exclusive padding in suspended laptop pocket ensures your computer will be secure
- Cut-away front pocket, under flap, provides easy access to executive organizer
- Removable, adjustable shoulder strap is padded for extra comfort



BG576BK

Embellishment Area	12	25	50	100	250
Debossed 4" h x 4" w	48.96	47.37	46.22	45.09	43.99

5C

**BG553  
CARGO COMPU-PACK**

16" h x 13.5" w x 6.5" d 600d Polyester / Rip-Stop  
Color: Black

- Convertible straps allow this bag to be carried like a brief or a backpack
- Easy access laptop compartment is padded for added safety
- Organizer under flap keeps smaller items within easy reach
- Convenient flap pocket includes an MP3 holder and ear bud port



-ok Laptop



Ear Bud Port



BG553BK

Embellishment Area	12	25	50	100	250
Imprinted 4.5" h x 4.5" w	35.31	34.45	33.61	32.79	31.99
Embroidered 4" diam.	37.52	36.60	35.71	34.84	33.99

5C





**BG562  
METRO COMPU-CASE**

13.5" h x 16" w x 3.25" d 1200d Polyester / Dobby  
Color: Black

- Style and design for the busy executive
- Exterior pocket contains organizer and key fob
- Gusseted main compartment opens wide to allow for easy access to interior
- Removable pouch, CD storage and mesh pockets separate small items from files
- Back pocket easily slides over trolley handle



**BG562BK**

Embellishment	Area	12	25	50	100	250
Imprinted	5" h x 6" w	37.52	36.60	35.71	34.84	33.99
Embroidered	3" diam.	39.73	38.76	37.81	36.89	35.99
						5C



# Hamilton Collection



**BG176  
HAMILTON COMPU-TOTE**

12.75"hx16.75"wx5"d Canvas, Simulated Leather  
Color: Tan

- + Tan waterproof canvas combines with rich brown accents for a refined look
- + Trim padded computer section makes this the perfect business tote
- + Interior organization, with a removable accessories pouch, for easy storage of all your travel needs



BG176TN

Embellishment	Area	12	25	50	100	250
Imprinted (Fabric)	2"hx4"w	85.55	83.46	81.42	79.44	77.50
Debossed (Sim. Leather)	1.5"hx3.5"w	87.19	85.06	82.99	80.96	78.99

5C

**BG564  
HAMILTON COMPU-CASE**

14.25"hx16.25"wx5"d Canvas, Simulated Leather  
Color: Tan

- + Tan waterproof canvas is handsomely accented with brown trim for a classic look
- + Clever pocket, on top of bag, keeps cell phones handy
- + Padded computer compartment keeps a 15" laptop protected while traveling



BG564TN

Embellishment	Area	12	25	50	100	250
Imprinted	5"hx3.5"w	92.67	90.40	88.20	86.05	83.96
Embroidered	3"diam.	97.30	94.98	92.61	90.35	88.15

5C



**BG800  
HARTFORD MESSENGER**

13"fx15.5"wx3.5"d 20oz Canvas/Leather  
Colors: Navy, Black, Sand

- Trimmed in leather – this bag will become your favorite take-along
- Roomy main compartment contains a padded laptop pouch and zippered pocket with room to spare
- Two generous gusseted pockets under flap keep cords and other necessities organized
- Rear slot pocket provides quick access to papers



Eco-friendly material



100% recycled

BG800NY, BG800BK, BG800SN

Embell.	Area	12	25	50	100	250	500
Imprinted 4"fx4"w		51.65	50.39	49.16	47.96	46.79	45.65
Embroid. 4" diam		54.23	52.91	51.62	50.36	49.13	47.93

€



**MeadJohnson**  
Nutrition



Eco-friendly material

**BG810  
HARTFORD TOTE**

13"hx20"wx5"d 20oz Canvas/Leather  
Colors: Sand, Navy, Black

- Heavy dyed canvas body
- Stylish contrast stitching
- Vegetable tanned leather trim/ rolled handles with 9" drop
- Zippered top closure and two zippered exterior pockets
- Large interior pocket with hidden magnetic closure

BG810SN, BG810NY, BG810BK

Embell.	Area	12	25	50	100	250	500
Imprinted	4"hw4"ww	38.46	38.62	37.88	36.76	35.86	34.99
Embroid.	4" diam.	41.85	40.88	39.88	38.86	37.91	36.99

6C



**BG535  
LOOP BUSINESS CASE**



10"hx18"wx3"d 600d Polyester  
Colors: Royal, Red

- + Stylish design, with accent colors, gets your logo noticed
- + Exterior pen loops, and large front slot pocket make this a great conference bag
- + Computer compartment is lightly padded and perfect for executives on the go

BG535RY, BG535RD

Embellishment	Area	50	100	250	500	1000
Imprinted	6"hx7"w	15.44	15.07	14.70	14.34	13.99
Embroidered	6"d.a.m.	17.65	17.22	16.80	16.39	15.99

5C



See the matching  
Loop Convention  
Tote on page 37.



**BG558  
CLASSIC ATTACHÉ**

13"hx16.5"wx3.5"d 600d Polyester / Vinyl  
Colors: Black, Hunter

- + Expand this bag when you need more room – just open zipper at bottom of bag
- + Deluxe organizer provides storage for all portable media, business cards, cell phone and more
- + Zippered front flap has roomy quick-stow pocket
- + Detachable, adjustable shoulder strap with metal details for added durability

BG558BK, BG558HU

Embellishment	Area	50	100	250	500	1000
Imprinted	3"hx10"w	15.44	15.07	14.70	14.34	13.99
Embroidered	3"hx4"w	17.65	17.22	16.80	16.39	15.99

5C







See the matching Terra Verde Tote on page 37.



Eco-friendly material

**BG545  
TERRA VERDE MESSENGER**

12" x 14.5" x 2" d    500gsm Polypropylene  
Color: Gray, Black

- Eco-friendly materials meet the office – in style!
- Thick felted non-woven polypropylene becomes a messenger bag that will stand the test of time
- Sized to hold documents, brochures and tablets with a magnetic closure



BG545GY, BG545BK

Embellishment Area	50	100	250	500	1000
Imprinted 7" x 9" w	17.65	17.22	16.80	16.39	15.99
Embroidered 5" x 6" w	19.86	19.37	18.90	18.44	17.99
					5C

# The Hook Collection

**NEW!**



BG850

BG853

BG852

BG851



**BG850**  
**THE HOOK COMPU-CASE**



17"hx12.5"wx4"d  
Color: Red, Black, Royal  
420d dobby, 600d polyester  
210d polyester

- Being a professional on the go has never been more eye catching
- Handy organizer under front flap keeps pens, cell phone and business cards within reach
- Padded laptop sleeve keeps your equipment safe when traveling
- Exterior pocket on flap is perfect for boarding passes or keys



BG850RD, BG850BK, BG850RY

Embellishment	Area	50	100	250	500	1000
Imprinted	5"hx5"w	18.75	18.30	17.85	17.41	16.99
Embroidered	4" diam.	20.95	20.45	19.95	19.46	18.99

5C



**BG851**  
**THE HOOK TABLE BRIEF**



10.25"hx15"wx1.25"d  
Color: Red, Black, Royal  
420d dobby, 600d polyester  
210d polyester

- iPad, Kindle, Nook etc., no matter which tablet you prefer The Hook Tablet Brief is the perfect companion
- The soft interior tech material keeps your tablet cushioned and safe from scratches
- Perfectly proportioned to accommodate paperwork and files
- An exterior pocket keeps chargers at your fingertips

BG851RD, BG851BK, BG851RY

Embellishment	Area	50	100	250	500	1000
Imprinted	3.5"hx11"w	16.55	16.14	15.75	15.36	14.99
Embroidered	3.75" diam.	18.75	18.30	17.85	17.41	16.99

5C



Soft interior fabric protects tablets



**ST151  
TRADITION WRITING PAD**

12.75"hx10.25"wx.25"d 300d Polyester /  
Simulated Leather

Color: Black

- Open front pocket
- Interior organizer
- Business card pockets and pen / flash drive loop
- 8.5" x 11" writing pad included

ST151

Embellishment	Area	50	100	250	500	1000
Imprinted	4"hx4"w	12.13	11.84	11.55	11.26	10.99
Debossed	4"hx4"w	13.23	12.91	12.60	12.29	11.99

5C



**ST150  
TRADITION ZIPPERED PADFOLIO**

13.5"hx10.5"wx1.5"d 300d Polyester /  
Simulated Leather

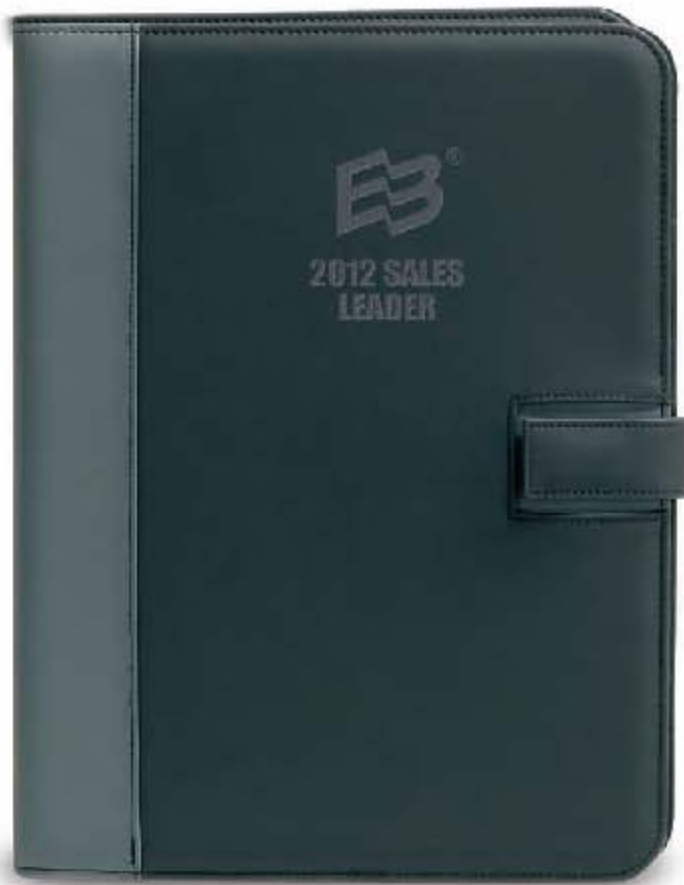
Color: Black

- Zippered closure
- File organization and zippered interior space
- Two interior pen / flash drive loops
- Multiple business card pockets
- 8.5" x 11" writing pad included

ST150

Embellishment	Area	50	100	250	500	1000
Imprinted	4"hx4"w	14.34	13.99	13.65	13.31	12.99
Debossed	4"hx4"w	15.44	15.07	14.70	14.34	13.99

5C



**NEW COLORS**  
Red & Royal



Made with actual Scuba (wetsuit) material!



Strong magnetic flap closure

**ST100  
ROLLICK WRITING PAD**

12.75" h x 10.25" w x .25" d Scuba  
Colors: Black, Red, Royal

- Business card pockets and pen/lash drive loop
- Interior organizer
- 8.5" x 11" writing pad included

ST100BK, ST100RD, ST100RY

Embellishment	Area	50	100	250	500	1000
Imprinted	4" h x 4" w	14.34	13.99	13.65	13.31	12.99
Debossed	4" h x 4" w	15.44	15.07	14.70	14.34	13.99

5C





**ST061  
BANDED PADFOLIO**

12.5"hx10"wX.5"d      Simulated Leather  
Color: Royal, Red, Black

- + A strong band of colored elastic keeps your papers secure and easily accessible
- + Interior organizer includes a pen loop
- + 8.5"x11" writing pad included

ST061RY, ST061RD, ST061BK

Embellishment Area	50	100	250	500	1000
Imprinted 9"hx5"w	14.34	13.99	13.65	13.31	12.99
					5C



**ST002  
WESTPORT WRITING PAD**

12.75" h x 10.25" w x .25" d    Simulated leather/  
Color: Brown                      poly twill

- + Distinctive business style that won't break the bank
- + Business card pockets and pen/flash drive loop
- + Interior organizer
- + 8.5" x 11" writing pad included

ST002

Embellishment Area	50	100	250	500	1000
Imprinted 6" h x 6" w (on fabric only)	14.34	13.99	13.65	13.31	12.99
Debossed 1" h x 4.5" w (on simulated leather trim only)	15.44	15.07	14.70	14.34	13.99 5C



**ST001  
WESTPORT ZIPPERED PADFOLIO**

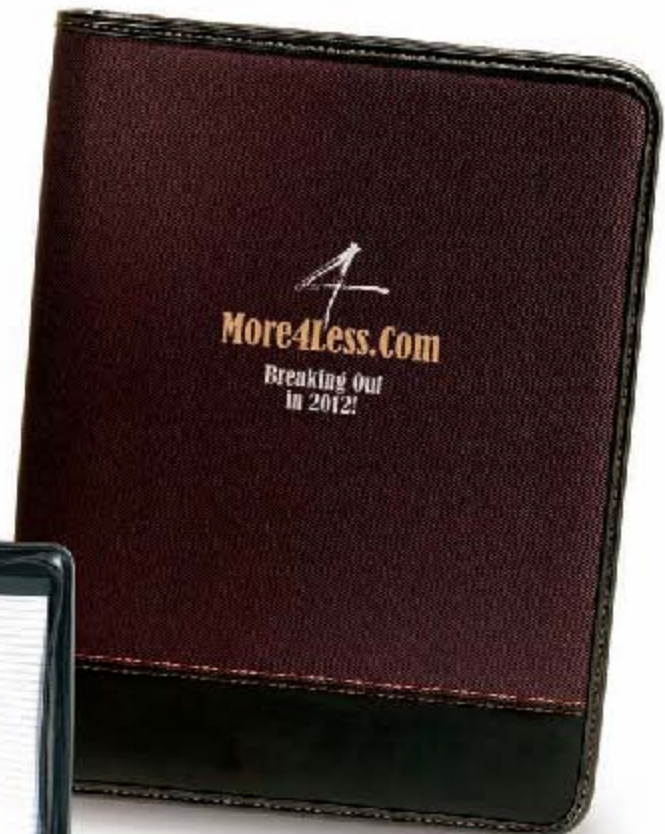
13.5" h x 10.5" w x 2" d    Simulated leather/  
Color: Brown                      poly twill

- + Zippered closure
- + File organization and zippered interior space
- + Two interior pen/flash drive loops
- + Multiple business card pockets
- + 8.5" x 11" writing pad included

ST001

Embellishment Area	50	100	250	500	1000
Imprinted 6" h x 6" w (on fabric only)	16.55	16.14	15.75	15.36	14.99
Debossed 1" h x 4.5" w (on simulated leather trim only)	17.65	17.22	16.80	16.39	15.99

5C





**ST060  
IN-LINE PADFOLIO**

- 12.5"hx10"wx.5"d      Simulated Leather, Scuba  
 Color: Royal, Black, Red
- Integrated pen loop is a stylish part of the exterior design for convenience
  - Interior organizer includes a second pen loop
  - 8.5"x11" writing pad included

ST060RY, ST060BK, ST060RD

Embellishment Area	50	100	250	500	1000
Imprinted 9"hx4.5"w	16.55	16.14	15.75	15.36	14.99

5C



**ST051  
RECYCLED SPIRAL JOTTER**



5.375"hx3.5"wx.625"d  
Color: Natural

- Cover is 100% recycled consumer paper—inside paper is 70% recycled and 30% new
- Includes a pen made with 50% recycled cardboard
- Handy elastic band holds jotter shut when not in use

ST051

Embellishment	Area	100	250	500	1000
Pad Printed*	2"hx2.5"w	1.99	1.90	1.85	1.79
					4C



**Includes Pen**



**Includes Pen**

**ST053  
RECYCLED SPIRAL NOTEPAD**



7.125"hx5.375"wx.5"d  
Color: Natural

- Cover is 100% recycled consumer paper—inside paper is 70% recycled and 30% new
- Includes a pen made with 50% recycled cardboard
- Back is wider and holds pen

ST053

Embellishment	Area	100	250	500	1000
Pad Printed*	2"hx2.5"w	3.09	3.00	2.95	2.89
					4C

\* ST051 & ST053: \$50 (G) for a set of 100, per copy, per color, on all new orders. \$25 (G) for a set of 100, per copy, per color, on all new orders. Pad: area code: \$25 (G) for a set of 100, per copy.



**BG380  
CAMPUS QUICK DRAW PACK**

18"hx14"w 210d Nylon

Colors: Royal, Black, Red

- Silver grommet details
- Braided drawstring cording
- Protective PU corners
- Great for students

BG380RY, BG380BK, BG380RD

Embellishment	Area	50	100	250	500	1000
Imprinted	10.5"hx11"w	4.14	4.04	3.94	3.84	3.75
Embroidered	6.5" diam.	6.35	6.19	6.04	5.89	5.75

5C



**BG382  
STYLE QUICK DRAW PACK**

20"hx16"wx6.5"d 210d Nylon / 420d Polyester

Colors: Red, Black, Royal

- Durable front zippered pocket
- Braided nylon cording
- Grommeted corners
- Convenient and stylish

BG382RD, BG382BK, BG382RY

Embellishment	Area	50	100	250	500	1000
Imprinted	6"hx8"w	4.91	4.79	4.68	4.56	4.45
Embroidered	6" diam.	7.12	6.96	6.78	6.61	6.45

5C





**BG853**  
**THE HOOK DRAWSTRING BACKPACK**

18"hx13.5"w      85gsm non-woven  
 Color: Red, Black, Royal

- Carrying your gear never looked so good
- The exterior pocket is perfect for keys, cell phone or water bottle; a hook and loop tab closure keeps it all inside
- Drawstring straps secure main pouch
- Durable and light weight with a large imprint area



BG853RD, BG853BK, BG853RY

Embellishment	Area	100	250	500	1000
Imprinted	8"hx7"w	2.95	2.89	2.82	2.75
					4C



**BG660  
FEATHERLITE  
QUICK DRAW PACK**

18"hx14"w

80GSM Non-Woven

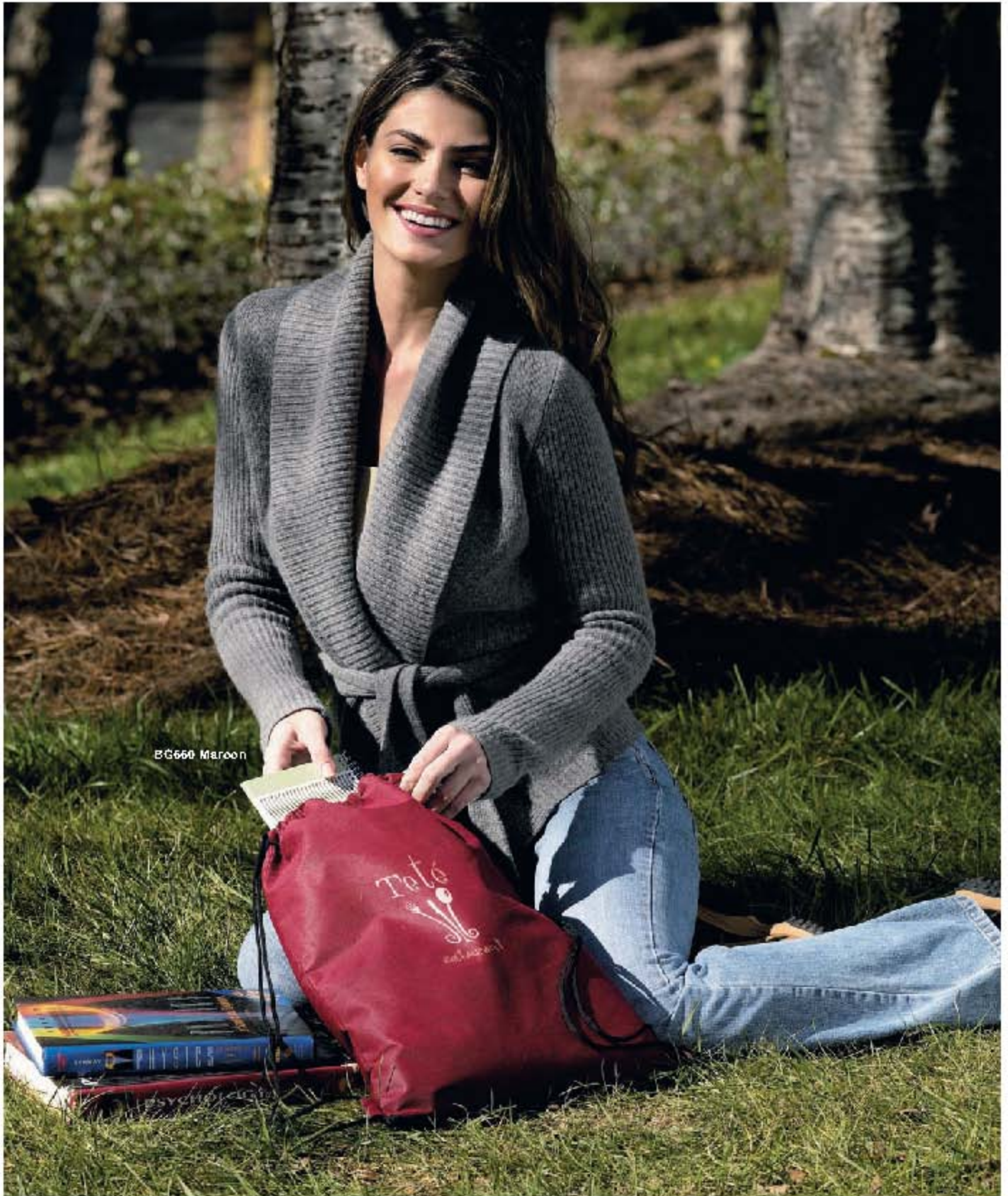
Colors: Maroon, Gray, Red, Royal, Gold, White, Hunter, Kelly Green, Orange, Black, Pink, Light Blue, Navy

- Stylish drawstring closure
- Large imprint area
- Durable and light-weight
- Great gift for any age

BG660MR, BG660GY, BG660RD, BG660RY, BG660GO,  
BG660WH, BG660HU, BG660KL, BG660OR, BG660BK,  
BG660PK, BG660LTBL, BG660NY

Embellishment Area	100	250	500	1000	
Imprinted	10.5"hx11"w	1.78	1.73	1.69	1.65


4C



BG660 Maroon



**BG225  
ACE BACKPACK**

18" h x 14" w x 6" d    600d, 1680d     Ezy PVC, For:  
Colors: Black/Grey

- Perfect size for on the go or back to school
- Front zippered compartment includes organizer with media storage and ear bud port
- Padded mesh shoulder straps for added comfort
- Two side pockets for easy access to water bottles or snacks

**BG225BKGY**

Embellishment Area	50	100	250	500	1000
Imprinted 5" h x 5" w	14.34	13.99	13.65	13.31	12.99
Embroidered 6" diam	16.55	16.14	15.75	15.36	14.99
					5C



**BG677  
FRONT LINE SLING BAG**



Est. B.C. For.

18"hx14.5"wx5"d  
Colors: Royal, Red

600d Polyester  
210d Nylon

- + Modern slim styling conceals a generous main compartment
- + Front zippered pocket and earbud port keep keys, cell phones and music handy
- + Adjustable shoulder strap and top grab handle round this bag out

BG677RY, BG677RD

Embellishment	Area	50	100	250	500	1000
Imprinted	4"hx5"w	12.09	11.79	11.90	11.22	10.95

5C



**BG221  
FLAIR BACKPACK**



Est. B.C. For.

18"hx12.5"wx5"d - 600d, 420d dobby  
Colors: Black/Red, Black/Royal

- + Add some style to your travels
- + Generously sized main compartment is perfect for work or weekend play
- + Handy organizer in front section keeps keys and small items within easy reach
- + Comfortable padded shoulder straps are adjustable

BG221 BKRD, BG221 BKRY

Embellishment	Area	50	100	250	500	1000
Imprinted	3"hx3"w	13.23	12.91	12.60	12.29	11.99
Embroidered	3" diam.	15.44	15.07	14.70	14.34	13.99

5C





**BG570  
TRECK COMPU-PACK**

18"hx12.5"wx9"d 1200d Polyester  
Color: Black

- Padded back and straps for comfort on the go
- Main compartment features a padded suspended laptop pouch, MP3 pocket, ear bud port, and room for files
- Zippered front storage features organizer and enough room for cables/cords
- Integrated side zippers provide quick access to airline tickets or cell phone



10.6" Laptop



31" B.C. Port

**BG570BK**

Embellishment	Area	25	50	100	250	500
Imprinted	4"hx4"w	20.95	20.45	19.95	19.46	18.99
Embroidered	4" diam.	23.17	22.60	22.05	21.51	20.99

5C





**BG284  
TAOS COMPU-PACK**

19"hx13.5"wx5.5"d 840d Polyester / 600d Polyester

Colors: Royal, Black, Red, Hunter

- + Great 2-in-1 design for any type of traveler
- + Main bag features three generous compartments for files or clothing
- + Rear zippered section is easy to access and padded for laptop safety
- + Removable day-pack section includes handy organizer
- + Padded back and shoulder straps ensure comfort



Laptop Prop



Str. Back Pck



BG284RD, BG284RY, BG284BK, BG284HU

Embellishment Area	25	50	100	250	500
Imprinted 4"hx4"w	30.90	30.14	29.41	28.69	27.99
Embroidered 4" diam.	33.10	32.30	31.51	30.74	29.99



**BG583  
THE CITY COMPU-PACK**

17.75"hx12.25"wx4.5"d      Mikrofiber  
Color: Black

- + A trim profile, in durable mikrofiber, sets this compu-pack apart from the crowd
- + Pockets for cord management, files and smaller items keep you organized
- + Padded laptop sleeve is sized to accommodate most 17" computers



-durable



fits 17" laptops

BG583BK

Embellishment Area	25	50	100	250	500
Imprinted 4"hx4"w	29.79	29.07	28.36	27.66	26.99
Embroidered 3" diam.	32.00	31.22	30.46	29.71	28.99

5C



**BGTS01**  
**ALPHA EZ SCAN COMPU-PACK** **NEW!**

17.5" h x 12.5" w x 7.75" d      1680d polyester  
 Color: Black                      420d dobby rip-stop

- Speed through airport security with the greatest of ease
- Dedicated 15" laptop section opens to lay flat on the X-ray belt for speed and convenience through security
- Two additional sections provide cord management and document organization
- Padded shoulder straps and back panel ensure comfort while traveling



rip-stop

BGTS01BK

Embellishment Area	12	25	50	100	250
Imprinted 4" h x 4" w	62.91	61.37	59.88	58.41	56.99
Embroidered 4" h x 4" w	65.11	63.53	61.98	60.46	58.99

5C



**NEW**

**BG852  
THE HOOK TOTE**

16.5"hx15"wx3"d      600d polyester  
Color: Red, Black, Royal

- Generously sized with subtle good looks - The HookTote will grab attention
- The exterior pocket extends across the front of the bag for additional storage, and is secured by a hook and loop tab
- 12" drop handles feature a pen loop for convenience

BG852RD, BG852BK, BG852RY

Embellishment	Area	50	100	250	500	1000
Imprinted	7"hx11"w	6.61	6.45	6.29	6.14	5.99
Embroidered	6" diam.	8.82	8.60	8.39	8.19	7.99
						50



### BG672 LOOP CONVENTION TOTE

18" h x 12" w x 5" d 600d Poly

Colors: Red, Royal

- Stylish color blocking brings out the best in your logo
- Features like exterior pen loops and air mesh straps make conventions a breeze
- Sized to carry catalogs, documents or notebooks with room to spare
- 8.5" drop handles

BG672RD, BG672RY

Embellishment	Area	50	100	250	500	1000
Imprinted	12" h x 6.5" w	7.72	7.53	7.34	7.16	6.99
Embroidered	4" diam.	9.92	9.68	9.45	9.21	8.99

5C



See the matching Loop Business Case on page 16.



### BG475 TERRA VERDE TOTE



Eco-friendly material

15.75" h x 19.5" w x 6.5" d 500gsm Polypropylene/  
Color: Black, Gray Simulated Leather

- Meet the eco-friendly bag you'll WANT to carry
- Felted non-woven polypropylene has been styled to give you an eco-friendly option in the office
- Generously sized to carry your files, computer, and even your gym shoes

BG475BK, BG475GY

Embellishment	Area	50	100	250	500	1000
Imprinted	8" h x 10" w	17.11	16.89	16.28	15.89	15.50
Embroidered	3.5" h x 5" w	19.32	18.85	18.39	17.94	17.50

5C



See the matching Terra Verde Messenger on page 17.



**BG461  
HANOVER TOTE**

18"hx16"wx5"d      20 oz. cotton canvas,  
Color: Black      Leather

- Heavy canvas construction is as beautiful as it is durable
- 12" soft webbed cotton drop handles
- Richly dyed leather accents round out this handsome tote

BG461BK

Embellishment	Area	25	50	100	250	500
Imprinted	7"hx11"w	38.62	37.68	36.76	35.86	34.99
Embroidered	6" diam.	40.83	39.88	38.86	37.91	36.99

5C

**BG460  
REEF TOTE**



12.5"hx17"wx5"d      12 oz. cotton canvas  
Color: Black, Red, Royal

- Generously sized in 12 oz cotton this tote is the perfect go to shopping bag
- Rivets accent the handy front slot pocket
- 8" drop handles are attractively accented with a pop of color

BG460BK, BG460RD, BG460RY

Embellishment	Area	50	100	250	500	1000
Imprinted	4"hx4"w	11.08	10.76	10.50	10.24	9.99
Embroidered	2.5"hx1.5"w	13.23	12.91	12.60	12.29	11.99

5C





**BG462  
BAR HARBOR TOTE**

12.5"hx20.5"wx4"d 16 oz. canvas  
Color: Black

- An expansive main section, and three front pockets, take this bag to the beach and beyond
- Heavy cotton canvas construction is soft and durable
- 14" drop handles are accented to match the base for a nautical look

BG462 BK

Embellishment	Area	50	100	250	500	1000
Imprinted	4"hx5"w	22.07	21.53	21.00	20.49	19.99
Embroidered	2.25" diam	24.27	23.68	23.10	22.54	21.99

5C

**BG430  
VALUE TOTE**

15" h x 15" w  
Colors: Royal, Red, Navy, Natural, Black

- Light-weight canvas body
- Quality material and finish
- Canvas handles with 12" drop

BG430RY, BG430RD, BG430NY, BG430NL, BG430BK

Embellishment	Area	50	100	250	500	1000
Imprinted	10" h x 10" w	3.26	3.18	3.10	3.02	2.95
Embroidered	6" diam.	5.46	5.33	5.20	5.07	4.95

5C



Eco-friendly material

4oz Canvas



**BG440  
SPOTLIGHT TOTE**

15" h x 14" w x 4" d  
Colors: Red, Navy, Royal, Black

- Open tote for easy access
- Quality material and finish
- Extra wide, reinforced web handles with 12" drop
- Gusseted for extra capacity

BG440RD, BG440NY, BG440RY, BG440BK

Embellishment	Area	50	100	250	500	1000
Imprinted	10" h x 10" w	4.40	4.30	4.19	4.09	3.99
Embroidered	6" diam.	6.61	6.45	6.29	6.14	5.99

5C



Eco-friendly material

8oz Canvas







**BG410  
SANTA FE TOTE**



12"hx15"wx4"d 8oz Canvas Trim/4oz Canvas Body  
Colors: Red, Chocolate, Orange, Black, Navy, Sage

- Light-weight dyed canvas body with natural trim
- Zippered closure
- Cotton webbed handles with 8.5" drop

BG410RD, BG410CH, BG410OR, BG410BK, BG410NY,  
BG410SG

Embellishment	Area	50	100	250	500	1000
Imprinted	6"hx7"w	5.51	5.37	5.24	5.11	4.99
Embroidered	5" diam.	7.72	7.53	7.34	7.16	6.99

5C



**BG8860  
CLASSIC COTTON TOTE**



16"hx15"w 6oz Canvas  
Colors: Red, Black, Royal, Navy, Natural

- Natural cotton canvas tote in a popular 6 oz weight
- Open top is perfect for conventions and meetings
- 12" drop handle

BG8860RD, BG8860BK, BG8860RY, BG8860NY, BG8860NL

Embellishment	Area	50	100	250	500	1000
Imprinted	10"hx10"w	3.86	3.77	3.68	3.59	3.50
Embroidered	6" diam.	6.07	5.92	5.78	5.64	5.50

5C





**BG675  
NON-WOVEN SLING TOTE**



12.25" h x 16" w x 2.5" d 80 gsm non-woven poly propylene  
Colors: Green, Black, Red, Pink, Royal

- Eco-friendly tote can be washed and reused for years then recycled
- Stylish wrap design provides handy exterior pocket for shopping lists, keys, or cell phone
- Fold it up and pack it to use running errands, or carry extra items home from vacation

BG675GN, BG675BK, BG675RD, BG675PK, BG675RY

Embellishment	Area	50	100	250	500	1000
Imprinted	6" h x 9" w	3.86	3.77	3.68	3.59	3.50

5C



**BG200  
VISION TOTE**

12"hx15"wx4"d Vinyl

Colors: White, Red, Royal

- + Heavy clear vinyl body
- + Zippered closure
- + Woven nylon handles

BG200WH, BG200RD, BG200RY

Embellishment	Area	50	100	250	500	1000
Imprinted	5"hx5"w	5.24	5.12	4.99	4.87	4.75
						5C



**BG715  
NON-WOVEN  
4-BOTTLE WINE TOTE**

11" h x 7" w x 6.25" d  
Colors: Maroon, Black



80 gsm non-woven polypropylene

- + Perfect for all you shop for: wine, water, oil, vinegar, sparkling juice, etc.
- + Divider and bottom support keep the bag stable and bottles protected
- + Made from non-woven polypropylene, this tote is durable, washable and recyclable

BG715MR, BG715BK

Embellishment	Area	50	100	250	500	1000
Imprinted	5"hx5"w	2.76	2.69	2.63	2.55	2.50

5C

**BG730  
NON-WOVEN  
2-BOTTLE WINE TOTE**

11" h x 7" w x 3.75" d  
Colors: Black, Maroon



80 gsm non-woven polypropylene

- + Use it to shop, or pack with wine and tie with a bow and you'll have the perfect gift!
- + Perfectly sized to carry bottles of all types: wine, water, oil, vinegar, sparkling juice, etc.
- + Divider and bottom support keep the bag stable and bottles protected
- + Durable, washable and recyclable

BG730BK, BG730MR

Embellishment	Area	50	100	250	500	1000
Imprinted	5"hx5"w	2.59	2.53	2.47	2.41	2.35

5C





**BG671  
NON-WOVEN SUPER SHOPPER**



13.25" h x 12.25" w x 8.25" d      80 gsm non-woven poly propylene

Colors: Royal, Green, Red

- Eco-friendly non-woven design can be used over and over for years then recycled
- The perfect reusable shopper for all of your errands
- Durable and light-weight, folds flat for easy storage in your car or pantry
- Reinforced, removable bottom board keeps the shopper open and stable for easy packing

BG671RY, BG671GN, BG671RD

Embellishment	Area	50	100	250	500	1000
Imprinted	5" h x 3.5" w	2.48	2.42	2.36	2.31	2.25

5C



**BG600  
SHOW TOTE**



16" h x 19" w x 5" d      80 gsm non-woven poly propylene

Colors: Black, Red, Royal, Navy

- Gusseted for extra capacity
- Heavy-duty zippered closure
- Exterior pocket with velcro closure
- Light-weight but incredibly sturdy
- Non-woven handles with 16" drop

BG600BK, BG600RD, BG600RY, BG600NY

Embellishment	Area	50	100	250	500	1000
Imprinted	7" h x 11" w	3.04	2.96	2.89	2.82	2.75

5C





**BG126  
LUNCH SACK NON-WOVEN COOLER**

9" h x 7" w x 4" d      100gsm Non-Woven Polypropylene  
Colors: Red, Navy, Yellow, Black, Royal

- An affordable retro-lunch sack style perfect for everyday use
- Thermo lining with a hook and loop closure
- Made of recyclable material
- Convenient grab handle and front slot pocket

BG126RD, BG126NY, BG126YL, BG126BK, BG126RY

Embellishment	Area	50	100	250	500	1000
Imprinted	4"hx5"w	2.74	2.67	2.61	2.54	2.48
						5C



**BG735  
NON-WOVEN  
INSULATED SHOPPING TOTE**



13.25" h x 12.25" w x 8.25" d      80 gsm non-woven polypropylene  
Colors: Red, Royal, Black

- Generously sized insulated shopping tote keeps perishable items cold
- Handles sized to carry over the shoulder or in your hand
- Zippered closure helps to maintain inner temperature
- Handy front slot pocket

BG735RD, BG735RY, BG735BK

Embellishment	Area	50	100	250	500	1000
Imprinted	4"hx4"w	3.85	3.77	3.68	3.59	3.50
						5C





Eco-friendly material

**BG127**  
**VALUE NON-WOVEN COOLER**

5.5" h x 8" w x 5.5" d 100gsm Non-Woven Polypropylene  
Colors: Royal, Black, Yellow, Red, Navy

- + Value cooler perfectly sized to carry lunches or drinks to the game
- + Zippered closure with a thermo lining
- + Made of recyclable materials
- + Front slot pocket and grab handle

BG127RY, BG127BK, BG127YL, BG127RD, BG127NY

Embellishment	Area	50	100	250	500	1000
Imprinted	2" h x 5" w	2.74	2.67	2.61	2.54	2.48

5C



**BG737**  
**INSULATED SHOPPING TOTE WITH EXTENDED POCKET**

13.25" h x 12.25" w x 8.25" d 80gsm non-woven polypropylene  
Colors: Red, Royal, Black



Eco-friendly material

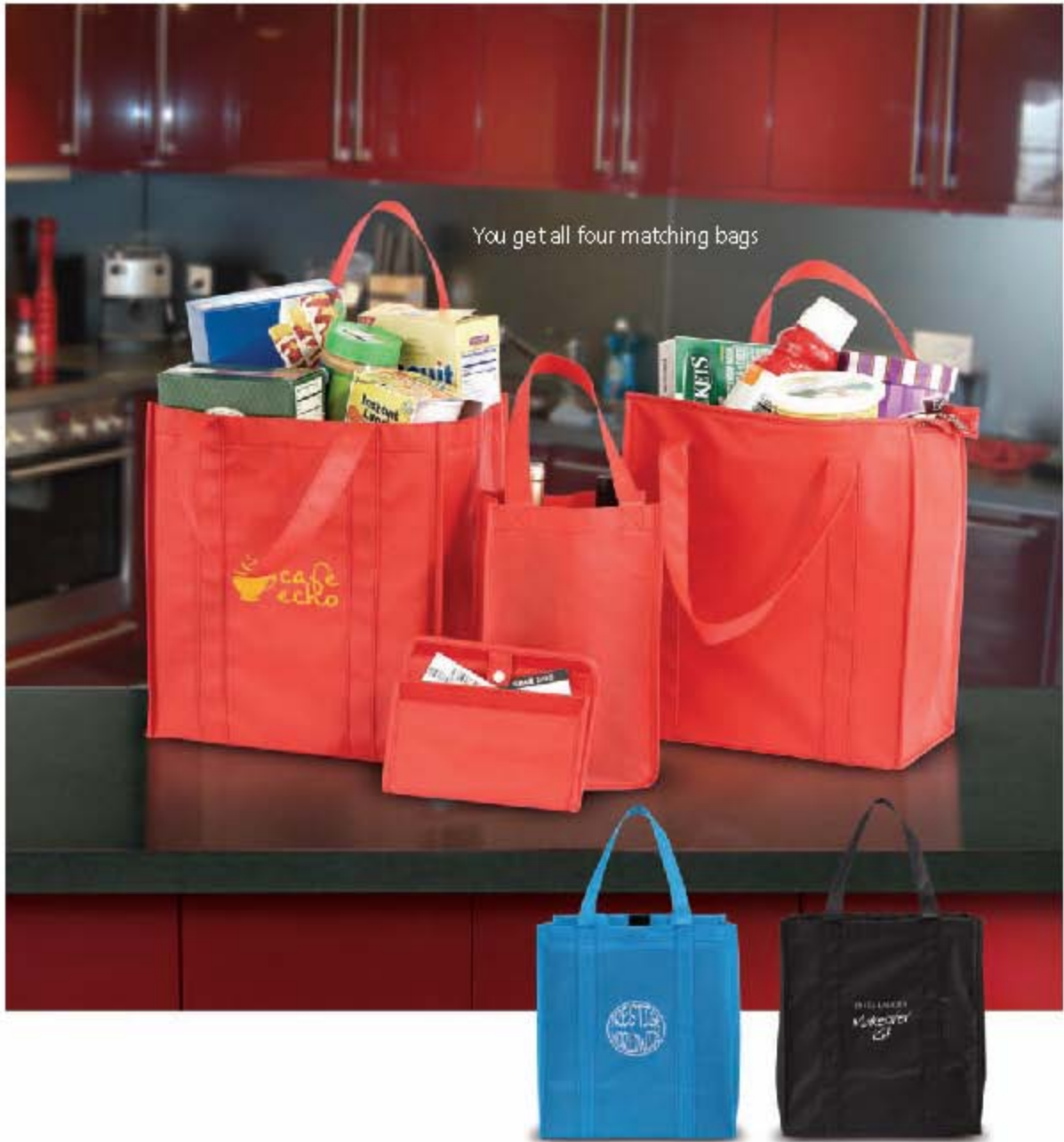
- + Generously sized insulated shopping tote keeps perishable items cold
- + Handles sized to carry over the shoulder or in your hand
- + Zippered closure helps to maintain inner temperature
- + Handy front slot pocket

BG735RD, BG735RY, BG735BK

Embellishment	Area	50	100	250	500	1000
Imprinted	6" h x 7" w	3.86	3.77	3.68	3.59	3.50

5C





You get all four matching bags



Eco-friendly material

**BG745  
4-IN-1 SHOPPING KIT**

13.25" h x 12.25" w x 8.25" d  
(Largest Bag)

80 gm non-woven  
polypropylene

Colors: Royal, Red, Black

- Reuse, recycle and help reduce unnecessary waste with this kit
- Kit includes shopping tote, insulated shopping tote, coupon organizer and 2-bottle wine tote
- Non-woven polypropylene can be washed and reused for years, then recycled

BG745RY, BG 745RD, BG745BK

Embellishment	Area	50	100	250	500	1000
Imprint (shopping tote)	5" h x 3.5" w	6.95	6.78	6.62	6.46	6.30
						5C





You get all five matching bags



All bags fold easily into small zippered bag.

**BG 740**  
**5-IN-1 TRAVEL KIT**



Eco-friendly material

11" h x 8" w x 3.5" d 80gsm non-woven polypropylene

Color: Black

- What traveler couldn't use some economical storage options?
- Kit includes laundry bag, shoe bag, toiletry pouch, small, zippered item/electronics bag, and a tote bag
- Made from non-woven polypropylene, this kit is lightweight, durable, washable and recyclable

BG740BK

Embellishment	Area	50	100	250	500	1000
Imprinted (small zippered bag)	3" h x 3" w	8.82	8.60	8.39	8.19	7.99

5C



**NEW!**

**BG8000  
MICRO-MINK SHERPA BLANKET**

50" X 60"      100% Polyester  
Colors: Sage, Navy, Camel, Black, Maroon,  
Chocolate, Gray

- Wrap yourself in spa like luxury
- Supersoft micro mink on one side, with faux lambswool on the other, pampers you like no other blanket can
- With seven rich colors to choose from, you might want one for each room in the house

BG8000G, BG8000N, BG8000M, BG8000B,  
BG8000R, BG8000C, BG8000Y

Embellishment	Area	24	48	100	250
Embroidered	6.5" diam.	35.95	34.95	33.95	31.95
					4C



**BG8800  
MICRO-PLUSH FLEECE BLANKET**

50" X 60" 100% Polyester  
Colors: See color key.

- + Ultra soft and silky our coral-fleece blanket is sure to please
- + Don't let its pretty looks fool you, coral-fleece is durable and won't pill with use
- + Choose from 12 vibrant colors



BG8800BK, BG8800CH, BG8800GY, BG8800HU,  
BG8800MR, BG8800NT, BG8800NY, BG8800PK,  
BG8800PU, BG8800RD, BG8800RY, BG8800TN

Embellishment	Area	48	100	250	500
Embroidered	6.5" diam	23.95	22.95	21.95	20.95
					4C

See Decorating Guide on page 79, and General Information on page 80.

In our experience, some logos as brodered onto blankets require additional stitches. An estimated stitch count is recommended, and can be obtained by contacting Customer Service.



Handy carry straps for any blanket only \$1.25c

Strap-B



**BG7084  
JERSEY FLEECE BLANKET**

54" X 84" 80% Cotton, 20% Polyester  
Color: Heather

- Your favorite sweatshirt doesn't stand a chance against this super soft blanket
- Oversized to cover you completely, or share with a friend, it's perfect for watching TV or extra warmth on a bed

BG7084GY

Embellishment	Area	24	48	100	250
Embroidered	6.5" diam.	32.95	31.95	30.95	29.95
					4C

See Decorating Guide on page 79, and General Information on page 80.

In our experience, some logos embroidered onto blankets require additional stitches. An estimated stitch count is recommended, and can be obtained by contacting Customer Service.



**NEW!**

**BG7060  
JERSEY FLEECE THROW**

50" X 60" 80% Cotton, 20% Polyester  
Colors: See color key.

- Super soft, just like your favorite sweatshirt!
- The cotton/poly blend makes this the perfect year round throw
- Perfectly sized to use at home, or pack along

BG7060BK, BG7060GY, BG7060HU, BG7060NY, BG7060RD, BG7060RY

Embellishment	Area	24	48	100	250
Embroidered	6.5" diam.	24.95	29.95	22.95	21.95
					4C



Blanket folds for easy carrying



**BG6600**  
**FLEECE/NYLON PICNIC BLANKET**

50" X 60" 100% Polyester  
Colors: Red, Navy, Royal, Charcoal, Black, Maroon, Hunter, Red Plaid, Blue Plaid

- + Not just for picnicking, you'll reach for this blanket time after time
- + Soft polar fleece on one side keeps you warm, and water resistant poly shell on the other keeps you dry
- + Easy carry design folds up for easy packing or storing

BG6600RD, BG6600NY, BG6600RY, BG6600GY, BG6600BK, BG6600MR, BG6600HU, BG6600RDP, BG6600BLPD

Embellishment	Area	48	100	250	500
Embroidered (on pocket)	6" diam.	21.95	20.95	19.95	18.95
					4C

See Decorating Guide on page 79, and General Information on page 80.

In our experience, some logos as embroidered onto blankets require additional stitches. An estimated stitch count is recommended, and can be obtained by contacting Customer Service.



**BG5500  
FLEECE THROW**

50" X 60" 100% Polyester  
Colors: See color key.

- + Warm luxurious polar fleece in every color of the rainbow!
- + This durable anti-pill fleece will keep you snug for years to come
- + Matching whipstitched edges finish this throw beautifully

BG5500CH, BG5500DKGY, BG5500GY, BG5500HU, BG5500MR, BG5500BK,  
BG5500NT, BG5500NY, BG5500OR, BG5500PK, BG5500PU, BG5500RD,  
BG5500RY, BG5500TN, BG5500YL

Embellishment	Area	48	100	250	500
Embroidered	6.5" diam.	13.95	12.95	11.95	10.95

4C





**BG3300  
PROMO FLEECE THROW**

50" X 60" 100% Polyester  
Colors: Purple, Orange, Hunter, Maroon, Cream,  
Navy, Pink, Gray, Black, Red, Yellow, Royal

- Exceptionally soft brushed polar fleece is as attractive as it is warm
- The edges of this blanket feature a lovely whipstitch to finish the look
- Generously sized, this throw will keep anyone toasty

BG3300PU, BG3300OR, BG3300HU, BG3300MR, BG3300CM, BG3300NY,  
BG3300PK, BG3300GY, BG3300BK, BG3300RD, BG3300YL, BG3300RY

Embellishment	Area	48	100	250	500
Embroidered	6.5" diam.	12.95	11.95	10.95	9.95

4C





**BG126  
LUNCH SACK NON-WOVEN COOLER**

9"hx7"wx4"d 100gsm Non-Woven Polypropylene  
Colors: Red, Navy, Yellow, Black, Royal

- An affordable retro-lunch sack style perfect for everyday use
- Thermo lining with a hook and loop closure
- Made of recyclable materials
- Convenient grab handle and front slot pocket

BG126RD, BG126NY, BG126YL, BG126BK, BG126RY

Embellishment	Area	50	100	250	500	1000
Imprinted	4"hx5"w	2.74	2.67	2.61	2.54	2.48

5C



**BG127  
VALUE NON-WOVEN COOLER**

5.5"hx8"wx5.5"d 100gsm Non-Woven Polypropylene  
Colors: Royal, Black, Yellow, Red, Navy

- Value cooler perfectly sized to carry lunches or drinks to the game
- Zippered closure with a thermo lining
- Made of recyclable materials
- Front slot pocket and grab handle

BG127RY, BG127BK, BG127YL, BG127RD, BG127NY

Embellishment	Area	50	100	250	500	1000
Imprinted	2"hx5"w	2.74	2.67	2.61	2.54	2.48

5C





**BG735  
NON-WOVEN  
INSULATED SHOPPING TOTE**

13.25" h x 12.25" w x 8.25" d      80gsm non-woven  
Colors: Red, Royal, Black      polypropylene

- + Generously sized insulated shopping tote keeps perishable items cold
- + Handles sized to carry over the shoulder or in your hand
- + Zippered closure helps to maintain inner temperature
- + Handy front slot pocket

BG735RD, BG735RY, BG735BK

Embellishment Area	50	100	250	500	1000
Imprinted 4" h x 4" w	3.86	3.77	3.68	3.59	3.50
					5C



**BG139  
COMPANION COOLER**

10" h x 8.75" w x 6.5" d Neoprene

Colors: Red, Royal, Black

- + Sporty neoprene cooler is perfect for work and play
- + Leak proof, insulated, main compartment holds up to 6 twelve-oz. cans
- + Front pocket for accessory or condiment storage

BG139BK, BG139RY, BG139RD

Embellishment	Area	50	100	250	500	1000
Imprinted	2" h x 4" w	12.13	11.84	11.55	11.26	10.99

5C



**BG150  
DAY HIKE COOLER**

15" h x 12" w x 7" d Color-Washed Nylon

Colors: Red, Gray, Royal

- + Unique color-washed nylon body
- + Adjustable padded backpack straps
- + Three exterior zippered compartments
- + Exterior water bottle pocket & zippered closure

BG150RD, BG150GY, BG150RY

Embellishment	Area	50	100	250	500	1000
Imprinted	3" h x 5" w	17.65	17.22	16.80	16.39	15.99
Embroidered	3" diam.	19.86	19.37	18.90	18.44	17.99

5C

Cool material sets this cooler apart



**BG159  
CELEBRATION BUCKET COOLER**

12" h x 13" Round Bottom x 18" Round Top 70d Nylon  
Colors: Royal, Red, Black

- + Perfect for tailgating, trips to the beach, or backyard grilling
- + Attached bottle opener won't get lost in all the fun
- + Front pocket for accessories

BG159RY, BG159RD, BG159BK

Embellishment	Area	50	100	250	500	1000
Imprinted	4" h x 4" w	16.01	15.61	15.23	14.86	14.50
Embroidered	4" diam.	18.21	17.77	17.34	16.91	16.50

5C

**BG300  
ROLLING COOLER**

14.5" h x 12" w x 7" d 70d Nylon

- + 24-can capacity
- + Telescoping handle extends to 21.25"
- + Wheels help transport heavy picnic items with ease

BG300RY, BG300RD

Embellishment	Area	50	100	250	500	1000
Imprinted	4" h x 4" w	22.07	21.53	21.00	20.49	19.99

5C



See Decorating Guide on page 79, and General Information on page 80.



*Ice River Coolers* are truly the next generation in portable cooling. The **FLX-7** technology used in these state-of-the-art bags allows for longer cold segmentation which means contents stay colder, longer.

With a variety of styles to choose from, the move to the *Ice River System* is a smart decision for you and your customers.

Have a look and see if you don't agree!



**BG320**  
**ICE RIVER SPEAKER COOLER**


12" h x 11.5" w x 7" d Rip-Stop Nylon/600d/1680d  
 Colors: Red, Black, Royal

- 18-can capacity
- Water-resistant speaker / MP3 pocket keeps your electronics protected
- Removable speakers provide music wherever you go
- Speakers require 4 AAA batteries - not included
- Generous side mesh pockets keep smaller items within easy reach

BG320RD, BG320BK, BG320RY

Embellishment	Area	25	50	100	150	250
Imprinted	5" h x 5" w	33.10	32.30	31.51	30.74	29.99
Embroidered	3" diam.	35.31	34.45	33.61	32.79	31.99

5C

mp3 player not included


**BG157**  
**ICE RIVER 6-CAN COOLER**


6.5" h x 9.25" w x 6" d Rip-Stop Nylon/600d/1680d  
 Colors: Black, Red, Royal

- 6-can capacity
- Adjustable shoulder strap
- Mesh side pockets for easy storage
- Great size for a "brown bag" lunch

BG157BK, BG157RD, BG157RY

Embellishment	Area	50	100	250	500	1000
Imprinted	4" h x 4" w	13.23	12.91	12.60	12.29	11.99

5C





**BG134  
ICE RIVER 9-CAN COOLER**

10" h x 9.5" w x 7" d Rip-Stop Nylon/600d/1680d

Colors: Red, Royal

- + 9-can capacity
- + Padded adjustable shoulder strap
- + Generous side mesh pockets keep smaller items within easy reach

BG134RD, BG134RY

Embellishment	Area	25	100	150	250	500
Imprinted	4"hx4"w	17.65	17.22	16.80	16.39	15.99
Embroidered	2.5"hx2"w	19.86	19.37	18.90	18.44	17.99

5C



**BG145  
ICE RIVER BACKPACK COOLER**

13.25" h x 12" w x 6" d Rip-Stop Nylon/600d/1680d

Colors: Royal, Red

- + 18-can capacity
- + Generous side pockets keep small items handy
- + Padded shoulder straps and padded back panel for added comfort

BG145RY, BG145R

Embellishment	Area	25	50	100	150	250
Imprinted	2"hx4"w	24.27	23.88	23.10	22.54	21.99
Embroidered	2"hx3"w	26.48	25.88	25.20	24.59	23.99

5C







**BG305**  
**ICE RIVER ROLLING COOLER**



15" h x 14" w x 10" d      Rip-Stop Nylon/600d  
 Colors: Red, Royal, Black

- 54-can capacity (34-can capacity with 3 bottles of wine)
- Padded side handles for easy lifting
- Telescoping handle extends to 24.5" and locks to allow for easy maneuvering
- Side zippered pockets are perfect for carrying condiments & utensils
- Soft interior wine sleeves keep bottles protected & up-right and fold flat when not in use

BG305RD, BG305RY, BG305BK

Embellishment	Area	25	50	100	150	250
Imprinted	5" h x 5" w	50.76	49.53	48.32	47.14	45.99
Embroidered	4" diam.	52.97	51.68	50.42	49.19	47.99
						50



**BG330  
ICE RIVER SEAT COOLER**

14.5"hx11" diameter Rip-Stop Nylon/600d/1680d  
Colors: Royal, Camo, Black

- + A unique Ice River cooler design that doubles as a portable seat.
- + 12-can capacity
- + Adjustable padded shoulder strap
- + Folds flat when not in use
- + Estimated weight limit - 225 lbs.

BG330RY, BG330CM, BG330BK

Embellishment	Area	25	100	150	250	500
Imprinted	3.5"hx3.5"w	24.27	23.68	23.10	22.54	21.99
Embroidered (6 n patch)	3" diam.	26.48	25.83	25.20	24.59	23.99 5C



To see VIDEO of the BG330 scan this QR code with your mobile device



**BG149  
ICE RIVER 20-CAN COOLER**

11" h x 13.25" w x 6.5" d Rip-Stop Nylon/600d/1680d  
Colors: Black, Royal, Red

- 20-can capacity
- Side zippered pockets are perfect for carrying condiments and utensils
- Adjustable padded shoulder strap is removable for convenience
- Comfort grip handle for easy lifting

BG149BK, BG149RY, BG149RD

Embellishment	Area	25	100	150	250	500
Imprinted	5" hx5" w	27.58	26.91	26.26	25.61	24.99
Embroidered	3" diam.	29.79	29.07	28.36	27.66	26.99

5C



**BG340  
CAMO COOLER**

10.5" h x 20.5" w x 12.5" d Rip-Stop Nylon/600d/1680d  
Color: Black, Camo

- The perfect cooler for all your outdoor activities
- Hidden backpack straps for hands free carrying
- Numerous pockets help to organize your camping and/or sporting supplies
- Generous main compartment has a 30-can capacity

BG340BK, BG340CM

Embellishment	Area	25	50	100	150	250
Imprinted	3" hx11" w	46.35	45.22	44.12	43.04	41.99
Embroidered	4" hx6.5" w (front pocket)	48.56	47.37	46.22	45.09	43.99

5C



To see VIDEO of the BG340 scan this QR code with your mobile device





**BG315  
ICE RIVER GRILL COOLER**

7.25" h x 11.5" dia. Rip-Stop Nylon/600d/1680d  
Colors: Red, Royal

- Perfect size for hamburgers and hotdogs – or 7 cans of your favorite drink
- Adjustable padded shoulder strap is removable for convenience
- Grill nests conveniently within cooler bag for easy transport and storage

BG315RD, BG315RY

Embellishment	Area	25	50	100	150	250
Imprinted	3.5"hx3.5"w	31.90	31.12	30.36	29.62	28.90
Embroidered	3" diam.	34.11	33.28	32.46	31.67	30.90

5C

**NEW!**

**BG6600  
FLEECE/NYLON PICNIC BLANKET**

50" X 60" 100% Polyester  
Colors: Red, Navy, Royal, Charcoal, Black, Maroon, Hunter, Red Plaid, Blue Plaid

- + Not just for picnicing, you'll reach for this blanket time after time
- + Soft polar fleece on one side keeps you warm, and water resistant poly shell on the other keeps you dry
- + Easy carry design folds up for easy packing or storing

BG6600RD, BG6600NY, BG6600RY, BG6600DG, BG6600BK, BG6600MR, BG6600HU, BG6600RDPD, BG6600BLPD

Embellishment	Area	48	100	250	500
Embroidered	6" diam.	21.95	20.95	19.95	18.95
(in pocket)					4C



Blanket folds for easy carrying



**BG268  
TRAVEL CHAIR**

34"hx35"wx20"d Nylon  
Colors: Royal, Black, Red

- + Great for picnics, sporting events, etc.
- + Travel case included
- + Beverage holder and utility pocket
- + Folds for easy carry/storage
- + Estimated weight limit 225 lbs.

BG268RY, BG268BK, BG268RD

Embellishment	Area	50	100	250	500	1000
Imprinted	2.5"hx8"w	23.17	22.60	22.05	21.51	20.99
						5C





Eco-friendly material

**BG8805  
BARREL DUFFEL**

10"hx18"wx10"d 600d Polyester (50% Recycled)  
Colors: Hunter, Red, Royal, Black, Maroon, Navy, Orange

- + Value priced to fit any budget
- + Features size zippered pocket, adjustable shoulder strap, and convenient grab handles
- + Made with 50% recycled material, this bag is ready for road trips

BG8805HU, BG8805RD, BG8805RY, BG8805BK, BG8805MR, BG8805NY, BG8805OR

Embellishment	Area	50	100	250	500	1000
Imprinted	6"hx6"w	6.61	6.45	6.29	6.14	5.99
Embroidered	6"hx6"w	8.82	8.60	8.39	8.19	7.99

5C



Eco-friendly material

**BG8806  
VALUE SPORTS DUFFEL**

23.5"h x 11.5"w x 11"d 600d Polyester (50% Recycled)  
Colors: Hunter, Red, Royal, Black, Maroon, Navy, Orange

- + Budget friendly and generously sized for any sports fan
- + Made with 50% recycled material, it's a bag you can feel good about carrying
- + Front zippered accessories pocket and adjustable shoulder strap round out this great buy

BG8806HU, BG8806RD, BG8806RY, BG8806BK, BG8806MR, BG8806NY, BG8806OR

Embellishment	Area	50	100	250	500	1000
Imprinted	4"hx5"w	12.13	11.84	11.55	11.26	10.99
Embroidered	3" diam.	14.34	13.99	13.65	13.31	12.99

5C





**BG263**  
**TROOPER DUFFEL**

12" h x 18" w x 10" d      600d Polyester  
Colors: Red, Hunter, Black, Royal

- Generous main zippered compartment
- Large front zippered pocket
- Adjustable shoulder strap is detachable

BG263RD, BG263HU, BG263BK, BG263RY

Embellishment	Area	50	100	250	500	1000
Imprinted	4" h x 5" w	12.13	11.84	11.55	11.26	10.99
Embroidered (top only)	4" diam.	14.34	13.99	13.65	13.31	12.99
						5C



**BG270  
TRAINER DUFFEL**

13"hx20"wx12"d 600d Polyester  
Colors: Red, Royal, Black

- Numerous zippered & mesh exterior and interior pockets
- Ventilated shoe storage section
- Woven handles with padded cover
- Detachable, padded shoulder strap

BG270RD, BG270RY, BG270BK

Embellishment	Area	50	100	250	500	1000
Imprinted	4"hx4"wx	23.17	22.60	22.05	21.51	20.99
Embroidered	4" diam.	25.38	24.76	24.15	23.56	22.99
(top of bag)						5C



**BG264  
GAME DAY DUFFEL**

10"hx20"wx10"d 600d Polyester  
Colors: Royal, Black, Red

- Zippered and mesh pockets for all your gear
- Ventilated shoe storage section
- 20" Woven handles with padded cover
- Detachable, padded shoulder strap

BG264RY, BG264BK, BG264RD

Embellishment	Area	50	100	250	500	1000
Imprinted	4"hx4"wx	17.65	17.22	16.80	16.39	15.99
Embroidered	4" diam.	19.85	19.37	18.90	18.44	17.99
(top only)						5C





### BG271 VELOCITY SPORT DUFFEL

12.5"hx23.5"wx12"d      600d Polyester /  
210d Dobby nylon

Colors: Royal, Black, Red

- + Spacious main compartment holds all your sport gear
- + Integrated bottle holder is insulated to keep beverages cold
- + Zippered pockets on both ends extend storage (one end contains a shoe tunnel)
- + Front pocket keeps small items handy

BG271RY, BG271BK, BG271RD

Embellishment	Area	25	50	100	250	500
Imprinted	2.5"hx6"w	22.07	21.53	21.00	20.49	19.99
Embroidered	3" diam.	24.27	23.68	23.10	22.54	21.99

5C



**BG277**  
**VELOCITY ROLLING DUFFEL**

12"hx26"wx14.75" d 600d Polyester  
Colors: Black, Red, Royal

- Large main compartment is perfect for "over-packing"
- Drop-bottom lower section provides added storage
- Two top-loading end compartments are perfect for shoes
- Telescoping handle (extends to 16") and wheels keep this duffel mobile

BG277BK, BG277RD, BG277RY

Embellishment	Area	12	25	50	100	250
Imprinted	3"hx13"w	50.76	49.53	48.32	47.14	45.99
Embroidered	6.5" diam.	52.97	51.68	50.42	49.19	47.99

50



**BG275  
SCOUT DUFFEL**

14"hx26"wx13"d 1680d Polyester  
Colors: Royal, Black, Red

- Numerous large zippered exterior and interior pockets
- Mesh quick-stow pockets
- 20" Woven handles with padded cover
- Detachable shoulder strap

BG275RY, BG275BK, BG275RD

Embellishment	Area	12	25	50	100	250
Embroidered	3"hx4"w	44.14	48.06	42.01	40.99	39.99
						5C



**BG276  
SCOUT ROLLING DUFFEL**

14"hx26"wx13"d 1680d Polyester  
Colors: Royal, Black, Red

- Telescoping pull handle (extends to 15") with inline skate wheels
- Numerous large zippered exterior and interior pockets
- 20" Woven handles with padded cover
- Detachable shoulder strap

BG276RY, BG276BK, BG276RD

Embellishment	Area	6	12	25	50	100
Embroidered	3"hx4"w	48.56	47.37	46.22	45.09	43.99
						5C

**BG960  
BRAVO DOPP KIT**

15" h x 12" w x 3.5" d    600d Polyester  
Color: Black

- + Hanging Dopp kit is perfect for the business or weekend traveler
- + Main compartment is spacious, and includes elasticized pockets to hold toiletry items in place
- + Removable mesh pocket allows for additional portability

**BG960BK**

Embellishment	Area	50	100	250	500	1000
Imprinted	4" h x 4" w	8.00	7.81	7.62	7.43	7.25
Embroidered	3" diam	10.21	9.95	9.72	9.48	9.25

5C



**BG951  
MICROFIBER TRAVEL KIT**

5.5" h x 8.75" w x 2" d    Microfiber  
Color: Black

- + Travel made easy – make-up and toiletries have a home
- + Interior pockets organize make-up brushes and keep bristles safe
- + Removable interior pouch can be used for shampoo or make-up

**BG951BK**

Embellishment	Area	50	100	250	500	1000
Imprinted	1.5" h x 5" w	8.53	8.32	8.12	7.92	7.73

5C



**PRICING POLICY** PLEASE READ CAREFULLY

Prices in this catalog are effective at time of publication. Current product pricing is available on our web site and industry specific search tools that provide supplier certified pricing and these prices will prevail.

**STATEMENT OF LIMITED LIABILITY**

Magnet LLC™, Innovations® by Magnet™, Benchmark Crystal and Clocks™, and The Bag Factory® are collectively known as The Magnet Group (TMG). TMG obligations with respect to orders placed and/or products delivered to buyer shall be limited to replacement or repair of defective products which are returned to the appropriate TMG division, postage pre-paid, within thirty (30) days from the date of shipping or, at TMG's option, to a refund of the amount of the purchase price paid for products returned to TMG within thirty (30) days from the date of shipping, without any further obligation or liability on the part of TMG. Buyer's sole remedies for liability of any kind with respect to products ordered or furnished by TMG and any other performance by TMG or with respect to buyer's use thereof, shall be limited to the replacement or repair or refund aforementioned and in no event shall TMG be liable or responsible for incidental, special or consequential damages allegedly caused by a failure to timely deliver products, non-delivery of products or a delivery of defective or non-conforming products. No claim of any kind by buyer, whether as to products delivered, non-delivery of products or other faulty performance by TMG shall exceed the amount of the purchase price received by TMG for the products, and a failure to provide TMG with notice of any claim within thirty (30) days from the date of shipping and failure to return such products within said time shall constitute a waiver of all such claims in respect to such products.

Additionally, please note all products and photos with trademarks or logos used in this catalog are to show art and imprint reproduction capability only. They do not imply an endorsement by holders of such trademarks or designs. They are not meant to be advertisements, nor are these items for sale to anyone other than parties expressly authorized by the owner of such trademarks and logo designs. Each and every buyer represents and warrants that all artwork, product design, text, and other content ("Content") provided to TMG in connection with any order for products or services, does not violate or infringe the intellectual property rights of any third party. Buyer will, at its sole cost and expense, indemnify, defend and hold harmless TMG and its shareholders, subsidiaries and affiliates (each a "Magnet Indemnified party or TMG Indemnified party") from and against any claims, liabilities, suits and /or proceedings (each a "Claim") made or brought by any third party against any Magnet Indemnified party, including, without limitation, reasonable attorney's fees, costs, judgments, awards, settlement amounts and expenses with respect thereto, to the extent that such Claim is based on a claim, suit and/or proceeding that the Content or the use thereof by a Magnet Indemnified Party in fulfilling an order for products or services to Buyer violates or infringes a patent, copyright, trademark or other intellectual property or proprietary right.

**\*CALIFORNIA PROPOSITION 65 WARNING**

Proposition 65 is a California law that has been in effect since 1986 to promote clean drinking water and keep toxic substances that cause cancer and birth defects out of consumer products. Proposition 65's formal title is "The Safe Drinking Water and Toxic Enforcement Act of 1986." It is administered by Cal/EPA's Office of Environmental Health Hazard Assessment (OEHHA).

The law requires that anyone at reasonable risk of exposure be informed when substances classified as toxins are present. Since enactment, it has been the reason for the addition of notices of specific contents to consumer product labels. Along with the added label requirements, an official list of implicated substances is maintained and made publicly available. To date there are over 700 chemicals listed, and entries are added or removed based on current scientific information. All substances listed show their known or suspected risk factors, a unique CAS chemical classification number, the date they were listed, and if so, whether they have been delisted.

The Magnet Group is committed to complying with all aspects of Prop 65.  
For further information please feel free to contact TMG at **1-800-458-9457**.



# The Bag Factory® Decorating Guide



	IMP RINTING	EMBROIDERY	DEBOSSING	LASERED IMPRINT
<b>Lead Time</b>	5-7 working days	7-10 working days	7-10 working days	7 working days
<b>Minimum Order</b>	Minimums vary by product.	Minimums vary by product.	Minimums vary by product.	Minimums vary by product.
<b>Maximum Number of Imprint Colors</b>	4 spot colors + Contact Customer Service for 4cp printing options	9 color maximum on all quantities + TBFW will match color as close as possible with available threads. TBFW uses Robinson Anton thread.	N/A	N/A
<b>Set Up Charges</b>	+ \$50.00 (G) per imprint color + Backorder Set-Up Charges are \$25.00 (G)	See Digitizing Fee	+ \$75.00 (G) + Backorder Set-Up Charges are \$25.00 (G)	+ \$50.00 (G)
<b>Running Charges</b>	+ First Color included at all quantities + Each additional color / location: 50-99 \$0.60 (G) 100-249 \$0.40 (G) 250-499 \$0.35 (G) 500-1000 \$0.30 (G) 1000+ \$0.30 (G)  *Prices listed per item represent a one color, one location imprint. Additional colors may require a different imprint method and result in a change to imprint area size.	Catalog price includes up to 8000 stitches. \$0.21 (H) per 1000 stitches over the first 8000 stitches. In our experience, some logos embroidered onto blankets require additional stitches. An estimated stitch count is recommended, and can be obtained by contacting Customer Service.	N/A	+ \$3.00 (H)
<b>Digitizing Charges</b>	N/A	+ Digitizing Fee - \$125.00 (H)	N/A	N/A
<b>Art Charges</b>	We will typeset up to three lines for free. All other typesetting & art will be billed at \$40.00 (X) per hour.	We will typeset up to three lines for free. All other typesetting & art will be billed at \$40.00 (X) per hour.	We will typeset up to three lines for free. All other typesetting & art will be billed at \$40.00 (X) per hour.	We will typeset up to three lines for free. All other typesetting & art will be billed at \$40.00 (X) per hour.
<b>Additional Charges</b>	PMS color matching available \$16.75 (G)	+ Additional Stitches - \$.21 (H) - each additional 1,000 stitches above 8,000. + Metallic Surcharge - \$.15 (H) per 1,000 stitches. + Copy of digitized disk can be purchased for \$11.75 (H).	N/A	Copy Change or Personalization - \$3.00 (H) per line
<b>Proofs</b>	On-line Proofs are no charge. Email or Fax Proofs requested outside of online system are \$10.00 (X). Product Proofs - first column pricing plus appropriate Set-Up Charge.	On-line Proofs are no charge. Email or Fax Proofs requested outside of online system are \$10.00 (X). Product Proofs - first column pricing plus appropriate Digitizing Charge.	On-line Proofs are no charge. Email or Fax Proofs requested outside of online system are \$10.00 (X). Product Proofs - first column pricing plus appropriate Set-Up Charge.	On-line Proofs are no charge. Email or Fax Proofs requested outside of online system are \$10.00 (X). Product Proofs - first column pricing plus appropriate Set-Up Charge.
<b>Spec Samples</b>	first Column Pricing plus appropriate Set-Up Charge.	first Column Pricing plus appropriate Digitizing Charge.	first Column Pricing plus appropriate Set-Up Charge.	first Column Pricing plus appropriate Set-Up Charge.
<b>Self Promo</b>	EQP less 25%	EQP less 25%	EQP less 25%	EQP less 25%

## ORDER INFORMATION

- All orders are subject to acceptance by The Bag Factory®.
- No verbal orders accepted.
- All orders written without pricing will be processed with The Bag Factory® current pricing.
- All prices in this catalog are subject to change without notice.

### E-mailed Orders

E-mailed orders should be sent to [orders@thebagfactory.com](mailto:orders@thebagfactory.com). Do not submit artwork with your order. Art can be sent to [art@thebagfactory.com](mailto:art@thebagfactory.com), referencing your purchase order number.

### Placed Orders

Placed orders are considered catalogs and will be processed as such. Due to tough transmissions, faxed orders or changes to orders may be difficult to read.

The Bag Factory® is not responsible for any copy misinterpreted when received by fax. Providing confirmation of this information by e-mail to Customer Service is recommended to prevent interpretation of copy error.

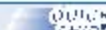
### Less Than Minimum Quantity

Call factory for quote.

### Co-op Program

Please call factory for price information. All co-ops must be factory authorized to insure proper billing. Co-ops must be established and verified before first order is submitted. Purchaser order must indicate co-op program and co-op quote number when submitted. If not, standard catalog charge will apply. Coupons or discounts cannot be applied to co-op orders. Co-ops not to exceed maximum catalog quantity.

## QUICK SHIP® GUIDELINES



- Quick Ship is available for Screen and T-Print decorating methods—one spot color only.
- Quick Ship must be designated very clearly on your faxed or emailed purchase order.
- Print-ready art and a complete purchase order must be received no later than 1:00 PM CST to the Quick Ship fax number: 639-488-6888 or [quickship@thebagfactory.com](mailto:quickship@thebagfactory.com)
- For specific art requirements, please see the Artwork section of this catalog.
- For your purchase order to be complete it must include the following:
  - Item number —Color
  - Quantity —Impart instructions —Shipping information
- Catalog quantities only—less than minimums are not available—subject to inventory availability.
- One standard imprint on one standard location qualifies for Quick Ship.
- Your purchase order must include an after-hours contact person for questions that may arise.
- Every effort will be made to clear up questions so your order qualifies for Quick Ship. If the designated contact is unavailable, or unable to answer the question, your order will be delayed by a minimum of one working day.
- Crossed items do not qualify for Quick Ship.
- If an online proof is requested on your order it will add one working day, plus approval time, to your order.
- There is no additional charge for Quick Ship orders; however, your in-lands date might require expedited shipping. Please contact Customer Service, prior to submitting your purchase order, if you require an expedited shipping quote.
- Multiple drop shipments and special packaging will add time to your order, please call for details.
- Weekends and observed holidays are not counted as production days.
- Customer's account must be current and in good credit standing.

## ART REQUIREMENTS

Please submit digital art file to: [art@thebagfactory.com](mailto:art@thebagfactory.com). If revised art is sent, it is the customer's responsibility to advise Customer Service of the new art. Changes to previously sent art must be sent to Customer Service to ensure use of new art. An art submission fee of 10.00 (\$) will apply.

We accept electronic artwork on CD, DVD and e-mail (file size permitting). We have an FTP site available, please call for log-in details. Include a hard copy or PDF of artwork with orders.

- Be sure to send all linked files, including all TIFF and EPS files for artwork placed in your document even if previously embedded, as well as all printer and screen fonts used.
- Send only original, vector files.
- All RGB defined colors and files must be converted to CMYK for four-color process production.

### We support the following software:

- Adobe Illustrator
- Adobe Photoshop
- Adobe Acrobat
- QuarkPress
- Adobe InDesign

### Acceptable File Types:

- Vector (preferred)
- TIFF (min. 300 dpi at final size)
- EPS (min. 300 dpi at final size)
- JPEG (min. 300 dpi at final size)
- PDF (Press Quality)
- BMP (for embroidery only)
- DST (Tajima digitized files for embroidery only)
- ZIP (compression file)
- Stuffit (compression file)

Microsoft electronic files generally are not acceptable as output for print production. However, black-and-white files can be output from a high-quality laser printer and then used as screen-ready artwork.

### Camera-Ready Artwork

Camera-ready art is artwork that can be scanned without further preparation or changes. Halftones (screens) will not photograph well and should be avoided. We will accept camera-ready artwork that is already separated or that includes black line work (or key lines) to separate each color. "Camera-ready" art should be clean, black, and crisp on a smooth white background that requires little or no touch-up. (Original art or PMT's are best.) Artwork must be submitted (A) of the finished printed size (for large prints) or large enough to fit on LIT x 11" page size. Please avoid submitting artwork that must be en-

larged more than 400%. If appropriate quality or size specifications are not met, an art charge will apply. This will be determined once artwork is received.

### The Following Artwork is Not Camera-Ready:

Coatings, letterhead, photographs, business cards, faxes, and low resolution laser printed artwork that is not 1200 dpi are not considered camera ready artwork. (Recommendation: Black and white 1200 dpi laser plate at 200% larger than actual size to be imprinted).

### Hard Copies

Hard copies are not required on every order, however on the hard copies we receive The Bag Factory® will review but will not proof against electronic artwork. The Bag Factory® offers several types of proofs that can be done if needed (additional charges may apply).

### Art Charges

If art requirements are not met, art time will be billed at \$48.00 (\$3 per hour). Factory WILL NOT be responsible for charges due to "clean-up" or "rework" deemed necessary to meet production standards.

### Typesetting

We will typeset up to 3 lines for FREE. All other typesetting (including copy changes) will be billed as needed \$48.00 (\$3 per hour). The typists must be indicated, or it will be left to the discretion of the typesetter. Charges less than \$40.00 will be processed without surcharges.

### Type Size

- Minimum type size:
  - Imprinted and Debossing print methods: 12 point.
  - Embossed print method: 8mm or 0.25" high.
- Small registered elements with fine lines may appear as a dot on product.

### Serif and Condensed Fonts

- Please avoid using fine serif fonts. These fonts are usually too thin and fill in or lose detail in the printing process.
- Avoid using serif fonts in four color reverse copy areas.
- Avoid condensed lettering with Imprinted and Debossing print methods.

### Line Thickness

- Minimum line thickness: 3 points.
- 3 point minimum line thickness for reverse copy or art.
- Avoid thin lines with Imprinted and Debossing print methods.

### Halftones

Halftones are easy available as four color process printing. Contact Customer Service for more information.

### Colors

- All RGB colors must be converted to CMYK for four-color process production.

### Additional Art Requirements

- Imprinted & Debossing
  - Print Block: All artwork will be enlarged to fit smallest imprint area of item unless otherwise noted. Customer is responsible for noting "art submitted to size" or "print at 100%".
  - Provide complete layout and mock-up as factory is not responsible for misinterpretation of rough layout or unclear copy.
- Embroidery
  - All separate MUST include thread colors and sequence.
  - We use Robson Anton Threads.
  - If a PMS color is all that is provided, the factory will choose the closest thread color available to that PMS color.
  - Submitted digitized files will be printed as submitted. We are not able to manipulate these files unless TMG generated the original digitized file.
  - Digitizing charges apply if art is submitted in non-digitized punched file (.a, .jpg, .se, .eps, etc.).
  - FOR STITCH COUNT QUOTES, CONTACT CUSTOMER SERVICE. AN ART FILE WILL NEED TO BE SUBMITTED FOR VIEWING PURPOSES.

### Helpful Hints

- EPS (Encapsulated PostScript) file format is used to transfer PostScript image information from one program to another. The file includes PostScript code plus a low-resolution representation of the image. Logos, illustrations and graphics that will be color separated should be saved as EPS files.
- TIFF (Tag Image File Format) is a widely used file format for exchanging bitmapped images (usually scans) between applications. Black and white line art or grayscale images should be saved as TIFF files.
- All grayscale artwork must be saved at the size of the finished document at a minimum of 300 dpi—black and white line art at a minimum of 1200 dpi.
- Please submit TIFF files as a layered document, in case last minute modifications are required.
- Always provide a list of fonts used within a document. This allows output technicians to download the appropriate fonts to their image center or output device. Remember to list all fonts used with Imprinted illustrations, or the output device may substitute a different font.
- When supplying PostScript fonts with a job, be sure to supply the printer fonts (also called outline fonts) and screen fonts (bitmap fonts). Both must be available for proper output.
- When supplying fonts, be sure to supply those used in the creation of EPS files. (They will not show up in your page makeup application on the list of fonts used.)
- We do not accept True Type based fonts. Convert to outline.



- Specify fonts and their style (bold or italic, for example) by using the font menu in your publishing program rather than selecting bold or italic by clicking on a style bar. The menu selection will give you a more accurate representation of the font and style desired. On the Inks platform, clicking on the style bar allows you to select styles for which fonts don't actually exist.
- Limit the number of fonts used in each job.
- Avoid using live web fonts. These fonts are usually too thin and fill in or lose detail in the printing process.
- Avoid saving EPS files within EPS files. Avoid transparencies and Illustrator files to create standard files convert to low resolution files.



We support the **sm@rt** program to improve artwork readiness. We accept artwork prepared by these standards. Please visit the website [www.artwork-submittal.com](http://www.artwork-submittal.com) for more information.

## ARTWORK STORAGE

Artwork will remain on file for 1 year. You must resubmit art after that time.

## COPY CHANGES

See individual items.

## PROOFS

Online proofs are no charge. E-mail or fax proofs requested to be sent outside of our online system will incur a \$10.00 (C) charge.

### Proofed Proofs

First Column Pricing plus appropriate set up charge for that production method.

## CANCELLATIONS OR CHANGES TO ORDERS

There will be a minimum \$10.00 (C) charge if an order is cancelled. Customers will be required to pay for all work completed at the time of the cancellation or change. Our goal is to provide the fastest service possible. Due to the speed of our order fulfillment, charges for changes or cancellations apply once the order is received. Changes may delay production and shipping.

Cancelled orders are subject to a minimum 25% restocking fee.

## ART RESUBMISSION CHARGE

When new artwork is submitted a \$10.00 (C) charge will be applied.

\*Changes to previously sent art must be sent to Customer Service to ensure one of our art

## STOCK IMPRINT COLORS

### With NO PMS Color Match/Mix Charge

Please note "STOCK colors" on your P.O. to avoid a PMS color match/mix charge. If a non-stock color or PMS number is listed, the requested color will be used and a PMS charge will apply. PMSColor matches are not guaranteed due to materials printed on. We will use the ink color requested and match as close as possible.

Because the colors below are printed in four-color process, they are not exact representations of the colors used.

 <b>Black</b> Pantone Black	 <b>Dark Orange</b> PMS 107	 <b>Royal Blue</b> PMS 206
 <b>Grey</b> PMS 430	 <b>Orange</b> PMS 105	 <b>Medium Blue</b> Pantone Blue
 <b>Light Grey</b> PMS 420	 <b>Athletic Gold</b> PMS 1293	 <b>Dark Blue/Heavy</b> PMS 201
 <b>Khaki</b> PMS 465	 <b>Yellow</b> Pantone Yellow	 <b>Purple</b> PMS 268
 <b>Tan</b> PMS 725	 <b>Green</b> PMS 347	 <b>Pink</b> PMS 230
 <b>Brown</b> PMS 489	 <b>Dark Green</b> PMS 349	 <b>Gold Metallic</b> PMS 871
 <b>Burgundy</b> PMS 202	 <b>Teal</b> PMS 320	 <b>Silver Metallic</b> PMS 877
 <b>Red</b> PMS 186	 <b>Light Blue</b> Process Blue	

## PMS AND 4-COLOR PROCESS COLOR MATCHES (Non-Stock Colors)

If a non-stock color or PMS number is listed on P.O., the requested color will be used and a PMS charge will apply. Color matches are not guaranteed due to variations in inks and raw materials. We will use the ink color requested and match as close as possible. For PMS color matches we recommend that a product proof be provided to ensure colors are correct. (Metallic and fluorescent colors are not available with digitally printed four-color process inprint.) \$11.75 (C) per color.

To insure repeat orders match the previous color, material specs, etc., please include a sample of the previous item with the new order. Due to variations in ink, materials, and press sets, no exact match to previous orders is not always possible.

## MAXIMUM IMPRINT COLORS

In most cases, a maximum of 2 colors per logical location is suggested. For additional requested in-plant colors, please contact Customer Service.

## STANDARD PRODUCTION TIME

5-7 business days is the preferred production time for most items at catalog quantities. Some items may take additional time based on specifications of individual orders and inprint methods. Contact Customer Service for a detailed production schedule based on specific needs.

## RUSH SERVICE

For orders requiring less than minimum standard production time, a rush charge may apply depending on production capacity. Contact the factory for production time confirmation and applicable charges.

## OVERRUNS/UNDERRUNS

Every effort will be made to ship the exact quantity ordered. The Magnet Group guarantees no short orders. However, we do reserve the right, in accordance with industry standards, to ship a maximum of 2% over the quantity ordered. The exact quantity shipped will be noted on your invoice and is the quantity that will be billed.

## PACKAGING

Items packaged bulk or as specified. See individual item pages for standard individual packaging on innovative products (marked with an asterisk.) Packaging is subject to change as necessary.

## SHIPPING & HANDLING

All shipments are F.O.B. Factory. Unless shipping methods or instructions are specified, we reserve the right to ship by the most beneficial means of transportation. Standard handling charges per box apply to all shipments, including 3rd party freight arrangements. Complete shipping instructions must accompany each order. Orders will be shipped directly to distributor if "Ship To Address" is NOT provided upon completion of order.

Due to variances in freight lines and charges, all freight estimates are estimates only. The Bag Factory® is not responsible for final shipping charges.

Freight Carriers: Freight carriers charge us for services/charges caused by incorrect information on purchase orders. Any fees we incur will be invoiced to distributor after we are notified.

Collect, Residential, and Third Party Billing: Any charges refused by or unable to bill to account supplied will be invoiced to the distributor.

Drop Shipments: Billed at \$15.00 (C). Drop shipments include the following: different address same day, same address different date (due within 30 days), or same address different methods.

Split Shipments: Billed at \$9.00 (C) on different dates due within 30 days.

Palletizing Fee: Billed at \$12.00 (C) per pallet.

C.O.D. Charge: Contact factory.

Foreign Shipments: Call factory for information and charges. All prices based on U.S. dollars and do not include tariffs, duties or brokerage fees.

Additional Charges: Additional charges billed to The Bag Factory® by carrier due to changes in original shipping agreement will be invoiced to the distributor. This includes, incorrect address charges, twice delivery charges or re-weighed freight due to no full of The Bag Factory®.

## PAYMENT TERMS

Net 30 days. All invoices not paid within terms will be assessed a late payment charge of 1.52% per month.

## RETURNS

All returns must be authorized and accompanied by an RMA#. Any returned items must be packaged to prevent damage in shipment. Items damaged due to poor packaging on return shipment may not be credited. All returned merchandise will be inspected prior to any credit being issued. If no defect is found, merchandise will be returned to the customer at their expense.

Blank goods can be returned within 72 hours of delivery date. Please contact Customer Service for return authorization number. Returns will incur a \$25.00 restocking fee plus all freight charges. Returns received without a prior return authorization will be denied.

## VARIANCES

= Mill tolerance allows 6% variance in bag weights and sizes.

= Due to the flexible nature of textiles, a tolerance of 5% either way from center is acceptable for in-printing position.

## BLANKS

= NEXT DAY shipping on orders of 1,000 pieces or LESS.

= 2nd DAY shipping on orders of 1,001 pieces or MORE.

= Blank goods can be returned within 72 hours of delivery date. Please contact Customer Service for return authorization number. Returns will incur a \$25.00 restocking fee plus all freight charges. Returns received without a prior return authorization will be denied.

## SAMPLES

= We prefer all sample orders to be submitted in writing via fax or email.

= Sample requests received before 2:00 p.m. Central Time will ship SAME DAY.

= Sample Charges:

– Spec Samples (non-returnable) – First Column Pricing plus applicable setup charge.

– Reader's Samples – billed at First Column Pricing plus freight. Third party freight accounts are preferred for shipping.

– Blank Samples – billed at First Column Pricing plus freight. Third party freight accounts are preferred for shipping.

= Sample invoices totaling LESS THAN \$10.00 are FREE if shipping number is supplied.

\*All prices in this catalog are subject to change without notice.



# ITEM INDEX

IN ALPHANUMERICAL ORDER

ITEM#	DESCRIPTION	PAGE
■ BG126	LUNCH SACK NON-WOVEN COOLER.....	46, 58
■ BG127	VALUE NON-WOVEN COOLER.....	47, 58
■ BG134	ICE RIVER 9-CAN COOLER.....	64
■ BG139	COMPANION COOLER.....	60
■ BG145	ICE RIVER BACKPACK COOLER.....	64
■ BG149	ICE RIVER 20-CAN COOLER.....	67
■ BG150	DAY HIKE COOLER.....	60
■ BG157	ICE RIVER 6-CAN COOLER.....	63
■ BG159	CELEBRATION BUCKET COOLER.....	61
■ BG176	HAMILTON COMPU-TOTE.....	13
■ BG200	VISIONTOTE.....	43
■ BG221	FLAIR BACKPACK.....	31
■ BG225	ACE BACKPACK.....	30
■ BG263	TROOPER DUFFEL.....	72
■ BG264	GAME DAY DUFFEL.....	73
■ BG268	TRAVEL CHAIR.....	69
■ BG270	TRAINER DUFFEL.....	73
■ BG271	VELOCITY SPORT DUFFEL.....	74
■ BG275	SCOUT DUFFEL.....	76
■ BG276	SCOUT ROLLING DUFFEL.....	76
■ BG277	VELOCITY ROLLING DUFFEL.....	75
■ BG284	TAOS COMPU-PACK.....	33
■ BG295	QUENCH HYDRATION PACK.....	70
■ BG300	ROLLING COOLER.....	61
■ BG305	ICE RIVER ROLLING COOLER.....	65
■ BG315	ICE RIVER GRILL COOLER.....	68
■ BG320	ICE RIVER SPEAKER COOLER.....	63
■ BG330	ICE RIVER SEAT COOLER.....	66
■ BG3300	PROMO FLEECETHROW.....	57
■ BG340	CAMO COOLER.....	67
■ BG380	CAMPUS QUICK DRAW PACK.....	26
■ BG382	STYLE QUICK DRAW PACK.....	26
■ BG410	SANTA FE TOTE.....	41
■ BG430	VALUETOTE.....	40
■ BG440	SPOTLIGHT TOTE.....	40
■ BG460	REEF TOTE.....	38
■ BG461	HANOVER TOTE.....	38
■ BG462	BAR HARBOR TOTE.....	39
■ BG475	TERRA VERDE TOTE.....	37
■ BG535	LOOP BUSINESS CASE.....	16
■ BG545	TERRA VERDE MESSENGER.....	17
■ BG5500	FLEECE THROW.....	56
■ BG553	CARGO COMPU-PACK.....	11
■ BG558	CLASSIC ATTACHE.....	16
■ BG562	METRO COMPU-CASE.....	12
■ BG564	HAMILTON COMPU-CASE.....	13



■ BG570.....TRECK COMPU-PACK.....	32	■ BG851.....THE HOOK TABLET BRIEF.....	19
■ BG576.....HAYDEN COMPU-CASE.....	10	■ BG852.....THE HOOK TOTE.....	36
■ BG581.....THE CITY ROLLING DUFFEL.....	9	■ BG853.....THE HOOK DRAWSTRING.....	27
■ BG582.....THE CITY COMPU-CASE.....	7	■ BG8000...MICRO-MINK SHERPA BLANKET.....	50
■ BG583.....THE CITY COMPU-PACK.....	8, 34	■ BG8800...MICRO-PLUSH FLEECE BLANKET.....	51
■ BG600.....SHOWTOTE.....	45	■ BG8805...BARREL DUFFEL.....	71
■ BG660.....FEATHERLITE QUICK DRAW PACK.....	28, 29	■ BG8806...VALUE SPORTS DUFFEL.....	71
■ BG6600...FLEECE/NYLON PICNIC BLANKET.....	55, 69	■ BG8860...CLASSIC COTTON TOTE.....	41
■ BG671.....NON-WOVEN SUPER SHOPPER.....	45	■ BG951.....MICROFIBER TRAVEL KIT.....	77
■ BG672.....LOOP CONVENTION TOTE.....	37	■ BG960.....BRAVO DOPP KIT.....	77
■ BG675.....NON-WOVEN SLING TOTE.....	42	■ BGT501...ALPHA EZ SCAN COMPU-PACK.....	5, 35
■ BG677.....FRONT LINE SLING BAG.....	31	■ BGT502...ALPHA EZ SCAN COMPU-CASE.....	5
■ BG7060...JERSEY FLEECE THROW.....	54	■ L114.....BIKE LIGHT.....	70
■ BG7084...JERSEY FLEECE BLANKET.....	53	■ ST001...WESTPORT ZIPPERED PADFOLIO.....	23
■ BG715.....NON-WOVEN 4-BTL WINE TOTE.....	44	■ ST002...WESTPORT WRITING PAD.....	23
■ BG730.....NON-WOVEN 2-BTL WINE TOTE.....	44	■ ST051...RECYCLED SPIRAL JOTTER.....	25
■ BG735.....NON-WOVEN INSULATED SHOPPING TOTE.....	46, 59	■ ST053...RECYCLED SPIRAL NOTEPAD.....	25
■ BG737.....INSULATED SHOPPING TOTE W/ EXT. POCKET.....	47	■ ST060...IN-LINE PADFOLIO.....	24
■ BG740.....5-IN-1 TRAVEL KIT.....	49	■ ST061...BANDED PADFOLIO.....	22
■ BG745.....4-IN-1 SHOPPING KIT.....	48	■ ST100...ROLLICK WRITING PAD - <i>New Colors!</i> .....	21
■ BG800.....HARTFORD MESSENGER.....	14	■ ST150...TRADITION ZIPPERED PADFOLIO.....	20
■ BG810.....HARTFORD TOTE.....	15	■ ST151...TRADITION WRITING PAD.....	20
■ BG850.....THE HOOK COMPU-CASE.....	19	■ STRAP-B...BLANKET CARRYING STRAP.....	52



asi 68507  
ppai 260424  
upic bagfctry  
sage 52498

A DIVISION OF



## Please see all of our 2012 catalogs



asi 68807 ppai 112424  
upic MAGNET sage 52498



asi 68807 ppai 380919  
upic MAGNET2 sage 52498



asi 68807 ppai 260424  
upic BAGFACTRY sage 52498



asi 68807 ppai 111438  
upic BENCHMARK sage 52498

Scan these codes with your smartphone  
for **instant** access to this catalog!



Shoot It!



Microsoft Tag



QR-Code



Shoot It!



[www.themagnetgroup.com](http://www.themagnetgroup.com)  
[www.thebagfactory.com](http://www.thebagfactory.com)

Proudly Distributed By:

