

BEARDMORE

BETTER LEATHERS SINCE 1844

2008



SPECIALISTS IN LEATHER & CORPORATE BRANDING

ASI/39275 PPAI/256665 PPACanada/20050908 UPIC/BEARD125 SAGE/67631

THE STORY OF BEARDMORE

The history of my family and that of Beardmore have been closely intertwined with the leather industry for over 200 years. The common bond has always been the allure and attraction of quality leather goods. Both sides of my family the Dawkins and Heller families - have been active in the leather industry during that period. Leather has been an international commodity for most of this time which has allowed us to build up true expertise in product, contacts and sourcing. I am proud to share some of this long history with you. It is the foundation of the knowledge-based enthusiasm and innovation we focus on today.

Jane Dawkins
President
Beardmore Leathers
Better Leathers since 1844


- 
- **1799** The first Dawkins ancestors settle in Dundas, ON Canada and start producing leather.
 - **1818** George L. Beardmore born in England.
 - **1843** The Heller family opens a leather factory in Europe (now within the Czech Republic).
 - **1844** G. L. Beardmore opens the first Beardmore Leather operation in Hamilton, ON Canada.
 - **1865** Beardmore moves to Acton, ON Canada - later to be known as Canada's "Leather Town".
 - **1876** Beardmore opens a second leather operation in Bracebridge (Muskoka), ON Canada.
 - **1882** The first known member of the Dawkins family joins Beardmore & Co. - Bracebridge, ON location.
 - **1900** Beardmore's Acton location reaches over 1 million square feet of floor space.
 - **1914** Beardmore is established as the largest tannery in the British Empire and is critical to the War effort - the Hellers are busy producing leather for Austria.
 - **1915** 25% interest in Beardmore (from the estate of one of four brothers) is sold for \$ 1.5 million.
 - **1931** The Heller family builds a modern leather factory on the banks of the Elbe River.
 - **1944** Beardmore's 100th anniversary.
 - **1945** Beardmore is acquired by Canada Packers (later Maple Leaf foods) - at least 10 members of the Dawkins family employed at Beardmore.
 - **1946** Heller business closes in the political turmoil of Eastern Europe.
 - **1949** Frank and Charles Heller join Beardmore & Co. In Acton, ON.
 - **1961** Frank Heller & Co. founded in Acton, ON.
 - **1967** Fred Dawkins & Karin Heller are married.
 - **1969** Frank Heller dies. Fred Dawkins and Ron Heller, (brothers-in-law) take over Frank Heller & Company.
 - **1980** Dawkins and Heller families open Canada's largest leather store.
 - **1986** Maple Leaf closes the Beardmore plant in Acton, ON.
 - **1987** Frank Heller & Co. produces a record 18 million square feet of leather.
 - **1989** Frank Heller and Co is sold.
 - **1998** Fred and Jane Dawkins acquire the Beardmore name and trademarks from Maple Leaf Foods and begin operation as a manufacturer/supplier for the Promotional & Premium Incentives Industry.

TABLE OF CONTENTS

Mission Statement:

Beardmore Leathers is dedicated to providing our clients with a distinctive edge in their reward and promotional programs. We are committed to use our history, expertise and product knowledge in the most energetic and creative ways to ensure unique, value based products that send a message of quality, innovation and distinction. There is no better medium than leather and it is our goal to ensure that there is no better leather source than Beardmore!

THINK LEATHER - THINK BEARDMORE

Men's, Women's & Kids Jackets

	Page
Goat Nappa Co-ordinates	2
Rugged Cowhide Collection	4
Luxury Deer Tan Leather	8
Supple Lamb & New Zealand	10

Theme Jackets

Bikers	14
Aviators & Flight Jackets	16
Melton/ Leather Team Jackets	18

Leather Accessories

Forget Me Nots - Packaging that Lasts	
Duffels	20
Cardholders, Wallets & ID Cases	22
Portfolios & Business	24
Coasters & Barware	26
Leather Packaging	28
Leather Gloves	30
Home/Office Decor	32
Awareness Collection	34
Beardmore Decoration Services	35
Beardmore's Leather Glossary	36
The Impact of Colour	37

NEW



EMMA

Women's leather jacket with zip front, shirt collar, slash pockets, and top-stitched seams. Features a feminine shape that fits most body types. Available in regular and tall sizes XS to 4XL .

Center back length: 66 cm (28")

Internal easy access zip for imprinting.

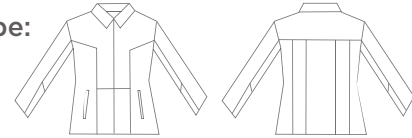
Leather: Goat Nappa

Recommended Imprint Locations:

Left Chest
Back Yoke

Recommended Imprint Type:

Stamped Deboss
3D Raised Emboss
Embroidery



Standard Production Time: 7 to 10 business days

JASON & GISELLE

Men's & Women's sleek leather jacket with zip front, shirt collar, slash pockets. Features 1 left chest inside pocket. Spring/Fall light-weight lining. Available in regular and tall sizes XS to 4XL .

Center back length: 66 cm (28")

Internal easy access zip for imprinting.

Leather: Goat Nappa

Recommended Imprint Locations:

Left Chest
Back Yoke
Cuff

Recommended Imprint Type:

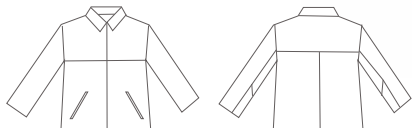
Stamped Deboss
3D Raised Emboss
Embroidery

Standard Production Time:
7 to 10 business days

NEW



GISELLE



THINK LEATHER - THINK BEARDMORE



ERIC

Men's classic leather bomber with zip front, domed storm flap, shirt collar, adjustable domed cuffs, slash pockets and 5 piece elastic waistband. Available in regular and tall sizes XS to 4XL .

Also features inside chest pockets and 3-season thermal lining.

Center back length:
71 cm (28")

Internal easy access zip
for imprinting.

Leather: Goat Nappa

Recommended Imprint
Locations:
Left Chest
Back Yoke

Recommended Imprint
Type:
Stamped Deboss
3D Raised Emboss
Embroidery

Standard Production
Time: 7 to 10 business
days





AVA

Women's rugged cowhide leather zip front car coat with shirt collar, on-seam pockets, princess seams, removable zip out lining and inside chest pockets. Available in regular sizes XS to 4XL .

Center back length: 70 cm. (27.5")

Internal easy access zip for imprinting.

Leather: Rugged Cowhide

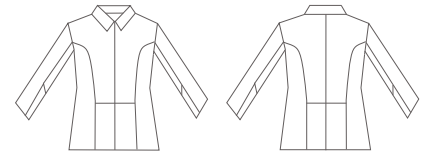
Recommended Imprint Locations:

Left Chest
Back Yoke
Cuff

Recommended Imprint Type:

Stamped Deboss
3D Raised Emboss
Embroidery

Standard Production Time: 7 to 10 business days



OSCAR

Men's rugged cowhide zip front bomber jacket with shirt collar, slash pockets, inside chest pockets, and a removable zip out lining. Available in regular sizes XS to 4XL .

Center back length: 69 cm (27")

Internal easy access zip for imprinting.

Leather: Rugged Cowhide

Recommended Imprint Locations:

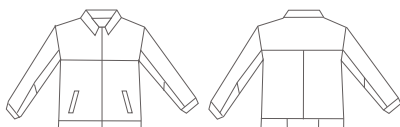
Left Chest
Back Yoke
Cuff

Recommended Imprint Type:

Stamped Deboss
3D Raised Emboss
Embroidery

Standard Production Time:

7 to 10 business days



WILL

Men's rugged cowhide 4- button front car coat with shirt collar, slash pockets, inside chest pockets and 2" quilted 3-season thermal lining. Available in regular and tall sizes XS to 4XL .

Center back length: 80 cm (31.5")

Internal easy access zip for imprinting.

Leather: Rugged Cowhide

Recommended Imprint Locations:

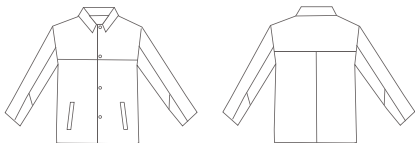
Left Chest
Back Yoke
Cuff

Recommended Imprint Type:

Stamped Deboss
3D Raised Emboss
Embroidery

Standard Production Time:

7 to 10 business days



NICOLE

Women's matchable to Men's Style: Will.

Details as above.

Center back length: 72 cm (28.5")





LOUIS

Men's rugged cowhide zip front car coat with shirt collar, slash pockets, inside chest pockets and 2" quilted lining. Available in regular and tall sizes XS to 4XL & Youth sizing!

Center back length: 80 cm (31.5")

Internal easy access zip for imprinting.

Leather: Rugged Cowhide

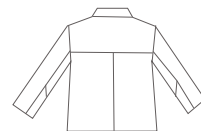
Recommended Imprint Locations:

Left Chest
Back Yoke
Cuff



Recommended Imprint Type:

Stamped Deboss
3D Raised Emboss
Embroidery



Standard Production Time: 7 to 10 business days

LOUISE

Women's rugged cowhide zip front car coat with shirt collar, slash pockets, inside chest pockets and 2" quilted lining.

Generous Fit. Available in regular sizes XS to 4XL .

(Please note pocket change is as per sketch not photo).

Center back length: 75 cm (29.5")

Internal easy access zip for imprinting.

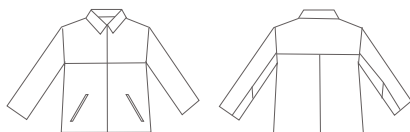
Leather: Rugged Cowhide

Recommended Imprint Locations:

Left Chest
Back Yoke
Cuff

Recommended Imprint Type:

Stamped Deboss
3D Raised Emboss
Embroidery



Standard Production Time: 7 to 10 business days

EDDIE JR

NEW

Team Leather Jacket - Available in both Youth and Adult sizing. Bomber features 6 snap front closure, retro black/cream knit collar, cuffs, and waistband, slash pockets, quilted lining and inside chest pockets. Available in regular and youth sizes S TO 2XL and adult sizing S to 4XL .

Center back length: 63 cm (25")

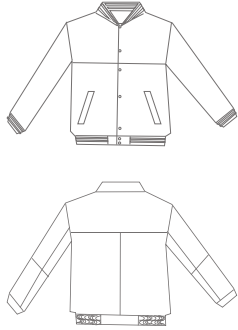
Internal easy access zip for imprinting.

Leather: Goat Nappa, Rugged Cowhide or Milled Buff

Recommended Imprint Locations:
Left Chest
Back Yoke

Recommended Imprint Type:
Stamped Deboss
3D Raised Emboss
Embroidery

Standard Production Time:
Adult - 7 to 10 business days
Youth - 4 to 6 weeks





GRACE

Women's classic James Dean style in luxury cowhide leather with zip front, shirt collar, slash pockets, inside chest pockets and lightweight lining for full 3 season wear. Available in regular and tall sizes XS to 4XL .

Center back length: 66 cm (28")

Internal easy access zip for imprinting.

Leather: Deer Tan Cowhide

Recommended Imprint Locations:

Left Chest
Back Yoke
Cuff



Recommended Imprint Type:

Stamped Deboss
3D Raised Emboss
Embroidery



Standard Production Time: 7 to 10 business days

BRYAN



JAMES DEAN (right)

Men's traditional James Dean style in luxury cowhide leather with zip front, shirt collar, slash pockets, inside chest pockets and lightweight lining. Available in regular and tall sizes XS to 4XL .

Center back length: 71 cm (28")

Internal easy access zip for imprinting.

Leather: Deer Tan Cowhide

Recommended Imprint Locations:

Left Chest
Back Yoke
Cuff

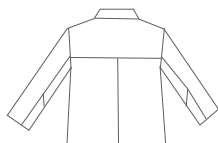
Recommended Imprint Type:

Stamped Deboss
3D Raised Emboss
Embroidery



Standard Production Time:

7 to 10 business days



BRYAN (left)

Men's modern bomber in luxury cowhide leather with zip front, shirt collar, slash pockets, inside chest pockets, 5 piece elastic waistband and lightweight lining. Available in regular sizes XS to 4XL .

Center back length: 71 cm (28")

Internal easy access zip for imprinting.

Leather: Deer Tan Cowhide

Recommended Imprint Locations:

Left Chest
Back Yoke

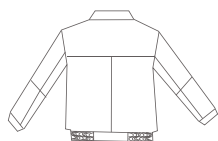
Recommended Imprint Type:

Stamped Deboss
3D Raised Emboss
Embroidery



Standard Production Time:

4 to 6 weeks



NEW



ROBYN

Women's leather button up car coat, with notched collar, hidden on seam pockets and top-stitched seams. Available in regular sizes XS to 4XL .

Center back length: 73 cm (29.5")

Internal easy access zip for imprinting.

Leather: Smooth Lamb

Recommended Imprint Locations:
Left Chest
Back Yoke

Recommended Imprint Type:
Stamped Deboss

Standard Production Time: 4 to 6 weeks



RILEY

Women's sleek leather jacket with button front, shirt collar, slash pockets and princess lines to accentuate a feminine fit. Spring/Fall light-weight lining. Available in regular sizes 2 to 16. (Please note chest seam change is as per sketch not photo).

Center back length: 68 cm (27")

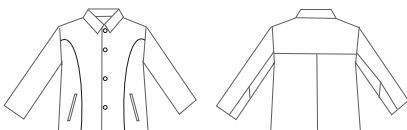
Internal easy access zip for imprinting.

Leather: Smooth Lamb

Recommended Imprint Locations:
Left Chest
Back Yoke

Recommended Imprint Type:
Stamped Deboss

Standard Production Time: 4 to 6 weeks



NEW



RYAN

Men's 3 button front leather car coat with notched collar, slash pockets and 1 interior left chest pocket. Available in regular and tall sizes XS to 4XL .

Center back length:
81 cm (32").

Internal easy access zip
for imprinting.

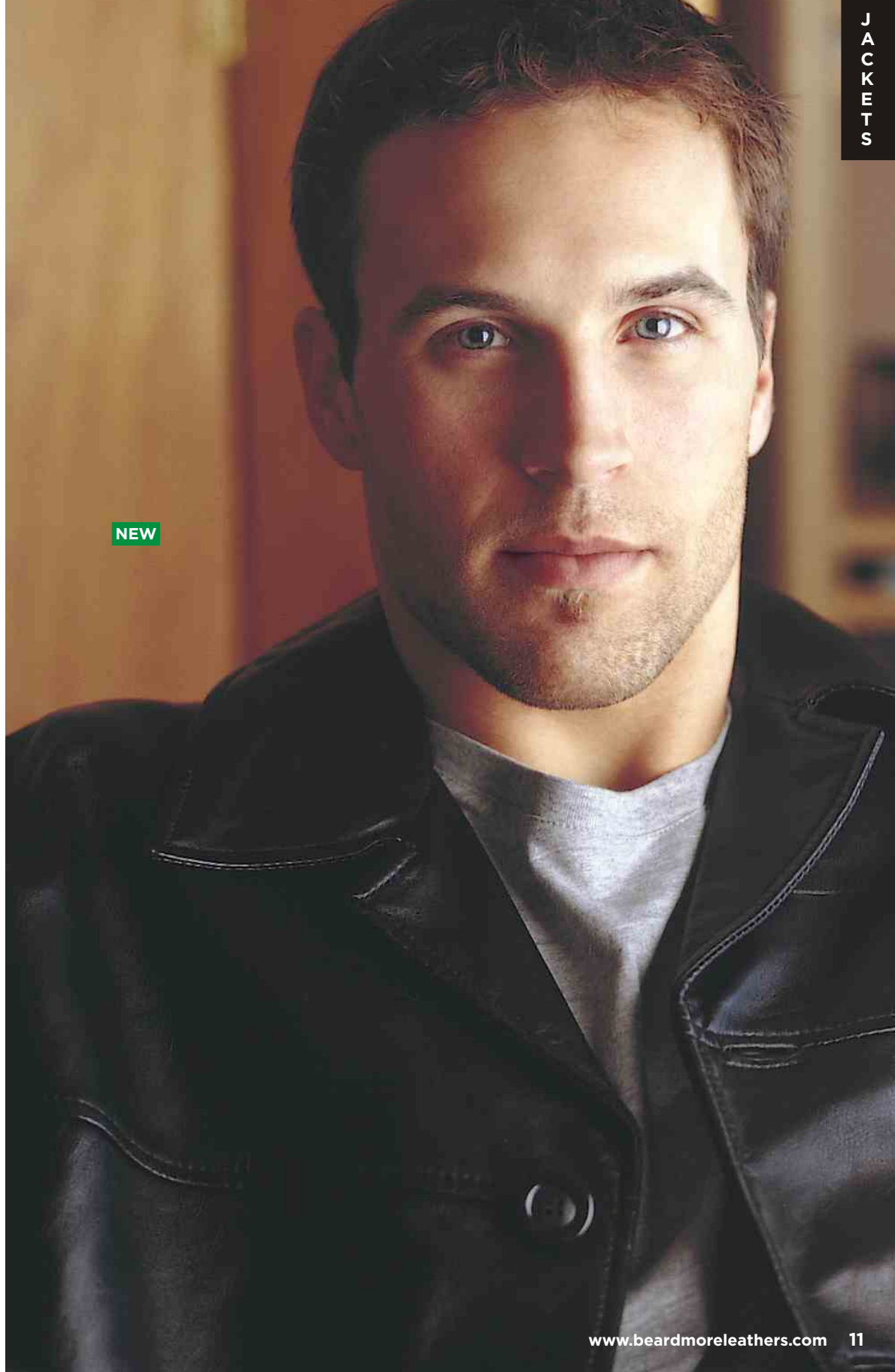
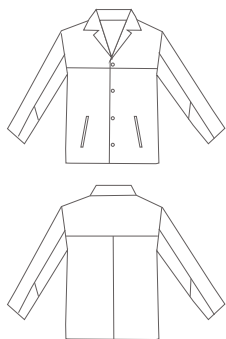
Leather: Smooth Lamb

NEW

Recommended Imprint
Locations:
Left Chest
Back Yoke

Recommended Imprint
Type:
Stamped Deboss

Standard Production
Time:
4 to 6 weeks



NEW



KAREN

Women's new zealand lamb leather zip up car coat with shirt collar, on-seam pockets, princess seaming and a lightweight thermal lining. Available in regular and tall sizes XS to 4XL .

Center back length: 73 cm. (29.5")

Internal easy access zip for imprinting.

Leather: New Zealand Lamb

Recommended Imprint Locations:

Left Chest
Back Yoke
Cuff



Recommended Imprint Type:

Stamped Deboss

Standard Production Time:

7 to 10 business days



KEVIN

Men's new zealand lamb bomber jacket with shirt collar, storm flap with 4 snap closures, adjustable domed cuff, slash pockets, inside chest pockets, and a lightweight thermal lining. Available in regular sizes and tall sizing XS to 4XL .

Center back length: 69 cm (28")

Internal easy access zip for imprinting.

Leather: New Zealand Lamb

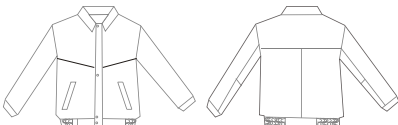
Recommended Imprint Locations:

Left Chest
Back Yoke
Cuff

Recommended Imprint Type:

Stamped Deboss

Standard Production Time: 7 to 10 business days



NEW



ALLIE

Women's fly front zip up with hidden on seam pockets and 1 interior left chest pocket.
 Light-weight lining.
 Available in regular sizes XS to 4XL .

Center back length:
 63 cm (24").

Internal easy access zip for imprinting.

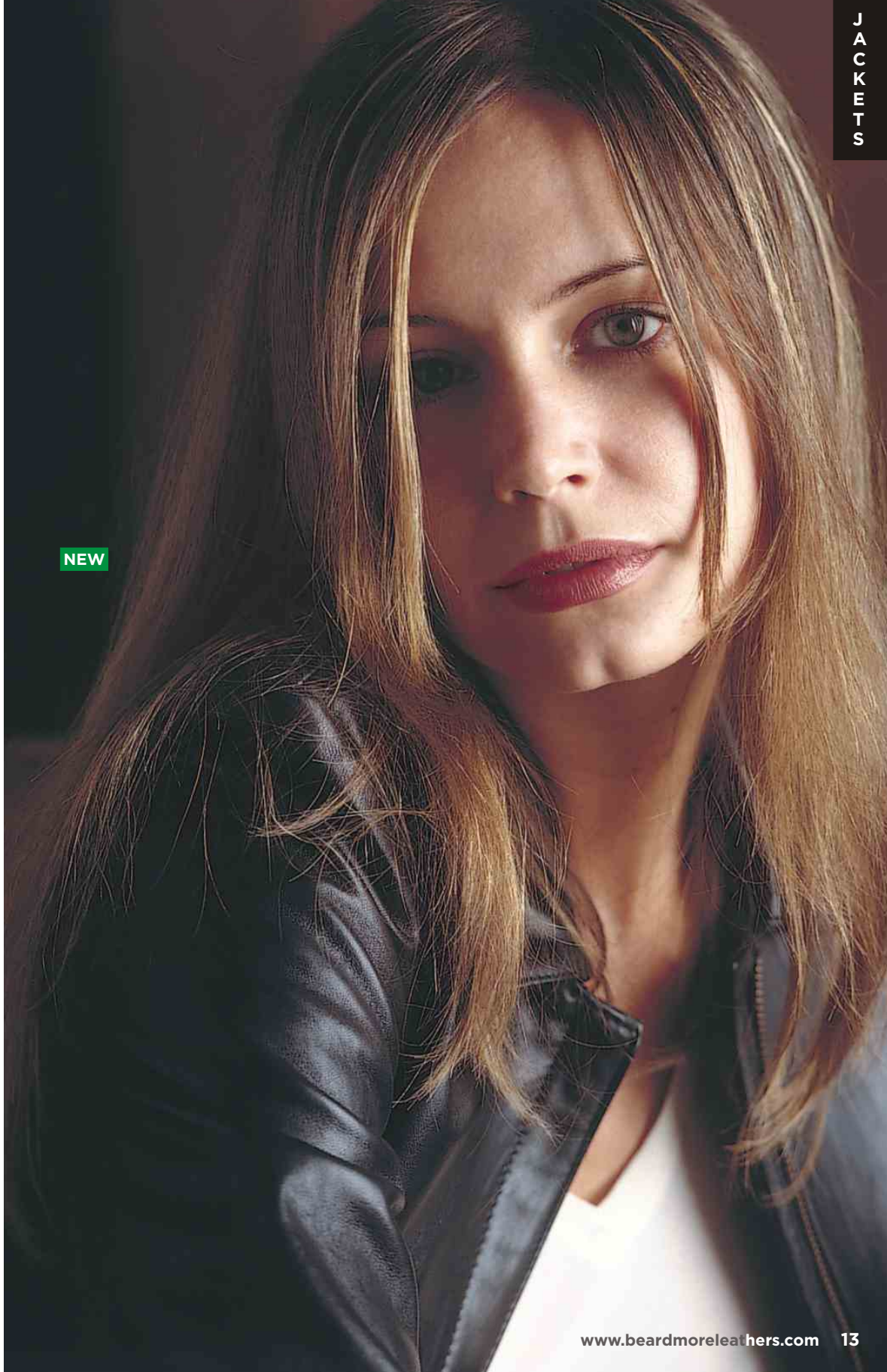
Leather: New Zealand Lamb

NEW

Recommended Imprint Locations:
 Left Chest
 Back Yoke

Recommended Imprint Type:
 Stamped Deboss

Standard Production Time:
 4 to 6 weeks



NEW



SIRI

Women's fashion biker with zip front, stand-up collar welt pockets, decorative seams and a lightweight lining. Available in regular sizes 2 to 16.

Center back length: 60 cm. (24")

Internal easy access zip for imprinting.

Leather: Smooth Lamb

Recommended Imprint Locations:

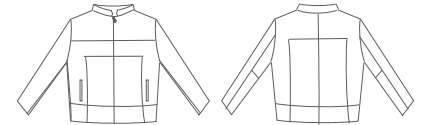
Left Chest
Back Yoke

Recommended Imprint Type:

Stamped Deboss

Standard Production Time:

4 to 6 weeks



BRANDO

Classic Brando style biker with notched snap down collar, full zip front, zip closure cuffs and pockets, inside chest pockets, comfort action back and a lightweight thermal lining. Available in regular and tall sizes XS to 4XL .

Center back length: 69 cm (27")

Internal easy access zip for imprinting.

Leather: Buffalo

Recommended Imprint Locations:

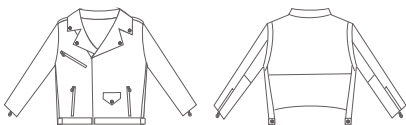
Left Chest
Back Yoke

Recommended Imprint Type:

Stamped Deboss
3D Raised Emboss
Embroidery
Other

Standard Production Time:

4 to 6 weeks



NEW



LOGAN & AUSTIN

Authentic Biker style jacket features zip front, stand-up collar with snap closure, 2 hand warmer pocket, 3 vented pockets on side and back, inside chest pockets and lightweight lining. Available in regular and tall sizes XS to 4XL .

Center back length: 71 cm (28")

NEW

Internal easy access zip for imprinting.

Leather: Buffalo, Deer Tan Cowhide (right) or Goat Nappa (simplified style AUSTIN below)

Recommended Imprint Locations:

- Left Chest
- Back Yoke

Recommended Imprint Type:

- Stamped Deboss
- 3D Raised Emboss
- Embroidery
- Other

Standard Production Time:

4 to 6 weeks

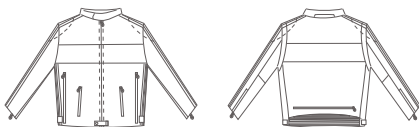


NEW

AUSTIN



BEARDMORE - BIKERS a la carte! Be Unique! Be Corporate Proud!
 Style Options, Leather Choices. Be your own Company Brand with our a la carte options!
Specialized decoration options: Hand cut leather - Antique 3D Emboss - Customize Corporate Colours
SUPPLY US YOUR VECTOR ART & WE WILL CREATE FREE VIRTUAL PRESENTATIONS



NEW



ICE MAN

Classic aviator bomber with zip front, shirt collar, adjustable domed cuffs, and 5 piece elastic waistband. Inside chest pockets and 3-season thermal lining. Available in regular sizes XS to 4XL .

Center back length: 73 cm. (28")

Internal easy access zip for imprinting.

Leather: Deer Tan Cowhide

Recommended Imprint Locations:

Left Chest
Back Yoke



Recommended Imprint Type:

Stamped Deboss
3D Raised Emboss
Embroidery



Standard Production Time: 4 to 6 weeks

BILLY & CASSIE

Men's & Women's genuine shearling pilot jackets. Men's with shirt collar, women's with stand up collar (as shown next page), antique brass zip front, rolled cuffs & welt pockets, Available in regular sizes XS to 4XL .

Center back length: 73 cm (28")

Leather: Shearling

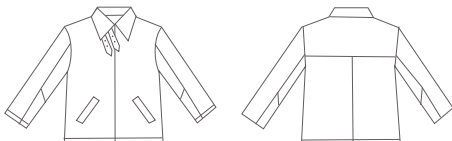
Recommended Imprint Locations:

Left Chest
Back Yoke

Recommended Imprint Type:

Embroidery

Standard Production Time: 6 to 8 weeks



MAVERICK

Classic aviator bomber with zip front, shirt collar, knit cuffs & waist band, inside chest pockets and 3-season thermal lining. Available in regular sizes XS to 4XL .

Center back length: 73 cm. (28")

Internal easy access zip for imprinting.

Leather: Buffalo Nubuck

Recommended Imprint Locations:

- Left Chest
- Back Yoke

Recommended Imprint Type:

- Stamped Deboss
- 3D Raised Emboss
- Embroidery

Standard Production Time:
7 to 10 business days



CASSIE





ROSS

Classic 24 oz melton/leather team jacket with 6 dome front, stand up mandarin all leather collar, cowhide sleeves, knit cuffs and waistband and button hole pockets. Inside chest pockets and quilted thermal lining. Available in regular sizes XS to 4XL .

Center back length: 71 cm (28")

Internal easy access zip for imprinting.

Leather: Rugged Cowhide

Recommended Imprint Locations:

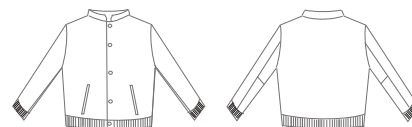
Left Chest

Back Yoke

Recommended Imprint Type:

Embroidery

Standard Production Time: 4 to 6 weeks



ROSS JR

Classic 24 oz melton/leather jacket with 6 dome front, stand up mandarin all leather collar, cowhide sleeves, knit cuffs and waistband and button hole pockets. Inside chest pockets and quilted thermal lining. Available in regular sizes S to XL .

Center back length: 63.5 cm (25")

Internal easy access zip for imprinting.

Leather: Rugged Cowhide

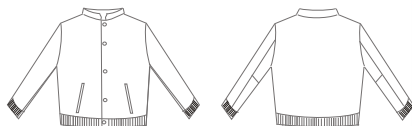
Recommended Imprint Locations:

Left Chest

Back Yoke

Recommended Imprint Type:

Embroidery



Standard Production Time: 4 to 6 weeks

THINK LEATHER - THINK BEARDMORE



NEW

RICHARD

24 oz melton/leather jacket with zip front and storm flap, all leather shirt collar, cowhide sleeves, leather cuffs and knit waistband. Inside chest pockets and quilted thermal lining. Available in regular sizes XS to 4XL.

Center back length:
71 cm (28").

Internal easy access zip
for imprinting.

Leather: Rugged Cowhide

Recommended Imprint
Locations:
Left Chest
Back Yoke

Recommended Imprint
Type:
Embroidery

Standard Production
Time:
7 to 10 business days



1- HT0702
Canvas/ Leather Duffel Bag

Dimensions: 9.5" x 9.5" x 19"
Leather: Rugged Cowhide

Recommended Imprint Location:
Center Front

Recommended Imprint Type:
Stamped Deboss or Embroidery

Standard Production Time:
4 to 6 weeks



1

NEW



2

NEW

2 - HT0701
Leather Duffel Bag

Dimensions: 9.5" x 9.5" x 19"
Leather: Rugged Cowhide

Recommended Imprint Location:
Center Front

Recommended Imprint Type:
Stamped Deboss or Embroidery

Standard Production Time:
7 to 10 business days



forget me nots
by BEARDMORE
Packaging that Lasts

ACCESSORIES 2008 *Gifts for every price point*



NEW

3

3- HT-LTV03
Leather Luggage Tags
 Dimensions: 5" x 2.75"
 Leather: Buff Calf
 Imprint Location: Center Back
 Imprint Type: Stamped Deboss
 Standard Production Time:
 Black -7 to 10 business days
 Colours- 4 to 6 weeks

7- AG693
Men's Leather Money Clip
 Dimensions: 4" x 2.5"
 Leather: Rugged Cowhide
 Imprint Location: Lower Right Corner
 Imprint Type: Stamped Deboss
 Standard Production Time:
 7 to 10 business days

4- WW011
Women's Leather Wallet
 Dimensions: 5.75" x 4"
 Leather: Buff Calf
 Imprint Location: Upper Right Corner
 Imprint Type: Stamped Deboss
 Standard Production Time:
 7 to 10 business days

5- WV010
Women's Leather Clutch
 Dimensions: 7.5" x 4.5"
 Leather: Deer Tan Cowhide
 Imprint Location: Lower Right Corner
 Imprint Type: Stamped Deboss
 Standard Production Time:
 4 to 6 weeks

6- MW061
Men's Leather Wallet
 Dimensions: 4.25" x 3.5"
 Leather: Buff Calf
 Imprint Location: Lower Right Corner
 Imprint Type: Stamped Deboss
 Standard Production Time:
 7 to 10 business days

4



5



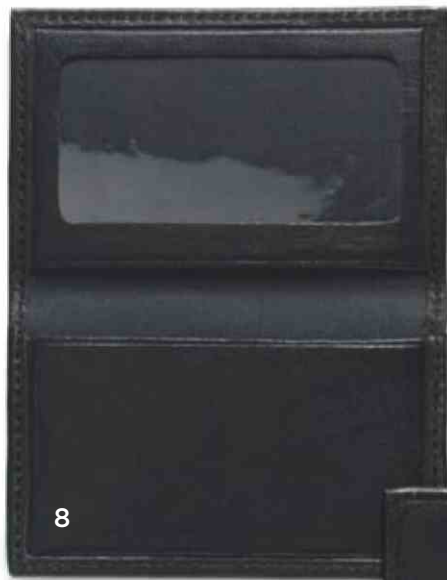
6



7

8- CC102
Leather Cardholder with Window Pocket

Dimensions: 4.25" x 2.75"
Leather: Smooth Cowhide
Imprint Location: Center Front
Imprint Type: Stamped Deboss
Standard Production Time:
4 to 6 weeks



8

9- CC105
Leather Cardholder with Window & Gusset Pocket

Dimensions: 4.25" x 2.75"
Leather: Smooth Cowhide
Imprint Location: Center Front
Imprint Type: Stamped Deboss
Standard Production Time:
7 to 10 business days



9

NEW

10- CC103
Leather Cardholder with 4 card pockets

Dimensions: 4.25" x 2.75"
Leather: Smooth Cowhide
Imprint Location: Center Front
Imprint Type: Stamped Deboss
Standard Production Time:
4 to 6 weeks



10



12

12- CC101
Leather Cardholder

Dimensions: 4.25" x 2.75"
Leather: Smooth Cowhide
Imprint Location: Center Front
Imprint Type: Stamped Deboss
Standard Production Time:
7 to 10 business days

11- CC098
Single Sided Leather Cardholder with window & card pocket

Dimensions: 4.25" x 2.75"
Leather: Smooth Cowhide
Imprint Location: Center Front
Imprint Type: Stamped Deboss
Standard Production Time:
7 to 10 business days



11

NEW

13



13- BE-TV015
Leather Travel Wallet
 Dimensions: 9.25" x 4.5"
 Leather: Smooth Cowhide
 Imprint Location: Bottom Right Corner
 Imprint Type: Stamped Deboss
 Standard Production Time:
 4 to 6 weeks

17- BE-PP0704
Leather Passport Cover
 Dimensions: 5.5" x 4"
 Leather: Milled Buff
 Imprint Location: Lower Right Corner
 Imprint Type: Stamped Deboss
 Standard Production Time:
 7 to 10 business days

14- BE-PD0701
Nubuck Padfolio

Dimensions: 12.5" x 9.75"
 Leather: Cow Nubuck
 Imprint Location: Lower Right Corner
 Imprint Type: Stamped Deboss
 Standard Production Time:
 4 to 6 weeks

15- BE-PD0702
Leather Padfolio

Dimensions: 12.5" x 9.75"
 Leather: Milled Buff
 Imprint Location: Lower Right Corner
 Imprint Type: Stamped Deboss
 Standard Production Time:
 7 to 10 business days

16- BE-JP0703
Leather Junior Padfolio

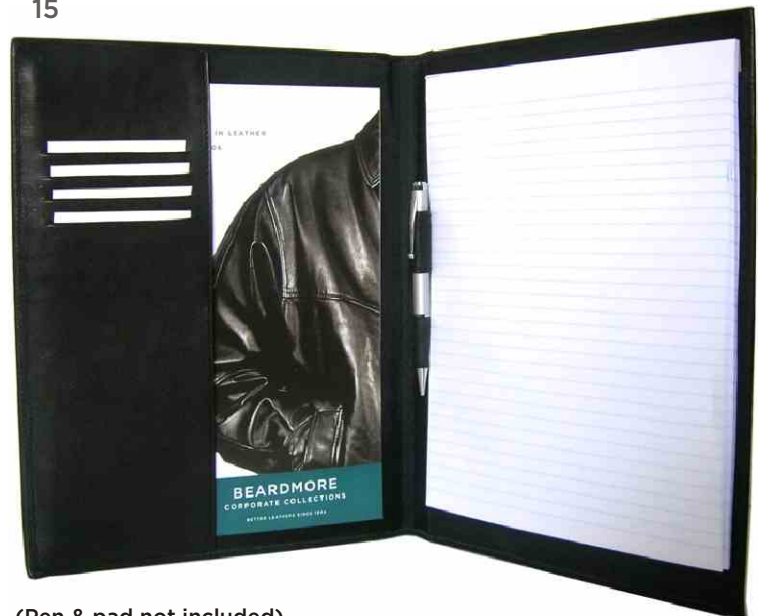
Dimensions: 6.25" X 4.5"
 Leather: Milled Buff
 Imprint Location: Lower Right Corner
 Imprint Type: Stamped Deboss
 Standard Production Time:
 4 to 6 weeks

14

NEW



15



(Pen & pad not included)

NEW

17



16

NEW



18- BE-DC585
Leather Document Case

Dimensions: 16.5" x 11"
Leather: Milled Buff

Recommended Imprint Location:
Center Front

Recommended Imprint Type:
Stamped Deboss

Standard Production Time:
7 to 10 business days



18

19

NEW



19 - BE-HC0705
Leather Portfolio

Dimensions: 18" x 12" x 3"
Leather: Buff Calf

Recommended Imprint Location:
Center Front

Recommended Imprint Type:
Stamped Deboss

Standard Production Time:
4 to 6 weeks



20

20- BA-WP612
Leather Server's Pouch
Dimensions: 5.25" x 6.5"
Leather: Milled Buff
Imprint Location: Center Pocket
Imprint Type: Stamped Deboss
Standard Production Time:
7 to 10 business days

21- BA-SC07
Leather Coaster
Dimensions: 3.5" diameter
Leather: Veg Tan Cowhide
Imprint Location: Center
Imprint Type: Stamped Deboss
Standard Production Time:
4 to 6 weeks

23- HT-CS0701
6 Pack Leather Coaster
Dimensions: 3.75" x 3.75"
Leather: Buff Calf
Imprint Location: Center
Imprint Type: Stamped Deboss
Standard Production Time:
7 to 10 business days

22- BA-WB07
Leather Wine Bag
Dimensions: 13" x 3.25" Diameter
Leather: Milled Buff
Imprint Location: Center Front
Imprint Type: Stamped Deboss
Standard Production Time:
4 to 6 weeks

NEW



21



22

NEW



23

24- CT350
Set of 4 Round Leather Coasters
in a Felt-lined Leather Tray

(Also available as single coasters - style CT250R)

Dimensions: 3.5" X 3.5"

Leather: Buff Calf

Recommended Imprint Location:
 Center Front

Recommended Imprint Type:
 Stamped Deboss

Standard Production Time:
 7 to 10 business days

NEW



Both Styles also available in
 Cow Nubuck.

NEW



25- CT300
Set of 4 Square Leather Coasters
in a Felt-lined Leather Tray

(Also available as single coasters - style CT200S)

Dimensions: 3.75" x 3.75"

Leather: Buff Calf

Recommended Imprint Location:
 Center Front

Recommended Imprint Type:
 Stamped Deboss

Standard Production Time:
 7 to 10 business days

26- CTBOX
2-Part Paper Box

26 2-Part black paper gift box. Package
 upgrade options for coaster sets.
 Holds 1 coaster set. Print pad or
 foil stamping available.

24



25





27



28

27, 29 & 31 - LIBX01
Paper Box with Leather Inlay
 Dimensions:
 Stock - 7 1/8" x 5" x 2"
 Custom Sizes & Colours Available
 Leather: Buff Calf
 Imprint Location: Center Front
 Imprint Type: Stamped Deboss
 Standard Production Time:
 Stock - 7 to 10 business days
 Custom - 6 to 8 weeks

28- BX002N
Hinged Nubuck Box
 Dimensions: 7 1/8" x 5" x 2"
 Leather: Cow Nubuck
 Imprint Location: Center
 Imprint Type: Stamped Deboss
 Standard Production Time:
 4 to 6 weeks

30- GP407
Leather Book Covers
 Dimensions: Customized
 to your Print Piece!
 Leather: Milled Buff
 Imprint Location: Bottom Right Corner
 Imprint Type: Stamped Deboss
 Standard Production Time:
 4 to 6 weeks

29



NEW



31



30



THINK LEATHER - THINK BEARDMORE

Call for more great styles!

32- BX002
Leather Hinged Box
(golf balls not included)

Dimensions: 7 1/8" x 5" x 2"
Leather: Buff Calf

Recommended Imprint Location:
Center Front

Recommended Imprint Type:
Stamped Deboss

Standard Production Time:
Stock - 7 to 10 business days
Custom Sizes & Colours -
4 to 6 weeks



Custom sizes & colours available!
See examples above & below.



32

33



33- GP410
Men's Golf Glove
Sizes: M,L,XL
Leather: Smooth Lamb
Imprint Location: Center Tab
Imprint Type: Stamped Deboss
Standard Production Time:
7 to 10 business days

37- GP426
Women's Golf Glove
Sizes: S,M,L
Leather: Smooth Lamb
Imprint Location: Center Tab
Imprint Type: Stamped Deboss
Standard Production Time:
7 to 10 business days

34- MG105
Leather Driving Gloves
Sizes: XS,S,M,L,XL
Leather: Deer Tan Cowhide
Imprint Location: Center Tab
Imprint Type: Stamped Deboss
Standard Production Time:
7 to 10 business days

35- WKG6CX
Fabric/Suede Work Glove
Sizes: M,L,XL
Leather: Cow Suede
Imprint Location: Cuff
Imprint Type: Embroidery
Standard Production Time:
7 to 10 business days

36- GP410C/GP426C
Custom Colour Matched
Men's & Women's Golf Glove
Sizes: S,M,L,XL
Leather: Smooth Lamb
Imprint Location: Center Tab
Imprint Type: Stamped Deboss
Standard Production Time: 4 to 6 weeks

34



35



NEW

36



NEW

37



38- MG702
Men's Leather Dress Gloves

Sizes: M,L,XL
 Leather: Smooth Lamb

Recommended Imprint Location:
 Center Cuff

Recommended Imprint Type:
 Stamped Deboss

Standard Production Time:
 7 to 10 business days

38



39



39 - MG701
Women's Leather Dress Gloves

Sizes: XS,S,M,L,XL
 Leather: Smooth Lamb

Recommended Imprint Location:
 Center Cuff

Recommended Imprint Type:
 Stamped Deboss

Standard Production Time:
 7 to 10 business days



40

40- HT-JC0107
Leather Journal Cover
 Dimensions: 9.5" x 7.75"
 Leather: Buff Calf
 Imprint Location: Lower Right Corner
 Imprint Type: Stamped Deboss
 Standard Production Time:
 7 to 10 business days

41- BA-KT08
Leather Key Tag
 Dimensions: 3.25" x 1.75"
 Leather: Veg Tan Cowhide
 Imprint Location: Center
 Imprint Type: Stamped Deboss
 Standard Production Time:
 4 to 6 weeks



41

43- HT -DM0702
Leather Desk Mat
 Dimensions: 17" x 13.25"
 Leather: Buff Calf
 Imprint Location: Lower Right Corner
 Imprint Type: Stamped Deboss
 Standard Production Time:
 4 to 6 weeks

42- HT-WT0703
Leather Bottle Tote
 Dimensions: 13" H (strap included)
 Leather: Buff Calf
 Imprint Location: Strap or Hang Tag
 Imprint Type: Stamped Deboss
 Standard Production Time:
 7 to 10 business days



42



43

44- HT- MT0704
Leather Magazine Tote
/Storage Basket

Dimensions: 16" x 11.5" x 5" (strap included)
Leather: Buff Calf

Recommended Imprint Location:
Strap or Hang Tag

Recommended Imprint Type:
Stamped Deboss

Standard Production Time:
7 to 10 business days



44



THINK PINK
THINK LEATHER

NEW



45



46

NEW

In our support of Breast Cancer Research, Beardmore Leathers will be donating a portion of the proceeds of all pink products to help find a cure.

45- BC-WT05

Leather Bottle Tote

Dimensions: 13" H (including strap)

Imprint Location: Strap or Hang Tag

46- BC-BX206

Leather Hinged Box

Dimensions: 7 1/8" x 5" x 2"

Imprint Location: Center Front

49- BC-KT06

Leather key Tag

Dimensions: 1.5" x 1.5"

Imprint Location: Center Front

47- BC-MT01

Leather Magazine Tote

Dimensions: 16" H (strap included)

Imprint Location: Strap or Hang Tag

50- BC-CC02

Leather Card/ID Holder

Dimensions: 4.25" x 2.75"

Imprint Location: Center Front

48- BC-CS04

Leather 4-Pack Coaster Set

in Felt-lined Tray

Dimensions: 3.75" x 3.75"

Imprint Location: Center Front

Leather (all styles): Buff Calf

Imprint type (all styles): Stamped Deboss

Standard Production Time (all styles): 4 to 6 weeks



47

NEW

NEW



49

NEW



50

48

NEW



“THE MEDIUM IS THE MESSAGE”

Marshall McLuhan*

Promotional products are indeed the medium to send important messages intended to influence our business associates, whether customers, potential customers or employees. In selecting corporate gifts or rewards, we all want to send a positive message and project a lasting quality image of ourselves and our company. There is no medium that has more to say than leather. It represents strength, character and determination combined with quality, prestige and value. The very term “branding” comes from putting your very own distinctive mark on hides “to distinguish” your property from others. No two “brands” were to be the same.

*Marshall McLuhan has been referred to as the “High Priest of Pop Culture” and the “Metaphysician of Media”. He is considered the leading prophet of the electronic age

Our Most Popular Imprint Methods:

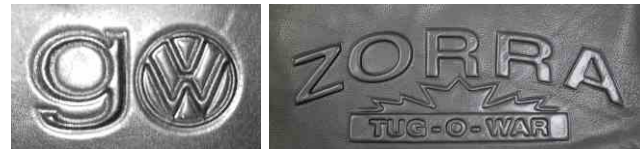
STAMPED DEBOSS

A die is created from a logo image and is then depressed into the leather or suede with high heat and pressure, so that the image sits below the product surface, sometimes referred to as blind stamping.



3D EMBOSS

The raising of an image on a product, accomplished by pressing the leather between concave and convex dies so that the image is raised above the surface of the jacket or accessory.



EMBROIDERY

A stitch file (DST) is created and the design is stitched onto the leather item through the use of high speed, computer controlled sewing machines. The design is reproduced with tightly-stitched thread. Fine detail may be difficult to achieve. Lamb leathers are not recommended.



Further Customization Options:

3D EMBOSS - ANTIQUED

The leather item is embossed (as above), the edges of the imprint are then sanded to give an aged look only suitable for Buffalo or Cowhide Leathers.

COLOUR FILL

The leather item is stamp debossed (as above) and then a coloured ink fill is applied into the deboss. Metallic fills also available.

HAND CUT LEATHER WORK

An outline is created from the design on to the leather hides. The leather is then hand cut, accentuated with embroidery (depending on the details of the logo) and stitched on to the leather item.

CUSTOM SNAPS & ZIPPER PULLS

Die-cast customize snaps & zipper pulls. Large volume orders only.

PAD PRINTING

A recessed surface is covered with ink. The plate is wiped clean, yet the ink remains in the recessed area of the plate. A silicone pad presses against the plate and pulls the ink out of the recesses. The pad then moves and presses directly against the leather product. Pad printing is excellent for imprinting small or unusually-shaped leather accessories.

SILKSCREENING

An image is transferred to the leather by ink squeegeed through a stenciled screen stretched over a frame. Screens are treated with a light-sensitive emulsion, then film positives are put in contact with the screens and exposed to light. The light hardens the emulsion not covered by the film, leaving a soft area on the screen for the squeegee to force ink through. Also referred to as screen printing.

WHY LEATHER? AND WHAT LEATHER?

Leather has been a combination of nurture and nature for mankind throughout recorded time. It has been a source of warmth and comfort used for garments and housing alike from the North American Indians to the galloping tribes of Mongols that swept across Asia. It has provided protection as armour for the Roman Legions to today's motorcyclist - used to hold your pants up and your money safe - to keep your hands and feet warm and dry always versatile and always valued. It has long provided a distinctive fashion statement related specifically to image from Brando to Dean - used in movies to represent character and strength used in life to represent value and prestige. The touch and smell of leather is special and appealing. It is a product that speaks to you and it has much to say. Words like "supple" and "premium", "quality" and "distinction - in a nutshell "simply the best".

But what leather to use?. There are many factors to consider when selecting your leather and they all affect the price and the quality and most important the message you send.

At Beardmore, we make it simple - we have the expertise and knowledge to help you find the right leather for your message and we do so committed to provide the best value for your budget. We are happy to provide product presentations supported by product knowledge and explanations to help reach the best decision for every project. We carry a wide range of 'in stock' products and we also love the challenge of customizing products to maximize the impact of each promotion or reward.

Buffalo

Extremely durable, heavier protective leather, mostly used in motorcycle apparel. Ideal for all decoration methods.

Buff Calf

Fine grain genuine Buffalo calf leather with a smooth finish. Ideal for business accessories and hard goods. Very durable. Stamped Deboss decoration method recommended.

Buffalo Nubuck

Buffed finish treatment to buffalo leather to give the leather a sueded surface feel. Ideal for all decoration methods.

Cow Nubuck

Premium cowhide in which the surface has been brushed to create a texture similar to velvet on leather. Stamped Deboss decoration recommended.

Cow Suede

Cowhide leather which has been buffed on the under side to create a "suede" nap finish. Stamped Deboss or Embroidery decoration recommended.

Deer Tan Cowhide

Luxury cowhide leather tanned and naturally milled to create the soft, supple feel of deerskin. Well suited for all decoration methods!

Goat Nappa

Top grain leather with a fine grain character which offers the combination of the durability of cowhide with the light weight comfort of lamb, ideal for everyday wear. Excellent choice for all decoration methods!

Milled Buff

Buffalo Leather naturally milled to create a soft, supple feel. Similar to Deer Tan Cowhide. Excellent choice for all decoration methods!

New Zealand Lamb

Luxury lamb. Lush, plump, buttery feel with a tight and distinct grain character suitable for men's and women's outerwear and better fashion garments. Stamped Deboss decoration only recommended.

Rugged Cowhide

Premium leather very durable with a distinctive textured "milled" appearance; excellent for the everyday outdoor, bags or accessories. Ideal for all decoration methods!

Shearling

Also known as sheepskin. Shearling is tanned with the wool of the sheep left on the warmest coat money can buy. Embroidery or Patch Appliqué decoration methods recommended.

Smooth Cowhide

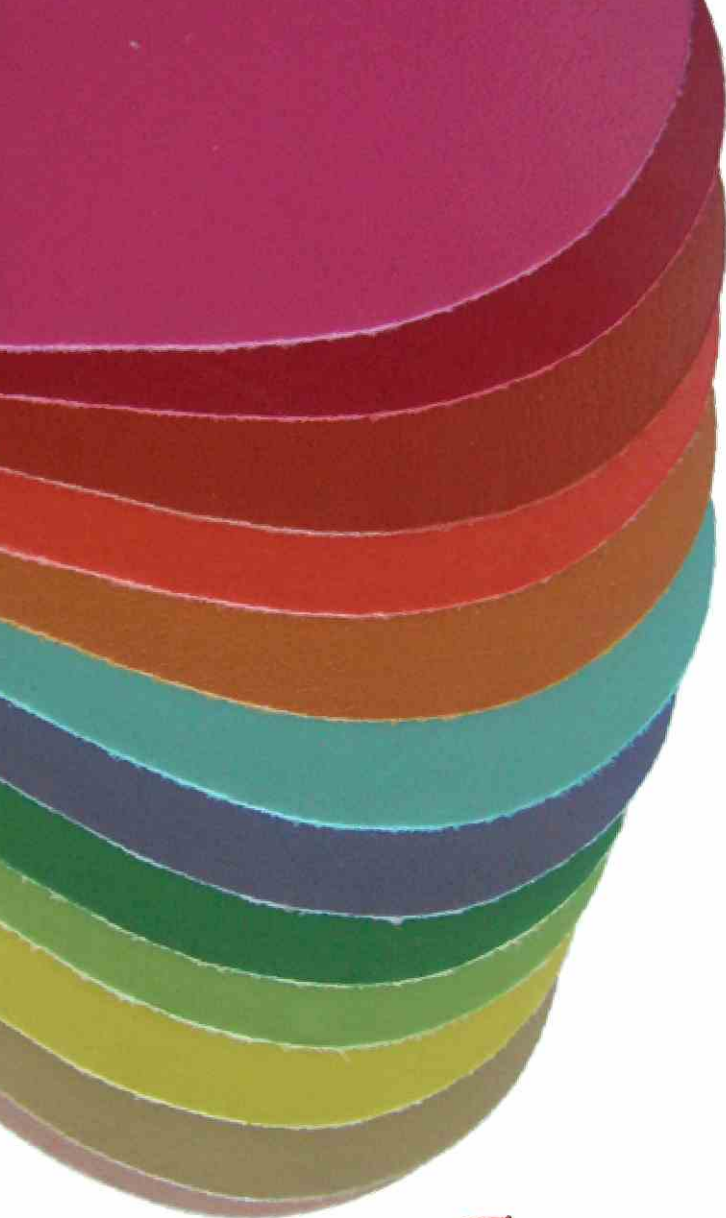
Top Grain leather, very durable with a smooth appearance; excellent for the everyday business accessories. Stamp Deboss decoration method recommended.

Smooth Lamb

Very soft, lighter-weight leather suitable for men's and women's outerwear and fashion garments; supple and comfortable to wear although not as durable as cowhide as it's much thinner and lighter in weight. Lamb has a very small, almost in-existent grain character which help in giving it a dressy appearance. Stamped Deboss decoration only recommended.

Veg Tan

Naturally tanned, this dense thick cowhide leather is ideal for hard goods and accessories. This leather can be dyed or left natural, natural finish darkens with age and use. Ideal for Stamped Deboss decoration.



THE IMPACT OF COLOUR

Leather has many great attributes as a prestigious image product. Colour is a great way to add punch and identity to your leather products. One of the most under utilized tools for leather products is colour. Many gravitate towards basic black in leather as the standard or have limited their choices to tans and browns as the more “natural” look of leather. These are classic leather looks and provide the foundation for Beardmore’s wide range of leather products. BUT in looking at a few of the many choices available, as shown on this page, there are great opportunities to select from a wide range of fantastic leather products and make them in your very own custom colour from the \$5.00(a) cardholder to the \$ 500.00(a) jacket.

Be bold! Be dramatic! Make a lasting impression! The undeniably strong impact of colour is available at Beardmore to enhance virtually all of our leather products.



Or select a custom stitch colour to accentuate an item with your corporate identity!

THINK OUTSIDE THE BOX!
THINK LEATHER - THINK BEARDMORE!

BEARDMORE

BETTER LEATHERS SINCE 1844
SPECIALISTS IN LEATHER & CORPORATE BRANDING
THINK LEATHER - THINK BEARDMORE

