



Branded Technology Experts

ASI 68288 • PPAI 112486 • UPIC MMLINE

Make MMI Your Flash Memory Supplier

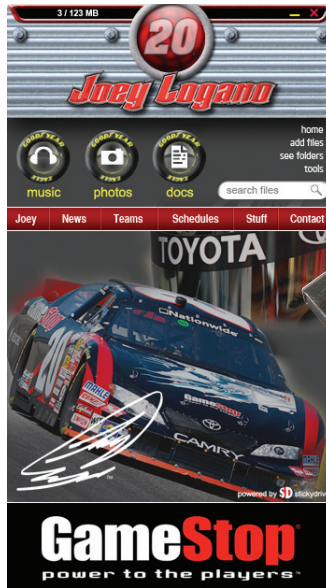
We have the building blocks to a successful advertising campaign!

- Hundreds of available styles
- Custom OEM services available
- Executive pens w/ flash memory
- StickyDrive™ value added software



2012

Product Catalog



comes to the brandable

STICKYDRIVE

powered by SD

StickyDrive

power to the players

power to the players

power to the players

power to the players

power to the players

power to the players

power to the players

power to the players

power to the players

power to the players

power to the players

power to the players



Table of Contents

New Products

Flash Memory

- *State side stock (24 hour service)*

Factory Direct Flash Memory

- *Swivel*
- *Leather*
- *Wood*
- *Credit Card*
- *Pens*
- *Custom OEM*
- *Value Added Software*

Mice

- *Retractable Mice*
- *Wireless Mice*

Audio

USB Hubs

Travel Accessories

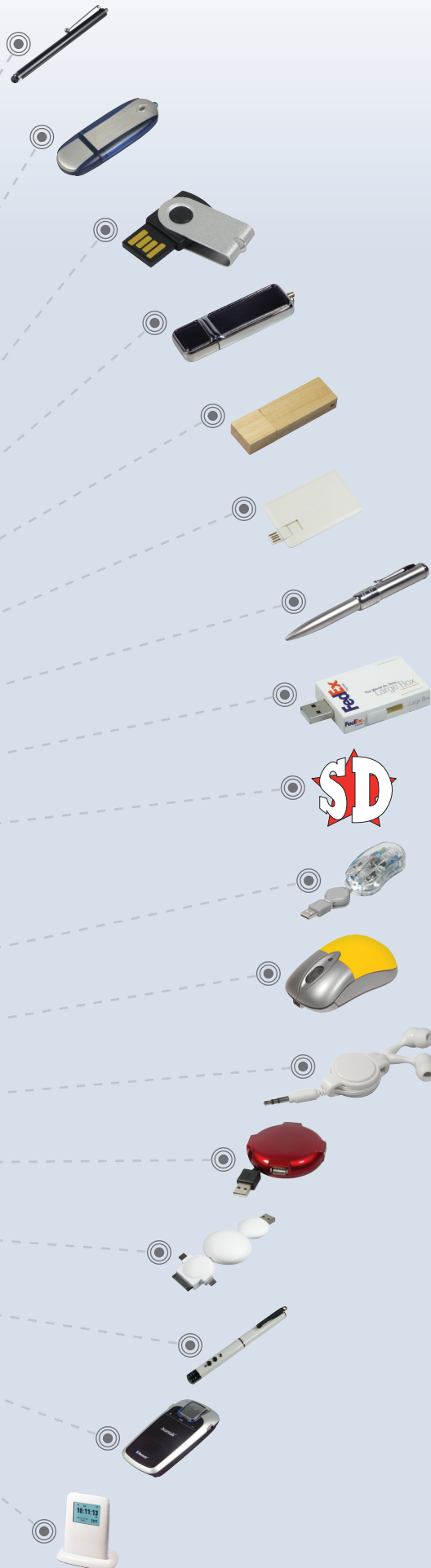
Computer Accessories

VoIP/Bluetooth

Digital Photo Frame

General Ordering Info

QCA



New Products

9365cc - Sync & Charge Cable



9360cc - Micro Sync & Charge Cable



7200stl - Touch Screen Stylus



9330cc - Light-up Cable Cell Charger



9332ccb - Portable Cell Charging Bank & LED Light



9331ccb - Portable Cell Charging Bank



9333cc - Exclamation Point Universal Charger



2060wom - Wireless Optical Mouse



2070wom - Wireless Optical Mouse



2075wom - Wireless Optical Mouse



2080wom - Wireless Optical Mouse



9391ips - iPhone Sleeve



Product quality
Product safety
Supply chain security
Social accountability
Environmental stewardship



Flash Memory (State Side Stock 24 Hour Service)

Our flash drives are, socially & environmentally compliant and RoHS compliant. Samsung & Hynix Tier 1 Grade A brand new chips are standard.

Stateside Drives:

- Numerous stock styles and color options available for rush production.
- Data pre-loading services available.
- Pad printing, laser engraving and laser marking decoration methods available.

1FMS



2FMS



7FMS



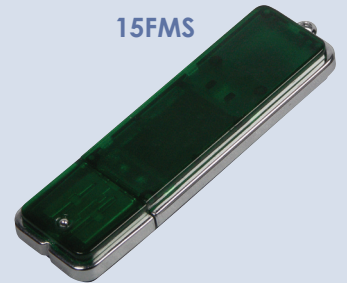
13FMS



14FMS



15FMS



1076FMS



1080FMS



1420FMS



Flash Memory (Factory Direct)

Our flash drives are, socially & environmentally compliant and RoHS compliant. Samsung & Hynix Tier 1 Grade A brand new chips are standard.

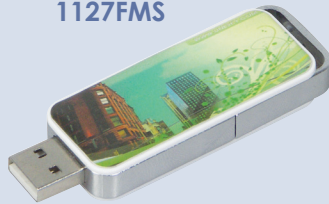
Factory Drives:

- Numerous styles, color options and custom designs to meet your specifications.
- Data pre-loading, password protection, encryption, auto-run, logo auto-run, custom icon, and non-erasable content services available.
- Pad printing, laser engraving, debossing, 4-color process and full wrap decoration available.

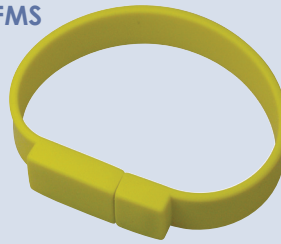
1063FMS



1127FMS



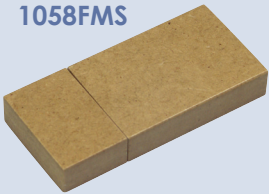
1470FMS



1010FMS



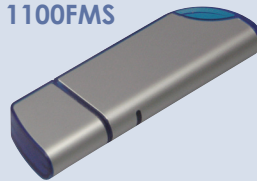
1058FMS



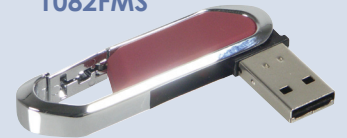
1062FMS



1100FMS



1082FMS



1145FMS



1475FMS



1067FMS



1375FMS



Product quality
Product safety
Supply chain security
Social accountability
Environmental stewardship



Flash Memory (Factory Direct)

Leather

1030FMS



1035FMS



1040FMS



1065FMS



1820FMS



Swivel

7FMS Anodized



7FMS Dome



1069FMS



Wood

1039FMS



1006FMS



1007FMS



1034FMS



1032FMS



8060PKG

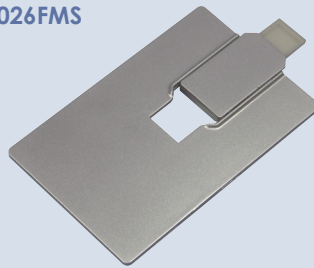


Credit Card

1021FMS



1026FMS



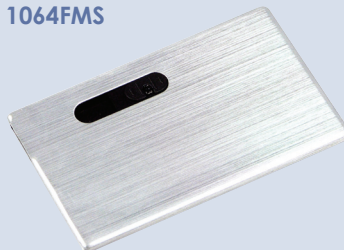
1027FMS



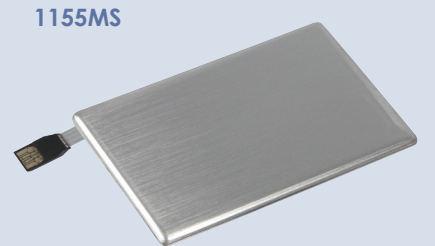
1038FMS



1064FMS



1155MS



Flash Memory (Factory Direct)

Pens

1013PWF



1045PEN



1461PEN



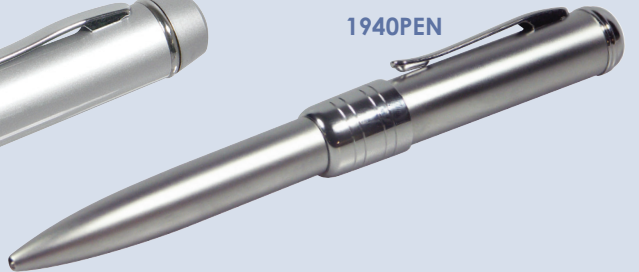
1570PEN



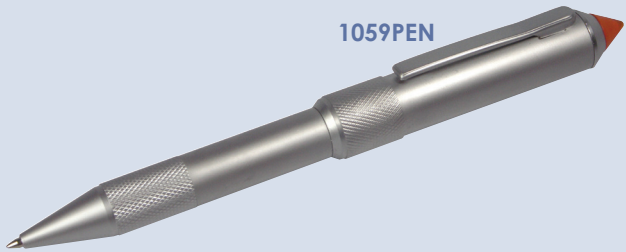
1460PEN



1940PEN



1059PEN



Custom OEM



Zune Flash Drive



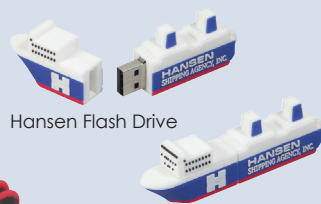
Michelin Flash Drive



FedEx Flash Drive



Tokico Flash Drive



Hansen Flash Drive



Inukshuk Flash Drive

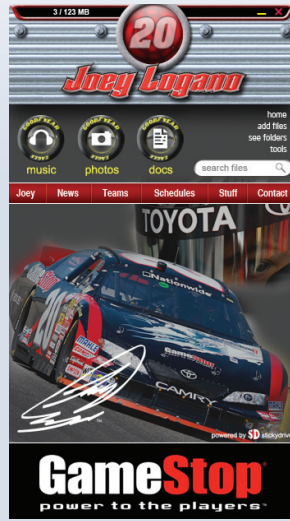
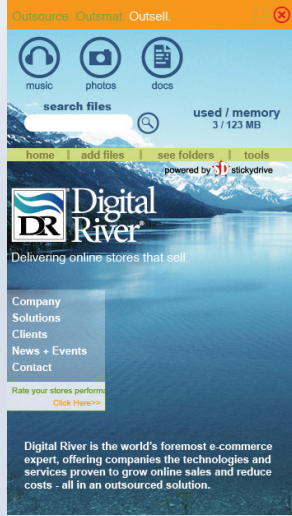
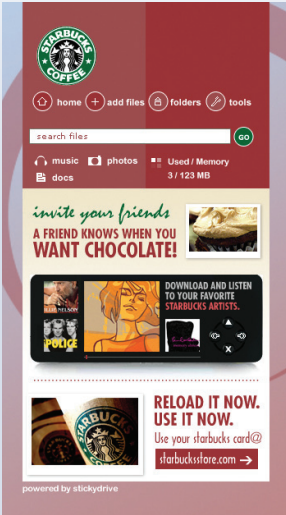


CAT Flash Drive

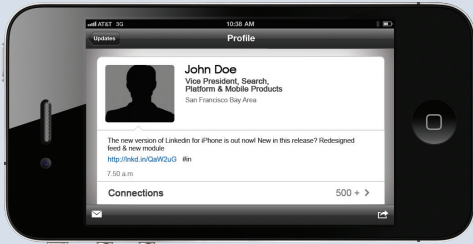


Product quality
 Product safety
 Supply chain security
 Social accountability
 Environmental stewardship





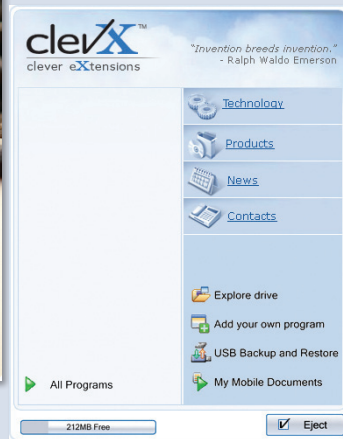
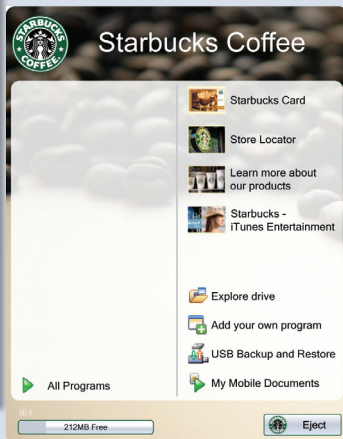
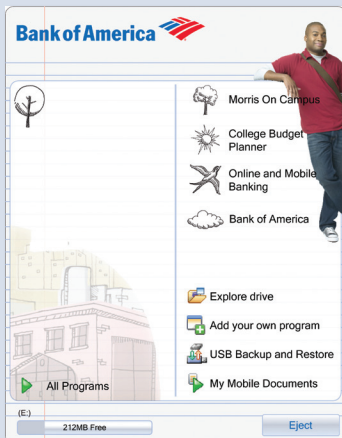
Phone Apps



4475UIR



Pre-loaded Splash Screen



Retractable Mice

335MO - Retractable Mini Mouse



750MO - Mouse House



2013MO - Retractable Optical Mouse



404MO - Mini Optical Mouse



2045MO - Optical Mouse



Product quality
Product safety
Supply chain security
Social accountability
Environmental stewardship

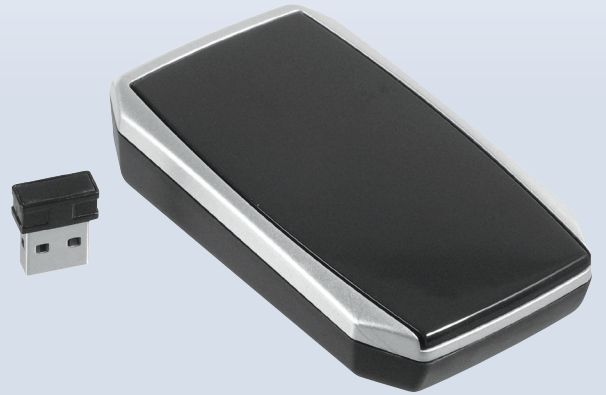


Wireless Mice

2037WOM - Wireless Optical Mouse



2047WOM - Wireless Optical Mouse



714SSM - Wireless Rechargeable Optical Mini Mouse



950WOM - Wireless Optical Mini Mouse



868WOM - Wireless Rechargeable Optical Mini Mouse



919WOM - Wireless Optical Mini Mouse



Audio

856RE - Retractable Earbuds



4212MP3 - MP3 Player



4105RE - Retractable Earbuds



4117SPK - Pop Up Speaker Super High Quality



9141IDS iPod Docking Station



4118SPK - Pop Up Speaker



4440SPK - Pop Up Speaker



4112SPK Magnetic Speaker



Product quality
Product safety
Supply chain security
Social accountability
Environmental stewardship



USB Hubs

185HUB - 4 Port Mini Round Hub



470HUB - Desktop Tape Dispenser & 4 - Port USB Hub



250HUB - 4 Port PopUp Glow Hub

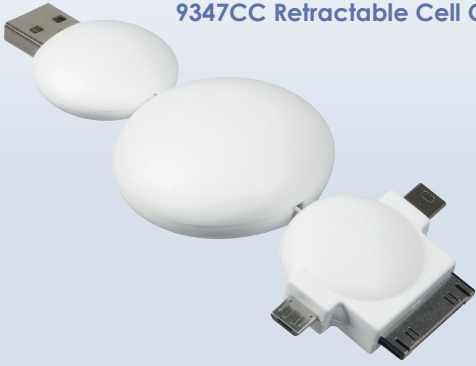


350HUB - 4 Port Slide Glow Hub



Travel Accessories

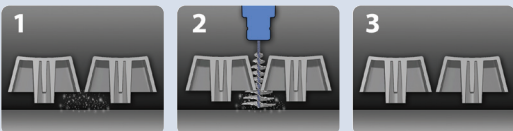
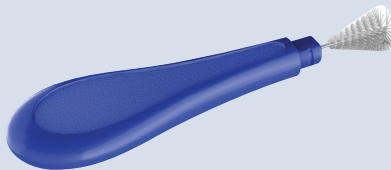
9347CC Retractable Cell Charger



9341SCC Solar Cell Charger



39TPA - Universal Travel Adapter



Product quality
 Product safety
 Supply chain security
 Social accountability
 Environmental stewardship



Computer Accessories

9397UFL - USB Powered Fan/Light



3301HUB - 10 Key w/ 2 Port Hub



9900ECO - ECO Button



360PR - PowerPoint Remote



9395CRL - USB Rechargeable Travel Light



330PR - PowerPoint Remote w/ Laser Pointer



7022BTK - Bluetooth Keyboard



865HUB - 3 Port Mini Round Hub w/ Built in Web key



VoIP/Bluetooth

9057WC - Web Camera



838VEB - VoIP Headset w/ Microphone



7170BSP - Bluetooth Speaker



839VEB - VoIP Earbuds



7176BSP Bluetooth Speakerphone



7173BSP - Bluetooth Speakerphone



Product quality
Product safety
Supply chain security
Social accountability
Environmental stewardship



Digital Photo Frame

9045DPF - Digital Photo Frame



9079DPF Photo Frame w/ Built-in Clock



9061DPF - Digital Photo Frame

9073DPF - Digital Photo Frame



Product Safety:

A QCA Certified Supplier has policies and procedures that are robust and able to detect and deter non-compliant product from shipping to customers. Corporate brand equity is also protected by reducing the need for product recalls, thus keeping news of any unsafe product out of the headlines. The processes include:

- A commitment to assuring consumer safety and brand security
- Design guidelines that cover legal and product performance requirements as well as raw material specifications
- A product approval protocol that assures only product meeting specified design guidelines is approved for manufacture
- Testing guidelines for internal evaluations and third-party assessments
- Mechanisms for assuring traceability
- Recall protocols

Product quality
Product safety
Supply chain security
Social accountability
Environmental stewardship



General Ordering Info

All prices include a one color pad imprint. Add \$62.50(V) for set up charge. Extra color/ position add an additional plate charge of \$50.00(V) plus \$0.45(V) running charge.

Acknowledgments: Faxed on all orders.

Artwork: Digital line art is preferred. Art may be created in Illustrator or Freehand (.ai or .eps) with fonts converted to paths. Media options are e-mail, CD-ROM or lomega Zip. For multi-color imprint color separation must be provided. Additional art charge is \$90.00/hour (V), billed in 15 minute increments, with 15 minutes as the minimum.

Cancellation and Return Policy: Contact MMI to obtain information on return authorization, instructions, and restocking charges. A copy of the bill of lading or a tracking number is required if approved. Unauthorized returns will be refused and sent back to the sender. No replacement credit will be issued for merchandise unavailable for return to factory. Product cannot be returned after 30 days. Imprinted orders are non-cancelable. Non-imprinted orders are billed for actual cost incurred, plus \$75.00(V) cancellation charge and 15% restocking fee. Policy subject to change. Refer to: www.mmiline.com for complete terms and conditions.

Custom Packaging: Is available. Please contact your sales representative for details.

Catalog: No charge for reasonable quantities, however shipping and handling charges may apply.

Claims: Title to merchandise passes to the buyer at the F.O.B. point (factory). Merchandise is shipped at buyers own risk and any claims for loss or damage must be filed against the carrier.

Color Matching: For custom ink color mixes please add \$35(V).

Drop Shipments: There is a \$10.00(V) drop shipment charge for orders requiring a separate sales order shipment document. Packages will have our labels with your company name and packing slip listing contents of package only.

Insurance: All shipments are insured for the full net value. If insurance is not desired please indicate in bold on the purchase order.

Less Than Minimum: Our published minimum is 25 - 100 pieces per model. For orders less than minimum, the 100-piece cost applies plus a less than minimum charge of \$35.00(V).

Liability: We assume no liability for non-fulfillment of an order caused by the inability to obtain raw materials: trade embargoes; strikes; acts of God; or any other causes beyond our control.

Measurements and Weights: Are approximate.

Over and Under-runs: Every effort will be made to ship exact quantity. We reserve the right to ship within 5% over or under specified quantity.

Payment Terms: For purchases on account company must be approved by our credit department. Limited open account terms on quantities listed of net 30 days are extended to firms with a satisfactory credit rating with ASI Credit Services. Unrated firms must establish credit with us. We accept Visa or Mastercard and Amex for sample order or payment. Overdue accounts will accrue 1 1/2% per month service charge.

Proofs: A digital E-mail proof is provided free of charge with each order. Spec samples and preproduction proofs are available for the product cost plus \$62.50(V) setup charge per color. Setup fee will be applied to purchase order once received.

Production Time: Please allow 7 to 10 working days after proof approval for most orders. Rush service is available, ask Sales Representative regarding details and fees.

Repeat Orders: A \$25(V) setup fee is charged for reorders requiring no change in artwork.

Terms and Conditions: All prices, specifications and terms of sale are subject to change without notice. All orders are accepted subject to availability of materials and component parts. MMI accepts no liability for inability to ship any orders due to material or part shortages. Always contact your account representative before placing your order.

Warranty: All items in our line have a Limited Warranty for 90 days against defects in material/workmanship under normal use. (Batteries and damage to plating excluded.) Please note that surface imprinting is not permanent and the imprinting durability cannot be guaranteed. Imprinted returns may be replaced with Non-imprinted items. All returned goods for credit must be freight prepaid.

Prices in catalogue are subject to change.
Consult www.mmiline.com for current pricing.