



BRENTWOOD™ 2012



**QUALITY OUTDOOR
ACTIVE GEAR**



SEE INSIDE
New
ULTIMATE
COLLECTION

BRENTWOOD INNOVATIONS



Among our many new products for 2012, is the Brentwood "Ultimate Collection." We have developed 5 products that are made to the highest specifications. These items are for the corporate buyer who appreciates quality and wants promotional products that are able to carry their image as well as their logo. The Ultimate Collection includes: the Ultimate Folding Camp Chair, the Ultimate Stadium Seat, the Ultimate Stadium Blanket, the Ultimate 20 Can Backpack Cooler and the Ultimate 24 Can Cooler. Watch for this icon as you look through the 2012 Brentwood catalog. In addition to our New Ultimate Collection, we are also introducing new camo products, new coolers, and new picnic blankets! We are excited for you to experience the 2012 Brentwood family of products.



5 YEAR NO LEAK LINER GUARANTEE: All coolers in this catalog designated with the Twin Seals No Leak Liner Symbol are guaranteed not to leak for 5 years. This means that the heat sealed seams will not leak under normal use. Guarantee does not apply to liners punctured through misuse or leaks from zippers when coolers are tipped over. Return the cooler to The Sourcing Department for replacement. (Product replacements after 30 days will be blanks.)



5 YEAR NO TEAR CHAIR CARRY BAG GUARANTEE: All 600D Poly chair carry bags designated with the NO RIP GUARANTEE Symbol are guaranteed not to tear for 5 years. Return the carry bag to The Sourcing Department for prompt replacement. (Product replacements after 30 days will be blanks.)



Brentwood expands colorVU™, our version of the full color heat transfer process. colorVU™ is available on products where the logo is designated throughout our catalog. See page 33 for details and pricing.

colorVU™ is an option when the traditional screenprinting technique does not meet the demands or expectations of a full color logo.

This decorating technique has the ability to print photo quality images, half tones, and full color logos.

2012 Table Of Contents

Backpacks	10, 27, 30	Duffles	24-26
Blankets	16-18	Garden Set	20
Camo	23-31	Golf	21
Chairs	1-7, 28, 29	Picnic	18
Coolers	8-15, 21, 28, 30, 31	Travel	22

THE "ULTIMATE" FOLDING CAMP CHAIR

MXCH

Seat 18" high / Overall height 38.5"

Tag rated 400lbs

600D Polyester

colorVU™
by BRENTWOOD
OPTIONAL



- Three reclining position settings
- Padded headrest
- Full length zippered back pocket
- Gray Rip-stop polyester with contrasting gray 600D trim
- Variable size cup holder with cinch cord for stability
- Adjustable arm rests
- Powder coated, gray hammer-tone steel frame
- Deluxe carry bag

Rip-stop polyester & 600D polyester
Adjustable carry bag shoulder strap
Padded area for carry comfort
Full-sized storage pocket on carry bag

Imprint area: 9"W x 7"H (back only)

Embroidery area: 6"W x 6"H (back only)

Color: Black/Gray



5-YEAR CARRY BAG
GUARANTEE
ALL 600D POLYESTER
CARRY BAGS



Carry bag w/padding & full pocket



Large full length back pocket



Three position recline

THE "BIG'UN" FOLDING CAMP CHAIR

CPXR

Seat Height: 18"

Seat Width: 22"

Overall Height: 36"

600D Polyester



Full length back pocket allows embroidery on CPCH, XRMO, MXCH, CPXR, XMCH

THE MOST COMFORTABLE FOLDING CHAIR!

colorVU™
by BRENTWOOD
OPTIONAL

Heavily Padded back and seat

Winged support for comfort

Heavy duty steel frame

Royal w/Black Trim

Black w/ Silver Trim

**TAG RATED 400LBS
TESTED OVER 500LBS**



5-YEAR CARRY BAG GUARANTEE
ALL 600D POLYESTER CARRY BAGS

FEATURES:

- Wide seat design
- Side winged supports for added comfort
- Zippered mesh armrest pocket
- Built-in cup holder
- Cushioned seat and headrest
- Zippered 600D polyester carry bag
- Large imprint area on back of chair
- Zippered back pocket for embroidery
- Tag rated at 400lbs.; Tested over 500lbs.

Imprint areas:

Front on Headrest area: 9"W x 3"H
(limited to 1 color imprint)

Back: 9"W x 7"H

Bag: 9"W x 5"H

Embroidery area :

Back: 6"W x 6"H

Colors: Black/Silver Trim, Royal/Black Trim, Red/Black Trim, Navy/Silver Trim



Red / Black Trim



Navy / Silver Trim

THE "TOP DOG" FOLDING CAMP CHAIR

CPCH

Seat Height: 18"

Seat Width: 21"

Overall Height: 36"

600D Polyester



Don't Miss These 7 Extra Benefits!



Back Storage Pocket
Store carry bag, poncho, books, etc.

"Finished" look front & back
Full-length double fabric on rear of chair

Embroidery is an option!
Zippered pocket on back allows clean embroidery

Fabric has a good "feel"
Quality fabric, not the "crackle" feel of other chairs

Heavy Duty Steel Frame
Our heavy steel frame is tag rated 350lbs. and lab tested over 500lbs (results available)

Two Cup Holders
Great for extra drink, cell phone, keys, etc.

Heavy duty 600D carry bag
Will last for years

Imprint areas:
Front headrest: 9"W x 3"H
(Limited to 1-color imprint)
Back: 9"W x 7"H
Carry bag: 9"W x 5"H

Embroidery area:
Back: 6"W x 6"H

Royal



5-YEAR CARRY BAG GUARANTEE
ALL 600D POLYESTER CARRY BAGS



Red



Green



Burgundy



Navy



Black

X-STREAM MESH CAMP CHAIR

XMCH

Seat Height 17¹/₂"
Seat Width 20"
Overall height 31¹/₂"
600D Poly/Mesh

colorVU™
by BRENTWOOD
OPTIONAL



Full length back pocket allows embroidery on CPCH, MXCH, XRMO, CPXR, XMCH



Red

PATENT PENDING
US & International



600D Carry Bag

- X-Stream design for greater support, comfort and sportier look
- Eye-popping bright colors
- 350lbs tag rating
- X-Stream mesh for full air flow
- 600D Polyester Carry bag



Blue



Silver



Green

Imprint area front or back: 9"W x 2¹/₂"H
(front limited to 1 color imprint)
Embroidery area: 5"W x 3"H

Colors: Blue, Red, Green, Silver



colorVU™
by BRENTWOOD
OPTIONAL

DIRECTOR'S CAMP CHAIR PROCHR

Seat Height: 16½"
Seat Width: 20"
Overall Height: 31"
600D Polyester

- Double armed chair
- Nylon carry bag
- Mesh cup holder
- 300lbs tag rating
- Double fabric back for embroidery



Nylon Carry Bag

Imprint area: 11"W x 4"H (2-color MAX)
Embroidery area: 6"W x 4"H

Colors: Royal, Red, Navy, Black

Red



Royal



Black



Navy

NITTY - GRITTY CAMP CHAIR

LCPCH

Seat Height: 16½"
Seat Width: 20½"
Overall Height: 31"
600D Polyester

- Double armed chair
- Lift off back for decoration
- 300lbs tag rating
- Nylon carry bag
- Double fabric back for embroidery
- Two cup holders

Imprint area: 9"W x 3½"H
Embroidery area: 4½"W x 3¼"H

Colors: Royal, Red, Navy, Black

colorVU™
by BRENTWOOD
OPTIONAL



Royal



Red



Navy



Black



Nylon Carry Bag

NEW

New
**ULTIMATE
COLLECTION**

"ULTIMATE" STADIUM SEAT

MXSS

Seat – 16" x 16" x 19"
600D Polyester

- Extra large seat and back
- Adjustable shoulder strap
- Folds flat, stays flat
- Large 1" gusseted pocket
- Adjustable reclining straps
- Thick closed cell foam padding won't bottom out
- Heavy duty support spines in backrest
- Heavy duty Rip-stop poly w/ 600D polyester

Imprint area: 7"W x 5" H
Embroidery area: 4"W x 4"H
Color: Black/Gray

19" High Back
Support For
"Ultimate"
Comfort

colorVU[™]
by BRENTWOOD
OPTIONAL



STADIUM SUPER SEAT

SSPB

Seat – 14" x 14"
600D Polyester

- 1" Dense foam padding for comfort
- Adjustable webbed side straps
- Detachable shoulder strap
- Webbed carry handles
- Seat attaching strap

Imprint area: 6"W x 6"H
Embroidery area: 3"W x 3"H
Colors: Royal, Black, Red, Green, Navy

Red



6

Royal

Black

Green

Navy

colorVU[™]
by BRENTWOOD
OPTIONAL



Royal



Black

colorVU
by BRENTWOOD
OPTIONAL

HAPPY TABLE

TB2CP

17" h x 18" x 18"

600D Polyester

- Convenient height!
- 2 cup holders
- Large zipper utility pocket
- Heavy Duty frame
- Adjustable stabilizing straps
- Nylon carry bag

Imprint area: 8"W x 3¹/₂"H

Carry Bag: 8"W x 3¹/₂"H

Embroidery area: 3¹/₂"W x 3¹/₂"H

Colors: Black, Royal



210D Nylon Carry Bag



Black



Natural

Back View

DIRECTOR'S CHAIR

DCH-30

Seat Height - 30"

Overall Height - 45"

Heavy duty canvas seat & back

- Hardwood construction w/natural finish
- Matching hardwood foot rest
- Heavy duty canvas fabric seat and back
- Double fabric chair back allows for embroidery

Imprint area: 10"W x 4"H

Embroidery area: 9"W x 4"H

Colors: Black, Natural

OUR MOST POPULAR FAMILY OF COOLERS!

FLEX COOLERS

COOLFL

13 1/2" x 8" x 6 1/2" (12-cans)

CLFLLG

13" x 10 1/2" x 7" (16-cans)

CLFLXL

15 3/4" x 10 1/2" x 9 3/4" (36-cans)

colorVU™
by BRENTWOOD

OPTIONAL

CLFLLG



CLFLXL



Red

Gray

CLFLXL

Royal



Navy

Forest Green



Wide mouth opening

colorVU™
by BRENTWOOD
OPTIONAL

COOLFL



Beach Blue



Black



Sea Green

- Wide mouth opening for easy access
- Holds 12, 16 or 36 cans plus ice (depending on size)
- Quilted 600D polyester outside shell
- Double heat sealed no-leak liner
- Padded handle wrap

Colors:

COOLFL - Black, Royal, Red, Forest Green, Navy, Beach Blue, Sea Green

CLFLLG - Black, Royal, Red, Forest Green

CLFLXL - Royal, Black, Gray

Embroidery areas:

COOLFL - 3"W x 3"H

CLFLLG - 3"W x 3"H

CLFLXL - 4"W x 4"H

Imprint areas:

COOLFL - 4"W x 3 1/2"H

CLFLLG - 4"W x 3 1/2"H

CLFLXL - 4 1/2"W x 4 1/2"H



All coolers on these two pages carry the Twin Seals No-Leak Liner Guarantee.

All coolers on this page have PEVA Lead Free Liners.



New
ULTIMATE
COLLECTION

ULTIMATE BACKPACK COOLER

MXBPCL

Size: 12" x 14" x 10"

600D Polyester



- Holds 20 cans plus ice
- Large, roomy zippered pockets on each side
- Large front slip pocket
- Heavy Duty PEVA Liner with Bottom board
- Heavy Duty, adjustable shoulder straps
- Heavy duty back pads
- Mesh top pocket
- 600D Polyester with 600D Rip-stop trim

Imprint area: 6"W x 4"H

Embroidery area: 3½"W x 3½"H

Color: Gray

Reinforced
padded
shoulder straps



colorVU™
by BRENTWOOD
OPTIONAL



Padded back for
"Ultimate" comfort

BACKPACK COOLER

CLBP

12¼" x 16½" x 7¾"

600D Polyester

- Holds 20 cans plus ice
- Double heat sealed no-leak liner
- Two mesh side pockets
- Large front gusseted pocket
- Padded backpack straps

Imprint area: 4½"W x 3"H

Embroidery area: 3½"W x 3½"H

Colors: Red, Royal, Green, Gray

colorVU™
by BRENTWOOD
OPTIONAL

Red



Royal

Gray

Green

ULTIMATE 24 COOLER

MXCL24

Size: 12" x 14" x 10"
600D Polyester



- Holds 24 cans plus ice
- Heavy duty PEVA Liner
- Hard base for stability and durability
- Large front zippered pocket & large slip pocket on back
- Inside top mesh pocket with Velcro® closure
- Large slip pockets on each end
- Adjustable shoulder straps with large shoulder pad
- Large comfortable carry handle
- Folds down with storage straps when not in use

Imprint area: 3½"W x 3½"H
Embroidery area: 3½"W x 3½"H
Color: Gray

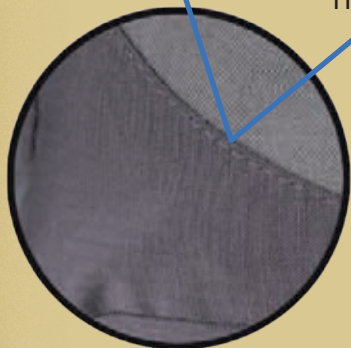
Main compartment holds 24 cans plus ice

Large comfortable carry handle



colorVU™
by BRENTWOOD
OPTIONAL

Heavy duty 600D Polyester
& Rip-stop Polyester



Folds flat for easy storage



All coolers on these two pages carry the Twin Seals No-Leak Liner Guarantee.

All coolers on this page have PEVA Lead Free Liners.



www.BRENTWOODLINE.com

ALL IN ONE COOLER

CHCLMSH

13" x 11½" x 9"

600D Polyester

- Holds 16 cans plus ice
- 3 large mesh pockets outside
- One large mesh pocket inside
- 3 handy fold-down can or cup holders inside front panel
- Adjustable shoulder strap
- Double heat sealed no-leak liner
- Handy "D" ring for keys or bottle opener

Imprint area: 4½"W x 3½"H

Embroidery area: 3"W x 3"H

Colors: Red, Royal, Gray



Heat sealed,
no-leak liner holds
16 cans plus ice

Front flap has
3-cupholders while
in open position

Shoulder strap with
slip resistant pad

Red

Dual outer mesh pockets
for extra storage



MACHO LUNCH COOLER

CLDCA2

12" x 12" x 9"

600D Polyester

- Holds 16 cans plus ice
- Top & bottom PEVA lined compartments
- Side mesh pocket
- Front zipper pocket
- Top compartment access with cooler open
- Double heat sealed no-leak liner

Imprint area: 4"W x 3"H

Embroidery area: 3" Diameter

Color: Black/Gray



colorVU™
by BRENTWOOD
OPTIONAL

JUMBO COOLER

CLTOT

17½" x 15" x 8"

600D Polyester

- Large main zippered compartment
- Foam insulation keeps cold for hours
- Shoulder length webbed handles
- Large slip pocket on front
- Ideal for picnic, shopping or diaper bag
- Folds flat for storage w/Velcro® closure
- Double heat sealed no-leak liner

Imprint area: 5"W x 5"H

Embroidery area: 3½"W x 3½"H

Color: Silver/Black



All coolers on these two pages carry the Twin Seals No-Leak Liner Guarantee.

All coolers on this page have PEVA Lead Free Liners.



WHEELED COOLER

WHCL

Size: 20"h x 13"w x 12"

600D Polyester



- Holds 30 cans plus ice
- Dry compartment in top
- Large front zippered pocket with key clip and zippered mesh pocket inside
- Large mesh pocket on each side of cooler
- Removable liner for easy cleaning
- Heavy duty trolley system with quiet tandem wheels
- Heavy duty rubberized handle

Embroidery area: 3"W x 3"H

Imprint area: 5"W x 4"H

Color: Royal

colorVU™
by BRENTWOOD

OPTIONAL



Heavy duty trolley system

Tandem in-line wheels

Stands Upright

BACK BY POPULAR DEMAND!

20 CAN BOX STYLE COOLER

COOL20

13" x 12" x 10"

600D Polyester/Rip-stop Nylon



- 5 year NO LEAK guarantee
- Holds 20 cans plus ice
- Dry storage area in top
- Quick access to main compartment
- Fabric – rugged 420 nylon with Diamond Rip-stop nylon
- Front zippered pocket
- Adjustable two-tone webbed shoulder strap
- PEVA Liner with double heat sealed seams

Imprint area: 3½"W x 3½"H

Embroidery area: 3"W x 3"H

Color: Royal



2" Deep
Dry Storage
Pocket

colorVU™
by BRENTWOOD
OPTIONAL



Quick Access
To Main
Compartment



All coolers on these two pages carry the Twin Seals No-Leak Liner Guarantee.
All coolers on this page have PEVA Lead Free Liners.



FLEECE BLANKET

BLLW

60" x 50"

220 GSM Polyester Fleece

- Web carry strap
- Black whip stitching

Colors: Black, Royal, Forest Green, Cardinal, Gray, Navy

Embroidery area: 8"W x 8"H



SUPER SOFT FLEECE BLANKET

BKCF

60" x 50"

280 GSM Polyester Coral Fleece

- Soft and cuddly
- Folded and hemmed edges
- Clear PVC pouch

Embroidery area: 8"W x 8"H

Colors: Navy, Wine, Green, Brown



BKCF Blanket comes in clear pvc zippered pouch.



“ULTIMATE” BLANKET

MXBKT

50" x 60"

Blanket Weight: 32oz. of "Ultimate" comfort



- Adjustable Shoulder strap
- Durable 600D Polyester pouch with heavy duty zipper
- Diamond quilted pattern on built-in pouch
- Black, gray and white checked fleece blanket
- Moisture resistant backing
- Use as comfortable seat cushion when folded



Embroidery area: 3½"W x 3½"H

Imprint area: 7"W x 5"H

Color: Black/Gray/White Checked



Diamond quilting



Blanket folds into its built-in zippered pouch. Pouch doubles as stadium cushion.

FLEECE STADIUM BLANKET/CUSHION

BLSTD

60" x 50"

240 GSM Polyester Fleece/Polyester

- Fleece blanket with polyester backing
- Zippered carry pouch
- Water resistant backing
- Handy carry handle

Colors: Royal/Black, Gray/Black

Imprint area: 5"W x 5"H (Front Pocket)
(Limited to One Color Imprint)

Embroidery area: 3½"W x 3½"H (Front Pocket)



Zippered carry pouch.



...Our products work weekends & holidays

PICNIC BLANKET

PNBKM / PNBKS /
PNBKCL / PNBKBW / PNBKPD

59" x 53"

Polyester

- Large picnic / stadium blanket
- Water resistant black backing
- Black zippered flap with handle
- Nicely complements many of our picnic bag and coolers

Imprint area: 8"W x 3"H

Embroidery area: 3½"W x 3½"H

**NEW
COLOR**



PNBKPD



PNBKM



PNBKCL

colorVU™
by BRENTWOOD

OPTIONAL



PNBKBW



PNBKS



PICNIC SET FOR FOUR

PNXGP4

12" x 15 1/2" x 8 1/2"

600D Polyester

Imprint area: 6"W x 3"H

Embroidery area: 3 1/2"W x 3 1/2"H

Color: Black

colorVU™
by BRENTWOOD

OPTIONAL

- Spacious insulated cooler compartment
- Wide-mouth cooler opening for easy access
- Includes drinkware, napkins, knives, forks, spoons, cheese board with cheese knife
- Cork screw / bottle opener
- Salt & pepper shakers
- Contrasting plaid liner
- Adjustable shoulder strap
- Available companion: PNBKBW checkered picnic blanket





GARDEN TOOL & TOTE SET

PNXG

12½" x 16" x 4½"
600D Polyester

- Large weed & seed compartment
- Includes: bypass pruner, weed popper, hand trowel, bulb trowel, forked spade, hand cultivator, knobby garden gloves, spray bottle and bail of garden tie

Imprint area: 5"W x 4"H
Embroidery area: 4½"W x 3½"H
Color: Green w/striped pockets



CASSEROLE KEEPER

CSKP

600D Polyester
15" x 11" x 3 ½"

- Holds 9"x 13" casserole dish (not included)
- Keeps food hot or cold
- Easy carry handles
- Large outside slip pocket with Velcro® closure
- Zipper top opens wide for easy cleaning

Imprint area: 5"W x 4"H
Embroidery area: 2½"W x 2½"H
Color: Gray/Black

colorVU™
by BRENTWOOD
OPTIONAL



DELUXE SHOE BAG

S602

14¹/₄" x 9¹/₂" x 4¹/₂"
600D Polyester

- Side mesh airflow vents
- Interior velour lining
- Two outside pockets

Imprint area: 3"W x 3¹/₂"H
Embroidery area: 3" Diameter
Color: Black



GOLF BAG COOLER

COOLGB

9" x 13" x 7"

Soft Imitation Leather

- Holds up to 8 cans plus ice
- 2 accessories pockets
- Adjustable shoulder strap
- Metal hardware
- Double heat sealed no-leak liner

Imprint area: 3¹/₂"W x 3¹/₂"H (1-color only)
Embroidery area: 3" diameter
Color: Black

GOLF VALET

GVC

10" x 7" x 3"
Soft Imitation Leather

- Large main compartment
- Cell phone pocket
- Range Finder pocket
- Handy Velcro® straps to mount on golf cart frame
- Includes tees & divot tool

Imprint area: 2¹/₂"W x 2"H (1-color only)
Color: Black



WEEKEND GARMENT BAG

GB600

39" x 23" x 3"

600D Polyester/210D Nylon

- 600D Front; Black Nylon back
- Front lined pocket
- Carry handles & handle wrap
- ID card holder
- Inside mesh pocket

Imprint area: 12"W x 8"H
Embroidery area: 6" Diameter
Color: Black



Bottom inside mesh pocket

colorVU[™]
by BRENTWOOD
OPTIONAL

DELUXE TRAVEL KIT

TK602

10" x 11¹/₂" x 4"

600D Polyester

- "U" shaped main compartment
- Multiple pockets and loops
- Metal hanging hook

Imprint area: 5"W x 4"H
Embroidery area: 3"W x 3"H
Color: Black





REALTREE™ ...REAL GOOD!



CAMO ALL IN ONE COOLER

CHCLAP

13" x 11½" x 9"

600D Polyester

- Holds 16 cans plus ice
- 3 large mesh pockets outside
- One large mesh pocket inside
- 3 handy fold-down can or cup holders inside front panel
- Adjustable shoulder strap
- Double heat sealed no-leak liner
- Handy "D" ring for keys or bottle opener

Imprint area: 4½"W x 3½"H

Embroidery area: 3"W x 3"H



colorVU™
by BRENTWOOD

OPTIONAL

CAMO 20 CAN COOLER

CL20AP

11½" x 13" x 8½"

600D Polyester

- Holds up to 20 cans plus ice
- Quick access top flap
- Top dry storage pocket
- Adjustable shoulder strap
- Double heat sealed no-leak liner

Imprint area: 5"W x 5"H

Embroidery area: 4" W x 4" H

2" Deep
Dry Storage
Pocket

Quick Access
To Main
Compartment



Leather-look
trim

colorVU™
by BRENTWOOD

OPTIONAL



THE MONSTER CAMO GEAR BAG

DRTMO

24½" x 13" x 14½"
600D Polyester



- Dual zippered main opening
- Zippered, gusseted front & side pockets
- Adjustable padded shoulder strap
- Webbed handles

Imprint area: 7" W x 5"H

Embroidery area: 4½"W x 4½"H



colorVU™
by BRENTWOOD

OPTIONAL



CAMO VOYAGER DUFFLE

D42AP

600D Polyester
22" x 11" x 9"

- Large main compartment
- Zippered front pockets
- Utility "D" ring
- Adjustable padded carry strap
- Web carry handle with wrap

Imprint area: 5"W x 4"H
Embroidery area: 2½"W x 2½"H

colorVU™
by BRENTWOOD

OPTIONAL

DOUBLE BARREL GEAR BAG

DBBAP

Size: 25" x 12¹/₂" x 12¹/₂"

600D Polyester

- Extra, adjustable strap to carry as backpack or as over-the-shoulder duffel.
- Zippered front pocket
- Carries extra long gear
- Webbed end handles for easy lifting
- Over-sized heavy duty zipper
- 3,000 cubic inches of packing space

Embroidery area: 3 ¹/₂"W x 3 ¹/₂"H

Imprint area: 6"H x 5"W



colorVU™
by BRENTWOOD

OPTIONAL

CAMO TRAVELER

CDTVL

24" x 11" x 10 ¹/₂"

600D Polyester

- 5 external pockets
- "U" shaped top opening
- Oversized main compartment
- Removable shoulder strap with pad
- Padded handle wrap

Imprint area: 8" W x 4"H

Embroidery area: 4" Diameter



colorVU™
by BRENTWOOD

OPTIONAL



This camo field bag will quickly become your favorite!

CAMO FIELD BAG

FBAP

Size: 20" x 10" x 8"

600D Polyester

- 8 external pockets for all your needs
- Portioned & lined main compartment
- Detachable insulated drink holder
- Adjustable, detachable shoulder strap
- Heavy Duty rubberized carry handle

Imprint area: 5"W x 3"H

Embroidery area: 3"W x 3"H



Detachable single can cooler attaches inside bag with Velcro® straps



Leather-look trim



CAMO SHELL BAG SBAP



Size: 13½" x 10" x 7"
600D Polyester

- Two large shell pockets
- One slip front pocket
- 2" adjustable webbed belt
- Bag foam insulated throughout for comfort and stability

Imprint area: 3"W x 3"H
Embroidery area: 2½"W x 2 ½"H



colorVU™
by BRENTWOOD
OPTIONAL

CAMO BACKPACK BPMPAP

12" x 18 ¼" x 7"
600D Polyester

- Large main compartment
- Front pocket has an organizer
- Zippered storage pockets
- Padded backpack straps
- 2 mesh water bottle pockets

Imprint area: 5"W x 4½"H
Embroidery area: 4½"W x 3"H



Leather-look
trim



colorVU™
by BRENTWOOD
OPTIONAL

CAMO GUN CASE

SGCAP

53" x 9"

600D Polyester

Imprint area: 5"W x 5"H

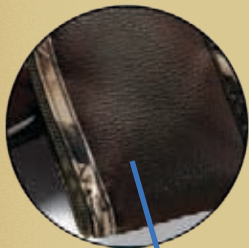
Embroidery area: 3 1/2"W x 3 1/2"H

- Long enough to fit most shotguns and rifles
- Protective quilted, padded lining
- Leather-look trim
- 7" x 7" x 1" gusseted side pocket
- Padded shoulder strap



Quilted Lining

Leather-look trim



CAMO SEAT COOLER

CSTC

Frame – 18" x 12" x 11"

Cooler – 13" x 10" x 9"

600D Polyester

- Steel frame
- Padded seat
- Holds 18 cans plus ice
- Zippered main compartment
- Double heat sealed no-leak liner



OPTIONAL



Imprint area: 9"W x 4"H

Embroidery area: 4"W x 4"H



All coolers on this page carry the Twin Seals No-Leak Liner Guarantee.

All coolers on this page have PEVA Lead Free Liners.



THE CAMO "BIG'UN" FOLDING CAMP CHAIR

XRMO

Seat Height: 18"
Overall Height: 36"
600D Polyester



**THE MOST COMFORTABLE
FOLDING CHAIR!**

- Wide seat design
- Side winged supports
- Heavy duty steel frame
- Two built-in cup holders
- Heavily padded seat and back
- Solid 600D zippered carry bag
- Tag rated at 400lbs.
- Independent lab tested over 500lbs.

colorVU™
by BRENTWOOD
OPTIONAL

Heavily Padded back and seat

Winged support for comfort

Heavy duty steel frame

Imprint area:
Front on headrest : 9"W x 3"H
(Limited to 1-color imprint)
Back: 9"W x 7"H
Bag: 9"W x 5"H
Embroidery area:
Back: 6"W x 6"H



**TAG RATED 400LBS
TESTED OVER
500LBS**

CFLC



CAMO FLEX COOLER

CFLC

13" x 10" x 7"

600D Polyester

- Wide mouth opening
- Holds 16 cans plus ice
- Double heat sealed no-leak liner

Imprint area: 4"W x 3½"H

Embroidery area: 3"W x 3"H



CAMO BACKPACK COOLER

CLBPAP

12" x 17" x 8"

600D Polyester

- Holds 20 cans plus ice
- Double heat sealed no-leak liner
- Top zipper for easy access
- Two mesh side pockets
- Large front gusseted pocket
- Padded backpack straps

Imprint area: 4½"W x 3"H

Embroidery area: 3½"W x 3½"H





CFLCAP

CAMO FLEX COOLER

CFLCAP

13" x 10" x 7"
600D Polyester

- Wide mouth opening
- Holds 16 cans plus ice
- Double heat sealed no-leak liner

Imprint area: 4"W x 3½"H
Embroidery area: 3"W x 3"H



XL CAMO FLEX

XLCLAP

15¾" x 10½" x 9¾"



- Holds 36 cans with ice
- Quilted 600d Polyester
- Double Heat Sealed no-leak PEVA liner
- Padded carry handle
- Adjustable shoulder strap
- Heavy Duty, over-sized zipper

Imprint area: 4 ½"W x 4 ½"H
Embroidery area: 4"W x 4"H



XLCLAP



All coolers on these two pages carry the Twin Seals No-Leak Liner Guarantee.

All coolers on this page have PEVA Lead Free Liners.





CAMO DRY TOP COOLER

CLDCMO
12" x 12" x 9"
600D Polyester

- Side mesh pocket
- Top and bottom PEVA lined coolers
- Front zipper pocket
- Top compartment access with cooler open
- Holds 16 cans plus ice
- Double heat sealed no-leak liner

Imprint area: 4" W x 3"H
Embroidery area: 3" Diameter



OPTIONAL



CAMO PERSONAL COOLER

CLPMO
11½" x 9½" x 7½"
600D Polyester

- Heavily insulated main compartment
- Holds 8 cans plus ice
- Removable adjustable shoulder strap
- Double heat sealed no-leak liner

Imprint area: 6"W x 3½"H
Embroidery area: 3½"W x 3½"H



OPTIONAL



Custom camouflage orders of 3,000 + units are available in the following patterns:



Realtree Hardwoods HD®, 2001, Realtree Hardwoods Green HD®, 2001, Realtree AP HD®, 2006, Realtree APG HD®, 2006, Advantage Wetlands Camo®, 1997 are copyrights of Jordan Outdoor Enterprises, Ltd., all rights reserved.



by BRENTWOOD

FOR CHAIRS, COOLERS, PICNIC, ETC.

Look for the colorVU™ logo throughout our catalog and create vibrant colorful logos, designs, and messages on our products that will not be ignored.

colorVU™ by Brentwood is a Heat Transfer Process that is available on select items throughout the catalog. Please look for the colorVU™ logo to indicate where the process is available.

Standard Production:

15 Business Days after paper proof approval.

Pricing:

100-249 piece order add: \$2.00 (V)

250+ piece order add: \$1.00 (V)

colorVU™ set up charge: \$50 (V)

Pricing is for heat transfer on one side only

For second side and/or location: Add: \$1.50 (V)

colorVU™ ARTWORK REQUIREMENTS

All art must be to size.

Raster Artwork (.psd, .tif)

LAYERED PHOTOSHOP FILES ONLY! NO FLATTENED IMAGES WILL BE ACCEPTED. PLEASE PREPARE PHOTOSHOP FILES WITH A TRANSPARENT BACKGROUND UNLESS IT SHOULD HAVE A BACKGROUND COLOR TO BE PRINTED.

Resolution must be 350dpi at final size.

Images should be created and saved at a resolution of 350dpi at the size the image will be printed.

(Please note: Increasing the size of an image will decrease the dpi of that image. DPI is not something that can be increased with a file; the resolution must be present to adjust the image.)

FONTS:

Illustrator or Corel Draw: All fonts used in the design must be converted to curves.

Photoshop: Rasterize/render all type layers before sending the file.

COLOR MUST BE CMYK!

4 – COLOR PROCESS ARTWORK

Vector Artwork (.ai, .eps, .cdr)

Vector artwork should be in Adobe Illustrator.

Placed images should be at a minimum of 350 dpi resolution.

Artwork that contains placed images must be at 350 dpi. If the image is any different, we will not proceed with that artwork.

All colors used in the artwork must be process colors and designated as such.

Any color that is listed as a spot color will not be included in the separated colors.

Colors should be CMYK. Not all RGB colors can be rendered in CMYK, therefore, you should make any necessary adjustments before sending your file.



by BRENTWOOD

TERMS & CONDITIONS

PRICING

PRICES ARE SUBJECT TO CHANGE WITHOUT NOTICE. CURRENT PRICING IS AVAILABLE BY CALLING BRENTWOOD OR ONLINE AT www.BRENTWOODLINE.com. UPDATED, ONLINE PRICES TAKE PRECEDENCE OVER THOSE ON ACCOMPANYING PRICE SHEET.

DECORATING INFORMATION

SET-UP / SCREEN CHARGES

\$50.00 (V) / Color / Location

Waived for exact reprints in less than 12 months.



ADDITIONAL COLOR / LOCATION RUN CHARGES

Up to 100 101-500 over 500 (3V)

\$.75 \$.65 \$.55

\$1.00 \$.85 \$.75 (chairs, tables, etc.)

Multi-color imprints, and some one-color artwork may require use of colorVU™ by Brentwood process. See page 33 for details.



INK COLORS: Stock colors are available. We will match your specified PMS color -- \$30 (V) -- as closely as possible, however an exact match cannot be guaranteed on colored products.

EMBROIDERY:

RUN CHARGES ARE ADDED TO CATALOG PRINTED PRICE

Run Charges (5V) 24 50 100 250 500+

Up to 6k Stitches: \$3.60 \$3.00 \$2.75 \$2.50 \$2.30

Add. 1k Stitches: \$.50 \$.50 \$.45 \$.45 \$.40

Minimum Run Charge: \$80 (V)

For metallic thread add: \$.25 / 1000 stitches (V)

For embroidery on chairs, tables, stools add: \$1.80 (V) per unit.

Digitizing Charge: \$100 (V) up to 6000 Stitches, \$20 (V) each additional 1,000 stitches; waived for orders over 500 units with under 6,000 stitches.



PROOFS/SPEC SAMPLES:

PAPER: B&W Free; COLOR \$20 (V) plus applicable art charges.

VIRTUAL: \$25 (V) plus applicable art charges.

SILKSCREENED: \$50 (V) / Color plus cost of merchandise, all art and delivery charges.

EMBROIDERY: \$50 (V) plus cost of merchandise, any tape / disk charges, and delivery charges.

CHANGE OF COPY-SILKSCREEN: \$55 (V)/color.

ART CHARGES: \$45 (V) per color unless camera-ready and color separated artwork that requires no touch-up is supplied. Artwork is not returned unless requested with order. Artwork will be printed at maximum size for the Imprint area unless your PO specifically requests otherwise.

ARTWORK: We reserve the right to determine what is camera-ready artwork. Send in .ai or .eps (saved as outlines / vector art) to art@sourcingdept.com specifying your company name and PO#. Send hard copy with PO for comparison.

LESS THAN MINIMUMS: Decorated: add \$60 (P). Blank: No charge if ordered in full case quantities; add \$20 (P) for quantities other than full case. Subject to absolute minimums.

ORDERING INFORMATION

PURCHASE ORDERS: All orders must be written. All changes must be confirmed in writing. Changes will affect the original ship date, and are subject to any incurred charges.

TERMS: Net 30 days to approved established accounts. We accept Visa, Mastercard, and American Express for payment when or before product ships. First orders and samples are billed to credit card.

BLANK GOODS: All products are available blank. Deduct \$1.00 (R) per unit from listed 1 color price (does not apply to embroidery orders). Minimum quantity is 1 case.

RANDOM / BLANK SAMPLES: EQP (less 20% for product if paid by C.C.) plus freight.

CO-OP PRICING: Available; requires program pre-approval.

CANCELLATIONS: Cancellations will be accepted only before production begins, and are subject to a \$50 (V) cancellation charge plus any incurred art or proof charges.

EXACT COUNTS: Although we attempt to ship the exact quantity ordered we reserve the right to ship and bill up to 5% over or under the specified quantity.

DISCLAIMER: All stated bag sizes are approximate. Finished goods may vary plus or minus 1/2 inch on any dimension. Due to variations in fabric finishing, we cannot guarantee exact color matches on repeat orders. Submission of your order constitutes an agreement based upon our Terms and Conditions regardless of terms and conditions on your purchase order. The logos, insignias, and trademarks shown as imprints on products in this catalog are used as examples only and are not for resale, nor do they imply endorsement by or for the trademark owners.

TRADEMARKS: By submitting artwork for imprinted orders, the purchaser warrants its authorization to use any included trademarks.

SHIPPING INFORMATION

METHOD: Our choice unless specified on order. Charges are added to invoice. Air shipments must be requested in writing. Goods are FOB TN warehouse. We are not responsible for delays by any freight carrier.

DROP SHIPMENTS: \$6.00 (V) for each location after the first. Full case quantities only.

RUSH ORDERS: Normal production time is 10 working days after art approval. Rush orders, if accepted, may be subject to a 15% upcharge and require special shipping authorization.

RETURNS: Product may only be returned with prior authorization. Unauthorized returns will not be accepted. Any claim must be made within 15 days of receipt. All returns subject to a 15% restocking fee.