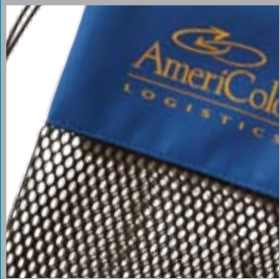




ASI 41630
PPAI 241397
UPIC BRAVEUSA
SAGE 51016



2012 Product Catalog
**BRAVE
U S A**
Leader in Custom Bag Design



TABLE OF CONTENTS

pages	1-2	Messenger Bags / Briefcases
	3-4	Waist Packs / Plancases
	5-6	Backpacks
	7-8	Backpacks / Hydration Backpacks
	9-10	Garment Bags / Coolers
	11-12	Blankets / Sports Related
	13-14	Sports Gear Bags / Miscellaneous Items
	15-16	Mesh Bags / Cosmetic Accessory Bags
	17-18	Safety Vests / Drawstring Bags
	19-20	Drawstring Bags
	21-22	Drawstring Bags / Tote Bags
	23-24	Tote Bags
	25-26	Tote Bags
	27-28	Terms and Conditions / Custom Process



BRAVE USA



FABRIC COLOR CHOICES



PMS equivalent colors are approximations
Fabric dye lots will vary

PATTERNED COLORS



* Sublimated fabrics require up charge

Brave USA is known as a domestic bag manufacturer and continues to be a leading supplier of domestic textile products both custom designed and from our catalog line. When quantity and lead time allow, we can import both catalog and custom products. Quality and delivery times are guaranteed to meet commitments.

Our Mission: One hundred percent customer satisfaction, every order, every customer, every time.

Domestic Manufacture. Our catalog line can be manufactured with your choice of fabric, colors, and accessories. Custom designed features can be added to any catalog product. Lead time is normally 3 weeks.

Import. Any bag in our catalog can be produced overseas for additional savings if quantities are sufficient. Custom bags can be designed in our domestic facility and manufactured overseas for pricing efficiency. Lead time 8-10 weeks.

Custom Design. Our extensive custom experience provides the capability to design and manufacture a wide variety of products including bags, cases, and industrial products. Custom products can be manufactured domestically with modest minimum quantities.

BOARDWALK
MESSENGER BAG
BC350



- Flap closure
- Adjustable shoulder strap
- Flat front pocket
- Large print area
- Available in 25 colors, patterned 600d material requires up-charge

	50	100	250	500	1000
	23.91	19.79	17.93	15.71	15.26



Overall dimensions 13.5 x 4 x 12" h
Imprint area 10 x 8"

DELEGATE
MESSENGER BAG
BC250



- Our most economical messenger bag
- Flap closure
- Adjustable shoulder strap
- Spacious main compartment
- Large print area
- Available in 25 colors

	50	100	250	500	1000
	17.98	14.85	13.37	11.72	11.38



Overall dimensions 15.5 x 3.5 x 11" h
Imprint area 10 x 4"

GRINDER
RECYCLED BANNER
MESSENGER BAG
BC352



- Utilizes used banner material destined for the landfill
- Use your company banners, or we can source them for you
- Requires 8 sq ft banner
- Fabric lined flap closure
- Adjustable shoulder strap
- Flat front pocket
- Large print area

	50	100	250	500	1000
	28.42	23.55	21.40	18.75	18.21



Overall dimensions 13.5 x 4 x 12" h
Imprint area 10 x 8"



MEDIATOR
SATCHEL MESSENGER BAG
BC633



- Laminated Jute/Burlap and 10 oz cotton canvas
- Canvas lined flap
- Open main compartment
- Adjustable shoulder strap
- Flap over design
- Earthy look and feel
- Made in USA

	50	100	250	500	1000
	30.31	25.12	22.85	20.02	19.45



Overall dimensions 12 x 3 x 14" h
Imprint area 4.5 x 7"

made in the USA



- Flap over design
- Zipper closure
- Adjustable shoulder strap
- Accessory pockets
- Self-fabric piping trim
- Available in 25 colors

50	100	250	500	1000
39.51	32.79	29.93	26.23	25.48

Overall dimensions 16 x 3.75 x 12”h

Imprint area 10 x 7”h

PARK AVENUE
FLAP OVER BRIEFCASE
BC9140



BUSINESS BAGS

made in the USA



- Full gusset construction
- Zipper closure
- Dual webbing carry handles
- Option: add detachable shoulder strap
- Available in 25 colors

50	100	250	500	1000
15.40	12.70	11.38	9.98	9.69

Overall dimensions 16.5 x 3.75 x 13”h

Imprint area 10 x 10”h

GREENE STREET
BRIEFCASE
BC9400



made in the USA



- Flat construction
- Zipper closure
- Webbing carry handle
- Available in 25 colors

50	100	250	500	1000
11.22	9.21	8.17	7.16	6.95

Overall dimensions 15.5 x 12”h

Imprint area 9 x 9”h

CENTER STREET
PORTFOLIO
BC100



made in the USA



- Flat construction
- Zipper closure
- Economical design
- Available in 25 colors

50	100	250	500	1000
6.98	5.82	5.37	4.71	4.57

Overall dimensions 10 x 5.5”h

Imprint area 7 x 4”h

LOOSE CHANGE
BANK DEPOSIT BAG
BC50



VALUE
WAISTPACK
WP750



- Zipper closure
- Adjustable waist strap
- Available in 25 colors

 made in the USA

50	100	250	500	1000
11.25	9.24	8.20	7.18	6.98

Overall dimensions 9 x 3 x 6" h

Imprint area 4 x 2" h

ECONOMY
WAISTPACK
WP740



- Zipper closure
- Adjustable waist strap
- Available in 25 colors

 made in the USA

50	100	250	500	1000
N/A	6.97	6.10	5.34	5.19

Overall dimensions 7 x 1.5 x 5" h

Imprint area 5 x 2.5" h

PENCIL BAG
PENCIL BAG
DB200



- Zipper closure
- Webbing wrist strap
- Great for school supplies
- Available in 25 colors

 made in the USA

50	100	250	500	1000
6.42	5.21	4.48	3.92	3.81

Overall dimensions 8 x 2 x 5" h

Imprint area 5 x 3" h

JOEY
3-RING BINDER POUCH
BC510



- Flat construction
- Zipper closure
- 3 brass grommets placed for standard ring binder
- Available in 25 colors

 made in the USA

50	100	250	500	1000
9.20	7.67	7.08	6.20	6.02

Overall dimensions 10.5 x 5.5" h

Imprint area 7 x 3.5" h

made in the USA 

- Our most popular blueprint case
- Adjustable up to 4.5" diameter
- Velcro closure
- Carry handle
- Available in 25 colors

50	100	250	500	1000
15.07	12.42	11.13	9.75	9.48

Overall dimensions 11.5 x 16.5"L open
 Imprint areas: Horizontal 8 x 2", Vertical 3.5 x 4"



ARCHITECT
 BLUEPRINT & PLAN CARRIER
 WD200

made in the USA 

- Adjustable from 4.5" to 9" diameter
- Accommodates large format blueprints and commercial plans
- Velcro closure
- Carry handle
- Available in 25 colors

50	100	250	500	1000
21.62	17.88	16.17	14.17	13.76

Overall dimensions 11.5 x 29"L open
 Imprint areas: Horizontal 8 x 3.5", Vertical 3.5 x 5"



CONTRACTOR
 LARGE BLUEPRINT &
 PLAN ORGANIZER
 WD203

made in the USA 

- Optimum protection from the elements
- Water repellent 200d fabric
- 1" webbing wrap-around carry handle
- Drawstring closure with cord lock
- Available in 15 colors of fabric and webbing
- Will accommodate plans up to 5" diameter

50	100	250	500	1000
14.96	12.33	11.05	9.68	9.40

Overall flat dimensions 34 x 8"
 Imprint area 5 x 5"



FOREMAN
 BLUEPRINT AND PLAN TOTE
 WD5036

made in the USA 

- Rigid tube gives excellent protection from weather and abuse
- 3" interior diameter x 36" long
- Zipper closure
- Carry handles
- Business card ID window
- Add optional adjustable/detachable shoulder strap \$3.50(v)
- Available in 25 colors

50	100	250	500	1000
31.51	26.12	23.78	20.83	20.24

Overall dimensions 3 x 37"
 Imprint areas: Between webbing 4 x 2.5"h,
 end as shown 8 x 3"



DEFENDER
 BLUEPRINT & PLAN TUBE
 WD3730

BRICKLAYER

MP3 BACKPACK
IBP25580



- Contoured padded shoulder straps
- Interior MP3/CD pocket
- Earphone port
- 3 Zipper compartments
- 2 Water bottle pockets
- Available in Black w/Olive Green

i m p o r t e d

50	100	250	500	1000
23.05	19.45	18.78	16.64	15.90

Overall dimensions 13 x 8 x 18" h

Imprint areas: Top 3 x 3" h, Pocket 3 x 3"

TRI-FORCE

BALLISTIC BACKPACK
IBP26093



- Contoured padded shoulder straps
- Interior MP3/CD pocket
- Earphone port
- 4 Zipper compartments
- 2 Mesh water bottle pockets
- Available in Black w/Crimson Red or Black w/Aqua Blue

i m p o r t e d

50	100	250	500	1000
26.49	22.36	21.59	19.13	18.28

Overall dimensions 13 x 10 x 18" h

Imprint area 4 x 2"

CLIFF HANGER

BACKPACK WITH REFLECTIVE TRIM
IBP26092



- Contoured padded shoulder straps
- Interior MP3/CD pocket
- Earphone port
- 3 Zipper compartments
- 2 zippered wing pockets
- Outside mesh pocket
- Available in Black w/Red or Black w/Gray

i m p o r t e d

50	100	250	500	1000
25.94	21.90	21.14	18.73	17.90

Overall dimensions 16 x 9 x 18" h

Imprint area 3 x 2.5"

made in the USA 

- Padded shoulder straps
- Front zipper pocket
- Carry handle
- Available in 25 colors and 1000s of color combinations

50	100	250	500	1000
43.91	36.45	33.31	29.19	28.36

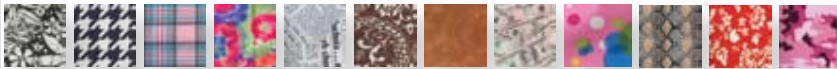
Overall dimensions 13 x 6.5 x 18" h
 Imprint areas: Top 4 x 6", Pocket 5 x 4"

made in the USA 

- Drawstring closures convert to shoulder straps
- Cinch style backpack
- Brass grommets
- Dye sublimated 600d material available in 100's of patterns

50	100	250	500	1000
17.73	14.64	13.17	11.54	11.21

Overall dimensions 13.5 x 15" h
 Imprint area 8 x 8"



made in the USA 

- Weather flap zipper closure
- Padded adjustable shoulder straps
- Gusseted front zipper pocket
- Easy grip zipper cord pulls
- Available in 25 colors

50	100	250	500	1000
34.09	28.27	25.76	22.57	21.93

Overall dimensions 11.5 x 6.5 x 15.5" h
 Imprint areas: Front 7 x 5", Pocket 8 x 2.5"

made in the USA 

- Perfect for high school & college students
- Padded shoulder straps
- Real suede leather bottom
- Main zipper compartment
- Gusseted front pocket with accessory pockets
- Flat zipper pocket
- Available in 25 colors

50	100	250	500	1000
82.20	68.36	62.77	55.00	53.43

Overall dimensions 13 x 6 x 18" h
 Imprint area 7 x 5"

CONTOUR
 BACKPACK
 BP940



PSYCHEDELIC
 YOUTH BACKPACK
 BP1315



ELEMENTARY SCHOOL
 BACKPACK
 BP50



BOMBER
 SUEDE BOTTOM BACKPACK
 BP56



RAVEN

DRAWSTRING CINCH BACKPACK
IBP430



- Dual drawstring top closure
- Matching drawstrings convert to backpack straps
- Light weight 210d durable fabric
- Re-enforced corners with grommet
- Available in black only

i m p o r t e d

	50	100	250	500	1000
	6.00	5.06	4.89	4.33	4.14

Overall dimensions 14 x 17”h,
Imprint area 10 x 10”

GALAXY

DRAWSTRING CINCH BACKPACK
IBP630



- Dual drawstring top closure
- Matching drawstrings convert to backpack straps
- Light weight 210d durable fabric
- Re-enforced corners with grommet
- Available in 15 colors. Red, black, dark green, kelly, yellow, gold, orange, purple, lavender, baby blue, hot pink, maroon, white, navy, royal, and crimson.

i m p o r t e d

	50	100	250	500	1000
	8.06	6.81	6.57	5.82	5.56

Overall dimensions 14 x 17”h
Imprint area 10 x 10”

COSMOS

DRAWSTRING CINCH BACKPACK
IBP830



- Dual drawstring top closure
- Matching drawstrings convert to backpack straps
- Light weight 210d durable fabric
- Re-enforced corners with grommet
- Available in 15 colors. Red, black, dark green, kelly, yellow, gold, orange, purple, lavender, baby blue, hot pink, maroon, white, navy, royal, and crimson.

i m p o r t e d

	50	100	250	500	1000
	9.08	7.66	7.40	6.56	6.26

Overall dimensions 17 x 20”h
Imprint area 10 x 10”

CINCH

DRAWSTRING BACKPACK
BP1417



- Dual drawstring top closure
- Drawstrings convert to backpack straps
- Light weight durable fabric
- Vinyl corner trim with brass grommets
- Available in 15 colors



m a d e i n t h e U S A

	50	100	250	500	1000
	15.22	12.55	11.24	9.85	9.57

Overall dimensions 15 x 18”h
Imprint area 10 x 10”

made in the USA



- 2 Liter (70 oz) reservoir
- Adjustable webbing shoulder straps
- Velcro closure
- Insulated

50	100	250	500	1000
41.47	34.42	31.44	27.55	26.76

Overall dimensions 6 x 17”h

Imprint area 4 x 10”h



WATERBOY
HYDRATION PACK
BC1040

made in the USA



- 200d Polyester fabric
- Two liter (70z) reservoir
- Drawstring backpack construction
- Insulated pocket for bladder
- Approx 15 solid colors available

50	100	250	500	1000
45.04	37.39	34.18	29.95	29.10

Overall dimensions 10 x 18”

Print Area 7 x 10”



CLOUDBURST
HYDRATION BACKPACK
BP1017

imported

- 2 Liter (70z) reservoir
- Deluxe padded shoulder straps
- Zippered main compartment
- Insulated pocket for bladder
- Interior pocket
- Outer mesh pocket
- Colors: Black, Silver, Navy, Royal
- Body color: Black

50	100	250	500	1000
33.82	29.98	29.24	26.13	25.53

Dim 8”x 3”x 18”h

Print Area 2.5”x 4”



MONSOON
HYDRATION BACKPACK
IBP301

DAY TRAVELER

GARMENT BAG
GB44



- Zipper shoe pocket
- Garment hook
- Webbing carry handles
- Available in 25 colors



made in the USA

50	100	250	500	1000
31.40	26.03	23.69	20.76	20.17

Overall dimensions 21 x 42" h

Imprint area 8 x 10" h

LONG JOHN

GARMENT BAG
GB2466



- Super long for those choir and band uniforms
- Also great for dresses and costumes
- Zippered main compartment
- Zippered shoe pocket
- 1" carry handles
- Interior webbing loop for hanging items
- Available in 25 colors



made in the USA

50	100	250	500	1000
43.11	35.79	32.70	28.65	27.83

Overall dimensions 24 x 66" h

Imprint areas: Front 8 x 10", Back 12 x 12"

UNIFORM

GARMENT BAG
GB81



- Economical design
- Garment hook
- Webbing carry handles
- Full length zipper
- Available in 25 colors



made in the USA

50	100	250	500	1000
27.18	22.52	20.45	17.92	17.40

Overall dimensions 22 x 38" h

Imprint area 8 x 10" h

BAND AIDE

GARMENT BAG
GB818



- Zipper shoe pocket
- Garment hook
- Full length zipper
- Available in 25 colors



made in the USA

50	100	250	500	1000
42.60	35.36	32.31	28.31	27.50

Overall dimensions 22 x 2 x 38" h

Imprint area 8 x 10" h

made in the USA



- Create a case for your specific items
- 1" webbing handles
- Business card holder
- Zipper closure
- 4 Rubber feet
- Custom die cut foam inserts not included
- Available in 25 colors
- Custom case sizes are our specialty

	50	100	250	500	1000
	45.11	37.45	34.24	30.00	29.14

Overall dimensions 10 x 8 x 4.5"h

Imprint area 6 x 5"h



CUSTOM
MEDICAL INSTRUMENT CASE
BC1014

COOLERS, ETC

made in the USA



- Holds a six pack of 12 oz cans
- Shoulder strap
- Fully insulated
- Available in 25 colors

	50	100	250	500	1000
	24.93	20.64	18.71	16.40	15.93

Overall dimensions 9 x 7 x 5"h

Imprint area 6 x 3"h



THE CUBE
SIX PACK COOLER
CC600

made in the USA



- Accommodates 1/2 gallon growler jugs
- Great product for Micro-Breweries
- Insulated bottom and sides
- Available in 25 colors

	50	100	250	500	1000
	19.80	16.36	14.77	12.94	12.57

Overall dimensions 5 x 5 x 10"h

Imprint area 5 x 5"h



BREWSKI
GROWLER BEER JUG COOLER
CC440

made in the USA



- 64 oz, 1/2 Gallon jug
- Clear or Amber glass
- Includes plastic cap
- Includes 1 color 1 position imprint
- 15 day production time
- \$80.00(v) screen set-up per color

	144	288	576	1152
GG64	11.33	10.13	8.87	8.62
GG64C	8.42	7.44	6.52	6.33

Overall dimensions 4.75 x 10.5"h

Imprint area 4 x 4"h

RAMBLER
64 OZ GLASS BEER GROWLERS
GG64



COMFY
FLEECE BLANKET
IBL200



- Whip stitched edges
- 13.5 oz anti-pill fleece
- Includes webbing strap
- Available in 12 colors: Black, Charcoal, Gray, Navy, Royal, Forest Green, Burgundy, Red, Purple, Orange, Yellow, and Pink.
- Blank pricing, embroidery available

i m p o r t e d

50	100	250	500	1000
14.92	12.60	12.16	10.78	10.30

Overall dimensions 50 x 60"
Imprint area on blanket 5 x 5"

CORAL
MICRO-PLUSH FLEECE BLANKET
IBL650



- Super soft and cozy 400 gsm micro fleece
- Bound edges
- Includes zippered vinyl pouch
- Available in 11 colors: Black, Heather Gray, Purple, Navy, Royal, Forest Green, Red, Pink, Brown, Cream, and Burgundy
- Blank pricing, embroidery available.

i m p o r t e d

50	100	250	500	1000
20.77	17.53	16.93	15.00	14.33

Overall dimensions 50 x 60"
Imprint area: 10 x 10" h

TRUE FAN
FLEECE PICNIC BLANKET
IBL400



- Black water repellent outer shell
- Webbing carry handles
- Dual velcro outer pockets
- Bound edges
- Available in 8 colors: Black, Charcoal, Navy, Royal, Forest Green, Red, Red/Black plaid, and Blue/Green Plaid.

i m p o r t e d

50	100	250	500	1000
23.54	19.87	19.18	17.00	16.24

Overall dimensions 50 x 60"
Imprint area: Pocket 6.5 x 5" h



DIE HARD
STADIUM BLANKET
BL500



- Water repellent outer shell
- Webbing carry handles
- Dual velcro outer pockets
- Bound edges
- Available in 1000's of color combinations
- You choose fleece and shell color

 m a d e i n t h e U S A

50	100	250	500	1000
50.20	41.70	38.15	33.43	32.48

Overall dimensions 50 x 60"
Imprint area: Pocket 8 x 6" h

made in the USA 

- High density foam cushion available in 1" or 2"
- Webbing carry handle
- Choose team colors
- Available in 25 colors

		50	100	250	500	1000
1"	SS445	19.62	16.21	14.63	12.82	12.45
2"	SS446	27.07	22.42	20.36	17.84	17.33

Overall dimensions 14 x 14"

Imprint area 10 x 10"



END ZONE
STADIUM CUSHION
SS445, SS446

SPORTS RELATED

made in the USA 

- Fits standard rounded back folding chairs
- Custom designs available
- Simple design
- Available in 25 colors


	50	100	250	500	1000
	7.98	6.52	5.68	4.98	4.83

Overall dimensions 18.5 x 9.75"

Imprint area 12 x 6"



VENUE
CHAIR BACK COVER
CB100

made in the USA 


- Get more exposure at sporting events
- Fits most standard folding chairs
- Fully adjustable to accommodate multiple sizes of chairs
- Quick installation with side release buckles
- Does not interfere with folding operation on standard chairs
- Available in 25 colors

	50	100	250	500	1000
	11.84	9.73	8.64	7.57	7.36

Overall dimensions 23.5 x 11.5"h

Large imprint area 12 x 9"

BACKDROP
CHAIR SKIRT
CB3030

made in the USA 

- Fits most banquet style chairs
- Quick installation
- Does not interfere with stacking standard chairs
- Includes 1 color imprint
- Available in 25 colors

	50	100	250	500	1000
	8.96	7.33	6.43	5.64	5.48

Overall dimensions 13.75 x 11"h

Large imprint area 10 x 8"

BANQUET
CHAIR BACK COVER
CB1311



BAT BOYBASEBALL BAT BAG
SB38

- Holds up to 3 bats in bottom compartment
- Large zippered gear compartment
- Fence snap hook
- Interior coin/key pocket
- Available in 25 colors



made in the USA

50	100	250	500	1000
50.64	42.06	38.49	33.73	32.76

Overall dimensions 38 x 8.5 x 11"

Imprint area 8 x 6"

VACATIONERTRAVEL BAG
TR6500

- Weather flap zipper
- Front zipper pocket
- Adjustable/detachable shoulder strap
- Available in 25 colors



made in the USA

50	100	250	500	1000
39.91	33.12	30.24	26.50	25.74

Overall dimensions 23 x 11 x 11"

Imprint area 5 x 5"

THE MONSTERFOOTBALL BAG
SE3618

- Great for football, hockey, or rugby gear
- "U" shaped zipper opening
- Front open pocket
- Adjustable/detachable shoulder strap
- Available in 25 colors



made in the USA

50	100	250	500	1000
66.05	54.91	50.35	44.12	42.86

Overall dimensions 36 x 18 x 18"

Imprint area 12 x 8"

THE GIANTBARREL BAG
BB3618

- Wrap around webbing handles
- Front open pocket
- Adjustable/detachable shoulder strap
- Available in 25 colors



made in the USA

50	100	250	500	1000
52.24	43.39	39.72	34.80	33.81

Overall dimensions 36 x 18"

Imprint area 12 x 8"

- High density polyethylene plastic case
- Solid plastic molded handle
- Nickel plated steel hardware with locking latches
- Custom die cuts inserts are available
- Additional sizes are available
- Includes embossed logo (die charges apply)
- Standard black, (limited colors available, up charge applies)



	Size	50	100	250	500
BA1410	14 x 10 x 6	283.87	236.42	217.90	190.93
BA1814	18 x 14 x 8	318.42	265.21	244.48	214.22
BA2210	22 x 18 x 10	348.96	290.67	267.97	234.80
*BA2212	22 x 18 x 12	495.15	412.48	380.42	333.33

*W/Pop-up Wheel assembly

(PQQR)



Approximate interior dimensions
Imprint area approx 10 x 6" h, varies with case size.



- Fits spare tires 25-26" diameter
- Custom sizes are available
- Rugged 18 oz Vinyl Coated Poly (truck tarp material)
- Vinyl piping trim is optional, up charge applies \$5.17(r)
- Black (colors available with up charge)
- Includes 1 color imprint

50	100	250	500	1000
30.09	24.94	22.69	19.88	19.31

Overall dimensions 26 x 8" deep
Imprint area 14 x 14" h

LUGNUT
SUPER TOUGH SPARE TIRE COVER
WC2608



BREEZE

MESH DRAWSTRING STUFF BAG
IST559



- Flat bottom construction
- Lightweight mesh fabric for ventilation and visibility
- Drawstring closure with cord lock
- Blank only

i m p o r t e d

50	100	250	500	1000
n/a	3.58	3.30	2.89	2.81

Overall dimensions 5 x 5 x 9"

BIG A

LAUNDRY BAG
LB2834



- Great for college students
- 1/4" nylon rope draw cord top closure
- 200d polyester fabric
- Available in 15 colors



m a d e i n t h e U S A

50	100	250	500	1000
19.51	16.12	14.55	12.75	12.38

Overall dimensions 28 x 34" h

Large imprint area 12 x 12"

DIRTY LAUNDRY

MESH LAUNDRY BAG
LB150



- Mesh fabric for ventilation and visibility
- Drawstring top closure with cord lock
- Front fabric pocket



m a d e i n t h e U S A

50	100	250	500	1000
24.27	20.09	18.21	15.96	15.50

Overall dimensions 30 x 34" h

Imprint area 7 x 7"

MESH DITTY

ACCESSORY BAG
SMALL DB260
LARGE DB812



- Mesh bottom for ventilation and visibility
- Easy grab zipper cord
- Fabric top for imprint



m a d e i n t h e U S A

	50	100	250	500	1000
DB260 Small	7.65	6.24	5.43	4.75	4.62
DB812 Large	8.05	6.58	5.73	5.02	4.88

Overall dimensions 5 x 9" h, 7.5 x 12" h

Imprint area 3.5 x 2.5" h, 5 x 3" h

made in the USA



- Unique design
- Zipper closure
- Webbing carry handle
- Available in 25 colors

50	100	250	500	1000
7.25	5.91	5.12	4.49	4.36

Overall dimensions 6 x 8 x 6" h

Imprint area 3 x 3" h



WEDGIE
ACCESSORY BAG
AC350

made in the USA



- Zipper closure
- Clear vinyl for great visibility
- Fabric top and bottom
- Available in 25 colors

50	100	250	500	1000
11.65	9.58	8.50	7.45	7.24

Overall dimensions 8 x 2.75 x 4.5" h

Imprint area 5 x 1.5" h



REACTION
COSMETIC BAG
AC150

made in the USA



- Zipper closure
- Clear vinyl window
- Webbing carry handle
- Available in 25 colors

50	100	250	500	1000
10.13	8.30	7.33	6.42	6.24

Overall dimensions 8.5 x 2 x 7" h

Imprint area: Back 5.5 x 5.5" h



FASHION FUN
MAKE-UP BAG
AC415

made in the USA



- Dual zipper closure
- Webbing carry handle
- Self fabric piping trim
- Available in 25 colors

50	100	250	500	1000
16.00	13.43	12.83	11.43	11.03

Overall dimensions 7.5 x 4 x 3.5" h

Imprint area: 5 x 2.25" h



ECLIPSE
TRAVEL MAKE-UP CASE
AC590

VALETMESH SAFETY VEST
ISV001

- Lightweight mesh
- 1" reflective trim on front and back
- Velcro front closure
- One size fits most
- Fluorescent orange and Lime green
- Blank only

i m p o r t e d

	50	100	250	500	1000
	7.09	5.91	5.45	4.78	4.64

CROSSING GUARDMESH SAFETY VEST
ISV002

- Cool polyester mesh
- 2" HI-VIS vinyl reflective trim on front and back
- Velcro front closure
- One size fits most
- Fluorescent orange or yellow
- Also available in "tear-away" version
- Blank only

i m p o r t e d

	50	100	250	500	1000
	12.68	10.70	10.33	9.16	8.75

HIGH VISIBILITYSAFETY VEST
ISV003

- Meets ANSI/ISEA class 2 requirements
- Lightweight 100% polyester
- 1.5" reflective trim on front and back
- Velcro front closure
- Available in L to 3XL
- Fluorescent orange or yellow

i m p o r t e d

	50	100	250	500	1000
	20.31	16.67	16.00	14.01	13.75

*Imprint area: Back 9 x 9", Front 4 x 4"***CONSTRUCTION**DELUXE SAFETY VEST
ISV1015

- Meets ANSI/ISEA class 2 requirements
- 100% polyester
- 1" reflective trim on front and back
- Zipper front closure
- 4 Pen pockets and 3 additional front pockets
- 2 Interior pockets
- Available in M to 6XL
- Bright fluorescent orange or yellow
- 4XL - 6XL incur sizing upcharge .80 (R)

i m p o r t e d

	50	100	250	500	1000
	24.00	19.70	18.91	16.56	16.25

Imprint area: Back 9 x 9", Front Pocket 4 x 4"

i m p o r t e d

- Double drawstring construction
- Gold tassel drawstrings
- Fits standard wine bottles
- Colors available: Burgundy, Black, Red, Purple, Royal, Forest Green, and Navy with silver tassels
- Blank
- Embroidery available (max area 2 x 2")

	50	100	250	500	1000
	9.75	8.23	7.95	7.04	6.73

Overall dimensions 6 x 13" h

VELVET WINE
DRAWSTRING BAGS
IV613



VELVET
DRAWSTRING BAGS
IV340, IV460, IV690

- Double drawstring construction
- Colors available: Purple, Black, Gold, Silver, Royal Blue, Navy Blue, Forest Green, Red, Olive, Brown, Burgundy, and Ivory
- Satin ribbon drawstring
- 3 sizes available
- Blank
- Imprinting available, call for pricing

	50	100	250	500	1000
IV340	1.78	1.51	1.45	1.29	1.23
IV460	2.12	1.79	1.73	1.53	1.46
IV690	3.17	2.68	2.58	2.29	2.19

Dim (3" x 4" h)

Dim (4" x 6" h)

Dim (6" x 9" h)



m a d e i n t h e U S A



- Drawstring closure with cord lock
- Flexible nylon fabric
- Overall dimensions 6 x 2.5 x 9" h
- Custom sizes available
- Available in 15 colors

	50	100	250	500	1000
	n/a	5.39	4.64	4.07	3.95

Overall dimensions 6 x 2.5 x 9" h

Imprint area 4 x 5"

SMALL STUFF
DRAWSTRING BAG
ST175



i m p o r t e d

- Double drawstring construction
- Colors available: Purple, Black, Silver, Royal blue, Baby blue, White, Gold, Burgundy, Red, Brown, Athletic Gold, Emerald Green, Lime, Orange, Turquoise, Pink, Hot Pink, and Lavender
- Satin ribbon drawstring
- 4 sizes available
- Includes 1 color imprint

	50	100	250	500	1000
IS340	N/A	2.48	2.14	1.72	1.67
IS460	N/A	2.73	2.36	1.91	1.86
IS580	N/A	3.06	2.67	2.18	2.12
IS690	N/A	3.27	2.87	2.35	2.29

Dim (3" x 4" h)

Dim (4" x 6" h)

Dim (5" x 8" h)

Limited colors Dim (6" x 9" h)

Imprint area (2" x 2")

Imprint area (2" x 2.5")

Imprint area (3" x 3")

Imprint area (4" x 4")

SATIN
DRAWSTRING BAGS
IS580



NATURAL COTTON DRAWSTRING BAGS



made in the USA



	250	500	1000	2500	5000	10000	Dimensions	Imprint area
HC340	2.35	1.88	1.42	1.22	1.08	1.04	3 x 4"	2.5 x 2.5"h
HC460	2.55	2.04	1.55	1.32	1.17	1.13	4 x 6"	3 x 3.5"
HC570	2.75	2.20	1.67	1.43	1.26	1.22	5 x 7"	3.5 x 4"
HC580	2.85	2.28	1.73	1.48	1.31	1.27	5 x 8"	3.5 x 4.5"
HC680	3.00	2.40	1.82	1.56	1.38	1.33	6 x 8"	4.5 x 4.5"
HC610	3.20	2.56	1.94	1.66	1.47	1.42	6 x 10"	4.5 x 6"
HC810	3.60	2.88	2.18	1.87	1.66	1.60	8 x 10"	6 x 6"
HC812	3.85	3.08	2.33	2.00	1.77	1.71	8 x 12"	6 x 6"
	P	P	Q	Q	R	R		

- ▶ Single drawstring
- ▶ Natural cotton color
- ▶ Lightweight 4 oz cotton muslin material
- ▶ Economical packaging
- ▶ Assorted Sizes

HEAVY WEIGHT NATURAL COTTON DRAWSTRING BAGS



made in the USA



	50	100	250	500	1000	Size	print area
HWC570	n/a	3.24	2.66	2.33	2.26	5 x 7"	3.5 x 4"
HWC680	n/a	3.39	2.80	2.45	2.38	6 x 8"h	4.5 x 4.5"
HWC812	n/a	3.85	3.22	2.82	2.74	8 x 12"h	6 x 8"
HWC915	n/a	4.30	3.64	3.19	3.10	9 x 15"h	7 x 12"
HWC1218	n/a	5.21	4.48	3.92	3.81	12 x 18"h	10 x 12"

- ▶ Single white drawstring
- ▶ Natural cotton color
- ▶ Heavy weight 6-7 oz natural cotton material
- ▶ Economical packaging
- ▶ Assorted Sizes (Custom sizes available)
- ▶ Made in USA

WEEDY

100% NATURAL COTTON
DUAL DRAW CORD BAGS

imported



	50	100	250	500	1000	Size	print area
IDD340	N/A	2.55	2.01	1.76	1.71	3 x 4"h	2.5 x 2.5"
IDD460	N/A	2.91	2.35	2.06	2.00	4 x 6"h	3 x 3.5"
IDD580	N/A	3.09	2.52	2.21	2.14	5 x 8"h	3.5 x 4.5"
IDD690	N/A	4.03	3.38	2.97	2.88	6 x 9"h	4 x 5.5"
IDD812	N/A	5.18	4.45	3.90	3.79	8 x 12"h	5 x 8"
IDD1016	N/A	6.61	5.76	5.05	4.90	10 x 16"h	7 x 12"

- ▶ Environmentally friendly materials
- ▶ Flat construction
- ▶ Dual draw cord top closure
- ▶ Weedy 5.0 oz natural cotton muslin fabric
- ▶ 6 sizes available

PQQRR

i m p o r t e d

- Rough 4.5 oz burlap/jute material
- All natural fiber/material
- Flat construction
- Dual draw cord top closure
- Distinctive burlap aroma
- Bold logos reproduce best on this material (Minimum text height ¼")
- 5 sizes available

	50	100	250	500	1000	Size	print area
IRB355	n/a	3.06	2.67	2.18	2.12	3.5 x 5"	2.5 x 3"
IRB560	n/a	3.61	3.17	2.62	2.55	5 x 6"h	3 x 3"
IRB590	n/a	4.33	3.85	3.21	3.12	5 x 9"h	3 x 6"
IRB812	n/a	4.64	4.13	3.46	3.36	8 x 12"h	5 x 8"
IRB1214	n/a	5.18	4.63	3.90	3.79	12 x 14"h	8 x 10"



RUSTLER
ROUGH BURLAP
DRAWSTRING BAGS

DRAWSTRING BAGS

m a d e i n t h e U S A



- 10 oz common burlap
- Flat construction
- No top closure
- Typically used for onion or potato storage
- Also use for gunny sack races at picnics
- Bold logos reproduce best on this material
- Distinctive burlap aroma

50	100	250	500	1000
8.96	7.33	6.43	5.64	5.48

Dimensions 23 x 39"h
Imprint area is 15 x 15"h

SPUD
LARGE BURLAP POTATO SACK
ST2339



i m p o r t e d

- Full Gusset Construction
- Zipper closure
- Laminated Burlap Material
- Natural Jute Color with brown accent trim

50	100	250	500	1000
7.08	5.52	4.76	4.17	4.05

Overall dimensions 9.5 x 3.5 x 5.5"h
Imprint area 6 x 3"h

MAUI
JUTE/BURLAP ACCESSORY BAG
1B835



COLORED JUTE

DRAWSTRING BAGS
IB570 AND IB610



- ▶ Double drawstring construction
- ▶ Assorted colors
- ▶ Jute/Burlap fabric
- ▶ Imported
- ▶ IB350: Colors available: Natural, Orange, Olive, Forest, Burgundy, Purple, and Lavender
- ▶ IB560: Colors available: Natural burlap only
- ▶ IB570: Colors available: Natural, Orange, Olive, Forest, Burgundy, Purple, and Lavender
- ▶ IB610: Colors available: Natural, Orange, Olive, Forest, Burgundy, Purple, and Lavender
- ▶ Minimum text height ¼"

i m p o r t e d

	50	100	250	500	1000	Dimensions	Imprint area
IB350	N/A	3.27	2.69	2.35	2.29	3 x 5"	2 x 2.5"
IB560	N/A	3.73	3.10	2.72	2.64	5 x 6"	3 x 3"
IB570	N/A	3.79	3.16	2.77	2.69	5 x 7"	3 x 4"
IB610	N/A	4.36	3.69	3.24	3.14	6 x 10"	4 x 6"

BURLAP

DRAWSTRING BAGS



m a d e i n t h e U S A



	50	100	250	500	1000	Dimensions	Imprint area
HB460" Small Parts"	N/A	4.79	4.08	3.58	3.48	4 x 6"	2.5 x 3"h
HB570 "Sweet Treats"	N/A	5.00	4.28	3.75	3.64	5 x 7"	3 x 4"
HB680 "Coffee Bean"	N/A	5.15	4.42	3.87	3.76	6 x 8"	4 x 5"
HB810 "Pine Cone"	N/A	5.73	4.95	4.34	4.21	8 x 10"	5 x 7"
ST1017 "Big Stuff"	N/A	6.91	6.04	5.29	5.14	10 x 17"	7 x 10"
ST1518 "Biggie Bag"	N/A	8.58	7.58	6.64	6.45	15 x 18"	10 x 10"

- ▶ Single drawstring
- ▶ Natural Jute color
- ▶ Heavyweight Burlap fabric
- ▶ Assorted Sizes
- ▶ Minimum text height ¼"

CLASSY STUFF

BURLAP JUTE DRAWSTRING BAG
ST913



- ▶ All Natural Fiber Construction
- ▶ Dual drawstring
- ▶ Natural Jute color
- ▶ Heavyweight Burlap fabric
- ▶ Unique Design
- ▶ Minimum text height ¼"



m a d e i n t h e U S A

50	100	250	500	1000
10.67	8.76	7.75	6.79	6.60

Overall dimensions 8 x 12"h

Imprint area 5 x 7"h


made in the USA 

- Rustic looking laminated burlap fabric
- Natural color
- Velcro closure
- Bound exterior edges

	50	100	250	500	1000	Size	print area
BC1150	8.82	7.21	6.32	5.54	5.38	11 x 5"	7 x 2"h
BC1310	10.71	8.79	7.78	6.81	6.62	13.25 x 10"	10 x 4"h
BC1411	11.55	9.48	8.42	7.38	7.17	14 x 11.25"	10 x 4.5"h

HESSIAN
LAMINATED JUTE
DOCUMENT ENVELOPES
BC1150, BC1310, BC1411



made in the USA 


- "False" Gusset Construction
- Laminated Burlap Material
- Natural Jute color
- 1" poly webbing handles (choose from 15 colors of webbing)
- Minimum text height ¼"

50	100	250	500	1000
12.27	10.09	8.98	7.87	7.64

Overall dimensions 18 x 3 x 13.5"h
Imprint area 9 x 9"h

ALPINE
LAMINATED BURLAP TOTE BAG
TB1339



made in the USA 

- Flat Construction
- Laminated Burlap Material
- Natural Jute color
- 1" poly webbing handles (choose from 15 colors of webbing)
- Minimum text height ¼"

50	100	250	500	1000
8.67	7.09	6.21	5.44	5.29

Overall dimensions 13 x 14"h
Imprint area 8 x 8"h

BRIGHTON
LAMINATED BURLAP TOTE BAG
TB1340



made in the USA 

- False gusset Construction
- Laminated burlap material
- Natural Jute color
- 1" poly webbing handles (choose from 15 colors of webbing)
- Minimum text height ¼"

50	100	250	500	1000
8.93	7.30	6.41	5.61	5.45

Overall dimensions 10 x 2.5 x 11.5"h
Imprint area 6 x 6"h

DOODAD
LAMINATED BURLAP TOTE BAG
TB1011



LAMINATED BURLAP TOTE BAGS

TIKI

JUTE/BURLAP POUCH WITH TIE
SR580, SR610, SR812, SR613



 m a d e i n t h e U S A

	50	100	250	500	1000	Dimensions	Imprint area
SR580	N/A	4.45	3.78	3.31	3.21	5 x 8"	3 x 3"
SR610	N/A	4.64	3.94	3.46	3.36	6 x 10"	4 x 4.5"
SR613	N/A	5.21	4.48	3.92	3.81	8 x 12"	6 x 6.5"
SR812	N/A	5.82	5.03	4.41	4.29	6 x 13"	4 x 6"

- Environmentally friendly 10 oz common burlap
- Soft natural cotton strap for tying
- Over-locked outside seams
- Custom sizes available
- Distinctive burlap aroma
- Minimum text height ¼"

BERMUDA

LAMINATED BURLAP TOTE BAG
ITB310



i m p o r t e d

- Full Gusset Construction
- Laminated Burlap Material
- Natural Jute Color
- Soft Padded cotton webbing handles

50	100	250	500	1000
9.40	7.78	7.13	6.25	6.07

Overall dimensions 16 x 6 x 14"h

Imprint area 9 x 8"h

CAYMAN

LAMINATED BURLAP TOTE BAG
ITB340



i m p o r t e d

- Bottom Gusset Construction
- Laminated Burlap Material
- Natural Jute Color
- Natural leather handles
- Magnetic snap closure

50	100	250	500	1000
19.23	16.36	15.38	13.48	13.10

Overall dimensions 18 x 5 x 14"h

Imprint area 9 x 8"h

BELIZE

TWO-TONE BURLAP TOTE BAG
ITB380



i m p o r t e d

- "T" Gusset Construction
- Laminated Burlap Material
- Two Tone Jute fabric
- Brown leather handles

50	100	250	500	1000
14.40	12.15	11.33	9.93	9.64

Overall dimensions 16 x 5 x 14"h

Imprint area 8 x 6"h

made in the USA



- Recycled burlap coffee bag
- Full gusset construction
- Natural canvas lining
- Reversible design
- 3" Wide jute webbing shoulder strap 32" long

50	100	250	500	1000
27.87	23.09	20.98	18.38	17.86

Overall dimensions 11 x 3 x 13.5" h

Imprint area 8 x 8" h



JAVA
RECYCLED BURLAP HIPPIE BAG
TBC1130



RECYCLED COFFEE BAGS

made in the USA



- Recycled burlap coffee bag
- Flat construction
- Natural canvas lining
- Reversible design
- 3/4" Natural cotton self handles

50	100	250	500	1000
14.49	11.94	10.69	9.36	9.10

Overall dimensions 14.5 x 16" h

Imprint area 10 x 10" h



ESPRESSO
RECYCLED BURLAP COFFEE TOTE
TBC1414



made in the USA



- Recycled burlap coffee bag
- False gusset construction
- 1" double stitched top hem
- 2" wide jute handles 24" long

50	100	250	500	1000
14.02	11.55	10.32	9.04	8.79

Overall dimensions 20 x 4 x 13" h

Imprint area 10 x 8" h



MOCHA
RECYCLED BURLAP COFFEE TOTE
TBC2100



MARQUEE

RECYCLED BANNER TOTE BAG
TB1410



- Repurpose used banner material destined for the landfill
- Use your company banners, or we can source them for you
- Requires 3 sq ft banner
- 1" webbing handles
- Our simplest, most economical design



made in the USA

50	100	250	500	1000
9.11	7.45	6.55	5.74	5.57

Overall dimensions 14 x 13" h

Imprint area 6 x 6" h



BILLBOARD

RECYCLED BANNER TOTE BAG
TB1404



- Utilizes used banner material destined for the landfill
- Use your company banners, or we can source them for you
- Requires 7 sq ft banner
- 1" webbing handles
- Front and back open pockets



made in the USA

50	100	250	500	1000
24.49	20.27	18.38	16.10	15.64

Overall dimensions 14 x 4 x 14" h

Imprint area 6 x 6" h



BEACH COMBER

TOTE BAG
TB1370



- Drop down zipper top
- Shoulder length webbing handles
- Front open pocket
- Available in 25 colors



made in the USA

50	100	250	500	1000
24.49	20.27	18.38	16.10	15.64

Overall dimensions 22 x 5 x 13" h

Imprint area 7 x 7" h

DERBY

ZIPPER TOTE
TB1875



- Contrasting fabric panels
- 1.5" webbing handles
- Zipper top
- Available in 25 colors



made in the USA

50	100	250	500	1000
13.76	11.33	10.13	8.87	8.62

Overall dimensions 18 x 3 x 12.5" h

Imprint area 8 x 8" h

made in the USA 

- Lightweight yet durable 200d polyester fabric for long life
- Available in 15 colors
- "T" gusset construction
- 1" PP webbing carry handles
- Grocery shopping tote size

50	100	250	500	1000
12.24	10.06	8.95	7.84	7.62

Overall dimensions 12 x 8 x 13" h

Imprint area 10 x 10" h

PROVISIONER
SHOPPING TOTE BAG
TB1258



TOTE BAGS

made in the USA 

- False gusset construction
- 1.5" webbing handles
- Available in 25 colors
- Custom sizes are available

50	100	250	500	1000
10.24	8.39	7.41	6.50	6.31

Overall dimensions 18 x 3 x 13" h

Imprint area 10 x 8" h

CHARMER
TOTE BAG
TB1813



made in the USA 

- False gusset construction
- 1.5" webbing handles
- Available in 25 colors

50	100	250	500	1000
11.87	9.76	8.67	7.60	7.38

Overall dimensions 21 x 4 x 14" h

Imprint area 10 x 8" h

MONTEREY
TOTE BAG
TB2114



made in the USA 

- Dual carry handles
- "Bottomless" construction to deter theft
- Available in 25 colors

50	100	250	500	1000
N/A	7.09	6.55	5.74	5.57

Overall dimensions 8.5 x 13.5" h

Imprint area 6 x 8" h

GOOD MORNING
NEWSPAPER CADDY
TB09



TERMS AND CONDITIONS

Orders: We accept orders either mailed, faxed, or e-mailed.

Changes to Orders: Changes will be accepted by e-mail or fax. If the order is in process, the distributor will be billed for any costs actually incurred to change.

Overrun / Under run: Order quantity will be shipped plus or minus 5%. Exact quantity orders require additional charges.

Returns: Custom and imprinted items may not be returned. Stock merchandise returned is subject to 15% restocking fee.

Samples: Random samples are billed at end quantity price. Charges for custom items are quoted prior to work beginning.

Spec Samples: Spec samples will be provided on custom designs on an order-by-order basis.

Pre Proofs: Pre Proofs will be billed at run charge plus screen setups + \$50.00 (r) press setup per color.

Email / Virtual Proofs: First pdf proof is provided at no charge, additional proofs or virtual proofs will be billed at 13.33 (r) each.

Quality: Workmanship and materials are guaranteed up to 60 days from ship date.

Size: Bag size can vary up to 1/2" from stated specifications.

Large quantities: If your requirement is more than price list quantities, please call the factory for a quote.

Less than minimum: A small order charge of \$40.00 (net) will be assessed on order quantities less than stated in the price list.

Fulfillment: Fulfillment is available and priced upon request.

Graphics: Silk Screening. Most items include one color run charge. Additional colors or locations are priced as follows:

Up to 200	\$0.80 (t)
Over 200	\$0.65 (t)

Up to 6 colors available

Screen Set-up: Screen print set up per color \$57.15 (t).

Art Format: Illustrator, Photoshop or .ai, .eps, .pdf pc preferred.

Mid-run Ink Color Change: \$22.00 (t).

Art Charges: Artwork requiring revisions will be assessed \$68.50 (t) / hr.

Repeat Orders: The screen setup fee will be waived on reorders within a 12 month period. We cannot waive set-up charges on repeat orders less than printed minimum catalog quantities

Embroidery: Embroidery and digitizing are quoted per order. Approximately \$0.50(v)/1000 stitches run charge, digitizing \$13.00 (v)/1000 stitches

PMS match: No charge for PMS matching.

Heat Transfers: Heat transfer prices are quoted per order. 4 color process or flocked velvet, call for information .

Color match: Textile product colors may vary slightly from order to order. Exact match is not guaranteed.

Shipping: UPS Ground will be used unless specified. We cannot be liable for delays by the shipping company. All shipments are FOB Logan, Utah 84321. Fed Ex shipments may incur \$15.00 pick-up charge.

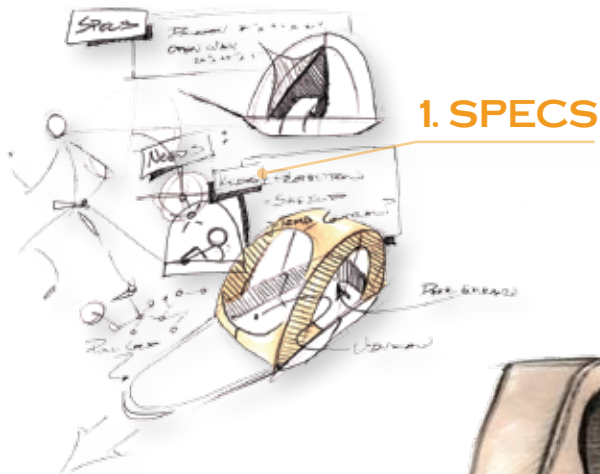
Split shipment / drop ship: Split and drop shipment is available for \$5.00 (r) for each additional address.

BRAVE USA'S CUSTOM PROCESS

Brave USA... "The Leader in Custom Design"... prides itself in producing high quality sewn products that meet or exceed customer expectations. We can create that unique design that will set you apart from the competition. Follow these 5 easy steps to create an item that will meet your specific needs.

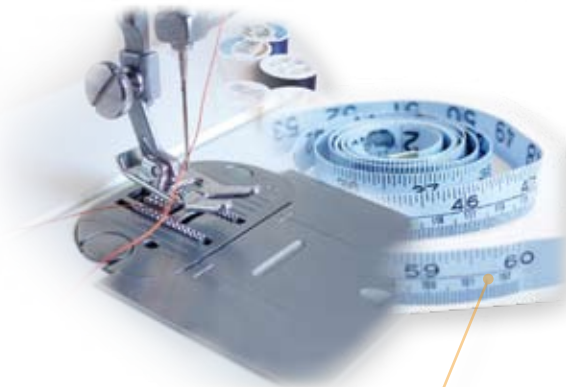
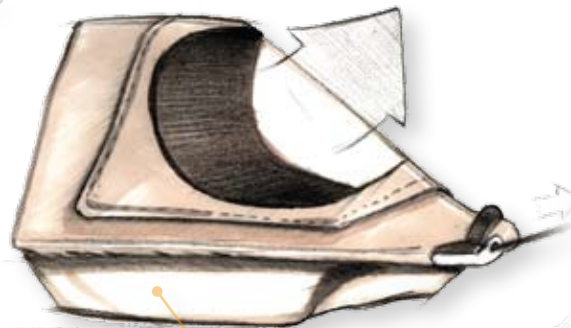
1. Specs... Provide us with specifics such as: dimensions, style, fabric, application, and budget.
2. Quote... With the specifics that you give us, we calculate an estimate of material and labor costs.
3. Design... Then we take your idea and create the patterns needed to produce your item.
4. Prototype... From the pattern, we create a working prototype for you to feel, hands on, the quality and functionality of the item.
5. Final production... Once the prototype is approved, we can begin the production process. Typical production time is about 3 weeks.

made in the USA 



	\$235.00
	\$14.83
	\$249.83

2. QUOTE



ASI 41630
PPAI 241397
UPIC BRAVEUSA
SAGE 51016

BRAVEUSA.COM
A Distributor Friendly Website

