

WOLFMARK
Promotional Apparel

2011

Wolfmark has been a leader in quality, value and customer service for over seventy years.

ASI 98085 | PPAI 114140 | SAGE 57515 | UPIC WOLFMARK

WOLFMARKTIES.COM



Use the QR Code reader app on your mobile device to visit the Wolfmark website page.

APRONS.....1-5**BLANKETS.....6-11**

4 in 1 Picnic.....	9
Bamboo.....	8
Cashmere.....	8
Coral Fleece.....	10
Crib.....	10
Eco Fleece.....	11
Explorer Picnic.....	9
Jersey Fleece.....	10
Lambswool.....	8
Polar Fleece.....	11
Sherpas.....	9
Value Fleece.....	11

BOW TIES & ACCESSORIES.....12-16

Bow Ties.....	14
Cascades.....	15
Crossovers.....	14
Cummerbunds.....	16
Floppy Bows.....	14
Kentucky Colonels.....	15
Knot Scarves.....	54
Pocket Squares.....	16
Rosettes.....	16
Tulip Bows.....	15

CAMP SHIRTS.....17-19**CULINARY.....20-27**

Baker's Caps.....	26
Billy Cap.....	27
Chef Coats.....	22
Chef Hats & Toques.....	22
Chef Scarves.....	27
Cook Pants.....	25
Cook Shirts.....	26
Dexter Cap.....	26
Fountain Caps.....	26
Italian Gatsby Cap.....	27
Mesh Cap.....	27

ECO FLEECE.....28-31

Blankets.....	30
Beanie Caps, Gloves & Scarves.....	31

FLEECE.....32-35

Blankets.....	10-11
Beanie Caps, Gloves/Mittens & Scarves.....	34
Headbands & Neck Gaiters.....	35

HEAD WEAR.....36-39

Baker's Caps.....	26
Berets.....	39
Billy Caps.....	38
Chef Hats & Toques.....	22
Dexter Caps.....	34
Driver's Caps.....	38
Fountain Caps.....	39
Mesh Caps.....	38
Urban Caps.....	38

SCARVES/MUFFLERS/PASHMINAS.....40-54

Acrylic.....	43
Aviator.....	54
Bamboo.....	42
Cashmere.....	42
Custom.....	48
Fleece.....	43
Photo Process.....	48
Lambswool.....	42
Pashminas.....	43
Polyester.....	46
Silk.....	47

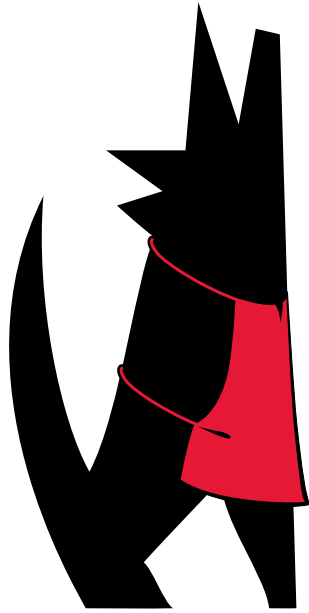
SASHES & STOLES.....55-58

Cords.....	57
Custom.....	58
Graduation.....	57
Pageant.....	57

SCRUBS.....59-61**TIES.....62-74**

Argyle & Beckett.....	70
Career & Corporate Collections.....	68
Carlton, Ellison Bay & Newport.....	69
Custom.....	66
Mansfield Striped.....	72
Novelty.....	73-74
Photo Process.....	67
Polyester (Solid color).....	64
Saville & Signature Striped.....	71
School Striped.....	72
Seven Fold.....	67
Silk & Skinny (Solid color).....	65
Somerset Striped.....	70
Uniform.....	74
Vasari.....	68

UNIFORM.....75-77**VESTS.....78-80**



WOLFMARK
Promotional Apparel

APRONS

2011



Shield against daily messes.

Most items in stock and ready to ship.

Embroidery and screen-printing available.

Wolfmark has been a leader in quality, value
and customer service for over seventy years.

ASI 98085 | PPAI 114140 | SAGE 57515 | UPIC WOLFMARK

WOLFMARKTIES.COM



*Use the QR Code reader app
on your mobile device to visit
the Wolfmark website page.*

Deluxe Long Bib Apron

A versatile 22" x 33" apron made of a 65/35 polyester/cotton twill (7.5 oz.) with an adjustable neck strap, large divided front pocket and extra long waist ties. Sturdy bar tacking at all the stress points ensure durability.

3.5" x 6" imprint area on pocket,
8" x 8" imprint area above pocket.

Size: One size fits most

Care: Machine wash cold, dry low

Order requirements: 12 min.

Packaging: Cellophane bag

Production time: Stock

List: \$7.08 (R)

APRN-990-000 White

APRN-990-001 Black

APRN-990-002 Navy

APRN-990-003 Red

APRN-990-004 Maroon

APRN-990-005 Royal Blue

APRN-990-006 Hunter Green



*Ideal for screen-printing
or embroidery!*

Standard Long Bib Apron

A 26" x 34" long apron made of a 65/35 polyester/cotton twill (7.5 oz.) with extra long waist ties.
8" x 8" imprint area.

Size: One size fits most

Care: Machine wash cold, dry low

Order requirements: 12 min.

Packaging: Cellophane bag

Production time: Stock

List: \$6.00 (R)

APRN-985-000 White

APRN-985-001 Black

APRN-985-002 Navy

APRN-985-003 Red

APRN-985-004 Maroon

APRN-985-005 Royal Blue

APRN-985-006 Hunter Green



Standard Short Bib Apron

A 23" x 27" standard apron made of a 65/35 polyester/cotton twill (7.5 oz.) with rounded bottom corners and extra long waist ties.
8" x 8" imprint area.

Size: One size fits most

Care: Machine wash cold, dry low

Order requirements: 12 min.

Packaging: Cellophane bag

Production time: Stock

List: \$5.33 (R)



APRN-980-000 White

APRN-980-001 Black

APRN-980-002 Navy

APRN-980-003 Red

APRN-980-004 Maroon

APRN-980-005 Royal Blue

APRN-980-006 Hunter Green



Quantity discounts available!

Full Bistro Apron

A 27" x 31" service apron made of a 65/35 polyester/cotton twill (7.5 oz.) with large divided front pocket and extra long waist ties. 3.5" x 6" imprint area on pocket, 3" x 12" imprint area above pocket.

Size: One size fits most

Care: Machine wash cold, dry low

Order requirements: 12 min.

Packaging: Cellophane bag

Production time: Stock

List: \$6.65 (R)

APRN-975-000 White

APRN-975-001 Black

*Ideal for screen-printing
or embroidery!*



Half Bistro Apron

A 27" x 19" knee-length apron made of a 65/35 polyester/cotton twill (7.5 oz.) with large divided front pocket and extra long waist ties. 3.5" x 6" imprint area on pocket, 2" x 8" imprint area above pocket.

Size: One size fits most

Care: Machine wash cold, dry low

Order requirements: 12 min.

Packaging: Cellophane bag

Production time: Stock

List: \$5.33 (R)

APRN-970-000 White

APRN-970-001 Black



Waist Apron

A 22" x 12" short apron made of a 65/35 polyester/cotton twill (7.5 oz.) with front pocket divided in thirds, rounded bottom corners and extra long waist ties. 3.5" x 5" imprint area on pocket, 2" x 8" imprint area above.

Size: One size fits most

Care: Machine wash cold, dry low

Order requirements: 12 min.

Packaging: Cellophane bag

Production time: Stock

List: \$3.83 (R)



000
001
002
003
004
005
006

APRN-965-000 White

APRN-965-001 Black

APRN-965-002 Navy

APRN-965-003 Red

APRN-965-004 Maroon

APRN-965-005 Royal Blue

APRN-965-006 Hunter Green

Quantity discounts available!

WOLFMARKTIES.COM

ASI 98085 | PPAI 114140 | SAGE 57515 | UPIC WOLFMARK

WOLFMARK

Promotional Apparel

Cobbler Apron

Made of a 65/35 polyester/cotton twill (7.5 oz.) with large divided front pocket and self material side ties. 6" x 6" imprint area on pocket, 8" x 8" imprint area above pocket.

Size: One size fits most

Care: Machine wash cold, dry low

Order requirements: 12 min.

Packaging: Cellophane bag

Production time: Stock

List: \$7.08 (R)

APRN-900-001 Black

APRN-900-002 Navy

APRN-900-003 Red

APRN-900-005 Royal Blue

APRN-900-006 Hunter Green



4-way Apron

Made of a 65/35 polyester/cotton twill (6 oz.) with extra long waist ties. 8" x 8" imprint area.

Size: One size fits most

Care: Machine wash cold, dry low

Order requirements: 12 min.

Packaging: Cellophane bag

Production time: Stock

List: \$5.33 (R)

APRN-800-001 White



Italian Bib Apron

A 23" x 24" tri-color apron made of a 65/35 polyester/cotton twill (7.5 oz.) with large divided front pocket and extra long waist ties. Sturdy bar tacking at all the stress points ensure durability. 8" x 8" imprint area above pocket.

Size: One size fits most

Care: Machine wash cold, dry low

Order requirements: 12 min.

Packaging: Cellophane bag

Production time: Stock

List: \$10.42 (R)

APRN-800-106



Embroidery

Stitch by stitch, adding embroidery is the perfect way to promote your identity or event.

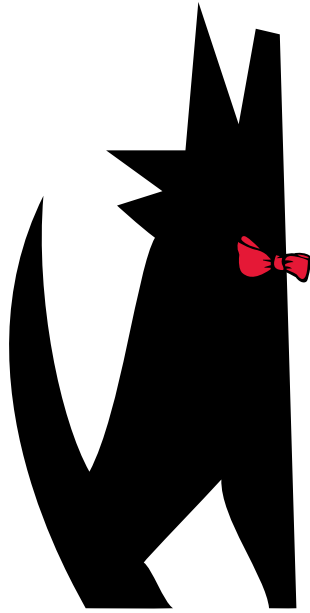
Quantity	12-23	24-71	72-143	144-432	433-1199	1200-5000	Digitizing charge:
5,000 stitches	\$10.97	\$5.25	\$4.50	\$4.17	\$3.43	\$2.97 (R)	\$16.67 (R) per 1,000 stitches
Each additional 1000 stitches	\$0.92	\$0.42	\$0.33	\$0.30	\$0.27	\$0.20 (R)	

Screen-printing

Enhance your logo or design with screen-printing!

Quantity	12-23	24-95	96-143	144-299	300-499	500+
One color	\$9.58	\$6.00	\$4.85	\$4.08	\$3.25	\$2.63 (R)

Screen set-up charge:
\$75.00 (R) - includes shipping to screen-printer, artwork, necessary flash charges and under base.



WOLFMARK
Promotional Apparel

BLANKETS

2011



Warm and soft, luxurious and affordable.

Most items in stock and ready to ship.

Embroidery and screen-printing available.

Wolfmark has been a leader in quality, value
and customer service for over seventy years.

ASI 98085 | PPAI 114140 | SAGE 57515 | UPIC WOLFMARK

WOLFMARKTIES.COM



*Use the QR Code reader app
on your mobile device to visit
the Wolfmark website page.*

Cashmere

A cashmere/wool blend throw blanket finished with 3" rope fringe.

Size: 50" x 60"

Care: Dry clean

Order requirements: 1 min.

Packaging: Cellophane bag

Production time: Stock

List: \$141.00 (R)

- CMTB-001 Black
- CMTB-012 Camel
- CMTB-019 Brown
- CMTB-025 Ivory



Custom fabric content and additional sizes available
(12 week production time, minimum order quantity of 75).

Merino Lambswool

100% Merino lambswool blanket finished with 3" rope fringe.

Size: 54" x 72"

Care: Dry clean

Order requirements: 1 min.

Packaging: Cellophane bag

Production time: Stock

List: \$65.82 (R)

- LWTB-001 Black
- LWTB-002 Navy
- LWTB-012 Camel
- LWTB-019 Brown
- LWTB-022 Garnet Red
- LWTB-025 Ivory



Quantity discounts available!

Carrying Strap

Adjustable double buckle nylon carrying strap for easy transport.
Available with blanket order.

List: \$2.08 (R)



Bamboo

100% natural bamboo blanket.
Plaids finished on two ends with rope fringe. Solid colors have matching whip stitch.

Size: 50" x 60"

Care: Dry clean

Order requirements: 12 min.

Packaging: Cellophane bag

Production time: Stock

List:

Plaid - \$41.65 (R)

Solid - \$33.32 (R)



- BBTB-P-HAST Blue Plaid
- BBTB-P-LIV Gray Plaid
- BBTB-P-ROCK Red Plaid
- BBTB-P-BAN Tan Plaid



- BBTB-S-001 Black
- BBTB-S-002 Navy
- BBTB-S-003 Red
- BBTB-S-012 Camel
- BBTB-S-014 Pink
- BBTB-S-025 Ivory

Sherpa

Faux micro mink and lambswool sherpa throw blanket.

Size: 50" x 60"

Care: Machine wash cold, dry low

Order requirements: 12 min.

Packaging: Vinyl zipper bag

Production time: Stock

List: \$25.65 (R)

- SHPTB-001 Black
- SHPTB-002 Navy
- SHPTB-009 Gray
- SHPTB-012 Camel
- SHPTB-019 Brown



4-in-1 Picnic

100% anti-pill polar fleece interior with polyester oxford exterior and closing zipper. Can be used as a seat cushion, picnic blanket, a tote bag or weather protector.

Size: 50" x 60"

Care: Machine wash cold, dry low

Order requirements: 12 min.

Packaging: Bulk

Production time: Stock

List: \$17.92 (R)

- 41PB-001 Black
- 41PB-002 Navy
- 41PB-003 Red
- 41PB-005 Royal Blue



*Ideal for screen-printing
or embroidery!*

Blanket Bag

Vinyl zipper bag with pocket and handle.
Available with blanket order.

Size: 12" x 15" x 3"

List: \$2.08 (R)



**Quantity
discounts
available!**

Explorer Picnic

100% polyester, soft anti-pill fleece interior with water repellent nylon oxford exterior. Easy-carry design that unfolds into full blanket with velcro pockets and tubular binding.

Size: 50" x 60"

Care: Machine wash cold, dry low

Order requirements: 12 min.

Packaging: Bulk

Production time: Stock

List: \$17.08 (R)



- EXPB-030 Blue/Green Plaid
- EXPB-031 Red/Black Plaid



- EXPB-001 Black
- EXPB-002 Navy
- EXPB-003 Red
- EXPB-005 Royal Blue
- EXPB-006 Hunter Green
- EXPB-016 Charcoal

WOLFMARKTIES.COM

ASI 98085 | PPAI 114140 | SAGE 57515 | UPIC WOLFMARK

WOLFMARK 

Promotional Apparel

Coral Fleece

100% polyester coral fleece throw blanket finished with matching binding.

Size: 50" x 60"

Care: Machine wash cold, dry low

Order requirements: 12 min.

Packaging: Vinyl zipper bag

Production time: Stock

List: \$15.25 (R)

- CFTB-001 Black
- CFTB-002 Navy
- CFTB-003 Red
- CFTB-004 Maroon
- CFTB-005 Royal Blue
- CFTB-006 Hunter Green
- CFTB-008 Purple
- CFTB-014 Pink
- CFTB-016 Charcoal
- CFTB-019 Brown
- CFTB-025 Ivory



Use the QR Code reader app on your mobile device to visit the Wolfmark website page.

Jersey Fleece

80% cotton/20% polyester jersey sweatshirt fleece throw blanket.

Size: 50" x 60"

Care: Machine wash cold, dry low

Order requirements: 12 min.

Packaging: Bulk

Production time: Stock

List: \$22.08 (R)

- JFTB-506-001 Black
- JFTB-506-002 Navy
- JFTB-506-003 Red
- JFTB-506-005 Royal Blue
- JFTB-506-006 Hunter Green
- JFTB-506-015 Heather Gray



Size: 54" x 84"

Care: Machine wash cold, dry low

Order requirements: 12 min.

Packaging: Bulk

Production time: Stock

List: \$30.83 (R)

- JFTB-584-015 Heather Gray



Quantity discounts available!

Jersey Fleece Crib

80% cotton/20% polyester jersey fleece throw blanket.

Size: 30" x 40"

Care: Wash cold, dry low

Order requirements: 12 min.

Packaging: Bulk

Production time: Stock

List: \$10.00 (R)



- JFCB-000 White
- JFCB-013 Light Blue
- JFCB-014 Pink
- JFCB-021 Soft Yellow

Polar Fleece Crib

100% anti-pill polyester fleece crib blanket with brushed finish and matching whip stitch.

List: \$7.50 (R)



- PFCB-000 White
- PFCB-002 Navy Blue
- PFCB-013 Light Blue
- PFCB-014 Pink
- PFCB-021 Soft Yellow

Polar Fleece

100% anti-pill polyester fleece throw blanket with brushed finish and matching whip stitch.

Size: 50" x 60"

Care: Machine wash cold, dry low

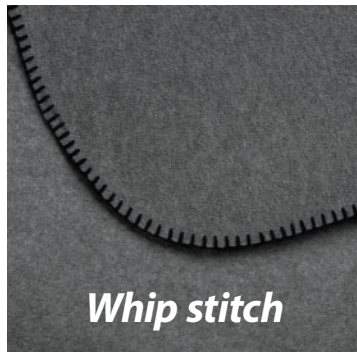
Order requirements: 12 min.

Packaging: Bulk

Production time: Stock

List: \$11.08 (R)

- PFTB-001 Black
- PFTB-002 Navy
- PFTB-003 Red
- PFTB-004 Maroon
- PFTB-005 Royal Blue
- PFTB-006 Hunter Green
- PFTB-008 Purple
- PFTB-011 Gold
- PFTB-014 Pink
- PFTB-015 Heather Gray
- PFTB-016 Charcoal
- PFTB-019 Brown
- PFTB-025 Ivory
- PFTB-046 Orange



Whip stitch

Value Fleece

100% anti-pill polyester fleece throw blanket with matching whip stitch.

Size: 50" x 60"

Care: Machine wash cold, dry low

Order requirements: 12 min.

Packaging: Bulk

Production time: Stock

List: \$8.33 (R)

- VFTB-001 Black
- VFTB-002 Navy
- VFTB-003 Red
- VFTB-005 Royal Blue
- VFTB-006 Hunter Green
- VFTB-015 Heather Gray



Eco Fleece

Environmentally friendly polyester fiber fleece throw blanket with matching merrowed edge made from 100% recycled plastic bottles.

Size: 50" x 60"

Care: Wash cold, dry low

Order requirements: 12 min.

Packaging: Bulk

Production time: Stock

List: \$13.50 (R)



- EFTB-001 Black
- EFTB-004 Maroon
- EFTB-005 Royal Blue
- EFTB-006 Hunter Green

Quantity discounts available!

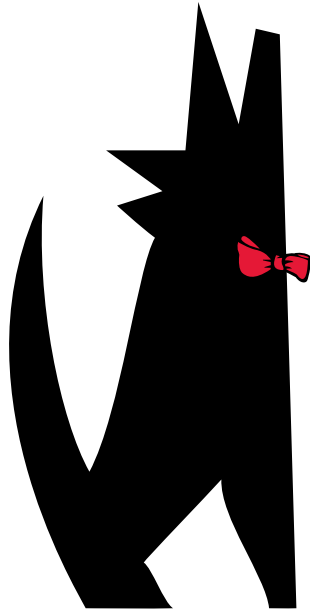


WOLFMARKTIES.COM

ASI 98085 | PPAI 114140 | SAGE 57515 | UPIC WOLFMARK

WOLFMARK

Promotional Apparel



WOLFMARK
Promotional Apparel

BOW & TIES ACCESSORIES

2011



Solid colors that are simply dynamic.

Most items in stock and ready to ship.



Wolfmark has been a leader in quality, value and customer service for over seventy years.

ASI 98085 | PPAI 114140 | SAGE 57515 | UPIC WOLFMARK

WOLFMARKTIES.COM



Use the QR Code reader app on your mobile device to visit the Wolfmark website page.

Bow Ties

100% polyester satin 2" bow tie available as clip-on or with an adjustable band.

Size: One size fits most

Care: Dry clean

Order requirements: 12 min.

Packaging: Cellophane bag

Production time: Stock

Adjustable Band List: \$3.50 (R)

SCP-190-000	White
SCP-190-001	Black
SCP-190-002	Navy
SCP-190-003	Red
SCP-190-004	Maroon
SCP-190-005	Royal Blue
SCP-190-006	Hunter Green
SCP-190-007	Kelly Green
SCP-190-008	Purple
SCP-190-009	Light Gray
SCP-190-010	Dark Gray
SCP-190-011	Gold
SCP-190-014	Pink
SCP-190-019	Chocolate Brown
SCP-190-020	Champagne Beige
SCP-190-023	French Blue
SCP-190-026	Lime Green
SCP-190-027	Vegas Gold
SCP-190-046	Orange
SCP-190-048	Fuchsia



Clip-on List: \$3.33 (R)

SCP-160-000	White
SCP-160-001	Black
SCP-160-002	Navy
SCP-160-003	Red
SCP-160-004	Maroon
SCP-160-005	Royal Blue
SCP-160-006	Hunter Green
SCP-160-007	Kelly Green
SCP-160-008	Purple
SCP-160-009	Light Gray
SCP-160-010	Dark Gray
SCP-160-011	Gold
SCP-160-014	Pink
SCP-160-019	Chocolate Brown
SCP-160-020	Champagne Beige
SCP-160-023	French Blue
SCP-160-026	Lime Green
SCP-160-027	Vegas Gold
SCP-160-046	Orange
SCP-160-048	Fuchsia

Quantity discounts available!

Floppy Bows

100% polyester satin floppy bow tie with adjustable band.

Size: One size fits most

Care: Dry clean

Order requirements: 12 min.

Production time: Stock

List: \$7.92 (R)



SCP-540-000	White
SCP-540-001	Black
SCP-540-002	Navy
SCP-540-003	Red
SCP-540-004	Maroon
SCP-540-005	Royal Blue
SCP-540-006	Hunter Green
SCP-540-007	Kelly Green
SCP-540-008	Purple
SCP-540-009	Light Gray
SCP-540-010	Dark Gray
SCP-540-011	Gold
SCP-540-046	Orange

Crossovers

100% polyester satin crossover bow tie with adjustable band and covered snap.

Size: One size fits most

Care: Dry clean

Order requirements: 12 min.

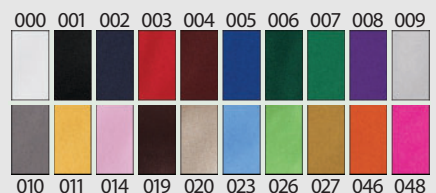
Packaging: Cellophane bag

Production time: Stock

List: \$4.17 (R)



SCP-175-000	White
SCP-175-001	Black
SCP-175-002	Navy
SCP-175-003	Red
SCP-175-004	Maroon
SCP-175-005	Royal Blue
SCP-175-006	Hunter Green
SCP-175-007	Kelly Green
SCP-175-008	Purple
SCP-175-009	Light Gray
SCP-175-010	Dark Gray
SCP-175-011	Gold
SCP-175-014	Pink
SCP-175-023	French Blue
SCP-175-027	Vegas Gold
SCP-175-046	Orange



Quantity discounts available!

Kentucky Colonels

100% polyester satin kentucky colonel bow tie available as clip-on or with an adjustable band.

Size: One size fits most

Care: Dry clean

Order requirements: 12 min.

Packaging: Cellophane bag

Production time: Stock

Adjustable Band List: \$4.33 (R)

SCP-165-000	White
SCP-165-001	Black
SCP-165-002	Navy
SCP-165-003	Red
SCP-165-004	Maroon
SCP-165-005	Royal Blue
SCP-165-006	Hunter Green
SCP-165-007	Kelly Green
SCP-165-008	Purple
SCP-165-011	Gold



Clip-on List: \$4.17 (R)

SCP-166-000	White
SCP-166-001	Black
SCP-166-002	Navy
SCP-166-003	Red
SCP-166-004	Maroon
SCP-166-005	Royal Blue
SCP-166-006	Hunter Green
SCP-166-007	Kelly Green
SCP-166-008	Purple
SCP-166-011	Gold

Cascades

100% polyester satin cascade bow tie with adjustable band.

Size: One size fits most

Care: Dry clean

Order requirements: 12 min.

Packaging: Cellophane bag

Production time: Stock

List: \$7.92 (R)

SCP-550-000	White
SCP-550-001	Black
SCP-550-002	Navy
SCP-550-003	Red
SCP-550-004	Maroon
SCP-550-005	Royal Blue
SCP-550-006	Hunter Green
SCP-550-007	Kelly Green
SCP-550-008	Purple
SCP-550-009	Light Gray
SCP-550-010	Dark Gray
SCP-550-011	Gold
SCP-550-046	Orange



Match solid color accessories with ties and scarves for the perfect ensemble

Tulip Bows

100% polyester satin tulip bow tie with adjustable band.

Size: One size fits most

Care: Dry clean

Order requirements: 12 min.

Packaging: Cellophane bag

Production time: Stock

List: \$7.92 (R)



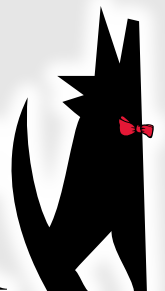
SCP-560-000	White
SCP-560-001	Black
SCP-560-002	Navy
SCP-560-003	Red
SCP-560-004	Maroon
SCP-560-005	Royal Blue
SCP-560-006	Hunter Green
SCP-560-007	Kelly Green
SCP-560-008	Purple
SCP-560-009	Light Gray
SCP-560-010	Dark Gray
SCP-560-011	Gold
SCP-560-046	Orange

Quantity discounts available!

ASI 98085 | PPAI 114140 | SAGE 57515 | UPIC WOLFMARK

WOLFMARK

Promotional Apparel



Rosettes

100% polyester satin rosette bow tie with adjustable band.

Size: One size fits most

Care: Dry clean

Order requirements: 12 min.

Packaging: Cellophane bag

Production time: Stock

List: \$7.92 (R)

- SCP-530-001 Black
- SCP-530-002 Navy
- SCP-530-003 Red
- SCP-530-004 Maroon
- SCP-530-005 Royal blue
- SCP-530-007 Kelly green



Quantity discounts available!

Pocket Squares

100% polyester or silk pocket square with rolled edges.

Size: 10" x 10"

Care: Dry clean

Order requirements: 12 min.

Packaging: Cellophane bag

Production time: Stock

List: Silk - \$6.67 (R)

- SCS-110-000 White
- SCS-110-001 Black
- SCS-110-002 Navy
- SCS-110-003 Red
- SCS-110-004 Maroon
- SCS-110-005 Royal Blue
- SCS-110-006 Hunter Green
- SCS-110-007 Kelly Green
- SCS-110-008 Purple
- SCS-110-009 Light Gray
- SCS-110-010 Dark Gray
- SCS-110-011 Gold
- SCS-110-014 Pink
- SCS-110-019 Chocolate Brown
- SCS-110-020 Champagne Beige
- SCS-110-023 French Blue
- SCS-110-026 Lime Green
- SCS-110-027 Vegas Gold
- SCS-110-046 Orange
- SCS-110-048 Fuchsia



List: Polyester - \$5.00 (R)

- SCP-110-000 White
- SCP-110-001 Black
- SCP-110-002 Navy
- SCP-110-003 Red
- SCP-110-004 Maroon
- SCP-110-005 Royal Blue
- SCP-110-006 Hunter Green
- SCP-110-007 Kelly Green
- SCP-110-008 Purple
- SCP-110-009 Light Gray
- SCP-110-010 Dark Gray
- SCP-110-011 Gold
- SCP-110-014 Pink
- SCP-110-019 Chocolate Brown
- SCP-110-020 Champagne Beige
- SCP-110-023 French Blue
- SCP-110-026 Lime Green
- SCP-110-027 Vegas Gold
- SCP-110-046 Orange
- SCP-110-048 Fuchsia

Cummerbunds

100% polyester cummerbunds with front waist pleat, elastic back and adjustable hook closure.

Size: Fits 24" to 48" waist

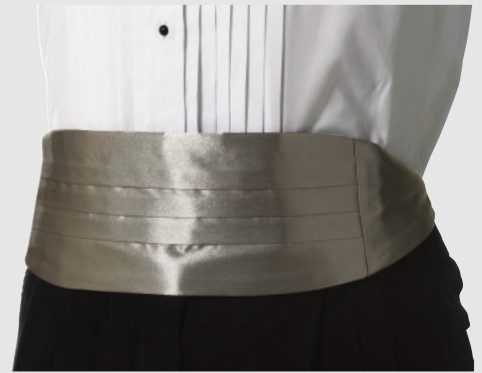
Care: Dry clean

Order requirements: 12 min.

Packaging: Cellophane bag

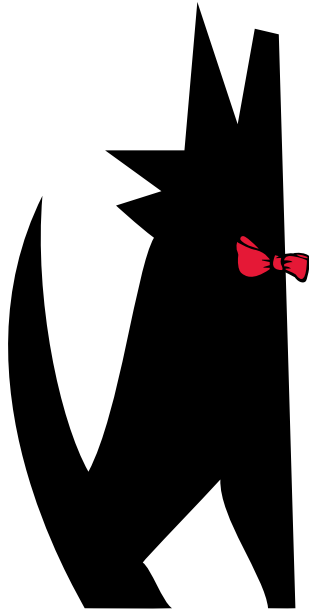
Production time: Stock

List: \$9.27 (R)



- SCP-200-000 White
- SCP-200-001 Black
- SCP-200-002 Navy
- SCP-200-003 Red
- SCP-200-004 Maroon
- SCP-200-005 Royal Blue
- SCP-200-006 Hunter Green
- SCP-200-007 Kelly Green
- SCP-200-008 Purple
- SCP-200-009 Light Gray
- SCP-200-010 Dark Gray
- SCP-200-011 Gold
- SCP-200-014 Pink
- SCP-200-019 Chocolate Brown
- SCP-200-020 Champagne Beige
- SCP-200-023 French Blue
- SCP-200-026 Lime Green
- SCP-200-027 Vegas Gold
- SCP-200-046 Orange
- SCP-200-048 Fuchsia





WOLFMARK
Promotional Apparel

CAMP SHIRTS

2011



Custom cotton collared wear.

Wolfmark has been a leader in quality, value
and customer service for over seventy years.

ASI 98085 | PPAI 114140 | SAGE 57515 | UPIC WOLFMARK

WOLFMARKTIES.COM



*Use the QR Code reader app
on your mobile device to visit
the Wolfmark website page.*

Custom Wet Dyed Camp Shirts

100% cotton button down shirts with chest pocket and side vents.

Custom designed wet dyed camp shirts start with white fabric and use permanent dyes to create both the background colors and logos. The wet dye process is best for colorful designs, PMS color matches and when producing matching neckwear.

Fabric Content: Cotton

Sizes: S to 3XL

Care: Dry clean

Order requirements: 200 min.

Production time: Approx. 7-8 weeks

Quoted per specifications.

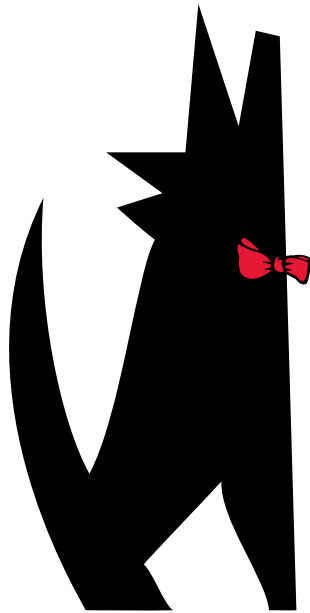
Complimentary artwork up to 4 colors, pre-production sample and set-up included with order. Additional colors charges apply.



WOLFMARKTIES.COM

ASI 98085 | PPAI 114140 | SAGE 57515 | UPIC WOLFMARK

WOLFMARK
Promotional Apparel



WOLFMARK
Promotional Apparel

CULINARY

2011



For kitchens throughout the world.

Embroidery and screen-printing available.

Wolfmark has been a leader in quality, value
and customer service for over seventy years.

ASI 98085 | PPAI 114140 | SAGE 57515 | UPIC WOLFMARK

WOLFMARKTIES.COM



*Use the QR Code reader app
on your mobile device to visit
the Wolfmark website page.*

Premium Chef Coats

Regular length 65/35 polyester/cotton (7 oz.) full sleeve chef coat with contrasting piping and 12 white cloth knot buttons.

Care: Machine wash warm, dry low, hang

Order requirements: 1 min.

Packaging: Cellophane bag

Production time: Stock

CUL-C856 Black w/ white piping

S-L List: \$70.00 (R)

XL List: \$76.67 (R)

2XL List: \$83.33 (R)

3XL List: \$90.00 (R)

CUL-C855 White w/ black piping

S-XL List: \$65.93 (R)

2XL/3XL List: \$70.00 (R)



Regular length 65/35 polyester/cotton (7 oz.) full sleeve chef coat with black piping and 10 white covered buttons.

Care: Machine wash warm, dry low, hang

Order requirements: 1 min.

Packaging: Cellophane bag

Production time: Stock

CUL-C851A White w/ black piping

S-XL List: \$65.93 (R)

2XL/3XL List: \$70.00 (R)



Fashion Chef Coats

Regular length 65/35 polyester/cotton (7 oz.) full sleeve chef coat with 10 knot buttons.

Care: Machine wash warm, dry low, hang

Order requirements: 1 min.

Packaging: Cellophane bag

Production time: Stock

CUL-C886 Chocolate Brown

S-XL List: \$36.67 (R)

2XL List: \$39.17 (R)

3XL List: \$41.67 (R)

CUL-C880 Black

S-XL List: \$36.67 (R)

2XL List: \$39.17 (R)

3XL List: \$41.67 (R)

4XL List: \$45.00 (R)



Chef Hats

100% cotton low crown chef's cap with velcro closure. 3" band height. 1.5" x 4" imprint area.

Size: One size fits most

Care: Wash cold, dry low

Order requirements: 12 min.

Packaging: Cellophane bag

Production time: Stock

List: \$6.25 (R)



CHLC-950-000 White

CHLC-950-001 Black

CHLC-950-003 Red

Chef Toques

100% cotton low crown chef's toque with velcro closure. 3.25" band height. 1" x 4" imprint area.

Size: One size fits most

Care: Wash cold, dry low

Order requirements: 12 min.

Packaging: Cellophane bag

Production time: Stock

List: \$7.50 (R)



CTOQ-920-000 White

CTOQ-920-001 Black

Quantity discounts available!

Fashion Chef Coats (cont.)

Regular length 65/35 polyester/cotton (7 oz.) full sleeve chef coat with 10 plastic buttons.

Care: Machine wash warm, dry low, hang

Order requirements: 1 min.

Packaging: Cellophane bag

Production time: Stock

CUL-C825 White with Black Trim

S-XL List: **\$34.10 (R)**

2XL-4XL List: **\$37.75 (R)**

5XL List: **\$41.52 (R)**

6XL List: **\$45.67 (R)**



Regular length 100% spun polyester (7.2 oz.) full sleeve chef coat with 10 knot buttons.

Care: Machine wash warm, dry low, hang

Order requirements: 1 min.

Packaging: Cellophane bag

Production time: Stock

CUL-C375 Chocolate Brown

S-XL List: **\$33.00 (R)**

2XL-4XL List: **\$37.00 (R)**

5XL List: **\$38.90 (R)**

6XL List: **\$40.80 (R)**

7XL List: **\$42.87 (R)**



Regular length 65/35 polyester/cotton (7 oz.) full sleeve chef coat with 10 plastic buttons.

Care: Wash warm, dry low, hang

Order requirements: 1 min.

Packaging: Cellophane bag

Production time: Stock

CUL-C135 Red

XS-XL List: **\$32.90 (R)**

2XL-4XL List: **\$37.00 (R)**

5XL List: **\$38.33 (R)**

CUL-C875 Black

S-L List: **\$26.17 (R)**

XL List: **\$28.33 (R)**

2XL List: **\$30.00 (R)**

3XL List: **\$31.67 (R)**

4XL List: **\$33.33 (R)**



Regular length 65/35 polyester/cotton (7 oz.) full sleeve chef coat with 10 brown colorized buttons.

Care: Wash warm, dry low, hang

Order requirements: 1 min.

Packaging: Cellophane bag

Production time: Stock



CUL-C876 Chocolate Brown

S-L List: **\$26.17 (R)**

XL List: **\$28.33 (R)**

2XL List: **\$30.00 (R)**

3XL List: **\$31.67 (R)**

Regular length 65/35 polyester/cotton (7 oz.) half sleeve chef coat with 10 plastic buttons.



CUL-C872 Black

S-L List: **\$26.17 (R)**

XL List: **\$27.83 (R)**

2XL List: **\$29.50 (R)**

3XL List: **\$31.17 (R)**

WOLFMARKTIES.COM

ASI 98085 | PPAI 114140 | SAGE 57515 | UPIC WOLFMARK

WOLFMARK

Promotional Apparel

White Chef Coats

Regular length 100% spun polyester (7.2 oz.) full sleeve chef coat with 10 knot buttons.

Care: Machine wash warm, dry low, hang

Order requirements: 1 min.

Packaging: Cellophane bag

Production time: Stock

CUL-C360

S-XL List: **\$26.67 (R)**

2XL-4XL List: **\$30.50 (R)**

5XL-7XL List: **\$34.00 (R)**

Regular length 100% spun polyester (7.2 oz.) full sleeve chef coat with 10 pearl buttons.

CUL-C350

XS-L List: **\$20.83 (R)**

XL-4XL List: **\$24.00 (R)**

5XL-7XL List: **\$27.00 (R)**

Regular length 65/35 polyester/cotton (7 oz.) chef coat with 10 knot buttons.

Care: Machine wash warm, dry low, hang

Order requirements: 1 min.

Packaging: Cellophane bag

Production time: Stock

CUL-C830 Full Sleeve

XS-XL List: **\$25.00 (R)**

2XL-4XL List: **\$28.27 (R)**

5XL-6XL List: **\$31.35 (R)**

CUL-C837 3/4 Sleeve

XS-XL List: **\$25.00 (R)**

2XL List: **\$28.27 (R)**

Ladies regular length 65/35 polyester/cotton full sleeve chef coat with 10 pearl buttons.

Care: Machine wash warm, dry low, hang

Order requirements: 1 min.

Packaging: Cellophane bag

Production time: Stock

CUL-C805

XS-XL List: **\$20.80 (R)**

2XL-4XL List: **\$23.75 (R)**

Screen-printing or embroidery available.



Quantity discounts available!



65/35 polyester/cotton (7 oz.) full sleeve chef coat with 10 pearl buttons.

Care: Wash warm, dry low, hang

Order requirements: 1 min.

Packaging: Cellophane bag

Production time: Stock



CUL-C813 Long Length

M-XL List: **\$20.00 (R)**

2XL List: **\$22.67 (R)**

3XL/4XL List: **\$23.33 (R)**

CUL-C810 Regular Length

XS-XL List: **\$19.08 (R)**

2XL List: **\$20.98 (R)**

3XL/4XL List: **\$22.00 (R)**

5XL List: **\$23.33 (R)**



CUL-C834 Regular 3/4 Sleeve

XS-XL List: **\$18.33 (R)**

2XL-4XL List: **\$20.33 (R)**

CUL-C812 Regular 1/2 Sleeve

XS-XL List: **\$18.33 (R)**

2XL-4XL List: **\$20.33 (R)**

Cook Pants

45/55 polyester/cotton (6 oz.) cargo style cook pants.

Care: Machine wash warm, dry low, hang

Order requirements: 1 min.

Packaging: Cellophane bag

Production time: Stock

CUL-P156 Chocolate Brown

XS-L List: **\$37.92 (R)**

XL List: **\$41.67 (R)**

2XL List: **\$45.50 (R)**

CUL-P157 Khaki

XS-L List: **\$37.92 (R)**

XL List: **\$41.67 (R)**

2XL List: **\$45.50 (R)**

CUL-P158 Black

XS-L List: **\$37.92 (R)**

XL List: **\$41.67 (R)**

2XL List: **\$45.50 (R)**



65/35 polyester/cotton (7 oz.) baggy style cook pants.

Care: Machine wash warm, dry low, hang

Order requirements: 1 min.

Packaging: Cellophane bag

Production time: Stock

CUL-P150 Black

XS-XL List: **\$29.00 (R)**

2XL-4XL List: **\$33.00 (R)**

5XL/6XL List: **\$35.00 (R)**

CUL-P152 Chalkstripe

XS-XL List: **\$29.00 (R)**

2XL-4XL List: **\$33.00 (R)**

5XL/6XL List: **\$35.00 (R)**

CUL-P153 Checkered

XS-XL List: **\$29.00 (R)**

2XL-4XL List: **\$33.00 (R)**



65/35 polyester/cotton (7 oz.) straight leg, zip fly cook pants.

Size: One size fits most

Care: Wash warm, dry low, hang

Order requirements: 1 min.

Packaging: Cellophane bag

Production time: Stock



CUL-P101 White

28"-50" (waist) List: **\$22.00 (R)**

52"-58" (waist) List: **\$23.98 (R)**

CUL-P102 Black

28"-50" (waist) List: **\$24.00 (R)**

52"-60" (waist) List: **\$26.00 (R)**



Use the QR Code reader app on your mobile device to visit the Wolfmark website.

Screen-printing or embroidery available.

WOLFMARKTIES.COM

ASI 98085 | PPAI 114140 | SAGE 57515 | UPIC WOLFMARK

WOLFMARK

Promotional Apparel

Cook Shirts

Long length 65/35 polyester/cotton (4.5 oz.) cook shirt with 6 snaps and chest pocket.

Care: Machine wash warm, dry low, hang

Order requirements: 1 min.

Packaging: Cellophane bag

Production time: Stock

CUL-S177 Black

XS-L List: \$20.50 (R)

XL List: \$22.55 (R)

2XL List: \$24.60 (R)

3XL List: \$26.65 (R)

4XL List: \$28.70 (R)



CUL-S102 White

S-XL List: \$12.83 (R)

2XL/3XL List: \$13.50 (R)

4XL/5XL List: \$14.50 (R)

Long length 100% spun polyester (4 oz.) cook shirt with 6 snaps and chest pocket.

Care: Wash warm, dry low, hang

Order requirements: 1 min.

Packaging: Cellophane bag

Production time: Stock

CUL-S377 Black

S-XL List: \$17.00 (R)

2XL/3XL List: \$18.98 (R)

4XL List: \$20.00 (R)



CUL-S302 White

S-XL List: \$14.98 (R)

2XL/3XL List: \$17.00 (R)

4XL/5XL List: \$19.00 (R)

Fountain Caps

100% cotton fountain cap. 1.5" x 4" imprint area.

Size: One size fits most

Care: Machine wash cold, dry low

Order requirements: 12 min.

Packaging: Cellophane bag

Production time: Stock

List: \$6.25 (R)

FNTC-WH White

FNTC-RT White with Red Trim



Baker's Caps

100% cotton baker's cap with expandable elastic back. 4" band height. 2.5" x 4" imprint area.

Size: One size fits most

Care: Wash cold, dry low

Order requirements: 12 min.

Packaging: Cellophane bag

Production time: Stock

List: \$6.25 (R)



BAKC-900-000 White

BAKC-900-001 Black

BAKC-900-051 Chalkstripe

BAKC-900-053 Houndstooth

Dexter Caps

100% cotton dexter cap (6.5 oz.) 5" height with 1.5" cuff.

Size: One size fits most

Care: Wash cold, dry low

Order requirements: 12 min.

Packaging: Cellophane bag

Production time: Stock

List: \$6.25 (R)



DXTC-940-001 Black

Quantity discounts available!

Billy Caps

100% cotton billy cap with snap closure and matching color fabric under visor and sweatband. 2" x 2" imprint area.

Size: One size fits most

Care: Dry clean

Order requirements: 12 min.

Packaging: Cellophane bag

Production time: In stock

List: \$7.50 (R)

BLYC-910-000 White

BLYC-910-001 Black



Quantity discounts available!

Tropic Mesh Caps

100% polyester traditional mesh cap. 2" x 2" imprint area.

Size: One size fits most

Care: Dry clean

Order requirements: 12 min.

Packaging: Cellophane bag

Production time: In stock

List: \$6.25 (R)

TRMC-905-000 White

TRMC-905-001 Black



Italian Gatsby Cap

65/35 polyester/cotton tri-color Italian cap with adjustable band.

Size: One size fits most

Care: Machine wash cold, line dry

Order requirements: 12 min.

Packaging: Cellophane bag

Production time: Stock

ITAL-910-106

List: \$7.08 (R)



Screen-printing or embroidery available.

Chef Scarves

22" x 42" polyester/cotton blend.
4" x 4" imprint area.

Care: Machine wash cold, dry low

Order requirements: 12 min.

Packaging: Cellophane bag

Production time: Stock

CSCV-150-000 White

List: \$3.75 (R)

CSCV-151-001 Black

List: \$5.42 (R)

CSCV-152-054 Checkered

List: \$5.42 (R)



Aprons

65/35 polyester/cotton aprons.

See our Aprons catalog for more.

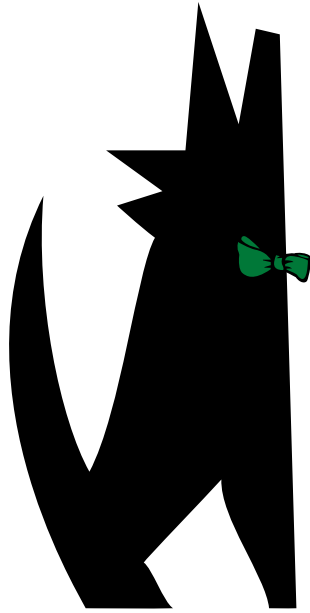


WOLFMARKTIES.COM

ASI 98085 | PPAI 114140 | SAGE 57515 | UPIC WOLFMARK

WOLFMARK 

Promotional Apparel



WOLFMARK
Promotional Apparel

ECO PRODUCTS

2011



Wolfmark goes green!

100% recycled fleece and bamboo products are in stock and ready to ship.

Embroidery available.



Wolfmark has been a leader in quality, value and customer service for over seventy years.

ASI 98085 | PPAI 114140 | SAGE 57515 | UPIC WOLFMARK

WOLFMARKTIES.COM



Use the QR Code reader app on your mobile device to visit the Wolfmark website page.

ECO FLEECE

Our environmentally friendly fleece uses raw materials made out of 100% recycled plastic bottles to create a high quality polyester fiber that delivers a soft and luxurious feel.

Eco fleece is a color-fast product that is extremely earth friendly.

*Embroidery
available*



Eco Fleece Throw Blanket

Size: 50" x 60"

Full trim: Matching merrowed edge

Care: Delicate wash cold, dry low

Order requirements: 12 min.

Packaging: Bulk

Production time: Stock

List: \$13.50 (R)

EFTB-001 Black

EFTB-004 Maroon

EFTB-005 Royal Blue

EFTB-006 Hunter Green

Quantity discounts available!



Eco Fleece Beanie

Size: 9" x 7"

List: \$7.00 (R)

Embroidery available

- EFBH-790-001 Black
- EFBH-790-004 Maroon
- EFBH-790-005 Royal Blue
- EFBH-790-006 Hunter Green



Eco Fleece Zip Gloves

Size: One size fits most

List: \$8.00 (R)

- EFZG-556-001 Black
- EFZG-556-004 Maroon
- EFZG-556-005 Royal Blue
- EFZG-556-006 Hunter Green

Eco Fleece Merrowed Edge Scarf

Size: 9" x 60"

List: \$7.50 (R)

- EFNS-962-001 Black
- EFNS-962-004 Maroon
- EFNS-962-005 Royal Blue
- EFNS-962-006 Hunter Green



Embroidery available

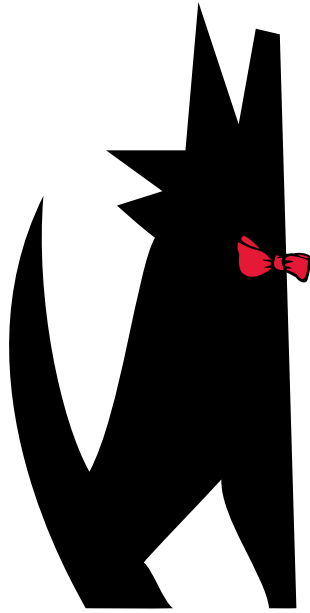
Care: Delicate wash cold, dry low

Order requirements: 12 min.

Packaging: Cellophane bag

Production time: Stock

Quantity discounts available!



WOLFMARK
Promotional Apparel

FLEECE ACCESSORIES

2011



Plush and warm outerwear.

In stock and ready to ship.

Embroidery and screen-printing available.

Wolfmark has been a leader in quality, value
and customer service for over seventy years.

ASI 98085 | PPAI 114140 | SAGE 57515 | UPIC WOLFMARK

WOLFMARKTIES.COM



*Use the QR Code reader app
on your mobile device to visit
the Wolfmark website page.*

Beanies

100% polyester solid color polar fleece beanie. 2" x 4" imprint area.

Size: One size fits most (7" x 9")

Care: Machine wash cold, dry low

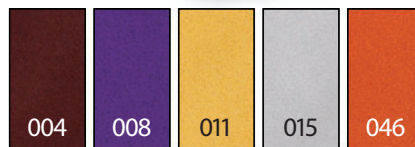
Order requirements: 12 min.

Packaging: Cellophane bag

Production time: In stock

List: \$5.00 (R)

PFBH-790-001	Black
PFBH-790-002	Navy
PFBH-790-003	Red
PFBH-790-004	Maroon
PFBH-790-005	Royal Blue
PFBH-790-006	Hunter Green
PFBH-790-008	Purple
PFBH-790-011	Gold
PFBH-790-015	Heather Gray
PFBH-790-016	Charcoal
PFBH-790-046	Orange



Scarves

100% polyester solid color polar fleece scarf with merrowed edge. 8" x 8" imprint area.

Size: 9" x 60"

Care: Machine wash cold, dry low

Order requirements: 12 min.

Packaging: Cellophane bag

Production time: In stock

List: \$5.42 (R)

PFNS-962-001	Black
PFNS-962-002	Navy
PFNS-962-003	Red
PFNS-962-004	Maroon
PFNS-962-005	Royal Blue
PFNS-962-006	Hunter Green
PFNS-962-015	Heather Gray
PFNS-962-016	Charcoal



Quantity discounts available!

Ideal for screen-printing or embroidery!

Zip Gloves/Mittens

100% polyester polyester solid color polar fleece zipper gloves.

Size: One size fits most

Care: Gentle wash, dry low

Order requirements: 12 min.

Packaging: Cellophane bag

Production time: In stock

List: \$6.33 (R)



Gloves:

PFZG-556-001	Black
PFZG-556-002	Navy
PFZG-556-003	Red
PFZG-556-004	Maroon
PFZG-556-005	Royal Blue
PFZG-556-006	Hunter Green
PFZG-556-008	Purple
PFZG-556-011	Gold
PFZG-556-015	Heather Gray
PFZG-556-016	Charcoal
PFZG-556-046	Orange

Mittens:

PFZM-445-001	Black
PFZM-445-002	Navy
PFZM-445-003	Red
PFZM-445-004	Maroon
PFZM-445-005	Royal Blue
PFZM-445-006	Hunter Green
PFZM-445-008	Purple
PFZM-445-011	Gold
PFZM-445-015	Heather Gray
PFZM-445-016	Charcoal
PFZM-445-046	Orange

Headbands

100% polyester solid color polar fleece headband.

Size: One size fits most (3" x 10")

Care: Machine wash cold, dry low

Order requirements: 12 min.

Packaging: Cellophane bag

Production time: In stock

List: \$3.33 (R)

PFHB-410-001	Black
PFHB-410-002	Navy
PFHB-410-003	Red
PFHB-410-004	Maroon
PFHB-410-005	Royal Blue
PFHB-410-006	Hunter Green
PFHB-410-008	Purple
PFHB-410-011	Gold
PFHB-410-015	Heather Gray
PFHB-410-016	Charcoal
PFHB-410-046	Orange



Quantity discounts available!

Neck Gaiters

100% polyester solid color polar fleece neck gaiter with adjustable draw cord that doubles as a gaiter cap.

Size: One size fits most (10" x 10")

Care: Machine wash cold, dry low

Order requirements: 12 min.

Packaging: Cellophane bag

Production time: In stock

List: \$4.75 (R)

PFNG-119-001	Black
PFNG-119-002	Navy
PFNG-119-003	Red
PFNG-119-004	Maroon
PFNG-119-005	Royal Blue
PFNG-119-006	Hunter Green
PFNG-119-008	Purple
PFNG-119-011	Gold
PFNG-119-015	Heather Gray
PFNG-119-016	Charcoal
PFNG-119-046	Orange



**Ideal for screen-printing
or embroidery!**

Eco Fleece

"Environmentally friendly fleece" uses raw materials made out of 100% recycled plastic bottles to create a high quality polyester fiber that delivers a soft, luxurious feel.

Eco fleece is an extremely earth friendly color-fast product.

Blankets

List: \$13.50 (R)

EFTB-001	Black
EFTB-004	Maroon
EFTB-005	Royal Blue
EFTB-006	Hunter Green

Scarves

List: \$7.50 (R)

EFNS-962-001	Black
EFNS-962-004	Maroon
EFNS-962-005	Royal Blue
EFNS-962-006	Hunter Green

Beanies

List: \$7.00 (R)

EFBH-790-001	Black
EFBH-790-004	Maroon
EFBH-790-005	Royal Blue
EFBH-790-006	Hunter Green

Gloves

List: \$8.00 (R)

EFZG-556-001	Black
EFZG-556-004	Maroon
EFZG-556-005	Royal Blue
EFZG-556-006	Hunter Green

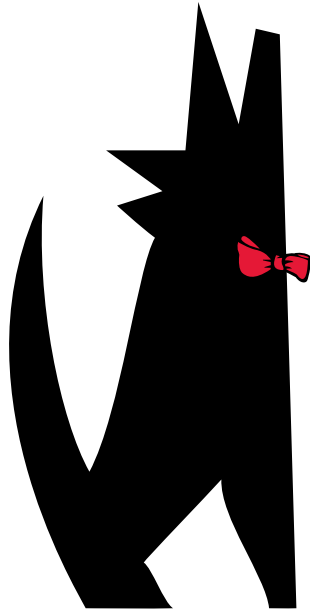
**More earth-friendly products
available in the Wolfmark
Eco Products catalog.**

WOLFMARKTIES.COM

ASI 98085 | PPAI 114140 | SAGE 57515 | UPIC WOLFMARK

WOLFMARK 

Promotional Apparel



WOLFMARK
Promotional Apparel

HEADWEAR

2011



Fashionable, legendary style.

In stock and ready to ship.

Wolfmark has been a leader in quality, value
and customer service for over seventy years.

ASI 98085 | PPAI 114140 | SAGE 57515 | UPIC WOLFMARK

WOLFMARKTIES.COM



*Use the QR Code reader app
on your mobile device to visit
the Wolfmark website page.*

Driver's Caps

100% wool with traditional top stitching and elastic band.
2" x 2" imprint area.

Size: One size fits most

Care: Dry clean

Order requirements: 12 min.
(24 min. with imprint)

Packaging: Cellophane bag

Production time: In stock

List: \$11.67 (R)

DRVC-475-001 Black
DRVC-475-002 Navy
DRVC-475-012 Camel
DRVC-475-016 Charcoal



Screen-printing or embroidery available!

Urban Caps

100% seamless wool urban cap. 2" x 2" imprint area.

Size: One size fits most (10")

Care: Dry clean

Order requirements: 12 min.
(24 min. with imprint)

Packaging: Cellophane bag

Production time: In stock

List: \$10.25 (R)

URBC-480-001 Black
URBC-480-003 Red
URBC-480-012 Camel
URBC-480-014 Pink
URBC-480-016 Charcoal
URBC-480-025 Ivory
URBC-480-048 Fuchsia



Quantity discounts available!

Billy Caps

100% cotton billy cap with snap closure and matching color fabric under visor and sweatband. 2" x 2" imprint area.

Size: One size fits most

Care: Dry clean

Order requirements: 12 min.

Packaging: Cellophane bag

Production time: In stock

List: \$7.50 (R)

BLYC-910-000 White
BLYC-910-001 Black



Tropic Mesh Caps

100% polyester traditional mesh cap. 2" x 2" imprint area.

Size: One size fits most

Care: Dry clean

Order requirements: 12 min.

Packaging: Cellophane bag

Production time: In stock

List: \$6.25 (R)

TRMC-905-000 White
TRMC-905-001 Black



WOLFMARKTIES.COM

ASI 98085 | PPAI 114140 | SAGE 57515 | UPIC WOLFMARK

WOLFMARK
Promotional Apparel

Fashion Berets

100% wool fashion beret. 2" x 2" imprint area.

Size: One size fits most (10")

Care: Dry clean

Order requirements: 12 min.
(24 min. with imprint)

Packaging: Cellophane bag

Production time: In stock

List: \$7.50 (R)



- BERE-501-000 White
- BERE-501-001 Black
- BERE-501-002 Navy
- BERE-501-003 Red
- BERE-501-004 Maroon
- BERE-501-005 Royal Blue
- BERE-501-006 Hunter Green
- BERE-501-008 Purple
- BERE-501-011 Gold
- BERE-501-046 Orange

Military Beret

100% wool black military beret.
2" x 2" imprint area.

Size: One size fits most (10")

Care: Dry clean

Order requirements: 12 min.
(24 min. with imprint)

Packaging: Cellophane bag

Production time: In stock

BERE-501-001 **List:** \$7.50 (R)



Italian Gatsby Cap

65/35 polyester/cotton
tri-color Italian cap with
adjustable band.

List: \$7.08 (R)

ITAC-910-106



Culinary Hats/Caps

Chef Hats

100% cotton low crown chef's
cap with velcro closure. 3" band
height. 1" x 4" imprint area.

List: \$6.25 (R)

Chef Toques

100% cotton low crown chef's
toque with velcro closure. 3.25"
band height. 1" x 4" imprint area.

List: \$7.50 (R)

Baker's Caps

100% cotton baker's cap with
expandable elastic back. 4" band
height. 2.5" x 6" imprint area.

List: \$6.25 (R)

Dexter Caps

100% cotton dexter cap (6.5 oz.)
5" height with 1.5" cuff.

List: \$6.25 (R)

Fountain Caps

100% cotton fountain cap. 1.5" x 4" imprint area.

Size: One size fits most

Care: Machine wash cold, dry low

Order requirements: 12 min.

Packaging: Cellophane bag

Production time: In stock

List: \$6.25 (R)

FNTC-WH White

FNTC-RT White with Red Trim



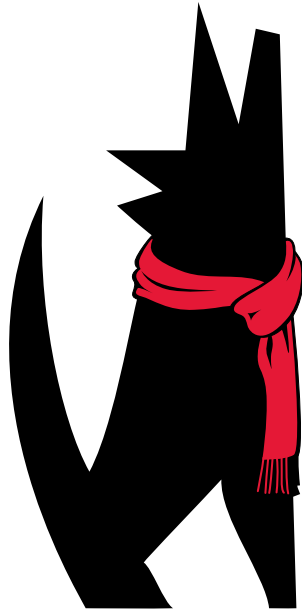
ASI 98085 | PPAI 114140 | SAGE 57515 | UPIC WOLFMARK

WOLFMARK

Promotional Apparel



*See our Culinary
catalog for more.*



WOLFMARK
Promotional Apparel

MUFFLERS & PASHMINAS

2011



Fashionable, legendary style.

Most items in stock and ready to ship.

Embroidery available.

Wolfmark has been a leader in quality, value
and customer service for over seventy years.

ASI 98085 | PPAI 114140 | SAGE 57515 | UPIC WOLFMARK

WOLFMARKTIES.COM



*Use the QR Code reader app
on your mobile device to visit
the Wolfmark website page.*

Cashmere Mufflers

A cashmere/wool blend muffler finished with 3" rope fringe.

Size: 12" x 60"

Care: Dry clean

Order requirements: 1 min.

Packaging: Cellophane bag

Production time: Stock

List: \$49.33 (R)

- CMUF-001 Black
- CMUF-002 Navy
- CMUF-012 Camel
- CMUF-013 Light Blue
- CMUF-016 Charcoal
- CMUF-025 Ivory
- CMUF-048 Fuchsia



Quantity discounts available!

Bamboo Mufflers

100% natural bamboo muffler finished with 3" rope fringe.
6" x 6" imprint area.

Size: 10" x 78"

Care: Dry clean

Order requirements: 12 min.

Packaging: Cellophane bag

Production time: Stock

List:

Plaid - **\$15.83 (R)**

- BMUF-P-RICH Red Plaid
- BMUF-P-MELT Tan/Black Check
- BMUF-P-WAKE Brown Plaid
- BMUF-P-SPLB Brown Stripe
- BMUF-P-KENW Green Check
- BMUF-P-WIND Green/Blue Plaid

Solid - **\$16.67 (R)**

- BMUF-S-001 Black
- BMUF-S-025 Ivory



Lambswool Mufflers

100% Merino lambswool muffler finished with 3" rope fringe.
6" x 6" imprint area.

Size: 10" x 72"

Care: Dry clean

Order requirements: 12 min.

Packaging: Cellophane bag

Production time: Stock

List: \$14.17 (R)



- LMUF-001 Black
- LMUF-002 Navy
- LMUF-003 Red
- LMUF-004 Maroon
- LMUF-012 Camel
- LMUF-016 Charcoal
- LMUF-019 Brown
- LMUF-025 Ivory

**More earth-friendly
products available
in the Wolfmark
Eco Products catalog.**

WOLFMARKTIES.COM

ASI 98085 | PPAI 114140 | SAGE 57515 | UPIC WOLFMARK

WOLFMARK
Promotional Apparel



Acrylic Mufflers

100% acrylic muffler with matching fringe.

Size: 12" x 55"

Care: Machine wash cold, dry low

Order requirements: 12 min.

Packaging: Cellophane bag

Production time: Stock

List: \$9.17 (R)

- AMUF-001 Black
- AMUF-002 Navy
- AMUF-003 Red
- AMUF-004 Maroon
- AMUF-012 Camel
- AMUF-016 Charcoal
- AMUF-025 Ivory



Pashminas

Versatile, soft and lightweight mercerized wool pashmina.

Size: 28" x 74"

Care: Dry clean

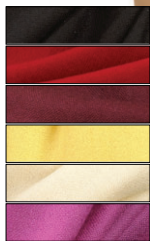
Order requirements: 12 min.

Packaging: Cellophane bag

Production time: Stock

List: \$22.92 (R)

- PASH-001 Black
- PASH-003 Red
- PASH-004 Maroon
- PASH-021 Yellow
- PASH-025 Ivory
- PASH-035 Desert Rose
- PASH-050 Cornflower Blue



Embroidery available!



Fleece Scarves

100% polyester solid color polar fleece muffler with merrowed edge.

Size: 9" x 60"

Care: Machine wash cold, dry low

Order requirements: 12 min.

Packaging: Cellophane bag

Production time: Stock

List: \$5.42 (R)



- PFNS-962-001 Black
- PFNS-962-002 Navy
- PFNS-962-003 Red
- PFNS-962-004 Maroon
- PFNS-962-005 Royal Blue
- PFNS-962-006 Hunter Green
- PFNS-962-015 Heather Gray
- PFNS-962-016 Charcoal

Quantity discounts available!

Aviator Scarves

100% double ply silk aviator scarf with 2.5" fringe. 2" x 14" imprint area.

Size: 56"

Care: Dry clean

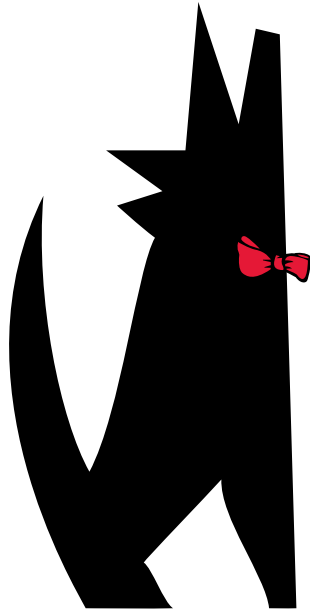
Order requirements: 12 min.

Packaging: Cellophane bag

Production time: Stock

List: \$17.00 (R)

- AVAS-256-003 Red
- AVAS-256-025 Ivory
- AVAS-256-027 Vegas Gold



WOLFMARK
Promotional Apparel

SCARVES

2011



Stock or custom for all occasions.

Most items in stock and ready to ship.

Screen-printing available.

Wolfmark has been a leader in quality, value
and customer service for over seventy years.

ASI 98085 | PPAI 114140 | SAGE 57515 | UPIC WOLFMARK

WOLFMARKTIES.COM



*Use the QR Code reader app
on your mobile device to visit
the Wolfmark website page.*

Solid Color Polyester Scarves

100% polyester solid color scarf available in white, black, navy blue, red, maroon, royal blue, hunter green, kelly green, purple, light and dark gray, gold, pink, brown, champagne beige, french blue, lime, vegas gold, orange and fuchsia. Matching ties available.

Care: Dry clean

Order requirements: 12 min.

Packaging: Cellophane bag

Production time: In stock

List:

8" x 45" - **\$10.00 (R)**

SCP-845-000	White
SCP-845-001	Black
SCP-845-002	Navy
SCP-845-003	Red
SCP-845-004	Maroon
SCP-845-005	Royal Blue
SCP-845-006	Hunter Green
SCP-845-007	Kelly Green
SCP-845-008	Purple
SCP-845-009	Light Gray
SCP-845-010	Dark Gray
SCP-845-011	Gold
SCP-845-014	Pink
SCP-845-019	Chocolate Brown
SCP-845-020	Champagne Beige
SCP-845-023	French Blue
SCP-845-026	Lime Green
SCP-845-027	Vegas Gold
SCP-845-046	Orange
SCP-845-048	Fuchsia

List:

30" x 30" - **\$13.33 (R)**

SCP-330-000	White
SCP-330-001	Black
SCP-330-002	Navy
SCP-330-003	Red
SCP-330-004	Maroon
SCP-330-005	Royal Blue
SCP-330-006	Hunter Green
SCP-330-007	Kelly Green
SCP-330-008	Purple
SCP-330-009	Light Gray
SCP-330-010	Dark Gray
SCP-330-011	Gold
SCP-330-014	Pink
SCP-330-019	Chocolate Brown
SCP-330-020	Champagne Beige
SCP-330-023	French Blue
SCP-330-026	Lime Green
SCP-330-027	Vegas Gold
SCP-330-046	Orange
SCP-330-048	Fuchsia

Quantity discounts available!

List:

21" x 21" - **\$10.00 (R)**

SCP-222-000	White
SCP-222-001	Black
SCP-222-002	Navy
SCP-222-003	Red
SCP-222-004	Maroon
SCP-222-005	Royal Blue
SCP-222-006	Hunter Green
SCP-222-007	Kelly Green
SCP-222-008	Purple
SCP-222-009	Light Gray
SCP-222-010	Dark Gray
SCP-222-011	Gold
SCP-222-014	Pink
SCP-222-019	Chocolate Brown
SCP-222-020	Champagne Beige
SCP-222-023	French Blue
SCP-222-026	Lime Green
SCP-222-027	Vegas Gold
SCP-222-046	Orange
SCP-222-048	Fuchsia

Matching ties available.



Screen-printing available.

Solid Color Silk Scarves

100% silk solid color scarf available in white, black, navy blue, red, maroon,* royal blue, hunter green, kelly green, purple, light and dark gray,* gold, pink, brown,* champagne beige,* french blue, lime,* vegas gold, orange and fuchsia. Matching ties available.

Care: Dry clean

Order requirements: 12 min.

Packaging: Cellophane bag

Production time: In stock

List:

8" x 45" - **\$13.33 (R)**

- SCS-845-000 White
- SCS-845-001 Black
- SCS-845-002 Navy
- SCS-845-003 Red
- SCS-845-004 Maroon
- SCS-845-005 Royal Blue
- SCS-845-006 Hunter Green
- SCS-845-007 Kelly Green
- SCS-845-008 Purple
- SCS-845-009 Light Gray
- SCS-845-010 Dark Gray
- SCS-845-011 Gold
- SCS-845-014 Pink
- SCS-845-019 Chocolate Brown
- SCS-845-020 Champagne Beige
- SCS-845-023 French Blue
- SCS-845-026 Lime Green
- SCS-845-027 Vegas Gold
- SCS-845-046 Orange
- SCS-845-048 Fuchsia

List:

10" x 54" - **\$15.00 (R)**

- SCS-330-000 White
- SCS-330-001 Black
- SCS-330-002 Navy
- SCS-330-003 Red
- SCS-330-005 Royal Blue
- SCS-330-006 Hunter Green
- SCS-330-007 Kelly Green
- SCS-330-008 Purple
- SCS-330-011 Gold
- SCS-330-014 Pink
- SCS-330-023 French Blue
- SCS-330-027 Vegas Gold
- SCS-330-046 Orange
- SCS-330-048 Fuchsia

*Maroon, light and dark gray, brown, champagne beige and lime green colors are not available in 10" x 54" silk scarves.

Screen-printing available.

Quantity discounts available!

List:

30" x 30" - **\$16.67 (R)**

- SCS-222-000 White
- SCS-222-001 Black
- SCS-222-002 Navy
- SCS-222-003 Red
- SCS-222-004 Maroon
- SCS-222-005 Royal Blue
- SCS-222-006 Hunter Green
- SCS-222-007 Kelly Green
- SCS-222-008 Purple
- SCS-222-009 Light Gray
- SCS-222-010 Dark Gray
- SCS-222-011 Gold
- SCS-222-014 Pink
- SCS-222-019 Chocolate Brown
- SCS-222-020 Champagne Beige
- SCS-222-023 French Blue
- SCS-222-026 Lime Green
- SCS-222-027 Vegas Gold
- SCS-222-046 Orange
- SCS-222-048 Fuchsia

Matching ties available.



Custom Wet Dyed Scarves

100% polyester or silk custom wet dyed scarf.
Can be made into almost any size.

Care: Dry clean

Order requirements: 50 min.

Packaging: Cellophane bag

Production time: 6-8 weeks

Polyester List:

8" x 45" - **\$23.33 (R)**

21" x 21" - **\$23.33 (R)**

30" x 30" - **\$32.50 (R)**

Silk List:

8" x 45" - **\$27.08 (R)**

21" x 21" - **\$27.08 (R)**

30" x 30" - **\$37.50 (R)**

Custom designed wet dyed scarves start with white fabric and use permanent dyes to create the background colors and logos.

The wet dye process is best for colorful designs, PMS color matches and when producing matching ladies scarves.

Complimentary art up to 8 colors, virtual proof, pre-production sample and set-up included with order. Additional color charges apply. Minimum order quantity of 50.

Matching ties available.

Custom Knot Scarves

Custom woven or wet dyed polyester or silk knot scarves.

Quoted per specifications.

Pre-production sample and set-up included with order.



Custom ties, vests, bow ties, cascades, crossovers, kentucky colonels, floppy bows, rosettes, tulip bows and cummerbunds also available.

Custom Photo Process Scarves

Four color process photographic image printed on polyester or silk scarves.

Quoted per specifications.

Pre-production sample and set-up included with order. Minimum order quantity of 50.



Matching ties available.

Quantity discounts available!

Full and Half Sarongs

100% polyester or silk body wraps in 40" x 60" and 20" x 60" standard sizes. Solid color or custom wet dyed. Can be made into almost any size. Minimum order quantity of 50.

Quoted per specifications.

Corporate Collection Scarves

100% silk Corporate Collection patterned scarf.

Care: Dry clean

Order requirements: 12 min.

Packaging: Cellophane bag

Production time: In stock

List:

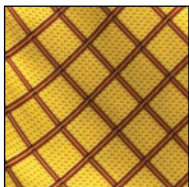
8" x 45" - **\$17.00 (R)**

- CORP-845-510 Aston
- CORP-845-511 Vintner
- CORP-845-512 Felton

List:

21" x 21" - **\$17.00 (R)**

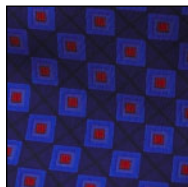
- CORP-222-510 Aston
- CORP-222-511 Vintner
- CORP-222-512 Felton



Aston



Vintner



Felton

Matching ties available.

Career Collection Scarves

100% silk Career Collection patterned scarf.

Care: Dry clean

Order requirements: 12 min.

Packaging: Cellophane bag

Production time: In stock

List:

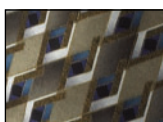
8" x 45" - **\$13.33 (R)**

- CARE-845-304 Drake
- CARE-845-308 Marquette
- CARE-845-312 LaSalle Navy
- CARE-845-313 LaSalle Gold
- CARE-845-314 Hamilton
- CARE-845-316 Pacer
- CARE-845-320 York

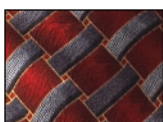
List:

21" x 21" - **\$13.33 (R)**

- CARE-222-304 Drake
- CARE-222-308 Marquette
- CARE-222-312 LaSalle Navy
- CARE-222-313 LaSalle Gold
- CARE-222-314 Hamilton
- CARE-222-316 Pacer
- CARE-222-320 York



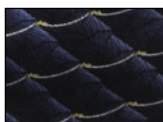
Drake



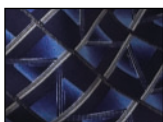
Marquette



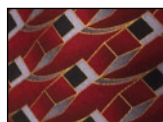
Lasalle



Hamilton



Pacer



York

Carlton Scarves

Carlton wet dyed 100% silk scarf.
8" x 45" and 21" x 21" sizes available.

Care: Dry clean

Order requirements: 12 min.

Packaging: Cellophane bag

Production time: In stock

List:

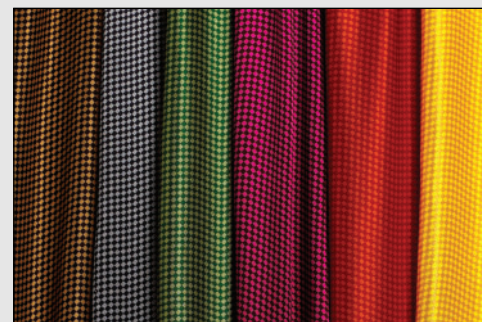
8" x 45" - **\$17.00 (R)**

- CRLT-845-350 Brown
- CRLT-845-351 Gray
- CRLT-845-352 Green
- CRLT-845-353 Pink
- CRLT-845-354 Red
- CRLT-845-355 Yellow

List:

21" x 21" - **\$17.00 (R)**

- CRLT-222-350 Brown
- CRLT-222-351 Gray
- CRLT-222-352 Green
- CRLT-222-353 Pink
- CRLT-222-354 Red
- CRLT-222-355 Yellow



Matching ties available.

Quantity discounts available!



Use the QR Code reader app on your mobile device to visit the website page.

Saville Striped Scarves

Saville wet dyed striped 100% silk or polyester striped scarf. 8" x 45" and 21" x 21" sizes available.

Care: Dry clean

Order requirements: 12 min.

Packaging: Cellophane bag

Production time: In stock

Polyester List: \$12.50 (R)

8" x 45"

- SVLP-845-634 Black
- SVLP-845-635 Lime Green
- SVLP-845-636 Navy Blue
- SVLP-845-637 Orange
- SVLP-845-638 Pink
- SVLP-845-639 Purple
- SVLP-845-640 Red

Silk List: \$17.00 (R)

8" x 45"

- SVLS-845-634 Black
- SVLS-845-635 Lime Green
- SVLS-845-636 Navy Blue
- SVLS-845-637 Orange
- SVLS-845-638 Pink
- SVLS-845-639 Purple
- SVLS-845-640 Red

Quantity discounts available!

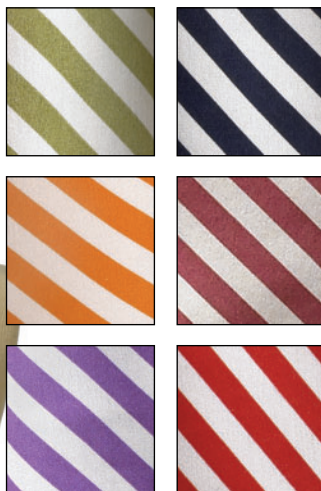
Matching ties available.

21" x 21"

- SVLP-222-634 Black
- SVLP-222-635 Lime Green
- SVLP-222-636 Navy Blue
- SVLP-222-637 Orange
- SVLP-222-638 Pink
- SVLP-222-639 Purple
- SVLP-222-640 Red

21" x 21"

- SVLS-222-634 Black
- SVLS-222-635 Lime Green
- SVLS-222-636 Navy Blue
- SVLS-222-637 Orange
- SVLS-222-638 Pink
- SVLS-222-639 Purple
- SVLS-222-640 Red



Ellison Bay Scarves

Ellison Bay wet dyed 100% silk or polyester patterned scarf. 8" x 45" and 21" x 21" sizes.

Care: Dry clean

Order requirements: 12 min.

Packaging: Cellophane bag

Production time: In stock

Polyester List: \$12.50 (R)

8" x 45"

- ELBP-845-323 Light Blue
- ELBP-845-324 Navy Blue
- ELBP-845-325 Orange
- ELBP-845-326 Pink
- ELBP-845-327 Red

21" x 21"

- ELBP-222-323 Light Blue
- ELBP-222-324 Navy Blue
- ELBP-222-325 Orange
- ELBP-222-326 Pink
- ELBP-222-327 Red

Silk List: \$17.00 (R)

8" x 45"

- ELBS-845-323 Light Blue
- ELBS-845-324 Navy Blue
- ELBS-845-325 Orange
- ELBS-845-326 Pink
- ELBS-845-327 Red

21" x 21"

- ELBS-222-323 Light Blue
- ELBS-222-324 Navy Blue
- ELBS-222-325 Orange
- ELBS-222-326 Pink
- ELBS-222-327 Red



WOLFMARKTIES.COM

ASI 98085 | PPAI 114140 | SAGE 57515 | UPIC WOLFMARK





Use the QR Code reader app on your mobile device to visit the website page.

Vasari Scarves

Vasari wet dyed 100% silk or polyester patterned scarf. 8" x 45" and 21" x 21" sizes available.

Care: Dry clean

Order requirements: 12 min.

Packaging: Cellophane bag

Production time: In stock

Polyester List: \$12.50 (R)

8" x 45"

- VSRP-845-335 Black
- VSRP-845-336 Lime Green
- VSRP-845-337 Navy Blue
- VSRP-845-338 Orange
- VSRP-845-339 Pink
- VSRP-845-340 Red
- VSRP-845-341 Royal Blue
- VSRP-845-342 Yellow

Quantity discounts available!

Matching ties available.

21" x 21"

- VSRP-222-335 Black
- VSRP-222-336 Lime Green
- VSRP-222-337 Navy Blue
- VSRP-222-338 Orange
- VSRP-222-339 Pink
- VSRP-222-340 Red
- VSRP-222-341 Royal Blue
- VSRP-222-342 Yellow

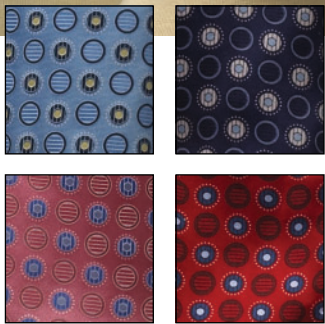
Silk List: \$17.00 (R)

8" x 45"

- VSRS-845-335 Black
- VSRS-845-336 Lime Green
- VSRS-845-337 Navy Blue
- VSRS-845-338 Orange
- VSRS-845-339 Pink
- VSRS-845-340 Red
- VSRS-845-341 Royal Blue
- VSRS-845-342 Yellow

21" x 21"

- VSRS-222-335 Black
- VSRS-222-336 Lime Green
- VSRS-222-337 Navy Blue
- VSRS-222-338 Orange
- VSRS-222-339 Pink
- VSRS-222-340 Red
- VSRS-222-341 Royal Blue
- VSRS-222-342 Yellow



Quantity discounts available!

Matching ties available.



Newport Scarves

Newport wet dyed 100% silk or polyester scarf.
8" x 45" and 21" x 21" sizes available.

Care: Dry clean

Order requirements: 12 min.

Packaging: Cellophane bag

Production time: In stock

Polyester List: \$12.50 (R)

8" x 45"

NWPP-845-328	Black
NWPP-845-329	Navy Blue
NWPP-845-330	Orange
NWPP-845-331	Purple
NWPP-845-332	Red
NWPP-845-333	Royal Blue
NWPP-845-334	Teal

Silk List: \$17.00 (R)

8" x 45"

NWPS-845-328	Black
NWPS-845-329	Navy Blue
NWPS-845-330	Orange
NWPS-845-331	Purple
NWPS-845-332	Red
NWPS-845-333	Royal Blue
NWPS-845-334	Teal

Quantity discounts available!

Matching ties available.

21" x 21"

NWPP-222-328	Black
NWPP-222-329	Navy Blue
NWPP-222-330	Orange
NWPP-222-331	Purple
NWPP-222-332	Red
NWPP-222-333	Royal Blue
NWPP-222-334	Teal

21" x 21"

NWPS-222-328	Black
NWPS-222-329	Navy Blue
NWPS-222-330	Orange
NWPS-222-331	Purple
NWPS-222-332	Red
NWPS-222-333	Royal Blue
NWPS-222-334	Teal



Argyle Scarves

Argyle wet dyed 100% silk scarf.
8" x 45" and 21" x 21" sizes available.

Care: Dry clean

Order requirements: 12 min.

Packaging: Cellophane bag

Production time: In stock

List:

8" x 45" - **\$17.00 (R)**

ARGY-845-343	Maroon
ARGY-845-344	Gray
ARGY-845-345	Pink
ARGY-845-346	Royal Blue

List:

21" x 21" - **\$17.00 (R)**

ARGY-222-343	Maroon
ARGY-222-344	Gray
ARGY-222-345	Pink
ARGY-222-346	Royal Blue

Matching ties available.



WOLFMARKTIES.COM

ASI 98085 | PPAI 114140 | SAGE 57515 | UPIC WOLFMARK



Promotional Apparel

Novelty Scarves

8" x 45" - 100% silk stain resistant wet dyed scarf in various novelty designs.

Care: Dry clean

Order requirements: 12 min.

Packaging: Cellophane bag

Production time: In stock

List: \$12.67 (R)



Use the QR Code reader app on your mobile device to visit the website page.

Matching ties available.



Wine Maker

BEVR-845-101



Vin De Bordeaux

BEVR-845-102



Vintage

BEVR-845-105



Cosmopolitan

BEVR-845-136



Corkscrew

BEVR-845-151



Wine & Cheese

BEVR-845-157



Daily Grind

BEVR-845-159



Jockey Silks

EQUE-845-134



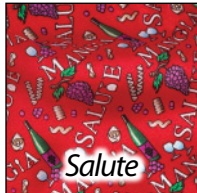
Italiano

ITAL-845-119



Italian Dishes

ITAL-845-148



Salute

ITAL-845-152



Amore

ITAL-845-153



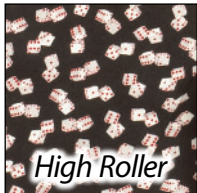
Pasta Toss

ITAL-845-171



Full House

GAMB-845-175



High Roller

GAMB-845-180



Jackpot

GAMB-845-181



Lucky Day

GAMB-845-425



Pepper (small)

HOTS-845-111



Pepper (large)

HOTS-845-112



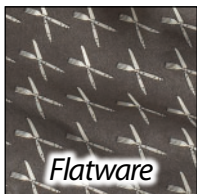
Flaming Chili

HOTS-845-149



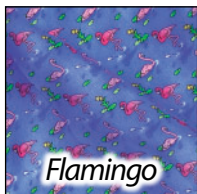
Utensils

KITC-845-163



Flatware

KITC-845-186



Flamingo

MISC-845-129



Fruit

MISC-845-169



Pink Ribbon/Black

MISC-845-117



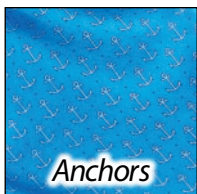
Pink Ribbon/Pink

MISC-845-116



Nautical Flags

NAUT-845-144



Anchors

NAUT-845-187



Harbor Lights

NAUT-845-188



Starboard

NAUT-845-189



Royal Regatta

NAUT-845-190



Stars & Stripes

PATR-845-201



Liberty & Justice

PATR-845-206



The Flag

PATR-845-202



Go USA

PATR-845-208



Wavy Flag

PATR-845-205



Spirit of America

PATR-845-209

Solid Color Polyester Knot Scarves

100% polyester solid color knot scarf with velcro band. Available in white, black, navy blue, red, maroon, royal blue, hunter green, kelly green, purple, light and dark gray, gold and orange. Matching ties available.

Care: Dry clean

Order requirements: 12 min.

Packaging: Cellophane bag

Production time: In stock

List: \$10.00 (R)

- SCP-520-000 White
- SCP-520-001 Black
- SCP-520-002 Navy
- SCP-520-003 Red
- SCP-520-004 Maroon
- SCP-520-005 Royal Blue
- SCP-520-006 Hunter Green
- SCP-520-007 Kelly Green
- SCP-520-008 Purple
- SCP-520-009 Light Gray
- SCP-520-010 Dark Gray
- SCP-520-011 Gold
- SCP-520-046 Orange



Quantity discounts available!

Screen-printing

Enhance your logo or design with screen-printing!

Quantity	One color	Quantity	One color
12-23	\$9.58 (R)	144-299	\$4.08 (R)
24-95	\$6.00 (R)	300-499	\$3.25 (R)
96-143	\$4.85 (R)	500+	\$2.63 (R)

Maximum print area: 14" x 14"

Production time: 10-12 business days from approved art.

Screen set-up charge: \$75.00 (R) - includes ground shipping to screen-printer, artwork, necessary flash charges and under base.

Re-order set-up charge: \$25.00 (R)

Poly bag charge: \$0.50 (R)

Aviator Scarves

100% double-ply silk aviator scarf with 2.5" fringe. Available in red, ivory and vegas gold.

Size: 56"

Care: Dry clean

Order requirements: 12 min.

Packaging: Cellophane bag

Production time: In stock

List: \$17.00 (R)

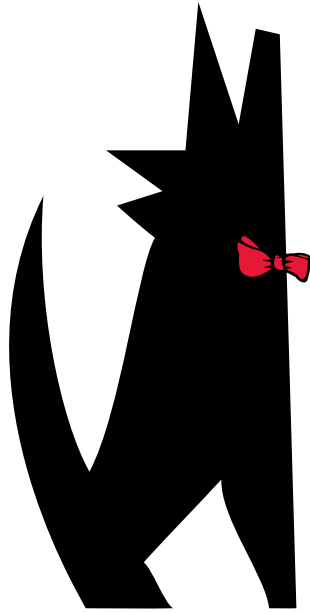
- AVAS-256-003 Red
- AVAS-256-003 Ivory
- AVAS-256-003 Vegas Gold



See our Mufflers & Pashminas catalog for more.



Use the QR Code reader app on your mobile device to visit the Wolfmark website page.



WOLFMARK
Promotional Apparel

SASHES & STOLES

2011





For those special ceremonial events.

Most items in stock and ready to ship.

Embroidery and screen-printing available.

Wolfmark has been a leader in quality, value
and customer service for over seventy years.

ASI 98085 | PPAI 114140 | SAGE 57515 | UPIC WOLFMARK

WOLFMARKTIES.COM



*Use the QR Code reader app
on your mobile device to visit
the Wolfmark website page.*

Pageant Sashes

Quality bridal satin. 2" x 14" imprint area.

Size: 4" x 70"

Care: Dry clean

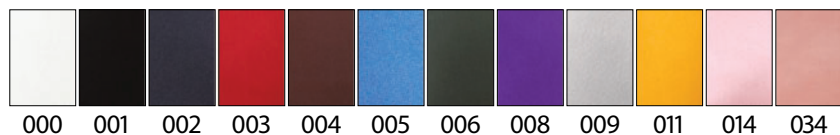
Order requirements: 12 min.

Packaging: Bulk

Production time: Stock

List: \$10.83 (R)

- PAGN-225-000 White
- PAGN-225-001 Black
- PAGN-225-002 Navy
- PAGN-225-003 Red
- PAGN-225-004 Maroon
- PAGN-225-005 Royal Blue
- PAGN-225-006 Hunter Green
- PAGN-225-008 Purple
- PAGN-225-009 Light Gray
- PAGN-225-011 Gold
- PAGN-225-014 Pink
- PAGN-225-034 Salmon Pink



Ideal for screen-printing or embroidery!

Graduation Honor Cords

Quality rayon with 4" tassel.

Size: 60"

Care: Dry clean

Order requirements: 12 min.

Packaging: Bulk

Production time: Stock

List: \$9.98 (R)

- GHCD-499-000 White
- GHCD-499-001 Black
- GHCD-499-002 Navy
- GHCD-499-003 Red
- GHCD-499-004 Maroon
- GHCD-499-005 Royal Blue
- GHCD-499-006 Hunter Green
- GHCD-499-008 Purple
- GHCD-499-009 Light Gray
- GHCD-499-011 Gold



Quantity discounts available!

Graduation Stoles

Quality bridal satin. 3" x 14" imprint area.

Care: Dry clean

Order requirements: 12 min.

Packaging: Bulk

Production time: Stock



List:

5" x 60" - \$10.83 (R)

- GSTO-500-000 White
- GSTO-500-001 Black
- GSTO-500-002 Navy
- GSTO-500-003 Red
- GSTO-500-004 Maroon
- GSTO-500-005 Royal Blue
- GSTO-500-006 Hunter Green
- GSTO-500-008 Purple
- GSTO-500-009 Light Gray
- GSTO-500-011 Gold
- GSTO-500-014 Pink
- GSTO-500-034 Salmon Pink

5" x 72" - \$13.32 (R)

- GSTO-505-000 White
- GSTO-505-001 Black
- GSTO-505-002 Navy
- GSTO-505-003 Red
- GSTO-505-004 Maroon
- GSTO-505-005 Royal Blue
- GSTO-505-006 Hunter Green
- GSTO-505-008 Purple
- GSTO-505-009 Light Gray
- GSTO-505-011 Gold
- GSTO-505-014 Pink
- GSTO-505-034 Salmon Pink

Custom Sashes and Stoles

Quality bridal satin sashes and stoles for those special ceremonial events. Customize with embroidery or our industry exclusive wet dye process.

Care: Dry clean

Order requirements: 50 min.

Packaging: Cellophane bag

Production time: 6-8 weeks

Embroidery

Stitch by stitch, custom designed embroidered sashes and stoles...



Wet dye

List: \$23.33 (R)

Custom Wet Dyed

Custom designed wet dyed sashes and stoles start with white fabric and use permanent dyes to create both the background colors and logos.

The wet dye process is best for colorful designs and when matching PMS colors.

Complimentary art up to 8 colors, virtual proof, pre-production sample and set-up included with order. Additional color charges apply.

Embroider

List: \$23.33 (R)



Use the QR Code reader app on your mobile device to visit the Wolfmark website page.

Additional School Items

Wolfmark carries products perfect for schools and universities.

Striped Ties

100% polyester School Striped ties. 58" standard length, 3-7/8" width.

Care: Dry clean

Order requirements: 12 min.

Production time: In stock

List: \$10.83 (R)



See our Ties catalog for available colors.

Novelty Ties

100% polyester novelty ties with stain resistance.

Care: Dry clean

Order requirements: 12 min.

Production time: In stock

List: \$10.00 (R)

Fleece Accessories

Customize these 100% polyester solid color polar fleece accessories with school logos.

Size: One size fits most

Care: Gentle wash, dry low

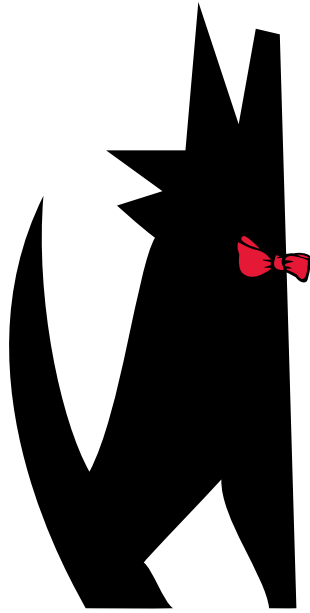
Order requirements: 12 min.

Production time: In stock

List: \$6.33 (R)



See our Fleece Accessories catalog for available colors.



WOLFMARK
Promotional Apparel

SCRUBS

2011



Unisex comfort.

Embroidery and screen-printing available.

Wolfmark has been a leader in quality, value
and customer service for over seventy years.

ASI 98085 | PPAI 114140 | SAGE 57515 | UPIC WOLFMARK

WOLFMARKTIES.COM



*Use the QR Code reader app
on your mobile device to visit
the Wolfmark website page.*

Scrub Shirts

55/45 polyester/cotton scrubs with V-neck and chest pocket.

Size: XS to 5XL

Care: Machine wash cold, dry low

Order requirements: 12 min.

Packaging: Bulk

Production time: In stock

List: \$12.83 (R)

SCRUB-T002	Navy
SCRUB-T005	Royal Blue
SCRUB-T014	Dark Pink
SCRUB-T023	Light Blue
SCRUB-T029	Khaki
SCRUB-T037	Teal
SCRUB-T049	Steel Blue

List: \$17.00 (R)

SCRUB-TCAM Camouflage



Ideal for screen-printing or embroidery!

Scrub Pants

55/45 polyester/cotton scrubs with draw string and back pocket.

Size: XS to 5XL

Care: Machine wash cold, dry low

Order requirements: 12 min.

Packaging: Bulk

Production time: In stock

List: \$13.25 (R)

SCRUB-P002	Navy
SCRUB-P005	Royal Blue
SCRUB-P014	Dark Pink
SCRUB-P023	Light Blue
SCRUB-P029	Khaki
SCRUB-P037	Teal
SCRUB-P049	Steel Blue

List: \$17.42 (R)

SCRUB-PCAM Camouflage



Services

Embroidery or screen-print services for blank products are available.

Note: Charges do not include the cost of the item.

Embroidery

Stitch count	12-23	24-71
5,000	\$10.97	\$5.25 (R)
6,000	\$12.00	\$5.67 (R)
7,000	\$13.05	\$6.08 (R)
8,000	\$14.08	\$6.50 (R)
9,000	\$15.13	\$6.92 (R)

Each additional 1000 stitches \$0.92 \$0.42 (R)

Production time:

Digitizing and emailed sewout approximately 3 business days from approved art.

Production is 5-7 business days from approved sewout.

Add 5 business days for a production sample.

Color change charge: \$30.00

Digitizing charge:

\$16.67 per 1,000 stitches

Clear backing: \$2.08/location.

Screen-printing

Quantity	One color
12-23	\$9.58 (R)
24-95	\$6.00 (R)
96-143	\$4.85 (R)
144-299	\$4.08 (R)
300-499	\$3.25 (R)
500+	\$2.63 (R)

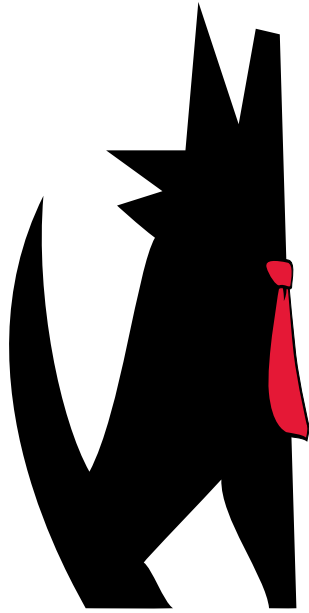
Maximum print area: 14" x 14"

Production time: 10 to 12 business days from approved art.

Screen set-up charge: \$75.00 includes artwork, necessary flash charges and under base.

Re-order set-up charge: \$25.00

Prices subject to change.



WOLFMARK
Promotional Apparel

TIES

2011



Largest selection in the industry.

Solids, stripes, patterns or custom available.

Wolfmark has been a leader in quality, value
and customer service for over seventy years.

ASI 98085 | PPAI 114140 | SAGE 57515 | UPIC WOLFMARK

WOLFMARKTIES.COM



*Use the QR Code reader app
on your mobile device to visit
the Wolfmark website page.*

Solid Color Polyester Ties

100% polyester solid color neck tie available in white, black, navy blue, red, maroon, royal blue, hunter green, kelly green, purple, light and dark gray, gold, pink, brown, champagne beige, light yellow, french blue, turquoise, lime green, vegas gold, teal, violet, orange and fuchsia. 58" standard length, 3 7/8" width.

Care: Dry clean

Order requirements: 12 min.

Packaging: Cellophane bag

Production time: Stock

List: \$9.17 (R)

- SCP-058-000 White
- SCP-058-001 Black
- SCP-058-002 Navy
- SCP-058-003 Red
- SCP-058-004 Maroon
- SCP-058-005 Royal Blue
- SCP-058-006 Hunter Green
- SCP-058-007 Kelly Green
- SCP-058-008 Purple
- SCP-058-009 Light Gray
- SCP-058-010 Dark Gray
- SCP-058-011 Gold
- SCP-058-014 Pink
- SCP-058-019 Chocolate Brown
- SCP-058-020 Champagne Beige
- SCP-058-021 Light Yellow
- SCP-058-023 French Blue
- SCP-058-024 Turquoise
- SCP-058-026 Lime Green
- SCP-058-027 Vegas Gold
- SCP-058-028 Athletic Gold
- SCP-058-032 Teal
- SCP-058-033 Violet
- SCP-058-046 Orange
- SCP-058-048 Fuchsia

Quantity discounts available!



Matching solid color scarves available.



000
001
002
003
004
005
006
007
008
009
010
011
014
019
020
021
023
024
026
027
028
032
033
046
048

Solid Color Silk Ties

100% silk solid color neck tie available in white, black, navy blue, red, maroon, royal blue, hunter green, kelly green, purple, light and dark gray, gold, pink, brown, champagne beige, french blue, lime green, vegas gold, orange and fuchsia. 58" standard length, 3-7/8" width.

Care: Dry clean

Order requirements: 12 min.

Packaging: Cellophane bag

Production time: Stock

List: \$13.33 (R)

- | | | | |
|-------------|-----------------|-------------|-----------------|
| SCS-058-000 | White | SCS-058-020 | Champagne Beige |
| SCS-058-001 | Black | SCS-058-023 | French Blue |
| SCS-058-002 | Navy | SCS-058-026 | Lime Green |
| SCS-058-003 | Red | SCS-058-027 | Vegas Gold |
| SCS-058-004 | Maroon | SCS-058-046 | Orange |
| SCS-058-005 | Royal Blue | SCS-058-048 | Fuchsia |
| SCS-058-006 | Hunter Green | | |
| SCS-058-007 | Kelly Green | | |
| SCS-058-008 | Purple | | |
| SCS-058-009 | Light Gray | | |
| SCS-058-010 | Dark Gray | | |
| SCS-058-011 | Gold | | |
| SCS-058-014 | Pink | | |
| SCS-058-019 | Chocolate Brown | | |



Solid Color Skinny Ties

100% polyester solid color skinny neck tie available in black, navy blue, red, maroon, royal blue and french. 58" standard length, 1-3/4" width.

Care: Dry clean

Order requirements: 12 min.

Packaging: Cellophane bag

Production time: Stock

List: \$9.17 (R)

- | | |
|--------------|-------------|
| SCPN-058-001 | Black |
| SCPN-058-002 | Navy |
| SCPN-058-003 | Red |
| SCPN-058-004 | Maroon |
| SCPN-058-005 | Royal Blue |
| SCPN-058-023 | French Blue |



000
001
002
003
004
005
006
007
008
009
010
011
014
019
020
023
026
028
046
048

Quantity discounts available!

Matching solid color scarves available.



Custom Ties

100% polyester or silk custom ties. 58" standard length, 3-7/8" width. Custom lengths/widths available.

Care: Dry clean

Order requirements: 50 min.

Packaging: Cellophane bag

Production time: 6-8 weeks

Custom Wet Dyed

Custom designed wet dyed ties start with white fabric and use permanent dyes to create both the background colors and logos.

The wet dye process is best for colorful designs, PMS color matches and when producing matching ladies scarves.

Complimentary art up to 8 colors, virtual proof, pre-production sample and set-up included with order. Additional color charges apply. Minimum order quantity of 50. Clip-ons available in 18", 20" and 22"

Custom Woven

A traditional process using pre-dyed threads woven together to create the design as part of the fabric.

The woven process is the correct way to produce stripes and tone on tone designs.

Complimentary art up to 6 colors for polyester and 8 colors for silk, virtual proof, pre-production sample and set-up included with order. Additional color charges apply. Minimum order quantity of 50. Clip-ons available in 18", 20" and 22"

Matching wet dyed scarves available.

Custom vests, bow ties, cascades, crossovers, floppy bows, rosettes, kentucky colonels, tulip bows and cummerbunds also available.

Wet Dyed

Polyester List: \$23.33 (R)

Silk List: \$27.08 (R)



Woven

Polyester List: \$23.33 (R)

Silk List: \$27.08 (R)

Custom Seven Fold Ties

Custom designed wet dyed or woven 100% silk tie meticulously hand ironed and folded into itself using 7 layers of fabric. 58" standard length, 3-7/8" width. Custom lengths/widths available.

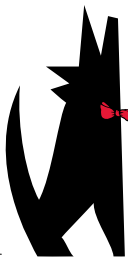
Quoted per specifications.

Pre-production sample and set-up included included with order. Minimum order quantity of 50.



ASI 98085 | PPAI 114140 | SAGE 57515 | UPIC WOLFMARK

WOLFMARK



Promotional Apparel



Custom Photo Process

Four color process photographic image printed on polyester or silk ties. 58" standard length, 3-7/8" width. Custom lengths/widths available.

Care: Dry clean

Order requirements: 50 min.

Packaging: Cellophane bag

Production time: 6-8 weeks

Quoted per specifications.

Pre-production sample and set-up included with order. Minimum order quantity of 50.



Matching scarves available.

Quantity discounts available!

Custom scarves, vests, bow ties, knot scarves, cascades, crossovers, floppy bows, kentucky colonels, rosettes, tulip bows, sarongs and cummerbunds also available.

Corporate Collection Ties

100% silk Corporate Collection patterned ties. 58" standard length, 3-7/8" width.

Care: Dry clean

Order requirements: 12 min.

Packaging: Cellophane bag

Production time: Stock

List: \$17.00 (R)

CORP-058-440 Danver

CORP-058-509 Girvan

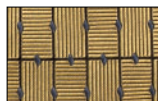
CORP-058-510 Aston

CORP-058-511 Vintner

CORP-058-512 Felton



Danver



Girvan



Aston



Vintner



Felton

Quantity discounts available!

Vasari Ties

100% polyester or silk Vasari patterned ties with stain resistance. 58" standard length, 3-7/8" width.

Care: Dry clean

Order requirements: 12 min.

Packaging: Cellophane bag

Production time: Stock

Polyester List: \$12.50 (R)

VSRP-058-335 Black

VSRP-058-336 Lime

VSRP-058-337 Navy Blue

VSRP-058-338 Orange

VSRP-058-339 Pink

VSRP-058-340 Red

VSRP-058-341 Royal Blue

VSRP-058-342 Yellow

Silk List: \$17.00 (R)

VSRS-058-335 Black

VSRS-058-336 Lime

VSRS-058-337 Navy Blue

VSRS-058-338 Orange

VSRS-058-339 Pink

VSRS-058-340 Red

VSRS-058-341 Royal Blue

VSRS-058-342 Yellow



Career Collection Ties

100% silk Career Collection patterned ties. 58" standard length, 3-7/8" width.

Care: Dry clean

Order requirements: 12 min.

Packaging: Cellophane bag

Production time: Stock

List: \$13.33 (R)

CARE-058-304 Drake

CARE-058-308 Marquette

CARE-058-312 LaSalle Navy

CARE-058-313 LaSalle Gold

CARE-058-314 Hamilton

CARE-058-316 Pacer

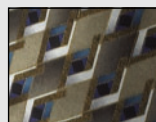
CARE-058-320 York



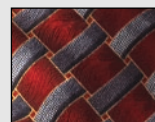
Pacer

LaSalle

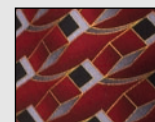
Hamilton



Drake



Marquette



York

Matching wet dyed scarves available.



Use the QR Code reader app on your mobile device to visit the Wolfmark website page.

Newport Ties

100% silk Newport checkered pattern ties with stain resistance.
58" standard length, 3-7/8" width.

Care: Dry clean

Order requirements: 12 min.

Packaging: Cellophane bag

Production time: Stock

Polyester List: \$12.50 (R)

- NWPP-058-328 Black
- NWPP-058-329 Navy Blue
- NWPP-058-330 Orange
- NWPP-058-331 Purple
- NWPP-058-332 Red
- NWPP-058-333 Royal Blue
- NWPP-058-334 Teal

Silk List: \$17.00 (R)

- NWPS-058-328 Black
- NWPS-058-329 Navy blue
- NWPS-058-330 Orange
- NWPS-058-331 Purple
- NWPS-058-332 Red
- NWPS-058-333 Royal blue
- NWPS-058-334 Teal



Carlton Ties

100% silk Carlton checkered pattern ties with stain resistance. 58" standard length, 3-7/8" width.

Care: Dry clean

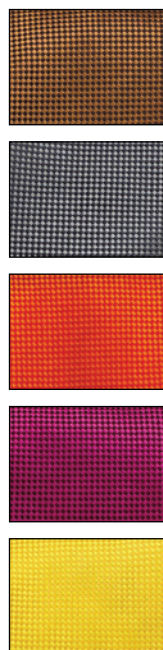
Order requirements: 12 min.

Packaging: Cellophane bag

Production time: Stock

List: \$17.00 (R)

- CRLT-058-350 Brown
- CRLT-058-351 Gray
- CRLT-058-352 Green
- CRLT-058-353 Pink
- CRLT-058-354 Red
- CRLT-058-355 Yellow



Ellison Bay Ties

100% polyester or silk Ellison Bay patterned ties with stain resistance.
58" standard length, 3-7/8" width.

Care: Dry clean

Order requirements: 12 min.

Packaging: Cellophane bag

Production time: Stock

Polyester List: \$12.50 (R)

- ELBP-058-323 Light Blue
- ELBP-058-324 Navy Blue
- ELBP-058-325 Orange
- ELBP-058-326 Pink
- ELBP-058-327 Red

Silk List: \$17.00 (R)

- ELBS-058-323 Light Blue
- ELBS-058-324 Navy Blue
- ELBS-058-325 Orange
- ELBS-058-326 Pink
- ELBS-058-327 Red



Matching wet dyed scarves available.

Beckett Ties

100% polyester Beckett tone on tone ties with stain resistance.
58" standard length, 3-7/8" width.

Care: Dry clean

Order requirements: 12 min.

Packaging: Cellophane bag

Production time: Stock

List: **\$12.50 (R)**

- BECK-058-001 Black
- BECK-058-002 Navy Blue
- BECK-058-003 Red
- BECK-058-004 Maroon
- BECK-058-005 Royal Blue
- BECK-058-006 Hunter Green



Quantity discounts available!

Argyle Ties

100% silk Argyle patterned ties with stain resistance.
58" standard length, 3-7/8" width.

Care: Dry clean

Order requirements: 12 min.

Packaging: Cellophane bag

Production time: Stock

List: **\$17.00 (R)**

- ARGY-058-343 Maroon
- ARGY-058-344 Gray
- ARGY-058-345 Pink
- ARGY-058-346 Royal Blue



Matching wet dyed scarves available.

Somerset Striped Ties

100% polyester Somerset striped ties.
58" standard length, 3-7/8" width.

Care: Dry clean

Order requirements: 12 min.

Packaging: Cellophane bag

Production time: Stock

Polyester List: **\$12.50 (R)**

- SMRP-058-641 Lime
- SMRP-058-642 Orange
- SMRP-058-643 Royal Blue

Silk List: **\$17.00 (R)**

- SMRS-058-641 Lime
- SMRS-058-642 Orange
- SMRS-058-643 Royal Blue



ASI 98085 | PPAI 114140 | SAGE 57515 | UPIC WOLFMARK

WOLFMARK



Promotional Apparel

Signature Striped Ties

100% polyester Somerset striped ties.
58" standard length, 3-7/8" width.

Care: Dry clean

Order requirements: 12 min.

Packaging: Cellophane bag

Production time: Stock

List: \$10.83 (R)

SIGP-058-454	Sir Walter
SIGP-058-645	Marsden
SIGP-058-649	Regent
SIGP-058-650	America
SIGP-058-651	Argyle
SIGP-058-652	Bradfield
SIGP-058-658	East Yorkshire
SIGP-058-659	Ghurka
SIGP-058-660	Overland Navy Blue
SIGP-058-661	Overland Black
SIGP-058-663	West India Maroon/Navy Blue/Gray
SIGP-058-664	West India Maroon/Black/Gray
SIGP-058-665	West India Maroon/Black/Gold
SIGP-058-668	Royal Medical
SIGP-058-670	Schofield
SIGP-058-677	Pace Maroon
SIGP-058-678	Pace Navy Blue
SIGP-058-680	Brookshire
SIGP-058-683	Worcester
SIGP-058-684	Marist
SIGP-058-691	Stanton
SIGP-058-695	Hampshire
SIGP-058-696	Fairfield Navy Blue/Gray/Red
SIGP-058-697	Fairfield Navy Blue/Maroon/Gold
SIGP-058-712	Wellington



664



Saville Striped Ties

100% polyester or silk Saville striped ties with stain resistance. 58" standard length, 3-7/8" width.

Care: Dry clean

Order requirements: 12 min.

Packaging: Cellophane bag

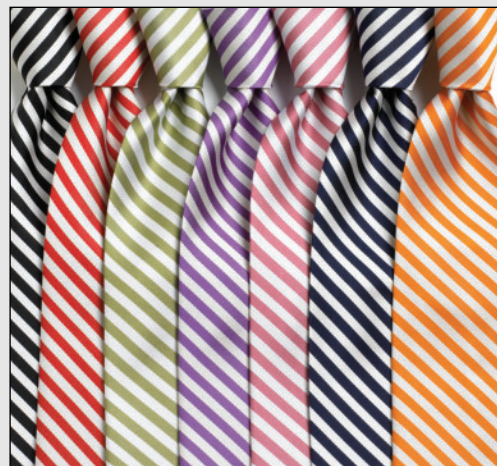
Production time: Stock

Polyester List: \$12.50 (R)

SVLP-058-634	Black
SVLP-058-635	Lime
SVLP-058-636	Navy Blue
SVLP-058-637	Orange
SVLP-058-638	Pink
SVLP-058-639	Purple
SVLP-058-640	Red

Silk List: \$17.00 (R)

SVLS-058-634	Black
SVLS-058-635	Lime
SVLS-058-636	Navy Blue
SVLS-058-637	Orange
SVLS-058-638	Pink
SVLS-058-639	Purple
SVLS-058-640	Red



Matching wet dyed scarves available.

Quantity discounts available!

School Striped Ties

100% polyester School Striped ties.
58" standard length, 3-7/8" width.

Care: Dry clean

Order requirements: 12 min.

Packaging: Cellophane bag

Production time: Stock

List: \$10.83 (R)

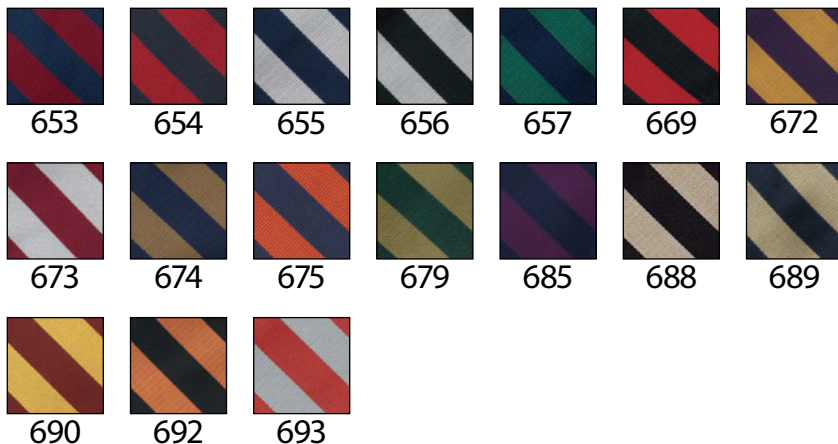
- BOGD-058-653 Navy Blue/Maroon
- BOGD-058-654 Navy Blue/Red
- BOGD-058-655 Navy Blue/Gray
- BOGD-058-656 Black/Gray
- BOGD-058-657 Navy Blue/Green
- BOGD-058-669 Black/Red
- BOGD-058-672 Purple/Gold
- BOGD-058-673 Maroon/Gray
- BOGD-058-674 Navy Blue/Tan
- BOGD-058-675 Navy Blue/Orange
- BOGD-058-676 Royal Blue/Orange
- BOGD-058-679 Kelly Green/Orange
- BOGD-058-685 Navy Blue/Purple
- BOGD-058-688 Black/Khaki
- BOGD-058-689 Navy Blue/Khaki
- BOGD-058-690 Maroon/Gold
- BOGD-058-692 Black/Orange
- BOGD-058-693 Red/Gray
- BOGD-058-697 Royal Blue/Gold



676



697



Mansfield Striped Ties

100% polyester Mansfield striped ties with stain resistance. 58" standard length, 3-7/8" width.

Care: Dry clean

Order requirements: 12 min.

Packaging: Cellophane bag

Production time: Stock

List: \$12.50 (R)

- MANF-058-002 Light Blue/Navy Blue
- MANF-058-003 Red/Maroon/Navy Blue
- MANF-058-008 Purple/Navy Blue
- MANF-058-011 Gold/Navy Blue



Use the QR Code reader app on your mobile device to visit the Wolfmark website page.

Quantity discounts available!

WOLFMARKTIES.COM
ASI 98085 | PPAI 114140 | SAGE 57515 | UPIC WOLFMARK



Novelty Ties

100% polyester novelty ties with stain resistance.

Care: Dry clean

Order requirements: 12 min.

Packaging: Cellophane bag

Production time: Stock



Use the QR Code reader app on your mobile device to visit the Wolfmark website page.

Matching scarves available.

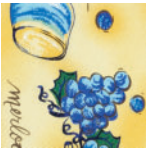
List: \$12.00 (R)



Wine Maker



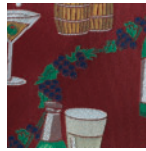
Vin De Bordeaux



Wine Country



Vintage Port Navy



Vintage Port Maroon



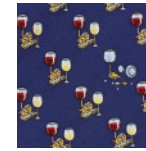
Martini Memphis



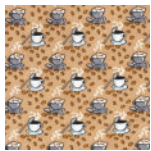
Cosmopolitan



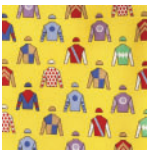
Corkscrew



Wine & Cheese



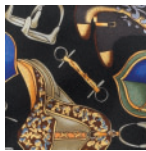
Daily Grind



Jockey Silks



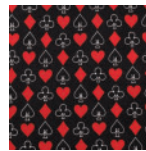
Saddle Up Red



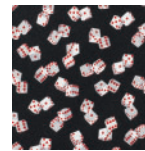
Saddle Up Black



Full House Maroon



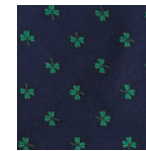
Full House Black



High Roller



Jackpot



Lucky Day



Pasta!



Italiano



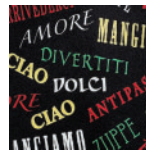
Ricette Italiane



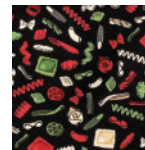
Italian Dishes



Salute



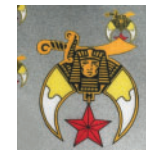
Amore



Pasta Toss



Masons



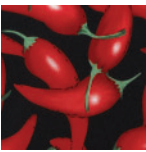
Shriners



Hot & Spicy



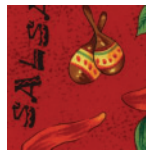
Pepper (small)



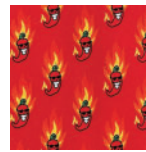
Pepper (large)



Multi Peppers



Salsa



Flaming Chili



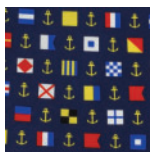
Lobster



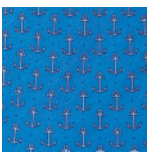
Flamingo



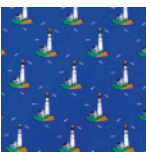
Fruit



Nautical Flags



Anchors



Harbor Lights



Starboard



Royal Regatta



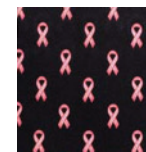
Utensils



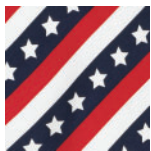
Flatware



Pink Ribbon Pink



Pink Ribbon Black



Stars & Stripes



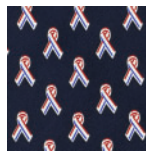
Wavy Flag



Liberty & Justice



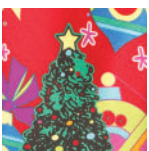
Go USA



Spirit of America



Snowman



Ornament Tree



Santa Lights



Santa Reindeer



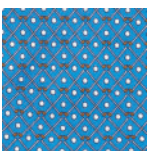
Santa Ornaments



The Flag



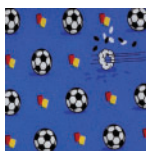
Sweet Swinger



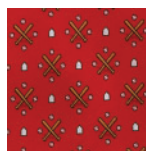
Cross Clubs



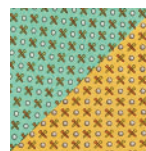
Fairway



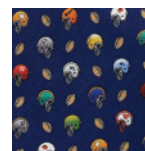
Soccer



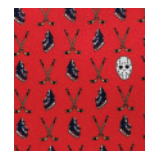
Baseball



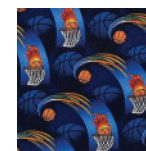
Tee-Up Green/Yellow



Football



Hockey



Basketball

Novelty Ties

BEVR-058-101	Wine Maker	MISC-058-127	Lobster
BEVR-058-102	Vin De Bordeaux	MISC-058-129	Flamingo
BEVR-058-103	Wine Country	MISC-058-169	Fruit
BEVR-058-104	Vintage Port Navy	NAUT-058-144	Nautical Flags
BEVR-058-105	Vintage Port Maroon	NAUT-058-187	Anchors
BEVR-058-108	Martini Memphis	NAUT-058-188	Harbor Lights
BEVR-058-136	Cosmopolitan	NAUT-058-189	Starboard
BEVR-058-151	Corkscrew	NAUT-058-190	Royal Regatta
BEVR-058-157	Wine Cheese	KITC-058-163	Utensils
BEVR-058-159	Daily Grind	KITC-058-186	Flatware
EQUE-058-134	Jockey Silks	PNKR-058-116	Pink/Pink Ribbon
EQUE-058-138	Saddle Up Red	PNKR-058-117	Black/Pink Ribbon
EQUE-058-145	Saddle Up Black	PATR-058-201	Stars & Stripes
GAMB-058-175	Full House Maroon	PATR-058-202	The Flag
GAMB-058-179	Full House Black	PATR-058-205	Wavy Flag
GAMB-058-180	High Roller	PATR-058-206	Liberty & Justice
GAMB-058-181	Jackpot	PATR-058-208	Go USA!
GAMB-058-425	Lucky Day	PATR-058-209	Spirit of America
ITAL-058-118	Pasta!	CHRS-058-120	Snowman
ITAL-058-119	Italiano	CHRS-058-121	Ornament Tree
ITAL-058-147	Ricette Italiane	CHRS-058-122	Santa Lights
ITAL-058-148	Italian Dishes	CHRS-058-123	Santa Reindeer
ITAL-058-152	Salute	CHRS-058-124	Santa Ornaments
ITAL-058-153	Amore	SPRT-058-115	Sweet Swinger
ITAL-058-171	Pasta Toss	SPRT-058-128	Cross Clubs
FRAT-058-166	Masons	SPRT-058-130	Fairway
FRAT-058-167	Shriners	SPRT-058-135	Soccer
HOTS-058-109	Hot & Spicy	SPRT-058-137	Baseball
HOTS-058-111	Peppers (small)	SPRT-058-140	Tee-Up Green
HOTS-058-112	Peppers (large)	SPRT-058-141	Tee-Up Yellow
HOTS-058-113	Multi Peppers	SPRT-058-146	Football
HOTS-058-114	Salsa	SPRT-058-150	Hockey
HOTS-058-149	Flaming Chili	SPRT-058-154	Basketball

Quantity discounts available!

Uniform Poplin Zipper Ties

100% polyester poplin adjustable uniform zipper ties. Available in 12", 14", 16", 18", 20", and 22" lengths.

Care: Dry clean

Order requirements: 12 min.

Packaging: Cellophane bag

Production time: Stock

List: \$6.08 (R)

UWPTZ-180-001	Black
UWPTZ-180-004	Maroon
UWPTZ-180-006	Hunter Green
UWPTZ-180-018	Dark Navy Blue



Uniform Poplin Ties

100% polyester poplin uniform ties with button hole perfect for police or security. 57" standard length. Clip on available in 16", 18", 20", and 22" lengths. Adjustable band available in 18", 20", and 22" lengths.

Care: Dry clean

Order requirements: 12 min.

Packaging: Cellophane bag

Production time: Stock



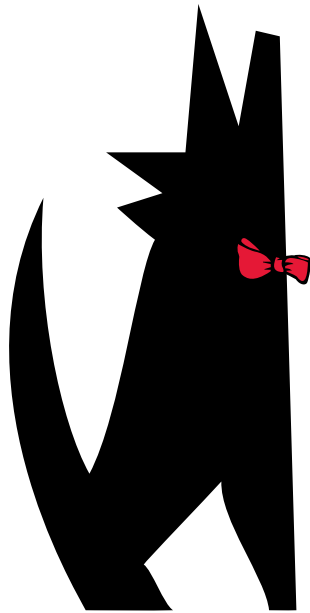
List: \$4.33 (R)

UWPT-180-001	Black
UWPT-180-003	Red
UWPT-180-004	Maroon
UWPT-180-006	Hunter Green
UWPT-180-017	Light Navy Blue
UWPT-180-018	Dark Navy Blue
UWPT-180-019	Brown
UWPT-180-029	Khaki

100% polyester poplin youth uniform ties with button hole. 44" standard length. Clip on available in 12" and 14" lengths. Adjustable band available in 12" and 14"

Youth List: \$4.33 (R)

UWPTY-180-001	Black
UWPTY-180-003	Red
UWPTY-180-004	Maroon
UWPTY-180-006	Hunter Green
UWPTY-180-017	Light Navy Blue
UWPTY-180-018	Dark Navy Blue
UWPTY-180-019	Brown
UWPTY-180-029	Khaki



WOLFMARK
Promotional Apparel

UNIFORM

2011



For the workforce everywhere.

Most items in stock and ready to ship.

Wolfmark has been a leader in quality, value
and customer service for over seventy years.

ASI 98085 | PPAI 114140 | SAGE 57515 | UPIC WOLFMARK

WOLFMARKTIES.COM



*Use the QR Code reader app
on your mobile device to visit
the Wolfmark website page.*

Poplin Vests

100% polyester fully lined poplin vest with full cloth back, front and inside pockets. 4" x 4" imprint area.

Sizes: Men's and women's S to 2XL

Care: Dry clean

Order requirements: 12 min.

Packaging: Cellophane bag

Production time: In stock

List: S-XL \$17.08 (R)
2XL \$19.17 (R)



Women's: UWPV-224-001



Men's: UWPV-223-001

Quantity discounts available!

Poplin Zipper Ties

100% polyester poplin adjustable zipper ties. Available in 12", 14", 16", 18", 20", and 22" lengths.

Care: Dry clean

Order requirements: 12 min.

Packaging: Cellophane bag

Production time: Stock

List: \$6.08 (R)

UWPZT-001 Black
UWPZT-004 Maroon
UWPZT-006 Hunter Green
UWPZT-018 Dark Navy Blue



Clip-on and velcro banded ties also available in stock.

Poplin Accessories

100% polyester poplin bow ties, crossovers and floppy bow ties.



List: \$3.50 (R) - \$7.92 (R)

Poplin Ties

100% polyester poplin uniform ties with button hole perfect for police or security. 57" standard length. Clip on available in 16", 18", 20", and 22" lengths. Adjustable band available in 18", 20", and 22" lengths.

Care: Dry clean

Order requirements: 12 min.

Packaging: Cellophane bag

Production time: Stock



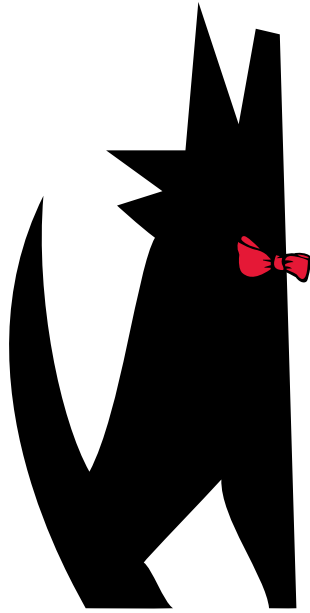
List: \$4.33 (R)

UWPT-001 Black
UWPT-003 Red
UWPT-004 Maroon
UWPT-006 Hunter Green
UWPT-017 Light Navy Blue
UWPT-018 Dark Navy Blue
UWPT-019 Brown
UWPT-029 Khaki

100% polyester poplin youth uniform ties with button hole. 44" standard length. Clip on available in 12" and 14" lengths. Adjustable band available in 12" and 14"

Youth List: \$4.33 (R)

UWPTY-001 Black
UWPTY-003 Red
UWPTY-004 Maroon
UWPTY-006 Hunter Green
UWPTY-017 Light Navy Blue
UWPTY-018 Dark Navy Blue
UWPTY-019 Brown
UWPTY-029 Khaki



WOLFMARK
Promotional Apparel

VESTS

2011



Stock or custom for all occasions.

Most items in stock and ready to ship.

Embroidery and screen-printing available.

Wolfmark has been a leader in quality, value
and customer service for over seventy years.

ASI 98085 | PPAI 114140 | SAGE 57515 | UPIC WOLFMARK

WOLFMARKTIES.COM



Use the QR Code reader app
on your mobile device to visit
the Wolfmark website page.

Custom Woven Vests

A traditional process that uses pre-dyed threads woven together to create the design as part of the fabric. The woven process is the correct way to produce stripes and tone on tone designs. Coordinate vests with neckwear and scarves for a complete look.

Fabric Content: 100% polyester or silk

Sizes: Men's and women's S to 3XL

Care: Dry clean

Order requirements: 150 min.

Production time: Approx. 7-8 weeks

Quoted per specifications.

Complimentary artwork up to 8 colors on silk and 6 colors on polyester, pre-production sample and set-up included with order. Additional colors charges apply.



Custom Wet Dyed Vests

Custom designed wet dyed vests start with white fabric and use permanent dyes to create both the background colors and logos. The wet dye process is best for colorful designs, PMS color matches and when producing matching ladies scarves. With the ability to produce up to 8 colors in a design, the wet dye process produces department store quality designs. Coordinate shirts with neckwear and scarves.

Fabric Content: Polyester or silk

Sizes: Men's and women's S to 3XL

Care: Dry clean

Order requirements: 150 min.

Production time: Approx. 7-8 weeks

Quoted per specifications.

Complimentary artwork up to 8 colors, pre-production sample and set-up included with order. Additional colors charges apply.



Uniform Poplin Vests

100% polyester fully lined poplin vest with full cloth back, front and inside pockets. 4" x 4" imprint area.

Sizes: Men's and women's S to 2XL

Care: Dry clean

Order requirements: 12 min.

Packaging: Cellophane bag

Production time: In stock

List: S-XL \$17.08 (R)/2XL \$19.17 (R)



Men's: UWPV-223-001



Women's: UWPV-224-001

Services

Embroidery or screen-print services for blank products are available.

Note: Embroidering or screen-printing does not include the cost of the item.

Embroidery

Stitch by stitch, adding embroidery is the perfect way to promote your identity or event.

Note: Due to the challenges embroidering presents, we do not recommend this service on ties or scarves.

Quantity	12-23	24-71	72-143	144-432	433-1199	1200-5000
5,000 stitches	\$10.97	\$5.25	\$4.50	\$4.17	\$3.43	\$2.97 (R)
6,000	\$12.00	\$5.67	\$4.83	\$4.50	\$3.73	\$3.20 (R)
7,000	\$13.05	\$6.08	\$5.17	\$4.80	\$4.00	\$3.40 (R)
8,000	\$14.08	\$6.50	\$5.50	\$5.10	\$4.27	\$3.60 (R)
9,000	\$15.13	\$6.92	\$5.83	\$5.40	\$4.53	\$3.80 (R)
10,000	\$16.17	\$7.33	\$6.17	\$5.70	\$4.80	\$4.00 (R)
11,000	\$17.08	\$7.75	\$6.50	\$6.00	\$5.07	\$4.20 (R)
12,000	\$18.00	\$8.17	\$6.83	\$6.30	\$5.33	\$4.40 (R)
Each additional 1000 stitches	\$0.92	\$0.42	\$0.33	\$0.30	\$0.27	\$0.20 (R)

Production time: Digitizing and emailed sewout is approximately 3 business days from approved art. Production is 5-7 business days from approved sewout. Add 5 business days for a production sample.

Color change charge: \$30.00 (R)

Digitizing charge: \$16.67 (R) per 1,000 stitches

Clear backing: \$2.08 (R) per location. Preferred for blankets but not recommended for large layouts.

Poly bag charge: \$0.50 (R)

Screen-printing

Recommended for Explorer, 4-in-1 and Jersey Fleece blankets only.

Quantity	One color
12-23	\$9.58 (R)
24-95	\$6.00 (R)
96-143	\$4.85 (R)
144-299	\$4.08 (R)
300-499	\$3.25 (R)
500+	\$2.63 (R)



Use the QR Code reader app on your mobile device to visit the Wolfmark website page.

Maximum print area: 14" x 14"

Production time: 10 to 12 business days from approved art.

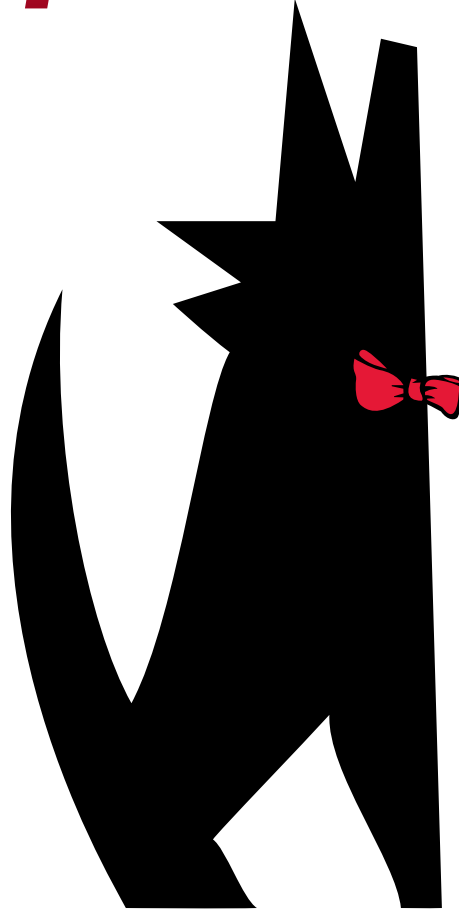
Screen set-up charge: \$75.00 (R) - includes ground shipping to screen-printer, artwork, necessary flash charges and under base.

Re-order set-up charge: \$25.00 (R)

Poly bag charge: \$0.50 (R)

Prices are subject to change at any time. All state and federal taxes apply.

Experience



the
WOLFMARK

Promotional Apparel

Difference!

ASI 98085 | PPAI 114140 | SAGE 57515 | UPIC WOLFMARK

WOLFMARKTIES.COM