

NEW PRODUCTS

Pages 2-3, 24-25, 34-35

ECONOMY LAPEL PINS

Best Budget Pricing

Pages 4-6

SPEED LAPEL PINS

Extra Fast Delivery

Page 7

PRESTIGE LAPEL PINS

Fine Jewelry Appearance

Pages 8-11

DIMENSION LAPEL PINS

Antique Finishes

Pages 12-13

RECOGNITION ENHANCEMENTS

Packaging & Presentation

Pages 14-16

MEDALS, CHALLENGE COINS

Coin Presentation & Display

Pages 17-21

KEY HOLDERS

BAG ACCESSORIES

Pages 22-25

WEARABLE EMBLEMS

Belt Buckles, Dogtags,

InspireRings, Lanyards

Pages 26-29

PATCHES & APPLIQUES

Embroidered, 3D & Printed

Pages 30-31

SPECTRAFLEX®

Non-toxic PVC, Poly Resin,

Injection Molded PVC

Pages 32-33

IN STOCK ITEMS

GENERAL INFO.

Back Cover



EXCITING NEW PRODUCTS FOR EVERY BUDGET!



Bag & Key Holders

Finders Key Purse



Air Fresheners



Screen Cleaners

Back Cover



Paper AIR FRESHENERS



Stock packaging front and back

Two-sided, full color imprint on high quality, scented card stock.

Custom shape up to 12 sq. inches.

Inexpensive gift or giveaway, easy to mail, universally used.

Perfect for trade shows and mass mailings for insurance

agencies, auto dealers, car detailers, carry-out restaurants.

Individually packaged in poly bags with full color insert.

Production time: three weeks. Rush service available.

Scents last at least 60 days. Choose from: vanilla, citrus,

lime, lemon, ocean breeze, lavender, pine, jasmine, berry,

cherry, peach, strawberry, apple, new car.

Item No.	Size	500	1,000	3,000	5,000	10,000	Setup
PAF	6" max. dimension length or width	2.60	1.44	1.10	0.98	0.80	100.00

Imprint charge on second side 100.00 setup charge

ABSOLUTE MINIMUM: 500 pieces.

Wipe-it NOW!

SCREEN • CLEANER

Always available for a quick wipe!

Safely and completely cleans the view screens of cell phones, mp3 and DVD players, GPS and other delicate electronics.

Lowest price in the industry! Inexpensive and always visible, the gift or give-away everyone will want and use!

Trade show and special event giveaways, communications company promos, schools, public service campaigns and small business advertising.

Adhesive microfiber material clings to surface, store on device back for quick access.

Reusable and washable, just rinse in water to restore self-adhesive properties.

Includes four color process or up to 3 spot color imprint on stock round, rectangular or square wipe.

Production time: 4 weeks.

Retail style packaging with full color card insert in individual poly bag.

Imprint areas: round -1", square -1", rectangle -1 1/4" x 1 1/4"

Wipe-it NOW screen cleaner					
Item #	600	1,000	2,500	5,000	10,000
WIN-RD	2.50	2.20	1.98	1.78	1.64
WIN-SQ	2.50	2.20	1.98	1.78	1.64
WIN-RC	2.50	2.20	1.98	1.78	1.64

Setup charge 40.00
ABSOLUTE MINIMUM: 600 pcs.



Microfiber cloth clings to surface, simply peel off, place sticky side on finger and wipe!



standard packaging





synthetic jewel



"Bobbie pin" - two-piece lapel pin connected by flexible spring QUR



glitter enamel QUR



LED option QUR

Our most popular process...
economical and high perceived value.
NO DIE CHARGE!

Choice of brass or lower cost iron base material,
gold, nickel, copper or black plated finish.

Four soft enamel colors included (matte or gloss finish), FREE PMS color match.

Epoxy dome included on iron base material.

Production time: 3-4 weeks

Butterfly or rubber clutch included.

Soft enamel lapel pins - brass base material

Item #	Size	150	300	500	1,000	2,500	5,000 up	
BSE75	3/4"	2.98	1.98	1.54	1.24	1.10		Call for best large quantity pricing
BSE875	7/8"	3.30	2.24	1.78	1.38	1.28		
BSE1	1"	3.50	2.30	1.88	1.54	1.38		
BSE125	1 1/4"	4.20	3.20	2.66	2.20	2.04		
BSE15	1 1/2"	5.10	3.98	3.20	2.84	2.50		

Soft enamel lapel pins - iron base material

Item #	Size	500	1,000	2,500	5,000	10,000	20,000 up	
ISE75	3/4"	1.38	0.98	0.78	0.68	0.62		Call for best large quantity pricing
ISE875	7/8"	1.46	0.96	0.78	0.70	0.64		
ISE1	1"	1.50	0.98	0.84	0.76	0.66		
ISE125	1 1/4"	1.78	1.20	1.04	0.94	0.88		
ISE15	1 1/2"	2.10	1.50	1.30	1.20	1.06		

See page 15 for lapel pin packaging and presentation options.

Add'l soft enamel colors	.10 ea.	Synthetic jewels	.98 ea.
Adhesive back	.20 ea.	Zipper pull	.08 ea.
Epoxy dome on brass	.06 ea.	Piercing: (each cutout or hole)	
Gold plating on iron	.12 ea.	tooling charge	40.00
Jeweler's clutch	.50 ea.	per piece	.10 ea.
Safety pin	.14 ea.	Engraved numerals:	
Second butterfly clutch	.14 ea.	per charge	20.00
Stick pin	.30 ea.	per piece	.40 ea.



copper plating



black plating



nickel plating



gold plating



Etched Soft Enamel Lapel Pins and Medallions

economy lapel pins

NO DIE CHARGE!

Thinner, lighter weight material - excellent choice for extra large lapel pins.

Choice of four metal finishes: gold, nickel, copper or black plated.

Four soft enamel colors included (matte or gloss finish), FREE PMS color match.

Production time: 3-4 weeks

Butterfly or rubber clutch included.

Etched lapel pins

Item #	Size	150	300	500	1,000	2,500	5,000 up
ESE75	3/4"	2.98	1.90	1.54	1.18	1.04	
ESE875	7/8"	3.30	2.10	1.68	1.30	1.14	Call for best large quantity pricing
ESE1	1"	3.40	2.20	1.74	1.44	1.24	
ESE125	1 1/4"	3.80	2.70	2.30	1.98	1.84	
ESE15	1 1/2"	4.40	3.50	2.88	2.34	2.10	

See page 15 for lapel pin packaging and presentation options.

Add'l soft enamel colors:	Jeweler's clutch	.50 ea.
	lapel pins	.10 ea.
	medallions	.24 ea.
Adhesive back:	Safety pin	.14 ea.
	lapel pins	.14 ea.
	medallions	.98 ea.
Epoxy dome:	Synthetic jewels	.98 ea.
	lapel pins	.20 ea.
	medallions	.04 ea.
Frosted finish:	Zipper pull	.08 ea.
	lapel pins	.06 ea.
	medallions	.06 ea.
	Piercing: (each cutout or hole)	
	tooling charge	40.00
	per piece	.10 ea.

Etched & Printed Medallions



full color printed medallion



etched medallion

Etched & printed medallions

Item #	Size	50	100	300	500	1,000	Die Svc. Charge	Epoxy Dome
EM2	2"	4.62	3.96	3.20	2.94	2.70	60.00	0.12
EM25	2 1/2"	5.48	4.96	3.96	3.64	3.40	80.00	0.20
EM3	3"	7.04	6.28	5.20	4.78	4.38	100.00	0.34



piercing in design



piercing in design





Additional silkscreen colors:

setup charge	50.00
per piece	.08 ea.
Adhesive back	.20 ea.
Jeweler's clutch	.50 ea.
Safety pin	.14 ea.
Second butterfly clutch	.14 ea.
Zipper pull	.08 ea.
Piercing: (each cutout or hole)	
tooling charge	40.00
per piece	.10 ea.
Metal edge	
setup charge	50.00
per piece	.08 ea.

custom dangle with
glitter enamel OQR



Printed design on a custom shape... photographic quality reproduction... NO DIE CHARGE!

Litho four color process lapel pins feature full color images and photographs with all gradations of color reproduced.

Silkscreen lapel pins includes four spot imprint colors with FREE PMS color match.

Both processes include custom shape and epoxy dome.

Production time: 3-4 weeks

Butterfly or rubber clutch included.

Litho & silkscreen lapel pins

Item #	Size	500	1,000	3,000	5,000	10,000	30,000 up	
4CP75	3/4"	1.94	1.20	0.88	0.74	0.64		Call for best large quantity pricing
4CP875	3/8"	1.98	1.24	0.98	0.84	0.74		
4CP1	1"	2.20	1.36	1.08	0.94	0.84		
4CP125	1 1/4"	2.50	1.70	1.40	1.20	1.10		
4CP15	1 1/2"	2.80	1.98	1.70	1.50	1.40		

See page 15 for lapel pin packaging and presentation options.



Printed Epoxy Dome Lapel Pins

speed lapel pins

Reproduce any full color image!

TWO SERVICE CHOICES:

USA Made with Union Label:

- Union label available.
- Choice of 140 stock shapes and sizes.
- 15 working day service standard.
- 10 working day service, add 15%.
- 5 working day service, call for pricing.

USA Made, No Union Label:

- Choice of 25 stock shapes and sizes.
- 8 working day service standard.
- 5 working day service, add 30%.
- 3 working day service, add 60%.

Epoxy dome and butterfly clutch included.

PMS color match not available on this product.

Custom shapes available - additional production time required, call for pricing and cutting die charge.

Please visit our website for stock size and shape outlines.

USA & Union made, 15 working day service

Item #	Size	100	300	500	1,000	2,500	5,000 up
PED1U	1"	4.60	3.68	2.98	2.40	2.14	Call for best prices
PED1375U	1 1/2"	4.98	3.98	3.40	2.80	2.48	Call for best prices

Stainless steel finding .30 ea. (Brass finding standard)

Setup charge 120.00

Union bug setup 150.00

USA made, no union label, 8 working day service

Item #	Size	100	300	500	1,000	2,500	5,000 up
PED	stock shapes	3.20	1.64	1.48	1.30	1.16	Call for best prices

Brass finding only

Setup charge 70.00

Note: Due to US government regulations, epoxy dome may develop a slight yellow cast over time.



S



Stainless steel finding (union label option only)





epoxy enamel colorfill with black plating



soft enamel colorfill



soft enamel colorfill



epoxy enamel with silver plating



sandblast & polished finish



black oxide finish



antique bronze finish



Custom die struck lapel pins 15 working day service UNION MADE IN THE USA

Includes a stock shape from 46 popular shapes and sizes (see website for stock shape and size options).

6 unique brass finishes (see choices below).

Brass finish standard; contact factory regarding gold, silver or copper finishes.

Custom shapes available, add 7 add'l working days, plus a cutting die service charge.

Made in USA, union bug available, contact factory for details.

Butterfly clutch included.

A. black oxide finish



D. sandblast and polished finish



B. antique bronze finish



E. soft enamel colorfill (incl. 3 colors)



C. stipple finish (silver)



F. epoxy enamel colorfill (incl. 3 colors)



Speed-USA lapel pins

Item #	Finish	250	500	750	1,000	2,500	5,000	
USA-SB	A. Stipple Background	1.98	1.72	1.62	1.38	1.14	Call for great large quantity pricing	
USA-ANT	B. Antique Bronze	2.84	2.60	2.40	2.20	1.86		
USA-BO	C. Black Oxide	2.84	2.60	2.40	2.20	1.86		
USA-SP	D. Sandblast & Polished	4.20	3.98	3.70	3.66	3.30		
USA-SE	E. Soft Enamel	Call factory for pricing						
USA-EE	F. Epoxy Enamel	Call factory for pricing						

Setup charge on 2D stock shapes

200.00

Setup charge for custom shapes

400.00

Setup charge for 3D designs

QUR



Die Struck Sandblast & Polished Lapel Pins

Fine jewelry appearance with an elegant two-tone finish.

NO DIE CHARGE!

Highly polished raised details contrast with matte finish background.

Choice of gold, nickel or copper finish.

Includes one soft enamel color. FREE PMS color match.

Production time: 3-4 weeks

Butterfly or rubber clutch included.

Sandblast & polished lapel pins

Item #	Size	150	300	500	1,000	2,500	5,000 up	
SP75	3/4"	3.60	1.98	1.70	1.50	1.30		Call for the best large quantity prices
SP875	7/8"	3.98	2.38	1.98	1.70	1.44		
SP1	1"	4.10	2.50	2.18	1.84	1.60		
SP125	1 1/4"	4.50	2.80	2.40	2.20	1.98		
SP15	1 1/2"	4.98	3.50	2.98	2.60	2.40		

See page 15 for lapel pin packaging and presentation options.

- Add'l soft enamel colors .10 ea.
- Resin enamel colors .20 ea.
- Adhesive back .20 ea.
- Dual gold-nickel plating .60 ea.
- Jeweler's clutch .50 ea.
- Safety pin .14 ea.
- Second butterfly clutch .14 ea.
- Synthetic jewels .98 ea.
- Piercing (each cutout or hole):
tooling charge 40.00
per piece .10 ea.
- Engraved numerals
per change 20.00
per piece .40 ea.



dual gold-nickel plating



copper finish



nickel finish



gold finish with soft enamel colorfill



Solid Gold Jewelry



Creating fine jewelry emblems in solid gold, gold fill and sterling silver is our special pride... please call factory for details



synthetic jewels and engraved numerals



gold finish with soft enamel colorfill



copper finish



dual gold-nickel plating



prestige lapel pins





black nickel plating



collector's series



Cloisonné appearance and quality
at a lower price!

NO DIE CHARGE!

Includes 4 highly polished resin enamel colors.
Enamel is level with metal surface.

FREE PMS color match.

Choice of gold, nickel, copper or black nickel plated finish.

Production time: 3-4 weeks

Butterfly or rubber clutch included.

Resin enamel lapel pins

Item#	Size	150	300	500	1,000	2,500	5,000 up
BRE75	3/4"	3.30	2.24	1.84	1.58	1.28	Call for low large quantity pricing
BRE875	7/8"	3.60	2.44	1.98	1.74	1.44	
BRE1	1"	3.98	2.66	2.30	1.98	1.66	
BRE125	1 1/4"	4.40	3.30	2.90	2.48	2.30	
BRE15	1 1/2"	4.98	3.98	3.58	3.10	2.80	

See page 15 for lapel pin packaging and presentation options.



Additional colors	.10 ea.
Adhesive back	.20 ea.
Jeweler's clutch	.50 ea.
Safety pin	.14 ea.
2nd butterfly clutch	.14 ea.
Synthetic jewels	.98 ea.
Zipper pull	.08 ea.
Piercing (each cutout or hole): tooling charge	40.00
per piece	.10 ea.
Engraved numerals: per charge	20.00
per piece	.40 ea.





Cloisonné Hard Enamel

Laser Enamel Label Pins

prestige lapel pins

P



perings



percing



copper finish



four color process imprint
CUR



custom dangle



synthetic jewel



synthetic jewel



percing



A tradition of highest emblem quality. NO DIE CHARGE!

Choice of over 100 cloisonné enamel colors, 4 colors included (no PMS color match available).

Includes choice of metal finishes: gold, nickel, copper or black nickel plated.

4-5 week production. Butterfly or rubber clutch included.

Cloisonné hard enamel lapel pins

Item #	Size	150	300	500	1,000	2,500	5,000 up
BHE75	3/4"	3.20	2.30	1.98	1.68	1.50	Call for the best large quantity pricing
BHEB75	7/8"	3.50	2.60	2.24	1.88	1.74	
BHE1	1"	3.78	2.90	2.48	2.10	1.94	
BHE125	1 1/4"	4.98	3.98	3.48	2.90	2.74	
BHE15	1 1/2"	5.98	4.98	4.50	3.80	3.58	

See page 15 for lapel pin packaging and presentation options.

Additional colors	.12 ea.
Jeweler's clutch	.50 ea.
Second butterfly clutch	.14 ea.
Synthetic jewels	.98 ea.
Piercing (each cutout or hole): tooling charge	40.00
per piece	.10 ea.

Color on color enamel without metal separators.

Highly polished cloisonné look and feel - enamel color is level with metal surface.

Includes 4 resin enamel colors & 1 laser color, printed on the enamel surface. FREE PMS color match

Choice of gold, nickel, copper or black nickel plated finish.

Production time: 4 weeks. Butterfly or rubber clutch included.

Laser enamel lapel pins

Item #	Size	150	300	500	1,000	2,500	5,000 up
LAS75	3/4"	3.40	2.30	1.98	1.66	1.40	Call for the best large quantity pricing
LASB75	7/8"	3.70	2.50	2.18	1.84	1.54	
LAS1	1"	3.84	2.66	2.24	1.98	1.64	
LAS125	1 1/4"	4.50	3.40	2.98	2.58	2.40	
LAS15	1 1/2"	5.10	4.10	3.78	3.20	2.98	

See page 15 for lapel pin packaging and presentation options.

Setup charge	40.00 per printed color
Add'l printed colors	.14 ea.

CommunityCare



nickel finish



gold finish



3-D design



3-D design



multiple cutouts



3-D design



Sculptural appearance, economical choice for larger quantity orders

No tooling charge for cutout or pierced areas of design. Pricing includes 5 cutout areas.

NO DIE CHARGE on 2-D designs!

Includes custom shape and up to four soft enamel colors. Optional resin enamel colorfill.

Choice of gold, nickel or copper finish, other finishes available.

3-4 week standard production - USA production with faster service available, call for pricing.

3-D designs or designs with many cutout areas, call for pricing and information.

Other sizes available, call for pricing.

Butterfly or rubber clutch included.

Cast lapel pins - 2 dimensional designs

Item #	Size	150	300	500	1,000	2,500	5,000 up
CST875	3/8"	3.70	2.50	1.60	1.24	1.04	Call for best large quantity pricing
CST1	1"	3.80	2.60	1.70	1.44	1.10	
CST125	1 1/4"	4.70	3.10	2.20	1.64	1.40	
CST15	1 1/2"	5.98	3.98	2.80	2.20	1.88	

See page 15 for lapel pin packaging and presentation options.

Add soft enamel colors	.10 ea.
Adhesive back	.20 ea.
Antique finish	.30 ea.
Jeweler's clutch	.50 ea.
Over 5 cutout areas	.06 ea.
Resin enamel colorfill	QUR
Safety pin	.14 ea.
Second butterfly clutch	.14 ea.
Synthetic jewels	.98 ea.
Zipper pull	.08 ea.



2-D design

3-dimensional
molding - QUR



Die Struck Antique Finish Lapel Pins

Emphasize dimensional design details in 2-D or 3-D high relief.

NO DIE CHARGE on 2-D designs.

Includes antique brass or antique copper finishes, antique silver or gold finishes available.

Includes one soft enamel color, FREE PMS color match.

Butterfly or rubber clutch included.

Production time after proof approval:

2-D designs - 3 weeks

3-D designs - 3-4 weeks

Die struck antique finish lapel pins

Item #	Size	150	300	500	1,000	2,500	5,000 up	Setup for 3-D High Relief
BANT75	3/4"	3.20	1.98	1.58	1.24	1.04		80.00
BANT875	3/8"	3.40	2.30	1.80	1.40	1.20	Call for the best large quantity pricing	90.00
BANT1	1"	3.50	2.40	1.98	1.54	1.34		90.00
BANT125	1 1/4"	4.20	2.98	2.48	2.10	1.78		110.00
BANT15	1 1/2"	5.10	3.70	2.98	2.68	2.30		130.00

See page 15 for lapel pin packaging and presentation options.

- Additional colors .10 ea.
- Adhesive back .20 ea.
- Ant. silver or gold finish .30 ea.
- Jeweler's clutch .50 ea.
- Safety pin .14 ea.
- Second butterfly clutch .14 ea.
- Synthetic jewels .99 ea.
- Zipper pull .08 ea.
- Piercing (each cutout or hole):
 - tooling charge 40.00
 - per piece .10 ea.
- Engraved & colorfilled numerals:
 - per change 20.00
 - per piece .40 ea.



area for engraved personalization



cham attachment



engraved & colorfilled numeral



3-D design



3-D high relief design



3-D high relief design
antique copper finish



3-D high relief design
antique silver finish



3-D high relief design
antique silver finish



2-D design
antique brass finish



2-D design
antique silver finish



2-D design
antique brass finish



2-D design
antique brass finish



2-D design
antique brass finish



2-D design with 5 soft enamel colors
antique silver finish



3-D high relief design
antique silver finish



2-D design
antique silver finish

D

dimension lapel pins

Recognition Enhancements

Options to denote levels of recognition

Pave jewels

custom dangles

stock dangles available with numbers 1-5, 10, 15, 20, 25, 30

synthetic jewels

synthetic jewel with engraved numeral

screened numeral

numeral as part of die

engraved numerals

engraved and colorfilled numerals, sandblast & polished and soft enamel colorfill

money clips

tie bar

cuff links

stick pin

charm

zipper pull

charm bracelets

butterfly clutch (standard)

button clutch

jeweler's clutch

rubber clutch optional at r/c

EmblemLOCK

Locking Clutch

Never lose a lapel pin again!

Unique locking collar securely fastens lapel pin to garment.

\$6.50/12 pack
wrench included

Bolo	1.80 ea.	
Button clutch	.50 ea.	
Cell phone/pencil topper	.30 ea.	
Charm bracelets - 7 1/2"		
#318, #319	1.80 ea.	
#320	2.40 ea.	
Cufflinks	1.50 pair	
Jeweler's clutch	.50 ea.	
Kilt pin	.80 ea.	
Money clip	1.50 ea.	
Safety pin back	.14 ea.	
Engraved & color filled numerals		
per change	20.00	
per piece	.40 ea.	
Stick pin	.30 ea.	
Stock numeral tabs (gold or silver)		
fits 3/4" or 7/8" lapel pins	1.50 ea.	
Synthetic jewels (red, green, blue, yellow, clear)	.98 ea.	
Tie bar	.50 ea.	
Zipper pull	.08 ea.	

Attachment pricing above does not include custom emblem.

Lapel Pin Presentation and Display

PIN POCKETS

Upgraded Lapel Pin Presentation Packaging



Exclusive from EMT...a unique packaging idea that adds importance to your lapel pin presentation.
 Ingenious matchbook style design created from premium card stock.
 All Pin Pockets arrive complete with your lapel pin (purchased separately) inserted and are only available with lapel pins produced by EMT.
 Choose from:

- Four, full color stock designs (Appreciation, Patriotism, Excellence or Congratulations) .15 ea.
- Embossed gold, silver or copper stock .15 ea.
- Optional label (2 color imprint, embossed stock only)
 - 500 pcs. .24 ea.
 - 1000 pcs. .16 ea.
 - 2500 pcs. + up .12 ea.
 - setup charge for label 80.00
- Custom Pin Pocket with your full color imprint OUR



Presentation Boxes



2-piece plastic box .50 ea.

Velour hinged box 2.50 ea.

Hinged plastic box .50 ea.

Custom Printed Cards



300	500	1,000	2,500
.50	.34	.20	.14

Includes one color imprint on card (up to 2" x 3.5"). Call for pricing on other sizes.
 Setup charge 40.00 color
 Additional colors .08 pc.

Lapel Pin Collector's Case



Organize, protect and travel with your valuable pin collection. Page dividers protect over 250 pins on 8 double-sided pages. Easy access pocket secures and hides pin backs. Textured vinyl cover, full zipper closure, carrying handle. In stock for immediate delivery. 11" x 17" fully opened.

Item #	1-10 pcs	11-25 pcs	26 pcs & up
PCC	19.50	17.00	14.70

Years of Service Lapel Pins



Custom engraving available.
Call for information.



Stock award level designations and corresponding finishes:

Numeral "1"	Black plated w/white enamel color-fill
Numeral "3"	Nickel plated w/black enamel color-fill
Numeral "5"	Gold plated w/black enamel color-fill
1 red jewel	Two-tone gold sandblast & polished finish
2 red jewels	Two-tone gold sandblast & polished finish
1 clear jewel	Two-tone gold sandblast & polished finish
2 clear jewels	Two-tone gold sandblast & polished finish
3 clear jewels	Two-tone gold sandblast & polished finish

Extra low minimum order.

Fast 10 working day production.

NO SETUP CHARGE! NO DIE CHARGE!

Complete programs from \$175.00!

Uniquely designed with a low 25 piece minimum order.

Ideal solution for a complete recognition program in smaller companies and organizations.

Includes custom full color round or rectangular imprint.

8 stock designs with changes in plating, enamel color and jewels to represent award levels of your choice.

A complete low cost program to recognize:

Years of service
Safety programs
Membership gifts
Year-end awards
Sales achievements
Volunteer participation



Years of service lapel pins

Item #	Style	25	50	75	100	250
YOS	enamel only	6.98	5.98	4.98	4.50	3.78
YOS-1	1 jewel	7.70	6.70	5.70	4.98	4.30
YOS-2	2 jewels	8.20	7.20	6.20	5.40	4.80
YOS-3	3 jewels	8.70	7.70	6.70	5.88	5.20

Pricing includes:

A full color reproduction of your logo on your choice of a round (7/16") or rectangular (3/16" x 5/16") imprint area.

Deluxe jeweler's clutch and individual presentation box.

Levels can be mixed to achieve quantity discount.

For example, to qualify for 25 piece pricing an order can include: 15 pieces with enamel only, 5 pieces with one jewel, 3 pieces with two jewels and 2 pieces with 3 jewels.

It's just this Easy...

10 SECOND TUTOR

Years of Service Lapel Pins

Reproduce your full color or spot color logo on round or rectangular insert placed on our stock shape lapel pin. Full color, high resolution photos, artwork or digital file accepted. Choose from eight stock award levels. Mix and match award levels to meet low 25 piece minimum order.



Die Struck Iron Economy Medals

Medals and medallions at the price you need with the quality you want.

Lower cost iron base material with the same die struck detailing as our brass medals.

Includes custom shape and loop and jump ring top for ribbon attachment.

Choice of metal finishes: bright gold, bright nickel, or black nickel.

Up to four soft enamel colors included. Free PMS color match.

Production time: 4 weeks, rush service available.



black nickel plating



Die struck iron economy medals

Item #	Size	150	300	500	1,000	2,500	5000 up	2-Die Sic. Chrg.
MI125	1 1/4"	3.20	2.40	1.80	1.40	1.30		70.00
MI1375	1 3/4"	3.44	2.38	1.98	1.56	1.44	Call for the best large quantity pricing	70.00
MI15	1 1/2"	3.98	3.40	2.88	2.40	1.90		80.00
MI175	1 3/4"	4.98	3.60	3.40	2.98	2.50		90.00
MI2	2"	5.50	4.50	3.98	3.50	2.98		100.00

For presentation and display options, see page 21.

For key tag options, see page 22-23.

For neck ribbon and ribbon drape pricing below.

Two-sided medal	QUR
Additional soft enamel colors	.10 ea.
Additional thickness	.30 per .2mm
Epoxy dome	.12 per side
Ribbon drape (RWB stripe)	.60 ea.
Neck Ribbon (7/8" RWB)	.60 ea.
Neck Ribbon (1 1/8" RWB)	.50 ea.

Other ribbon colors available, contact factory for details.



gold plating



nickel plating



M medals

Die Struck Brass Medals and Charms



antique silver finish

3-D design
antique brass finish2-D design
antique brass finish

3-D designs



Experience the highest standards of die making experience, skill and artistry!

Exceptional quality at excellent prices.

Custom shape with choice of finishes: bright gold, bright nickel, antique brass or antique copper.

Optional soft enamel or resin enamel colorfill. Free PMS color match.

Production time: 4 weeks

Sizes up to 4", thicknesses up to 1/4".

Commemoratives in solid gold, .999 silver and Sterling silver our specialty; please call for details.



ribbon drape

three piece medal
bright gold finish - QUR

side view

Die struck brass medals and charms

Item #	Size	150	300	500	1,000	2,500 up	2-D Die Set. Chg.	3-D Die Set. Chg.
MB125	1 1/4"	3.90	2.98	2.74	2.30	Call for the best large quantity pricing	75.00	150.00
MB15	1 1/2"	4.80	3.88	3.44	2.98		85.00	170.00
MB175	1 3/4"	6.20	4.98	4.70	4.20		95.00	190.00
MB2	2"	7.20	5.98	5.70	4.86		110.00	220.00

For presentation and display options, see page 21.

For key tag options, see page 22-23.

For neck ribbon and ribbon drape pricing, see below.

Two-sided medal	.add 20%
Additional thickness	QUR
Antique silver finish	.60 ea.
Antique gold finish	.60 ea.
Sandblast & polished finish	.50 ea.
Consecutive numbers	.20 ea.
Epoxy dome	.12 per side
Up to 4 soft enamel colors	.30 per side
Up to 4 resin enamel colors	.98 per side
Ribbon drape (RWB stripe)	.60 ea.
Neck Ribbon (3/8" RWB)	.60 ea.
Neck Ribbon (1 1/8" RWB)	.80 ea.
Other ribbon colors available, contact factory for details.	

Die Cast Medals and Charms

Economical choice for larger quantity orders with pierced areas in design.

No tooling charge for cutout areas of design.

Choice of metal finishes: bright gold, bright nickel, antique brass or antique copper.

Custom shape, loop and jump ring top included.

Production time: 4 weeks

Fully modeled product replicas available.

Maximum size for die casting is 5" x 10" x 1/8".

Please call for details on larger size emblems.



dual plating - QUR
design piercings: no extra charge



Die cast zinc medals and charms

Item #	Size	150	300	500	1,000	2,500 up	2-D Mold	3-D Mold
MZ125	1 1/4"	4.70	3.20	2.50	2.06		130.00	250.00
MZ15	1 1/2"	5.48	3.96	3.24	2.64	Call for the best large qty. pricing	140.00	260.00
MZ175	1 3/4"	7.04	5.60	4.38	3.74		160.00	330.00
MZ2	2"	8.48	6.48	5.26	4.38		180.00	390.00

For presentation and display options, see page 21.

For key tag options, see page 22-23.

For neck ribbon and ribbon drape pricing, see page 18.

Two-sided medal	..add 20%
Additional thickness	QUR
Antique silver finish	.60 ea.
Antique gold finish	.60 ea.
Frosted finish	.50 ea.
Consecutive numbers	.20 ea.
Epoxy dome	.12 per side
Up to 4 soft enamel colors	.30 per side
Up to 4 resin enamel colors	.98 per side



two-piece sculpted charm



full 360 degree rotation center emblem



3-dimensional design
antique brass finish



3-dimensional design
bright gold finish



antique
copper finish



antique
silver finish



3 dimensional design
antique brass finish

M
medals



antique brass finish
piercings in design



bright nickel finish



litho center w/epoxy dome - QUR
diamond cut edge (die struck only)



antique copper finish



3-dimensional design
antique silver finish



piercings in design
diamond cut edge (die struck only)



bright gold finish



sandblast & polished finish
(die struck only)



bright gold finish
with epoxy dome

Traditional symbol - Lifetime keepsake

One or two sided coin with custom shape
in either die-struck brass or die-cast zinc.

Choice of finishes: bright gold or nickel, antique brass

Production time: 4 weeks.

Die cast zinc challenge coins

Item #	Size	100	300	500	1,000	2,500	2.0 die service charge per side	3.0 die service charge per side
CCZ15	1 1/2" x 3mm	3.86	3.48	3.28	3.18		140.00	260.00
CCZ175	1 3/4" x 3mm	4.74	4.38	4.16	4.14		160.00	300.00
CCZ2	2" x 3.5mm	6.40	5.90	5.60	5.48		180.00	340.00

Die struck brass challenge coins

Item #	Size	100	300	500	1,000	2,500	2.0 die service charge per side	3.0 die service charge per side
CCB15	1 1/2" x 3mm	4.80	4.18	3.88	3.78		100.00	190.00
CCB175	1 3/4" x 3mm	5.98	5.84	5.40	5.18		120.00	220.00
CCB2	2" x 3.5mm	7.98	7.80	7.70	7.50		140.00	260.00

For presentation and display options, see page 21.

For key tag options, see page 22-23.

Additional thickness

Antique gold or silver finish

Antique copper finish

Frosted finish (die cast coins)

Sandblast & polished finish (die struck coins)

Consecutive numbers w/o color

Consecutive numbers with color

Diamond cut edge (die struck coins only)

Epoxy dome

Up to 4 soft enamel colors

Up to 4 resin enamel colors

Printed colors on resin enamel:

setup charge

per color per piece

QUR

.80 ea.

.40 ea.

.40 ea.

.60 ea.

.16 ea.

.20 ea.

.80 per side

.12 per side

.30 per side

.98 per side

40.00

.20 ea.



dogtag shape with piercing



removable
coin



coin adhered
permanently

New! Leather Coin Accessories

Memo book or keyfob in black leather with recessed area for insertion
of custom coin. Holds round coins 1-1/2", 1-3/4" and 2" size.

Item #	Style	10	25	50	100	250
LMB	Memo book	17.00	15.98	15.20	14.50	13.98
LKT	Keyfob	4.98	4.50	4.20	3.98	3.78

Coin Presentation and Display

Acrylic coin embeddings... the perfect desktop two-sided display!



Embedment prices include:

One double sided coin sized at 1 3/4" x 3mm.
Choice of bright gold, nickel or copper coin finish.
Up to 4 soft enamel colors on each side of coin

Item #	Acrylic Size	50	100	300	500	2-Die 3-Sides
E237SS	2 9/16" square x 3/4"	22.80	22.40	19.98	18.34	325.00
E237SR	2 9/16" round x 3/4"	24.20	23.70	21.40	19.48	325.00
E25X4	2 1/2" x 4" x 3/4"	26.40	25.88	23.40	21.30	325.00
E3X5	3" x 5" x 3/4"	27.30	26.80	23.98	21.98	325.00

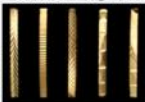
Antique brass coin finish	.30 ea.
Antique gold or silver coin finish	.70 ea.
Additional soft enamel colors	.20 ea.
Consecutive numbers	.40 ea.
Silk screen imprint on exterior of acrylic setup charge	80.00
per piece	.20 ea.

Medal and Coin Enhancements

- A. Decorative coin edge - QUR
B. Edge engraving - approx. 20 characters, Helvetica type setup charge 100.00 per piece .80 ea.
C. Coin capsule, includes box and die cut insert
CCS - 1 1/2" round .70 ea.
CCL - 1 9/16" to 2" round .80 ea.
D. Coin easel (clear, two piece acrylic)
ACS 1.10 ea.
E. Die cast coin stand - antique brass or antique silver
BCSS - 1 3/4" to 1 1/2" coin 2.50 ea.
BCSL - 1 3/4" to 2" coin 2.50 ea.
F. Velour drawstring pouch (choice of colors, sizes):
Custom imprint available.
V33 - 3" x 3" .80 ea.
V45 - 4" x 4" .99 ea.

A. Decorative coin edge options

Coin and medal thickness gauge



E. Die cast brass desktop coin stand



Hinged velvet presentation box QUR



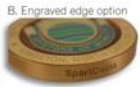
D. Clear acrylic two-piece coin easel



E. Velour drawstring presentation pouches



C. Two-piece clear acrylic coin capsules



B. Engraved edge option

Custom Bottle Openers
Practical and fun to use.
Call for information.



Coin Keytag Frame

Easily convert your coin to a key tag!
Silver or gold finish.
Fits 3mm thick round coins.
25 piece minimum.

KF15 - 1 1/2"	2.20 ea.
KF175 - 1 3/4"	2.50 ea.
KF2 - 2"	2.80 ea.



Crystal Key Tags

3-D Laser Engraving
Optional Switched LED

Elegant &
Eye-catching

Deluxe gift
box standard

Choose a 3-D imprint suspended inside the crystal, surface etching with color fill, or both.

Optional red, blue or green LED illuminates the dimensional quality of the design and provides light at dark entryways.

Light module with on/off switch and replaceable batteries.

Deluxe gift box included.

Upscale nickel plated key ring (#813) standard.

Fast 15 working day production.

Vector art required for imprint suspended inside the crystal.

Crystal key tags with lasered imprint

Item #	Style	100	300	500	1,500	2,500	Setup Charge
KTC	without LED	4.70	4.24	3.78	3.68	Call for low price	80.00
KTC-L	with switched LED	6.30	5.50	4.98	4.88	Call for low price	80.00

Custom key holders...
attractive, durable, practical.

An important part of any emblem presentation.

Die struck and die cast keytags include a custom shape with a 2-D or 3-D one-sided imprint.

No extra charge for key ring attachment #902 or #903 (shown below). Other key ring options available.

Choice of metal finishes: bright gold, bright nickel, antique brass, other finishes available.

Production time: 3-4 weeks. Rush service available.

Die struck brass key tags

Item #	Size	150	300	500	1,000	3,000	2-D die service chg. per side	3-D die service chg. per side
KTB1	1"	3.36	2.26	2.04	1.74		65.00	130.00
KTB125	1 1/4"	4.06	3.14	2.90	2.46		75.00	150.00
KTB15	1 1/2"	4.96	4.04	3.60	3.14		85.00	170.00
KTB175	1 3/4"	6.36	5.14	4.86	4.36		95.00	190.00
KTB2	2"	7.36	6.14	5.86	4.98		110.00	220.00

Two-sided keytag add 20%

Additional thickness QUR

Antique gold finish .60 ea.

Antique silver finish .60 ea.

Antique copper finish .40 ea.

Sandblast & polished finish .50 ea.

Consecutive numbers .16 ea.

Epoxy dome .12 per side

Up to 4 soft enamel colors .30 per side

Up to 4 resin enamel colors .98 per side

Die cast zinc key tags

Item #	Size	150	300	500	1,000	3,000	2-D die service chg. per side	3-D die service chg. per side
KTZ1	1"	3.98	2.42	1.88	1.60		120.00	240.00
KTZ125	1 1/4"	4.86	3.36	2.66	2.22		130.00	250.00
KTZ15	1 1/2"	5.64	4.12	3.40	2.80		140.00	260.00
KTZ175	1 3/4"	7.20	5.76	4.54	3.90		160.00	330.00
KTZ2	2"	8.64	6.64	5.40	4.54		180.00	390.00

Attachment options:

#902, #903 n/c

#909, #912, #920, #923 .30 ea.

#813 .70 ea.

Leather key fob 1.80 ea. + 40.00 setup



Key Holders



polished nickel finish
with bead attachment
QUR



leather keyfob attachment
with die cast emblem



wire cord
attachment
QUR



die cast nickel finish



3-D design
antique brass finish

key holders
K



Colorful, flexible and durable non-toxic PVC.
See pages 32-33 for pricing and product info.



litho emblem
with full color
imprint and epoxy dome : QUR



Bag Accessories



Deluxe presentation box at no extra charge.

Folding Bag Hanger with upgraded magnetized clasp and NEW hidden hook!
 Unique and practical...the perfect gift or giveaway item. Bags are suspended clear of the floor in restaurants, offices or restrooms, keeping them clean and safe. Folds completely for compact storage when not in use. Includes a 1-1/4" custom emblem with full color digital imprint & epoxy dome. Bright silver finish. Deluxe gift box packaging included. Production time: 2 weeks. Rush service available.



Hook self-stores in recessed track, unfolds and pivots for hanging.



Securely suspends bag from any level surface.

Fast Two Week Production On All Bag Hangers!



Standard Bag Hanger with full color emblem. Rests securely on tabletop, bag hangs from sturdy hook. Includes 1 1/4" custom emblem with full color digital imprint and epoxy dome. Silver finish. Deluxe gift box packaging included at no extra charge. Production time: 2 weeks. Rush service available.



Item#	Style	100	200	300	500	1000	Setup
PUR-HF	Folding Bag Hanger	5.98	5.50	4.98	4.70	4.50	50.00
PUR-HWS	Standard Bag Hanger	4.50	3.98	3.50	3.28	3.16	50.00

Bag Accessories

Finders Key Purse®

Your keys stay at the TOP of your bag!
NO digging - ALWAYS accessible

(pronounced "finders keepers")



soft enamel
colorfill



gold finish



antique silver
finish emblem



silver finish



No tooling charge
for piercings
in design



Attractive and useful... hooks
over the edge of most bags
for fast and easy key access.

bag accessories
B

Revolutionary, patented new key tag.
QVC on-air best seller with stock emblem.

Now available with custom emblem only at EMT!

Keeps keys secure and accessible on any bag,

briefcase, duffle, utility bag or shopping tote.

Die cast custom emblem included.

Choice of gold or silver finish.

Production time: 3-4 weeks. Rush service available.

Item#	200	300	500	1000	Setup
PUR-H0	6.70	5.30	4.60	4.40	50.00

STOP THE DIG!

NEW! Cell Phone Keeper

Your cell phone starts ringing...you start frantically digging!

This fun phone carrier stops the dig...only at EMT!

Stretchy sack clips on to the Finders Key Purse® - your keys and phone are always handy and together in any bag.

Choice of stock red "telly" imprint or solid black sack.

Custom full color imprints available, 1000 piece min. QUR.

\$1.40 each
50 pc. min.



Loop easily
attaches to
FKP clasp



Exclusively at EMT!

Die Struck & Die Cast Belt Buckles



antique silver finish



antique brass finish

die cast buckle
bright nickel finishantique brass finish
soft enamel colorfill

Custom belt buckles...practical and prized wearable recognition.

Reproduce intricate logos and designs in 2-D or 3-D high relief in any size or shape!

Choice of metal finishes: bright gold, bright nickel, antique brass, antique copper. Other finishes available.

Optional soft or resin enamel colorfill. Free PMS color match.

Production time: 4 weeks.

Item #	Size	100	300	500	1,000	2,500 up	2-D Die Sec. Chg.	3-D Die Sec. Chg.
Die struck brass belt buckles								
BB25	2 1/2" round x 3 mm	12.98	10.98	9.98	9.48	Call for the best large qty. prices.	155.00	
BB175	1 1/4" x 2 1/4" x 3 mm	11.60	9.60	8.68	8.20		180.00	OUR
BB2375	2 1/4" x 3" x 3 mm	16.50	12.80	11.60	11.18		210.00	
Die cast zinc belt buckles								
BZ25	2 1/2" round x 3 mm	11.10	8.88	7.98	7.48	Call for the best large qty. prices.	240.00	
BZ175	1 1/4" x 2 1/4" x 3 mm	10.98	7.98	7.20	6.64		280.00	OUR
BZ2375	2 1/4" x 3" x 3 mm	13.50	10.50	9.38	8.78		300.00	

Antique silver finish .90 ea.

Antique gold finish .90 ea.

Frosted finish .70 ea.

Consecutive numbers .20 ea.

Curved buckle die service charge OUR

Personalizations (names, titles) .50 ea.

Up to 4 soft enamel colors .30 ea. piece

Up to 4 resin enamel colors .98 ea. piece



Dog Tags

"ICED OUT" Dog Tags with jewels... elegant, distinctive and fun to wear.

Die cast custom dogtag, nickel plated with 2 soft enamel colors. Includes 44 synthetic jewels in border.

Includes 24" bead chain. 2" x 1-1/8" size.

Jewel colors: clear, blue, green, red, yellow.

Other colors available, contact factory for details.

Production time: 4 weeks

"Iced Out" dog tags

Item #	100	300	500	1,000	2,500	Setup 1 side imprint
DT-10	9.98	7.78	7.20	6.10	Call for pricing	180.00

Additional enamel colors

.10 ea.

Additional jewels in center design

.10 ea.

Designs with no jewels and two sided designs, contact factory.

Etched Dog Tags, durable & inexpensive.

Includes soft enamel etched imprint on one side of natural aluminum finish, 24" bead chain. 2" x 1-1/8" size.

Or choose a silver imprint on colored metal.

Metal colors: gold, black, red, green, royal, navy, pink, purple, yellow, other colors available.

Production time: 3 weeks

Etched dog tags

Item #	Material	250	500	1,000	3,000	5,000	Setup 1 side imprint
DT-EA	aluminum	1.96	1.60	1.38	1.28	Call for best pricing	120.00
DT-ES	stainless steel	2.40	1.98	1.78	1.68	Call for best pricing	120.00

Second side imprint

Setup charge

40.00

per piece

.14 ea.

Add 1 colors (natural aluminum finish only)

per side

.06 per color

Epoxy dome

.12 per side

Litho Full Color Dog Tags

Includes a four color process imprint on one side and 24" bead chain. 2" x 1-1/8" size.

Epoxy dome included. Production time: 3-4 weeks

Litho full color dog tags

Item #	Material	250	500	1,000	3,000	5,000	Setup 1 side imprint
DT-LA	aluminum	2.10	1.80	1.68	1.44	Call for best pricing	120.00
DT-LS	stainless steel	2.60	1.88	1.76	1.58	Call for best pricing	120.00

Second side imprint

setup charge

100.00

per piece

.14 ea.

Dogtag Options:

Ball chain, 30"	.08 ea.
Ball chain, 34"	.12 ea.
Epoxy dome	.10 per side
Silencers	.14 ea.
Split ring	n/c
Zipper pull	n/c
Ball chain, 4.5"	n/c



Spectraflex® non-toxic PVC molded or printed dogtags. See page 32 for information.



etched on stainless steel

etched on gold aluminum

etched on aluminum

litho full color imprints

litho imprint with optional silencer

dog tags
D

InspireRings



InspireRings™ custom pendants... timeless style with an inspiring message.

Fashionable recognition on a budget for schools, teams, churches, non-profits, corporations and special events.

Die cast, nickel plated with custom imprint in one color soft enamel colorfill. Free PMS color match.

Pendant hangs from a sleek 17" black nylon cord with silver lobster claw clasp.

In stock for fast delivery: American flag pendants. See back cover for image and pricing.

Production time: 4 weeks. Rush service available.

Standard packaging: full color stock printed card in poly bag. Custom cards available, QUR.

Custom InspireRings™ Pendants (nickel finish)

Item #	300	500	1000	2500	Die Service Charge
INS	2.60	2.40	1.98	1.78	85.00

Silver finish

.10 ea.

Gold finish

.10 ea.

Add'l soft enamel colors

.10 ea.

Custom card: see page 15 for pricing



standard packaging



custom packaging



different plating colors

InspireRings™ bracelets - fashion and fun.

Popular cuff style with two custom imprint choices.

Choose die cast zinc with unique, custom shape and nickel finish. Custom text and full logo reproduction in one soft enamel color. Gold or antique silver finish available.

InspireRings™ Bracelets - die cast zinc

Item #	Style	100	300	500	1000	Die Service Charge
INSBZ	Nickel finish	11.50	7.20	5.98	5.20	200.00

Gold finish

.50 ea.

Antique silver finish

1.50 ea.

Etched brass or steel, a good choice for a flexible fit.

Bright nickel finish. Custom text in one soft enamel colorfill. Choose from 3/4" wide brass or 7/8" wide steel. Max. imprint in letters & spaces: brass - 20, steel - 16.

InspireRings™ Bracelets - etched imprint (nickel finish)

Item #	Style	300	500	1000	2500	Die Service Charge
INSBSN	Steel Cuff	4.98	4.30	3.70	3.30	110.00
INSB8N	Brass Cuff	6.30	5.50	4.60	4.40	110.00

Gold finish

.30 ea.

Personalization

.98 ea.

Bracelets



NEW! Die cast zinc cuff bracelet with custom shape #INSBZ



Etched brass or steel cuff bracelets

Lanyards

NO SETUP OR SCREEN CHARGES!

Choice of four imprint and material combinations:

- Full color heat transfer
- Woven imprint
- Spot color silkscreening on polyester or tubular fabric.

Bamboo fabric, an ecological, renewable fiber, quoted on request.

Pricing includes any attachment shown in box below. ATT05 standard if no attachment specified. Other attachment options available.

Production time: 3 weeks



Silkscreen Imprint on Polyester Lanyard



Silkscreen Imprint on Tube Lanyard



Heat Transfer Full Color Imprint



Woven Imprint on Polyester



Item No.	Width	300	500	1,000	3,000	5,000	10,000
Polyester Lanyard with one color woven imprint							
LAN-W625	¾"	NA	1.94	1.30	1.10	0.98	0.90
LAN-W75	¾"	NA	2.10	1.68	1.30	1.10	0.98
LAN-W1	1"	NA	2.20	1.74	1.46	1.30	1.14
Lanyard with full color heat transfer imprint							
LAN-HT625	¾"	3.14	2.52	1.70	1.46	1.26	Call
LAN-HT75	¾"	3.28	2.66	1.78	1.60	1.40	for
LAN-HT1	1"	3.44	2.90	1.98	1.74	1.54	pricing

Item No.	Width	100	300	500	1,000	3,000	5,000
Polyester lanyard with one color silkscreen imprint							
LAN-SS625	¾"	2.90	1.90	1.46	1.18	1.00	0.90
LAN-SS75	¾"	3.00	1.98	1.54	1.26	1.10	0.98
LAN-SS1	1"	3.20	2.40	1.66	1.38	1.20	1.10
Tube-style lanyard with one color silkscreen imprint							
LAN-T375	¾"	2.80	1.82	1.46	1.18	1.00	0.90
LAN-T625	¾"	2.94	1.90	1.58	1.28	1.10	0.98

Additional screened colors: .10 ea. + 50.00 setup

Lanyards



Buckle Clip \$0.22 ea.



Breakaway Release Buckle \$0.20 ea.

Patch Headquarters



lasered edge
metallic thread

NO SETUP CHARGES

on any embroidered patch or applique!

Production time: 2 weeks. Rush service available.

Up to 7 thread colors and merrowed border included.

Over 70 twill background colors available.

Intricate shapes, laser cut or sizes over 5 in., call factory.

50% thread coverage

Item #	Size	50	100	200	300	500	1,000
P2-50	2"	3.98	1.70	1.36	1.10	0.84	0.74
P25-50	2½"	4.70	1.98	1.58	1.34	1.10	0.86
P3-50	3"	4.98	2.40	1.94	1.60	1.34	1.12
P35-50	3½"	5.50	2.88	2.38	1.98	1.56	1.22
P4-50	4"	5.98	3.50	2.88	2.40	1.80	1.40
P45-50	4½"	6.98	3.98	3.30	2.66	2.10	1.80
P5-50	5"	7.50	4.50	3.80	3.10	2.50	2.10

70% thread coverage

Item #	Size	50	100	200	300	500	1,000
P2-70	2"	4.20	1.98	1.60	1.24	0.98	0.84
P25-70	2½"	4.98	2.30	1.90	1.50	1.24	1.06
P3-70	3"	5.40	2.70	2.28	1.98	1.58	1.28
P35-70	3½"	5.98	3.20	2.74	2.30	1.88	1.58
P4-70	4"	6.50	3.98	3.30	2.68	2.30	1.88
P45-70	4½"	7.40	4.60	3.98	3.20	2.58	2.30
P5-70	5"	8.50	5.98	4.50	3.70	3.18	2.78

100% thread coverage

Item #	Size	50	100	200	300	500	1,000
P2-100	2"	4.30	2.10	1.74	1.38	1.10	0.88
P25-100	2½"	4.98	2.70	2.24	1.78	1.38	1.24
P3-100	3"	5.98	3.30	2.78	2.24	1.74	1.60
P35-100	3½"	6.48	3.98	3.38	2.68	2.18	1.90
P4-100	4"	7.48	4.74	4.30	3.20	2.78	2.44
P45-100	4½"	7.98	5.50	4.98	3.74	3.20	2.90
P5-100	5"	9.98	6.70	5.78	4.70	4.20	3.50

Embroidered Bag Tags 70% coverage, 2-side imprint, custom shape

Item #	Size	100	200	300	400	500
EBT	3½"	5.98	4.28	3.68	2.98	2.76

Patch size equals length plus width divided by 2
(i.e. a 2" x 4" patch is figured: 2+4=6÷2=3" size)

Metallic thread	add 20-30%
Felt material background	add 10%
Fluorescent color	add 5% ea.
Add'l thread colors over 7	.10 ea.
Heat seal or PVC backing (heat seal required on laser cut patches)	.06 per inch
Button loop	.20 ea.



button loop



Extra-large patches QUR

Embroidered, Printed and Specialty Patches and Appliques

Sublimated Four Color Process Patches

NO SETUP CHARGES! Full color image on a custom shape.
Merrowed border included on standard shapes.
Production time: 2 weeks. Rush service available.

Item #	Size	100	300	500	1,000	2,500	5,000 up
PSUB4	4 sq. in.	2.60	2.10	1.48	1.16	0.88	
PSUB6	6 sq. in.	2.98	2.30	1.58	1.24	0.98	Call factory for the best large quantity prices!
PSUB8	8 sq. in.	3.10	2.54	1.78	1.36	1.08	
PSUB9	9 sq. in.	3.20	2.60	1.88	1.46	1.14	
PSUB10	10 sq. in.	3.30	2.70	1.98	1.54	1.16	
PSUB11	11 sq. in.	3.40	2.80	2.06	1.60	1.22	
PSUB12	12 sq. in.	3.50	2.90	2.10	1.66	1.26	
PSUB14	14 sq. in.	3.60	2.98	2.18	1.72	1.38	
PSUB16	16 sq. in.	3.80	3.10	2.28	1.86	1.44	

Sublimated patch size equals length times width.
 (i.e. a 2" x 4" patch is figured: 2 x 4 = 8" size)



3D High Relief Embroidered Patches

NO SETUP CHARGES!

Dimensional embroidered sculpture of your design.
70% thread coverage and merrowed border included.

Production time: 2 weeks. Rush service available.
 Submit artwork to determine suitability for 3-D design.

Item #	Size	100	200	300	500	1,000	2,000 up
P3D3	3 sq. in.	2.98	2.50	2.18	1.64	1.30	Call for the best large qty. pricing.
P3D3S	3 1/2 sq. in.	3.60	2.98	2.50	1.98	1.64	
P3D4	4 sq. in.	4.30	3.70	3.30	2.50	1.98	
P3D4S	4 1/2 sq. in.	4.98	4.20	3.60	2.98	2.52	
P3D5	5 sq. in.	5.98	4.98	4.20	3.40	2.70	



Embroidered Appliques

NO SETUP CHARGES

Adhesive or heat seal backing, 100% thread coverage.

Production time: 2 weeks. Rush service available.

Item #	Size	300	500	1,000	2,500	5,000
APP1	1"	0.98	0.70	0.56	0.50	0.44
APP15	1 1/2"	1.20	0.76	0.68	0.60	0.56



Patches

SPECTRA FLEX®

Sewable non-toxic PVC patches or labels.

Thin, flexible material - amazing small detail reproduction in bright, durable colors.

Up to 6 PVC colors included. Free PMS color match.
 Reverse standard color: Black. Other colors available.

Production time: samples 2-3 weeks.
 full order 3 weeks after sample approval.

Item #	Size	250	500	1,000	3,000	5,000	30 Die Service Chg.
SFXL4	4 sq. in.	1.70	1.40	1.24	1.18	1.14	110.00
SFXL6	6 sq. in.	1.98	1.76	1.50	1.44	1.38	110.00

Additional colors .12 ea.
 Back side imprint: .05 ea.
 setup charge 40.00





KEY COVER with LED

- First in the Industry!
- Bright LED lights your way.
- Priced right for youth groups, incentive and safety programs and event giveaways.



key cover with LED



key covers without LED



key tag



auto air freshener



Flexible, Colorful, Durable!

Amazing small detail reproduction.

Molded, dimensional imprints in touchable, non-toxic PVC. Durable and creative products for every home, school, auto & office; personal and childrens' accessories, desktop items. Up to 6 non-toxic PVC colors included. Free PMS color match. Production time: Samples 2-3 wks. Full order 3 wks. after approval.

Reverse side standard color: Black. Other colors available.

Item #	Details	250	500	1,000	3,000	5,000 up	1-Die Service Chg.
Lapel Pins & Zipper Pulls (2-D Design)							
SFXLP1	1"	1.10	0.98	0.88	0.78	0.72	140.00
SFXLP15	1½"	1.20	1.10	0.98	0.88	0.78	140.00
Keytags or Magnets (2-D Design)							
SFXK15	1½"	1.40	1.10	0.98	0.92	0.88	140.00
SFXK175	1¾"	1.50	1.30	1.20	1.14	1.10	190.00
SFXK2	2"	1.80	1.56	1.40	1.36	1.30	190.00
SFXK25	2½"	2.20	1.98	1.76	1.64	1.60	190.00
SFXK3	3"	2.90	2.20	1.98	1.88	1.84	190.00
Luggage tags (2" W" x 4")							
SFXLTP	w/paper insert	3.30	2.80	2.48	2.30	2.18	270.00
SFXLTW	w/write-on back	2.98	2.60	2.30	2.10	1.98	270.00
Bracelet							
SFXB	¾" x 7½"	2.88	2.30	1.98	1.88	1.80	200.00
Coaster							
SFXC35	3½" round x 2.5mm	2.20	1.80	1.66	1.48	1.42	220.00
SFXC4	4" x 4mm	2.60	2.30	2.10	1.88	1.76	280.00
Photo frame							
SFXPF	3" x 4" photo	4.40	3.40	2.98	2.74	2.66	240.00
Dogtags (1¼" x 2") includes 24" bead chain							
SFXDTM	2D molded	1.98	1.68	1.38	1.28	1.18	110.00
SFXDTS	silk screened	1.98	1.68	1.38	1.28	1.18	60.00
Key covers (1¼" to 1½") includes same imprint on both sides.							
SFXKCM	2D mold no LED	2.60	2.30	2.10	1.88	1.76	200.00
SFXKCS	silkscreen no LED	2.20	1.80	1.66	1.48	1.42	160.00
SFXKCL	2D mold w/LED	3.30	2.98	2.48	2.20	1.98	140.00
Auto air freshener (scents: lemon, evergreen, ocean fresh or vanilla)							
SFXAF2	2"	2.98	2.50	2.24	2.14	2.06	140.00
SFXAF25	2½"	3.30	2.90	2.60	2.50	2.40	160.00
SFXAF3	3"	4.20	3.40	2.98	2.88	2.78	200.00
SFXAF35	3½"	4.60	3.80	3.36	3.26	3.18	200.00
Bottle Opener							
SFXBO	1½" x 4½"	5.98	4.98	4.20	3.88	3.70	200.00

See page 31 for sevable Spectraflex® non-toxic PVC patches.

Additional colors	.12 ea.
Back side silkscreened imprint	
setup charge	40.00
per piece	.05 ea.
3-D Designs	
2X die service charge plus 15% per piece	
Keycover with LED:	
red, green or yellow LED	N/C
blue or white LED	.30 ea.

You GOTTA FEEL These!



dogtag with molded imprint



dogtag with screened imprint



zipper pull



coasters



side view of 3-dimensional molded design

magnets



luggage tags



photo frame on key chain

bottle opener



bracelet

magnets keytags dogtags zipper pulls patches bagtags
desktop accessories key covers lapel pins coasters photo frames

NEW for 2010



Poly Resin and Injection Molded PVC

Fully dimensional 3-D modeling.

Excellent small detail reproduction.

Durable and lightweight.

Hand painted details

Custom shapes and sizes from 1 inch to 3 feet!

Uses limited only by your imagination!**3-D Sculptures****Product replicas****Awards and trophies****Plaque mounted medallions****Souvenirs and gifts****Special event commemoratives****Lapel pins****Key chains**

Due to the complex nature of these manufacturing processes, Poly Resin and Injection Molded PVC items must be quoted from design and specifications. Please submit sketches, photos or sample of item to be duplicated with size, color and quantity specifications for immediate quotation.

NEW for 2010

FRIENDSHIP BANNERS

new 2010



The versatility of custom banners makes them the easy and economical choice for any message!

Friendship Banners...award quality image at a budget-conscious price.

Eye-catching signage with custom full color graphics
 Portable and affordable; transport and attractively display your message in many places.

Easy to hang, convenient to store, dozens of uses:
 team awards, school events, goal recognition, sales awards, meeting rooms, membership signage.

Choose full color imprint on supple polyester fabric banner or silk-screened spot color imprint on satin banner with semi-rigid liner.

All banners include decorative fringe and dowel rod with tasseled cord. Choose rectangle or triangle shape.

Production time: Full color imprint - 2 weeks.

Item No.	Size	50	100	250	500	1000	Setup
Polyester banner with four color process imprint							
FBFC-68	6" x 8"	6.50	6.28	5.60	5.44	4.88	40.00
FBFC-79	7" x 9"	7.70	7.40	6.70	6.40	5.78	40.00
FBFC-810	8" x 10"	9.98	8.98	8.20	7.90	6.98	40.00
FBFC-912	9" x 12"	11.70	10.98	9.98	9.60	8.60	40.00

Item No.	Size	50	100	250	500	1000	Setup
Satin banner with one spot color, silk-screened imprint							
FBSS-57	4 1/4" x 7"	7.40	5.20	3.38	2.88	2.48	40.00
FBSS-69	6 1/4" x 9 1/2"	7.98	5.60	4.50	3.70	3.18	40.00
FBSS-711	7 1/2" x 11 1/2"	8.30	5.98	5.10	4.30	3.70	40.00
FBSS-1012	10 1/4" x 12 1/2"	8.98	6.98	5.78	4.98	4.40	40.00

Additional silk screened colors:
 per color .14
 setup charge 50.00 per additional color

Custom sizes available, QUR.



In Stock for Fast Delivery Awareness Ribbon and U.S. Flag Emblems

Awareness Ribbon Lapel Pins - Elegant cast 3D design with polished gold metal finish. Soft enamel colorfill in all popular awareness colors. Pink, purple, black, royal blue, yellow and red in stock for immediate delivery.

U.S. Flag Lapel Pins - Choose die-struck or etched (with epoxy dome). Gold metal finish and three soft enamel colors.

U.S. Flag Embroidered Patches - Gold or white merrowed border (3/8" x 2 1/2"). Applique (1 1/2" x 2") with adhesive back.

InspireRing™ U.S. Flag Pendant - Bright nickel finish on waving, die cast flag design. Includes 18" black nylon neck cord with silver finish lobster claw clasp.

U.S. Flag Mini-Emblem - Flexible ring fits snugly on pencil, pen, cell phone antenna.

Item #	Item	100	250	500	1000
AR3	Awareness Ribbon Lapel Pin	1.98	1.84	1.70	1.60
TOP	Flag Mini-Emblem	1.88	1.38	1.10	0.88
INS-R	InspireRings™ Flag Pendant	1.98	1.80	1.36	1.20
DSF5	Die Struck Flag Lapel Pin	0.98	0.92	0.88	0.78
ETC3	Etched Flag Lapel Pin	0.98	0.86	0.82	0.74
CL	Custom Logo Lapel Pin	2.98	2.18	1.94	1.66
EMB11	U.S. Flag Applique	0.85	0.70	0.65	0.59
EMB10	U.S. Flag Patch	1.70	1.40	1.30	1.18



Custom logo U.S. Flag Lapel Pins.
Diestruck w/full color custom imprint.
Round(3/8") or rectangle(1/2" x 3/8") imprint.
Fast 10 working day production.
Imprinted in the USA!
NO DIE or SETUP CHARGE.

General Information

ACKNOWLEDGEMENTS: All orders must be received in writing. The factory acknowledges all orders in writing. Please review as this information defines production specifications. Refer to EMT acknowledgment number when contacting factory about order.

ARTWORK: All processes (except Litho, Printed Epoxy Dome and Crystal Keytags) require clean black & white artwork. We prefer art to be 3-4 times the size of the emblem desired. Art modifications and design work are done at an hourly rate of \$100.00. Litho and Printed Epoxy Dome require full color, photo ready art as we reproduce exactly what is submitted. Crystal Keytags require B&W vector art. If not available, the experienced emblem artists at EMT can create the art.

CATALOGS & RANDOM SAMPLES: Up to 10 available at no charge. Additional catalogs available at \$2.50 each. If expedited shipping is required, distributor third party shipping account must be provided.

COPY CHANGES: Most copy changes require a new die or set-up charge. Minimum quantities apply as shown for each process.

CORRECTIONS OR CANCELLATIONS: An order in process is subject to costs incurred to date.

DIES & TOOLING: Dies, tooling, models, films and mold remain the property of EMT. Dies are available for reorder for two years.

EXACT QUANTITY ORDERS: EMT makes every effort to ship the exact quantity ordered. However, we reserve the right to over or under ship by up to 5% and invoice accordingly.

F.O.B.: Factories in Indiana, California or Massachusetts. EMT will exercise its best judgment in selecting carrier if none is specified.

LESS THAN MINIMUM: \$150.00. Absolute minimum is 1/2 of minimum catalog quantity, except where noted otherwise.

PRODUCT MEASUREMENTS: To determine correct size category for pricing, measure the longest dimension of desired emblem, with exception of embroidered patches (see page 30).

PROOF-PRODUCT: All die and setup charges plus \$100.00. On orders of 500 pieces or more, \$100 sample fee is rebated upon confirmation of quantity order. Spec or pre-production samples of embroidered patches also require a \$150.00 setup fee, rebatable on the basis stated above. Changes made after product proof production may incur additional charges.

PROOF-DIGITAL: E-mail proofs are available to expedite order processing time. EMT guarantees product reproduction to be accurate. EMT does not warrant computer screen color matches as accurate.

PRODUCTION TIME: See individual products.

RETURNS: Inspect all shipments for accuracy immediately upon delivery. All claims must be made within 10 working days from order shipment. Returns will not be accepted without authorization and a R/A# from EMT.

RUSH ORDERS: Accepted only upon factory approval. Nominal additional charges may apply.

SECOND SIDE IMPRINT: See individual products.

SPECIAL PACKAGING: Available for all products. See pages 15 and 21. Call factory for quote on custom packaging.

SPLIT DESTINATION SHIPMENTS: For shipment to more than 1 location or at different times, add \$8.00 per location or release.

TRADEMARKS: The logos, names and trademarks that appear in EMT catalogs are not intended for sale and do imply endorsements by the organizations represented. They are examples of emblems previously manufactured and are not offered for sale, except with the express written consent of the firm owning the trademark. EMT assumes no liability for determining the holder to legal title to any trademark or copyright. Any and all such determinations are the responsibility of the distributor.

Prices in catalog are effective at time of publication. Current product pricing is available on our web site and these prices will prevail.



UPIC: EMTEASY

SAGE: 50054

asi/52263

(p)